



*2013 Universal Snowmobile Lift Assembly Instructions pg.1.*



**Items Required for assembly**

Sockets and Combination Wrenches  
Drill and 1/4" Drill Bit  
Light Duty Grease  
Small Hammer

## *2013 Universal Snowmobile Lift Assembly Instructions pg.2.*

1. Locate (1) main frame assembly and (2) roller wheel assemblies

Main Frame Assembly



Roller Wheel Assembly



2. Using the 1/4" drill bit drill out the bolt holes in both the brackets and the roller wheel assembly to clean out any powder coating that may interfere with the bolt.  
Install a washer on both sides of frame and nuts on the outside.  
To avoid collapsing the frame do not over tighten.

### **Supplied hardware required**

8-1 3/4" x 1/4 x 20 Bolts

8-1/4" x 20 Nyloc Nuts

16-1/4" Flat Washers

## *2013 Universal Snowmobile Lift Assembly Instructions pg.3.*

3. Locate the (2) Scissor supports.

### **Hardware required:**

2-1/4" x 1 3/4" x 20 Bolts

2-1/4" x 20 Nyloc Nuts

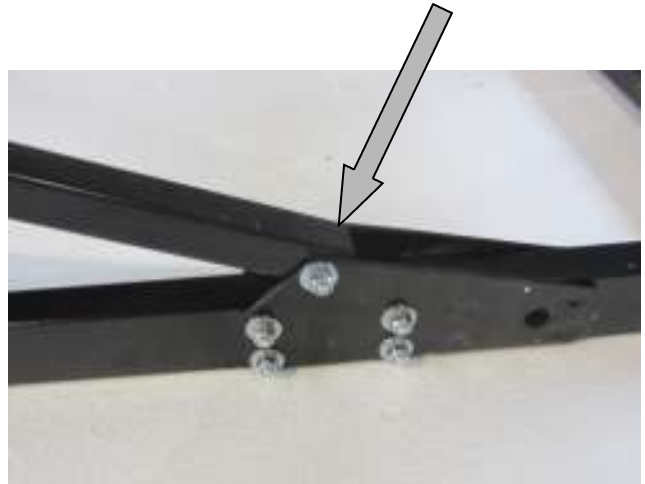
4-1/4" Flat Washers

4. Apply a small amount of light duty grease around the holes on the scissor supports. Install as shown in the image to at the bottom. Flat washers on both sides and nylocs on the outside. Do not over tighten, scissor supports must pivot freely.

Scissor Supports



Apply small amount of light duty grease.



## *2013 Universal Snowmobile Lift Assembly Instructions pg.4.*

4. Locate the (1) front sub frame assembly.

### **Hardware required:**

2-1/4" x 1 3/4" x 20 Bolts

2-1/4" x 20 Nyloc Nuts

4-1/4" Flat Washers

4. Apply a small amount of light duty grease around the holes on front sub frame assembly. Install as shown in the image to at the bottom. Flat washers on both sides and nylocs on the outside. Do not over tighten, sub frame must pivot freely.

Front sub frame assembly



Apply small amount of light duty grease.



## *2013 Universal Snowmobile Lift Assembly Instructions pg.5.*

5. Locate the (1) Upper sub frame assembly.

### **Hardware required:**

4-1/4" x 1 3/4" x 20 Bolts

4-1/4" x 20 Nyloc Nuts

8-1/4" Flat Washers

4. Apply a small amount of light duty grease around the holes on front sub frame assembly. Install as shown in the image to at the bottom. Flat washers on both sides and nylocs on the outside. Do not over tighten, upper sub frame must pivot freely.

Front sub frame assembly

Apply small amount of light duty grease  
in all four locations.





## *2013 Universal Snowmobile Lift Assembly Instructions pg.6.*

6. Locate the (1) jack and (2) adjustable isolators (2) 4" Diameter wheels

### **Hardware required:**

2-1/2" x 13 x 5" Bolts

1-1/2" x 13 x 6 1/2"

1-1/2" x 13 x 3 1/2"

6-1/2" Flat Washers

4-1/2" Nyloc Nuts

Install jack using the (1) 1/2" x 6 1/2" bolt and the (1) 1/2" x 3 1/2" bolt and two Nylocs. Do not over tighten.

Install the (2) 4" diameter wheels using the (2) 1/2" x 5" bolts, (2) 1/2" Nylocs and (6) 1/2" flat washers. A flat washer on the inside, outside and in between the wheel and the frame. Nyloc on the outside. Tighten securely.

Screw in (2) isolators at rear of lift

Jack



Wheels and isolators



4" Wheel



Isolators

# *2013 Universal Snowmobile Lift Assembly Instructions pg.7.*

## Operating Instructions

Capacity 650 LBS.

1. With the WRP Universal lift in its lowest position and the rear isolators adjusted all the way down roll it under the machine from the front as shown in image #1. Center the lift side to side and make sure the main support bar is in a stable position under the bulkhead. Raise the rear isolators up all of the way or until they slightly rest under the running boards as shown in image #2.
2. Using the hand crank or the drill attachment raise the lift up until the main support bar slightly touches the bulkhead. Recheck for proper positioning. Raise until the desired height is reached.
3. How high you raise the machine or where the machine is positioned will determine the ease of mobility. Test different positions that best fits your sled.

### WARNINGS:

Do not use lift for spinning track.

Do not climb or sit on machine when on lift.

Do not over extend or raise lift too high or beyond verticle

When working under machine insure that sled is stable.

Image #1



Image #2

