



Mountain TUFF Running Boards

POLARIS WIDE-BOARD-MODELS 2007-2010 RMK\DRAGON

INSTALLATION INSTRUCTIONS & RECOMMENDATIONS

Tools Required

Drill Motor
3/16" Rivets & 1/4" Rivets (Included)
Clamps and/or vice grips
Small disc sander or grinder

Safety glasses

#F & #11 Drill Bits
Metal cutting saw or Plasma cutter
Marking Pen
Rivet gun (pneumatic if possible)

Safety glasses are a must, always wear eye protection!

Caution!!!

Improper installation may result in permanent damage to snowmobile tunnel, this product to be installed only by a qualified technician.

1. Open package and inspect contents for damage or missing parts. Should damage be found, or parts missing, contact Wasatch Recreational Products (WRP) to arrange for replacements.
2. Gather and lay out tools making them ready for use.
3. Prepare templates per instructions printed on the templates (included).
4. Alignment of the templates should be done from the seam in the OEM running boards. **See image #1**
5. Using the properly aligned templates, mark the locations for the cuts to be made. Inspect area marked to be cut to insure no reinforcement brackets are in the cutting path. **(Do NOT cut any support brackets or reinforcements.)** Re-mark and carefully cut around them. **See Image #2**



Image #1



Image #2

*Wasatch Recreational Products * 165 N. 1330 W., Suite C5, Orem, Utah 84057
Phone: 801.802.0617 * Fax: 801.802.6703 * www.wr-products.com*

Mountain TUFF Running Boards

POLARIS DRAGON WIDE-BOARD

6. Drill out and remove the two (2) or three (3) rivets at the rear of the cutting area (both sides). **See image #3**



Image #3

7. Drill out the outer rail rivets in all ten (10) locations. Five (5) each side. **See image #4**



Image #4

8. Cut or nip the top layer of aluminum while being careful to not disturb the lower layer. **See image #5**

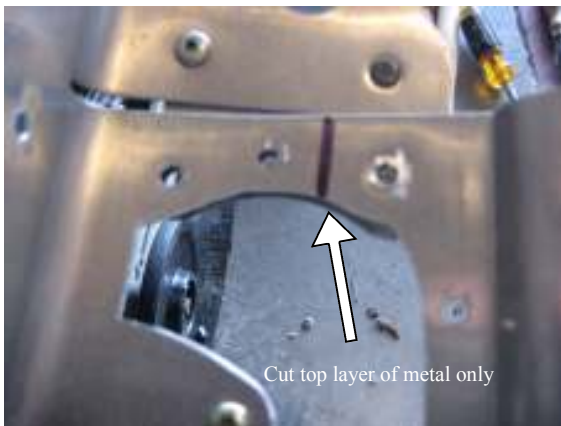


Image #5

9. Remove the OEM tube rails using a 1/2" wrenches. Two (2) locations in the foot pocket, and two (2) locations on the rear of the tunnel per side. Using OEM hardware replace with the WRP wide-board tube rails (included). **See image #6**



Image #6

10. Drill and rivet tread outers to new tube rails ten (10) locations, five (5) each side] using the 1/4" rivets and drill (included) while insuring that the base remains parallel and horizontal

Mountain TUFF Running Boards

POLARIS DRAGON WIDE-BOARD

11. Dry fit new wide-boards and position for “best fit” while making sure the rear kick up aligns with the top surface of the new tube rails. See **image #7**



Image #7

15. Once all supplied locations have been riveted, Drill up through factory rivet holes up from bottom and drill through new RB in four (4) locations. See **image #8**



Image #8

17. Optional - As an extra measure of strength, using a hammer and block, smash the back side of rivet backs flat.

12. Once set in place, clamp securely in each location to receive rivets where practical. **The snugger the fit the better and longer lasting the connection will be.**
13. Once clamped, re-check your cut outs for proper fit. Remove any remaining metal that can be seen through the cutout windows before attaching the running boards.
14. Rivet running boards to tunnel sides and base in supplied locations making sure the running boards are secure against both tunnel side and base faces.
16. Rivet 4 new hole locations with 3/16” rivets. See **image #9 and #10**



Image #9



Image #10