

## **Strong Hydrophobic Interaction: Phenyl 1500 and Phenyl 3000**

### **Hydrocell Phenyl 1500**

#### **Protein Mixture**

**Column:** 50 x 4.6 mm

**Mobile Phase:**

A: 2.5 M Ammonium Sulfate in Eluent B

B: 0.1 M Potassium Phosphate, pH 7.0

**Gradient:**

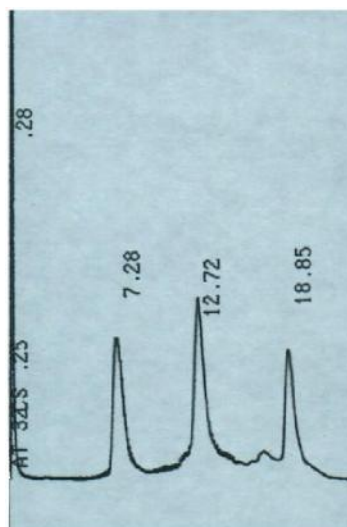
Linear 0-100% B in 20 minutes

**Detection:** UV 280 nm

**Flow Rate:** 1.0 mL/min.

**Peak Identification:**

1. Ribonuclease A
2. Lysozyme
3. Chymotrysinogen A



### **Hydrocell Phenyl 3000**

#### **Protein Mixture**

**Column:** 150 x 4.6 mm

**Mobile Phase:**

A: 2.5 M Ammonium Sulfate in Eluent B

B: 0.1 M Potassium Phosphate, pH 7.0

**Gradient:**

Linear 0-100% B in 20 minutes

**Detection:** UV 280 nm

**Flow Rate:** 1.0 mL/min.

**Peak Identification:**

1. Ribonuclease A
2. Lysozyme
3. Chymotrysinogen A

