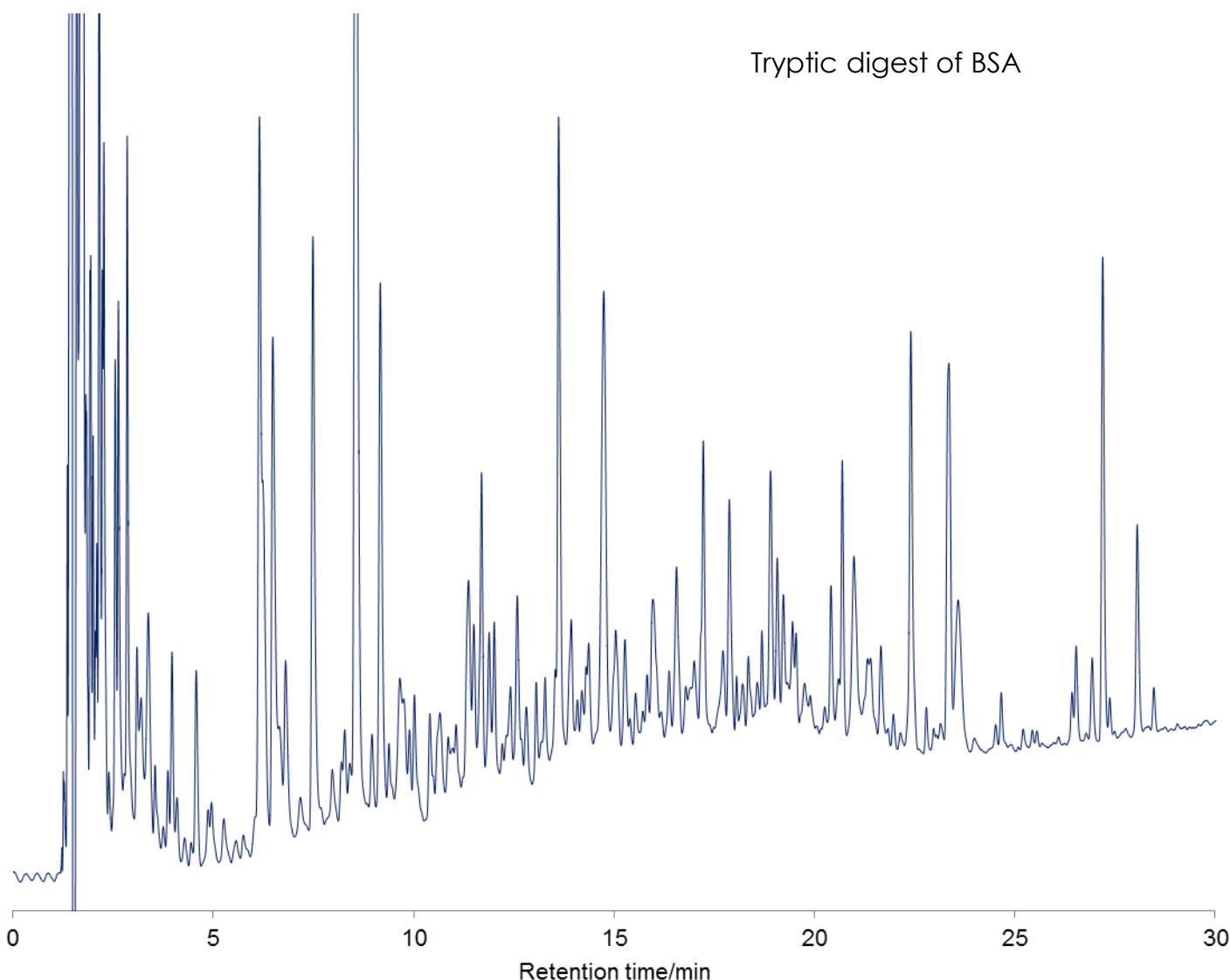


## ペプチド(BSA)の分離

## Peptides (BSA)

SunShell C18-WP 2.6  $\mu$ m, 150 x 4.6 mm i.d.

Tryptic digest of BSA



Column: SunShell C18 –WP 2.6  $\mu$ m, 150 x 4.6 mm

Mobile phase:

A) 0.1% TFA in H<sub>2</sub>O/CH<sub>3</sub>CN=(90:10)

B) 0.1% TFA in CH<sub>3</sub>CN

Gradient program

Time	0 min	5 min	50 min
%B	5%	5%	50%

Flow rate: 1.0 mL/min,

Temperature: 25 °C

Detection: UV@215 nm

Sample: Tryptic digest of BSA