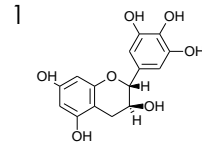
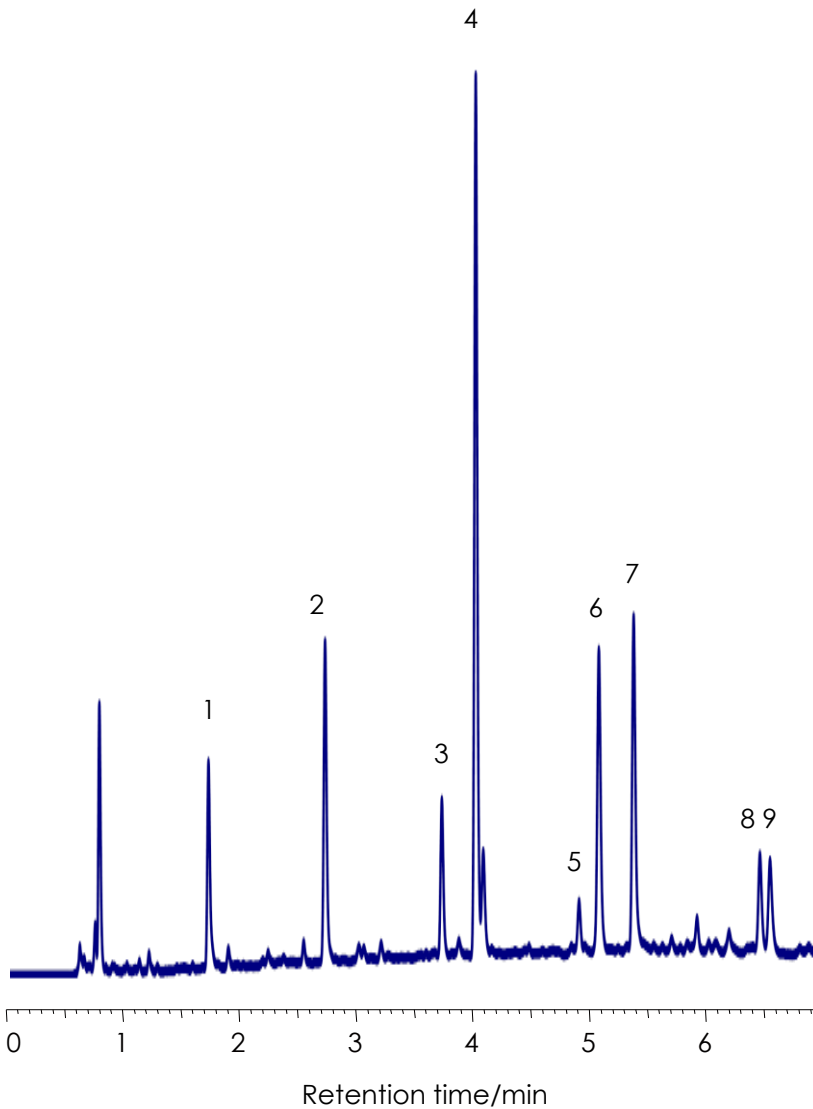


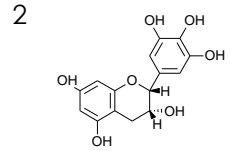
## ウーロン茶の分離

### Oolong tea

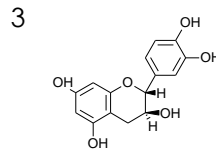
SunShell C18 2.6 μm, 75 x 4.6 mm i.d.



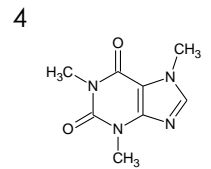
Gallocatechin



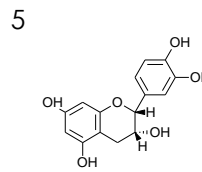
Epigallocatechin



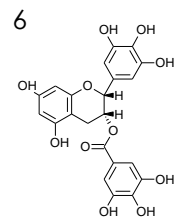
Catechin



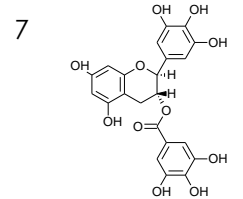
Caffeine



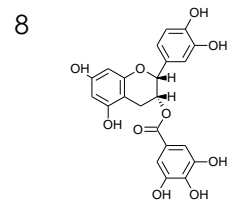
Epicatechin



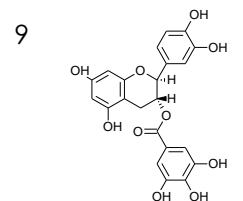
Epigallocatechin gallate I



Gallocatechin gallate



Epicatechin gallate



Catechin gallate

Column: SunShell C18 2.6 μm, 75 x 4.6 mm  
 Mobile phase:  
 A) 0.1% Phosphoric acid  
 B) CH<sub>3</sub>CN  
 Gradient program

Time	0 min	7.5 min	10 min
%B	2%	25%	25%

Flow rate: 1.0 mL/min,  
 Temperature: 25 °C  
 Detection: UV@250 nm  
 Sample: Oolong tea