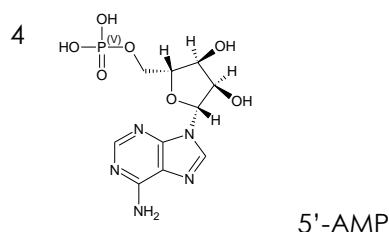
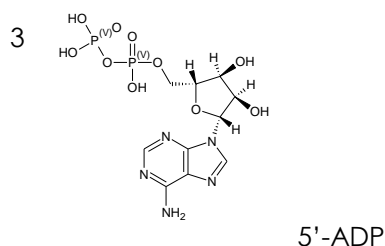
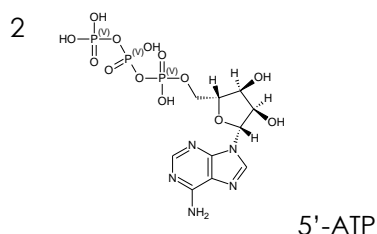
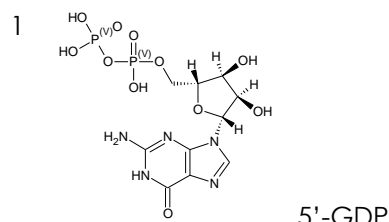
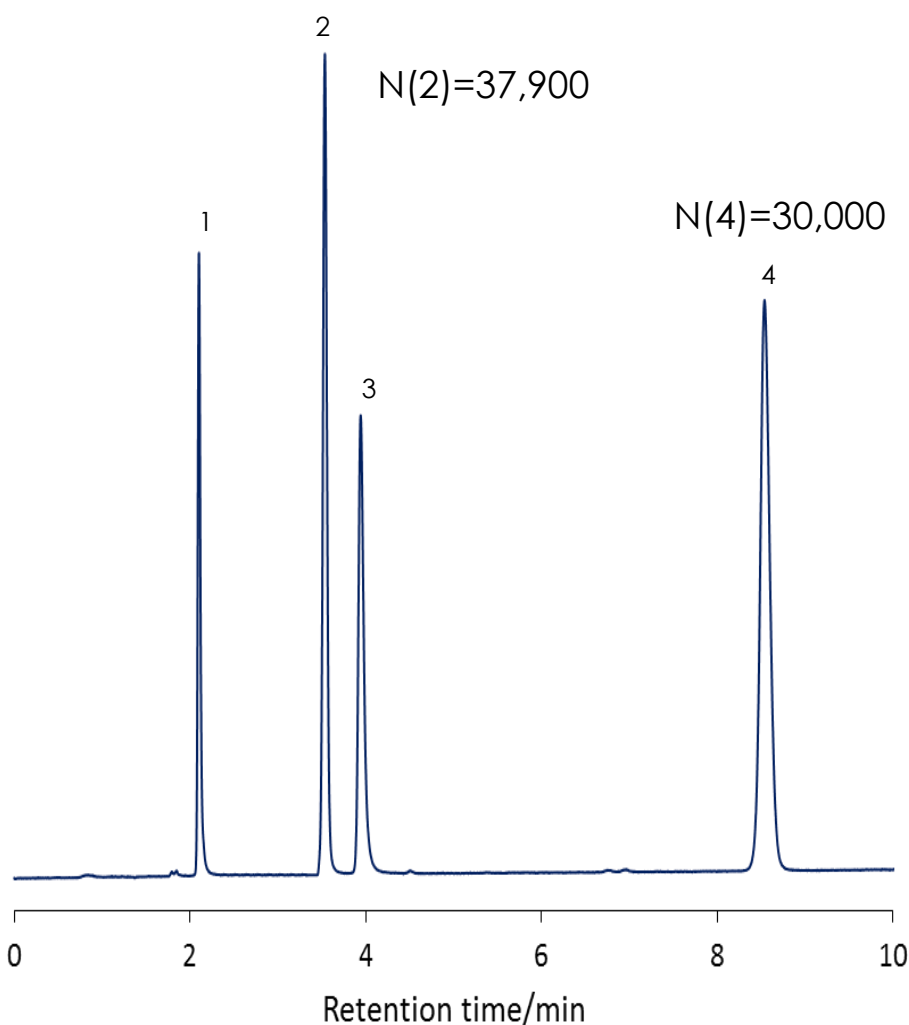


## ヌクレオチドの分離

### Nucleotides

SunShell RP-AQUA 2.6  $\mu\text{m}$ , 150 x 4.6 mm i.d.

#### SunShell RP-AQUA



Column: SunShell RP-AQUA 2.6 mm, 150 x 4.6 mm i.d.  
Mobile phase: 20mM Phosphate buffer pH6.0  
Flow rate: 1.0 mL/min  
Temperature: 25 °C  
Detection: UV@250nm  
Sample: 1 = 5'-GDP, 2 = 5'-ATP, 3 = 5'-ADP, 4 = 5'-AMP  
UHPLC: X-LC (Jasco)