

General Hydrophobic Interaction: C4 1500 and C4 3000

Hydrocell C4 1500

Protein Mixture

Column: 50 x 4.6 mm

Mobile Phase:

A: 2.5 M Ammonium Sulfate in Eluent B

B: 0.1 M Potassium Phosphate, pH 7.0

Gradient:

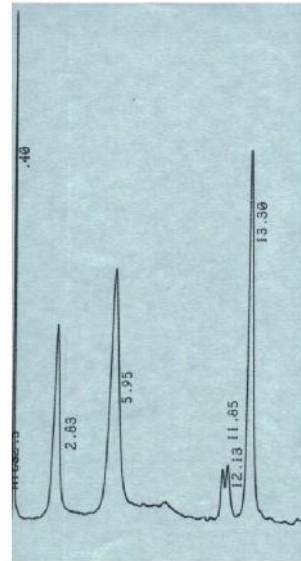
Linear 0-100% B in 20 minutes

Detection: UV 280 nm

Flow Rate: 1.0 mL/min.

Peak Identification:

1. Ribonuclease A
2. Lysozyme
3. Chymotrysinogen A



Hydrocell C4 3000

Protein Mixture

Column: 150 x 4.6 mm

Mobile Phase:

A: 2.5 M Ammonium Sulfate in Eluent B

B: 0.1 M Potassium Phosphate, pH 7.0

Gradient:

Linear 0-100% B in 20 minutes

Detection: UV 280 nm

Flow Rate: 1.0 mL/min.

Peak Identification:

1. Ribonuclease A
2. Lysozyme
3. Chymotrysinogen A

