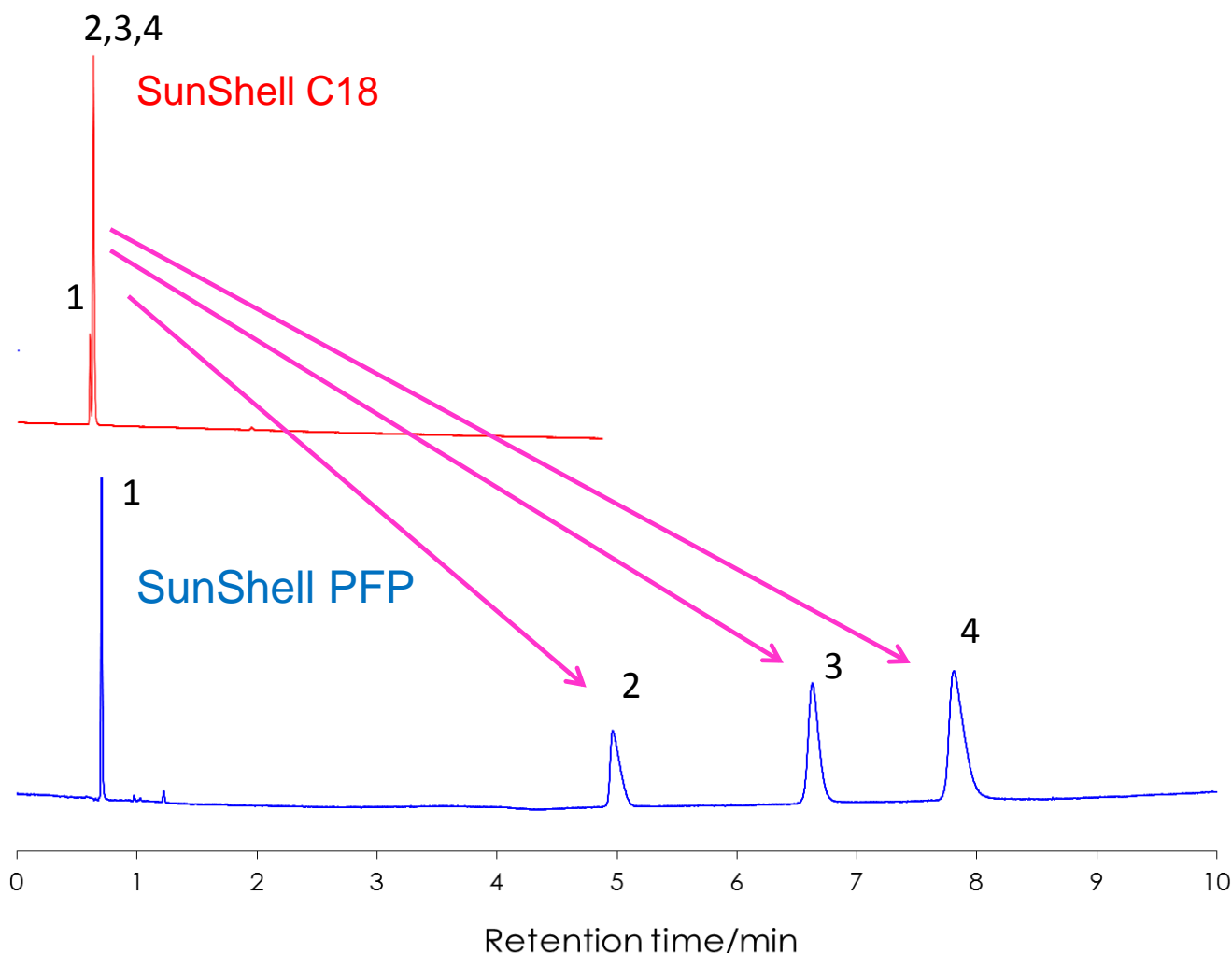


## PFPによる塩基性化合物の分離

### Basic compounds (PFP phase)

SunShell PFP and C18 2.6  $\mu$ m, 150 x 2.1 mm i.d.



Column: SunShell C18, PFP, 2.6 $\mu$ m 150 x 4.6 mm

Mobile phase: CH<sub>3</sub>CN/10mM Phosphate buffer pH7.0 = 80/20

Flow rate: 1.8 mL/min

Temperature: 25 °C

Sample: 1 = Uracil, 2 = Propranolol, 3 = Nortriptyline, 4 = Amitriptyline

