



Your LINK to quality, **American-Made**  
Crowd Control and Safety Products!



# 2015 Product Catalog

***We promise to offer the best customer service  
in the industry, hands down.***

**Testimonials**

*"It's really refreshing to work with someone who responds to a request so efficiently."*

**Nancy Trump  
Carlton Industries  
La Grange, TX**

*"Mr. Chain is one of our vendors who clearly understands the importance of "after service". Thanks again to all of you folks at Mr. Chain for the superb service."*

**Marc Goldman  
Crowd Control Warehouse  
Rolling Meadows, IL**

*"Customer service is never nearly that responsive and helpful so it's nice to know that some people still know how to do it correctly. Any future need I might have for your type of product I'm certainly going to come to you."*

**Kevin Hand  
Jersey City, NJ**

*"Thanks for the fast service. Competitive rates a bonus! Other vendor checked into was either higher prices or the amount needed to purchase was set for a larger business. Chain needed to block 4 bay garage to comply with OSHA."*

**Anonymous  
Amazon.com**

***"You've always provided great customer service from the beginning. Always prepared to answer any questions no matter how simple or complex and to resolve any issues with consideration."***

**Steve Indovino  
Indolutions  
Miller Place, NY**

***"I liked the quality of this product and the price was right. I really like the fact it is made here in the USA. I know the made in China brand of stanchions are not anywhere near the quality of this product."***

**Anonymous  
Amazon.com**

***"You have gone above and beyond what I had hoped a customer service representative for any company might do. I can say that I would (and will) recommend your products because of the incredible customer support I have received."***

**Steve Peters  
Kerrville, TX**

***Cover photo: Light Rail Transit In  
Minneapolis, MN, featuring Mr. Chain's  
4" Black Plastic Chain.***

---

**Chain**

Chain Chart	Page ii
NEW PRODUCT — Cone Chain Connector	Page 1
Plastic Chain	Page 2-7

---

**Chain Accessories**

Snap Reflector	Page 8
Master Links	Page 8
Magnet Ring/Carabiner Kit	Page 9
S-Hooks	Page 9
Connecting Links	Page 10
Snap Hooks	Page 10
Mr. Clips	Page 10

---

**Stanchions—Indoor/Outdoor**

Plastic Stanchions	Page 11-12
X-Treme Duty Stanchions	Page 12
Plastic Stanchion Kits	Page 13
Double Stranded Stanchions	Page 14
Metal Plated Stanchion Kits and Accessories	Page 14
Shipper Friendly Stanchions	Page 15
Specialty Stanchions—REFLECTIVE, Striped and Safety Labels	Page 15-16

---

**Stanchion Accessories**

Bases	Page 17
Poles	Page 17
Ball Tops / Handle	Page 18
C-Hooks/O-Rings	Page 18
Sign Adapters	Page 19
O-Rings	Page 19
Extension Pieces	Page 19

---

**Outdoor Products**

Ground Poles	Page 20
Ground Stakes	Page 20
Solid Colonial Ground Poles	Page 20
Utility Pegs	Page 20

<b>Policies</b>	Page 21-22
-----------------	------------

<b>Tensile Testing</b>	Page 22
------------------------	---------

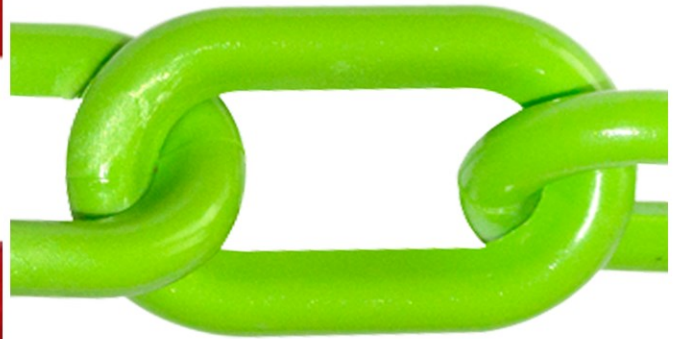




5" Chain Link



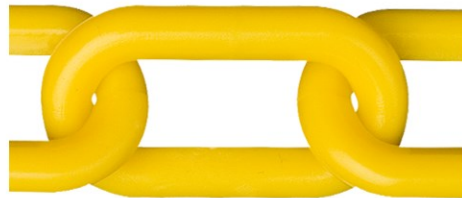
4" Chain Link



3" Chain Link



2" Heavy Duty Chain Link



2" Chain Link



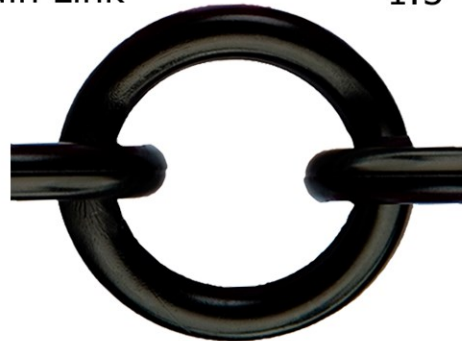
1.5" Chain Link



2" Gothic Chain Link



1" Gothic Chain Link



2" Ring Chain Link



1" Ring Chain Link



1" Chain Link



3/4" Chain Link



97413	Cone Chain Connector (C <sup>3</sup> )	\$2.99/Each
Fits most cones. Currently available in Traffic Orange. Additional colors coming soon.		

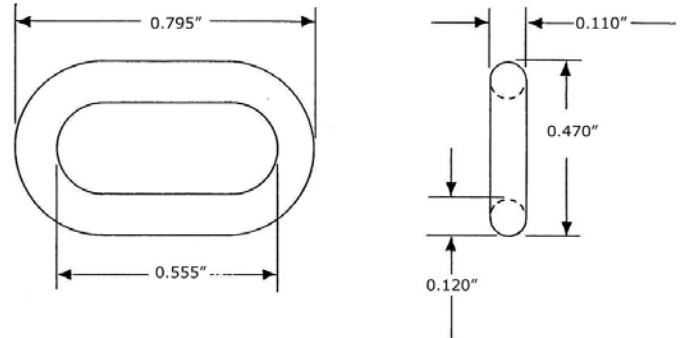
Other stock colors may be available for orders of 1,000 or more. Please call for pricing and availability.



## 3/4" Plastic Chain

000XX-C	Custom Length	\$0.62/Foot	Case Weight: N/A
000XX-100	100 Foot Box	\$62.10/Box	Case Weight: 2#
000XX-500	500 Foot Box	\$310.50/Box	Case Weight: 7#
001XX	200 Foot Reel	\$128.40/Reel	Case Weight: 4#
002XX	10- 9' 2" Pieces/Bag	\$56.92/10 Bags	Case Weight: 2#
<b>Bi-Color Prices:</b>			
000XX-C	Custom Length Bi-Color	\$0.96/Foot	Ship Weight: N/A

Color Code	Color	Color Code	Color
01	White	17	Fluorescent Orange
02	Yellow	18	Magenta
03	Black	19	Fluorescent Pink
04	Green	20 (Bi-Color)	Black/White
05	Red	29 (Bi-Color)	Black/Yellow
06	Blue	30 (Bi-Color)	Yellow/Magenta
07	Khaki Gold	35 (Bi-Color)	Red/White
08	Silver	36 (Bi-Color)	Red/Black
09	Gold	37 (Bi-Color)	Red/Yellow
12	Safety Orange	53	Fluorescent Green
14	Safety Green	54	Evergreen
		66	Cobalt Blue



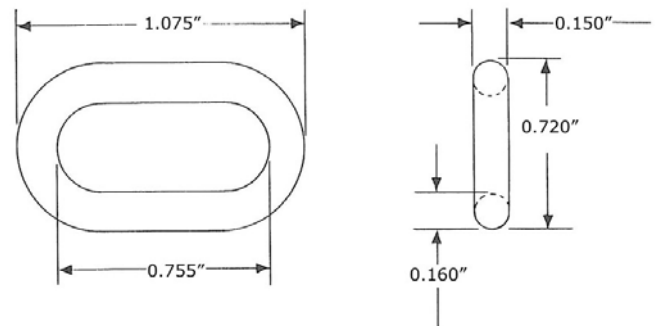
(3/8" Plastic Chain available in limited quantities and colors, call for details.)



## 1" Plastic Chain (#4)

100XX-C	Custom Length	\$0.71/Foot	Case Weight: N/A
100XX-100	100 Foot Box	\$70.60/Box	Case Weight: 3#
100XX-500	500 Foot Box	\$353.00/Box	Case Weight: 15#
100XX-P	350 Foot Pail	\$258.41/Pail	Case Weight: 12#
101XX	250 Foot Reel	\$182.00/Reel	Case Weight: 9#
102XX	10-9' 2" Pieces/Bag	\$64.84/10 Bags	Case Weight: 3#
<b>Bi-Color Prices:</b>			
100XX-C	Custom Length Bi-Color	\$1.11/Foot	Case Weight: N/A
100XX-100	100 Foot Box, Bi-Color	\$111.30/Box	Case Weight: 5#

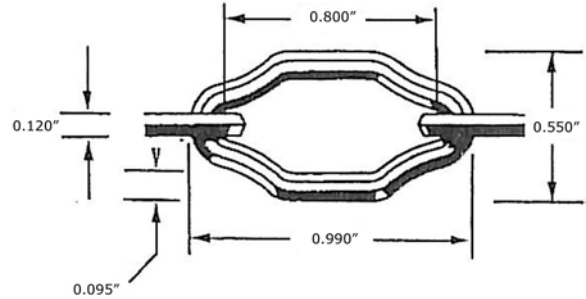
Color Code	Color	Color Code	Color
01	White	17	Fluorescent Orange
02	Yellow	18	Magenta
03	Black	19	Fluorescent Pink
04	Green	20 (Bi-Color)	Black/White
05	Red	29 (Bi-Color)	Black/Yellow
06	Blue	30 (Bi-Color)	Yellow/Magenta
07	Khaki Gold	35 (Bi-Color)	Red/White
08	Silver	36 (Bi-Color)	Red/Black
09	Gold	37 (Bi-Color)	Red/Yellow
12	Safety Orange	53	Fluorescent Green
14	Safety Green	54	Evergreen
		66	Cobalt Blue



# 1" Gothic Style Plastic Chain

130XX-C	Custom Length	\$0.63/Foot	Case Weight: N/A
130XX-100	100 Foot Box	\$63.00/Box	Case Weight: 2#
130XX-500	500 Foot Box	\$315.00/Box	Case Weight: 6#
130XX-P	400 Foot Pail	\$269.64/Pail	Case Weight: 7#
131XX	250 Foot Reel	\$163.25/Reel	Case Weight: 4#
132XX	10-6' 10" Pieces/Bag	\$54.25/10 Bags	Case Weight: 2#

Color Code	Color	Color Code	Color
01	White	17	Fluorescent Orange
02	Yellow	18	Magenta
03	Black	19	Fluorescent Pink
04	Green	53	Fluorescent Green
05	Red	54	Evergreen
06	Blue	66	Cobalt Blue
07	Khaki Gold		
08	Silver		
09	Gold		
12	Safety Orange		
14	Safety Green		



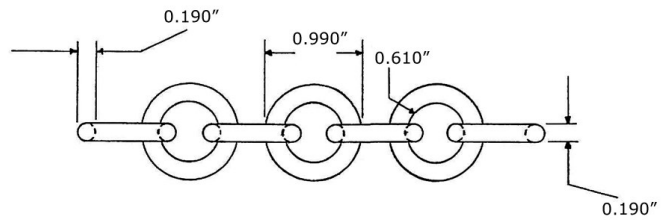
# 1" Ring Style Plastic Chain

140XX-C	Custom Length	\$0.78/Foot	Case Weight: N/A
140XX-100	100 Foot Box	\$78.20/Box	Case Weight: 6#
140XX-500	500 Foot Box	\$391.00/Box	Case Weight: 22#
140XX-P	220 Foot Pail	\$178.90/Pail	Case Weight: 12#
141XX	250 Foot Reel	\$200.75/Reel	Case Weight: 13#
142XX	10-6' Pieces/Bag	\$49.97/10 Bags	Case Weight: 3#

**Bi-Color Prices:**

140XX-C	Custom Length Bi-Color	Call For Pricing	Ship Weight: N/A
---------	------------------------	------------------	------------------

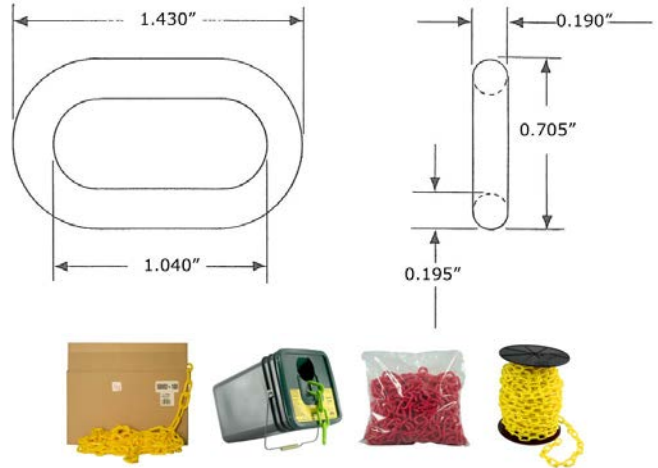
Color Code	Color	Color Code	Color
01	White	17	Fluorescent Orange
02	Yellow	18	Magenta
03	Black	19	Fluorescent Pink
04	Green	20 (Bi-Color)	Black/White
05	Red	29 (Bi-Color)	Black/Yellow
06	Blue	30 (Bi-Color)	Yellow/Magenta
07	Khaki Gold	35 (Bi-Color)	Red/White
08	Silver	36 (Bi-Color)	Red/Black
09	Gold	37 (Bi-Color)	Red/Yellow
12	Safety Orange	53	Fluorescent Green
14	Safety Green	54	Evergreen
		66	Cobalt Blue



# 1.5" Plastic Chain (#6)

300XX-C	Custom Length	\$0.78/Foot	Case Weight: N/A
300XX-100	100 Foot Box	\$78.20/Box	Case Weight: 4#
30022-C	Custom Length Glo-Chain	\$1.64/Foot	Case Weight: N/A
30022-100	100 Foot Box Glo-Chain (Photoluminescent)	\$164.00/Box	Case Weight: 4#
300XX-500	500 Foot Box	\$391.00/Box	Case Weight: 21#
300XX-P	300 Foot Pail	\$243.96/Pail	Case Weight: 15#
301XX	200 Foot Reel	\$160.60/Reel	Case Weight: 11#
302XX	10-9' Pieces/Bag	\$70.30/10 Bags	Case Weight: 4#
<b>Bi-Color Prices:</b>			
300XX-C	Custom Length Bi-Color	\$1.28/Foot	Case Weight: N/A
300XX-100	100 Foot Box, Bi-Color	\$128.00/Box	Case Weight: 4#

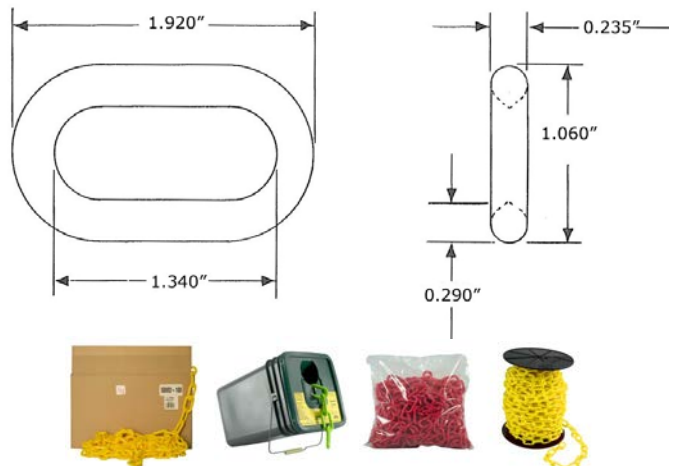
Color Code	Color	Color Code	Color
01	White	17	Fluorescent Orange
02	Yellow	18	Magenta
03	Black	19	Fluorescent Pink
04	Green	20 (Bi-Color)	Black/White
05	Red	23	Purple
06	Blue	29 (Bi-Color)	Black/Yellow
07	Khaki Gold	30 (Bi-Color)	Yellow/Magenta
08	Silver	35 (Bi-Color)	Red/White
09	Gold	36 (Bi-Color)	Red/Black
10	Brown	37 (Bi-Color)	Red/Yellow
12	Safety Orange	53	Fluorescent Green
14	Safety Green	54	Evergreen
		55	Cobalt Blue



# 2" Plastic Chain (#8)

500XX-C	Custom Length	\$0.91/Foot	Case Weight: N/A
500XX-100	100 Foot Box	\$91.00/Box	Case Weight: 7#
50022-C	Custom Length Glo-Chain	\$2.49/Foot	Case Weight: N/A
50022-100	100 Foot Box Glo-Chain (Photoluminescent)	\$249.00/Box	Case Weight: 7#
500XX-500	500 Foot Box	\$455.00/Box	Case Weight: 35#
500XX-P	160 Foot Pail	\$150.66/Pail	Case Weight: 15#
501XX	125 Foot Reel	\$116.38/Reel	Case Weight: 10#
502XX	10-8' 10" Pieces/Bag	\$84.42/10 Bags	Case Weight: 8#
<b>Bi-Color Prices:</b>			
500XX-C	Custom Length Bi-Color	\$1.50/Foot	Case Weight: N/A
500XX-100	100 Foot Box, Bi-Color	\$149.80/Box	Case Weight: 7#

Color Code	Color	Color Code	Color
01	White	17	Fluorescent Orange
02	Yellow	18	Magenta
03	Black	19	Fluorescent Pink
04	Green	20 (Bi-Color)	Black/White
05	Red	23	Purple
06	Blue	29 (Bi-Color)	Black/Yellow
07	Khaki Gold	30 (Bi-Color)	Yellow/Magenta
08	Silver	35 (Bi-Color)	Red/White
09	Gold	36 (Bi-Color)	Red/Black
10	Brown	37 (Bi-Color)	Red/Yellow
12	Safety Orange	53	Fluorescent Green
14	Safety Green	54	Evergreen
		55	Cobalt Blue

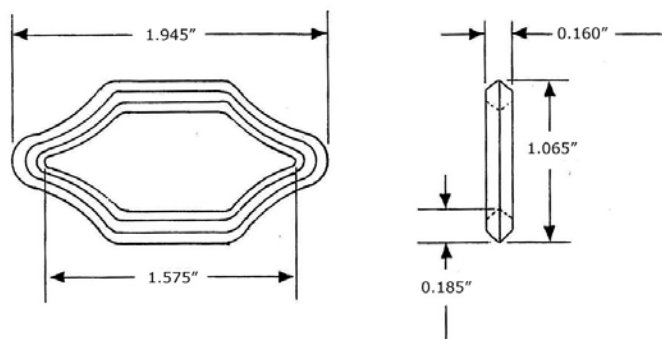




## 2" Gothic Style Plastic Chain

530XX-C	Custom Length	\$0.81/Foot	Case Weight: N/A
530XX-100	100 Foot Box	\$81.30/Box	Case Weight: 3#
530XX-500	500 Foot Box	\$406.50/Box	Case Weight: 14#
530XX-P	280 Foot Pail	\$242.68/Pail	Case Weight: 9#
531XX	200 Foot Reel	\$171.20/Reel	Case Weight: 7#
532XX	10-10' Pieces/Bag	\$81.30/10 Bags	Case Weight: 3#

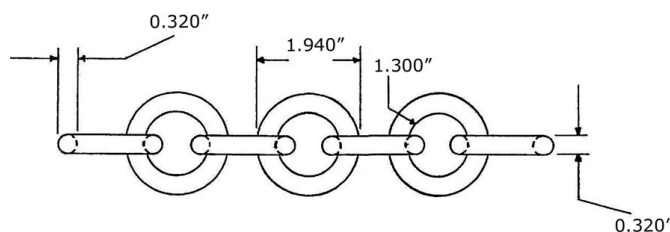
Color Code	Color	Color Code	Color
01	White	17	Fluorescent Orange
02	Yellow	18	Magenta
03	Black	19	Fluorescent Pink
04	Green	53	Fluorescent Green
05	Red	54	Evergreen
06	Blue	66	Cobalt Blue
07	Khaki Gold		
08	Silver		
09	Gold		
12	Safety Orange		
14	Safety Green		



## 2" Ring Style Plastic Chain

540XX-C	Custom Length	\$1.02/Foot	Case Weight: N/A
540XX-100	100 Foot Box	\$101.70/Box	Case Weight: 16#
540XX-250	250 Foot Box	\$508.50/Box	Case Weight: 40#
540XX-P	75 Foot Pail	\$79.45/Pail	Case Weight: 11#
541XX	75 Foot Reel	\$78.68/Reel	Case Weight: 11#
542XX	10-6' Pieces/Bag	\$63.99/10 Bags	Case Weight: 8#
<b>Bi-Color Pricing:</b>			
540XX-C	Custom Length Bi-Color	\$1.61/Foot	Case Weight: N/A

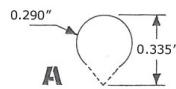
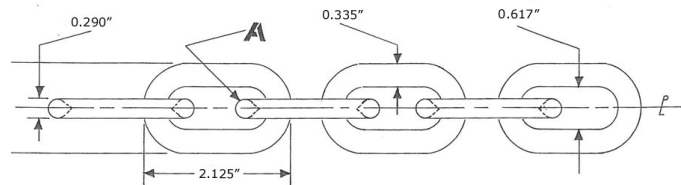
Color Code	Color	Color Code	Color
01	White	17	Fluorescent Orange
02	Yellow	18	Magenta
03	Black	19	Fluorescent Pink
04	Green	20 (Bi-Color)	Black/White
05	Red	29 (Bi-Color)	Black/Yellow
06	Blue	30 (Bi-Color)	Yellow/Magenta
07	Khaki Gold	35 (Bi-Color)	Red/White
08	Silver	36 (Bi-Color)	Red/Black
09	Gold	37 (Bi-Color)	Red/Yellow
12	Safety Orange	53	Fluorescent Green
14	Safety Green	54	Evergreen
		66	Cobalt Blue



## 2" Heavy Duty Plastic Chain

510XX-C	Custom Length	\$0.96/Foot	Case Weight: N/A
510XX-100	100 Foot Box	\$96.30/Box	Case Weight: 11#
510XX-500	500 Foot Box	\$481.50/Box	Case Weight: 50#
510XX-P	120 Foot Pail	\$120.70/Pail	Case Weight: 13#
511XX	100 Foot Reel	\$99.50/Reel	Case Weight: 12#
<b>Bi-Color Prices:</b>			
510XX-C	Custom Length Bi-Color	\$1.54/Foot	Case Weight: N/A
510XX-100	100 Foot Box, Bi-Color	\$151.40/Box	Case Weight: 11#

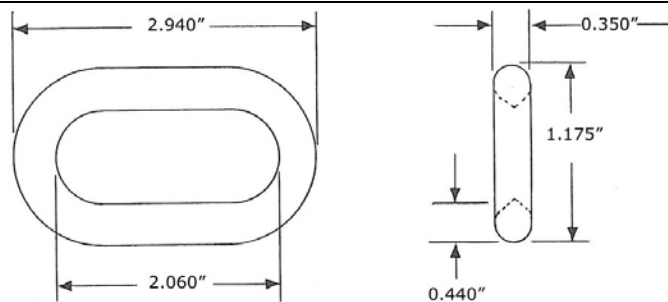
Color Code	Color	Color Code	Color
01	White	17	Fluorescent Orange
02	Yellow	18	Magenta
03	Black	19	Fluorescent Pink
04	Green	20 (Bi-Color)	Black/White
05	Red	29 (Bi-Color)	Black/Yellow
06	Blue	30 (Bi-Color)	Yellow/Magenta
07	Khaki Gold	35 (Bi-Color)	Red/White
08	Silver	36 (Bi-Color)	Red/Black
09	Gold	37 (Bi-Color)	Red/Yellow
12	Safety Orange	53	Fluorescent Green
14	Safety Green	54	Evergreen
		66	Cobalt Blue



## 3" Plastic Chain (#10)

800XX-C	Custom Length	\$1.36/Foot	Case Weight: N/A
800XX-100	100 Foot Box	\$135.90/Box	Case Weight: 16#
80022-C	Custom Length Glo-Chain	\$4.87/Foot	Case Weight: N/A
80022-100	100 Foot Box Glo-Chain (Photoluminescent)	\$487.00/Box	Case Weight: 16#
800XX-300	300 Foot Box	\$407.70/Box	Case Weight: 46#
800XX-P	70 Foot Pail	\$97.37/Pail	Case Weight: 13#
801XX	60 Foot Reel	\$82.86/Reel	Case Weight: 11#
802XX	10-4' 6" Feet/Bag	\$63.24/10 Bags	Case Weight: 10#
<b>Bi-Color Prices:</b>			
800XX-C	Custom Length Bi-Color	\$1.97/Foot	Case Weight: N/A
800XX-100	100 Foot Box, Bi-Color	\$196.88/Box	Case Weight: 16#

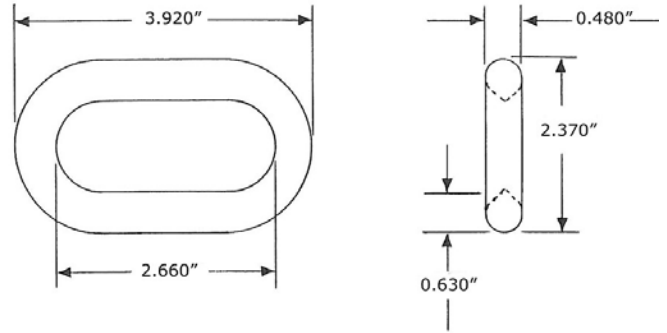
Color Code	Color	Color Code	Color
01	White	17	Fluorescent Orange
02	Yellow	18	Magenta
03	Black	19	Fluorescent Pink
04	Green	20 (Bi-Color)	Black/White
05	Red	23	Purple
06	Blue	29 (Bi-Color)	Black/Yellow
07	Khaki Gold	30 (Bi-Color)	Yellow/Magenta
08	Silver	35 (Bi-Color)	Red/White
09	Gold	36 (Bi-Color)	Red/Black
10	Brown	37 (Bi-Color)	Red/Yellow
12	Safety Orange	53	Fluorescent Green
14	Safety Green	54	Evergreen
		66	Cobalt Blue



## 4" Plastic Chain

400XX-C	Custom Length	\$2.86/Foot	Case Weight: N/A
400XX-100	100 Foot Box	\$285.70/Box	Case Weight: 31#
400XX-P	35 Foot Pail	\$101.12/Pail	Case Weight: 12#
<b>Bi-Color Pricing:</b>			
400XX-C	Custom Length Bi-Color	Call For Pricing	Case Weight: N/A

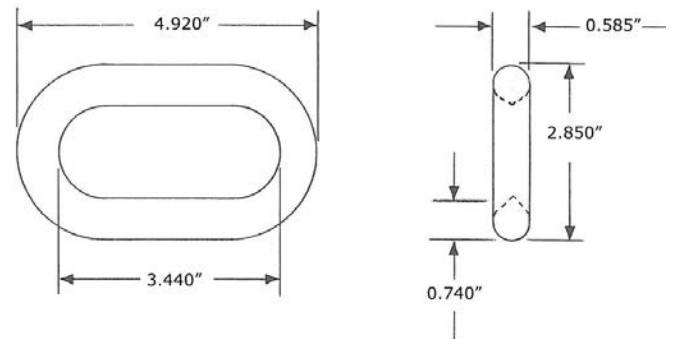
Color Code	Color	Color Code	Color
01	White	17	Fluorescent Orange
02	Yellow	18	Magenta
03	Black	19	Fluorescent Pink
04	Green	20 (Bi-Color)	Black/White
05	Red	29 (Bi-Color)	Black/Yellow
06	Blue	30 (Bi-Color)	Yellow/Magenta
07	Khaki Gold	35 (Bi-Color)	Red/White
08	Silver	36 (Bi-Color)	Red/Black
09	Gold	37 (Bi-Color)	Red/Yellow
12	Safety Orange	53	Fluorescent Green
14	Safety Green	54	Evergreen
		66	Cobalt Blue



## 5" Plastic Chain

600XX-C	Custom Length	\$3.82/Foot	Case Weight: N/A
600XX-100	100 Foot Box	\$382.00/Box	Case Weight: 39#
<b>Bi-Color Pricing:</b>			
600XX-C	Custom Length Bi-Color	Call For Pricing	Case Weight: N/A

Color Code	Color	Color Code	Color
01	White	17	Fluorescent Orange
02	Yellow	18	Magenta
03	Black	19	Fluorescent Pink
04	Green	20 (Bi-Color)	Black/White
05	Red	29 (Bi-Color)	Black/Yellow
06	Blue	30 (Bi-Color)	Yellow/Magenta
07	Khaki Gold	35 (Bi-Color)	Red/White
08	Silver	36 (Bi-Color)	Red/Black
09	Gold	37 (Bi-Color)	Red/Yellow
12	Safety Orange	53	Fluorescent Green
14	Safety Green	54	Evergreen
		66	Cobalt Blue





## Snap Reflector

84003	Snap Reflector	\$2.29 each	Case Weight: N/A
84003-6	Snap Reflector 6/Bag	\$13.74/bag	Case Weight: 2#

Available in Black only.



## Master Links

007XX	3/4" Master Link	\$0.25 each	Case Weight: N/A
007XX-10	3/4" Master Link 10/Bag	\$2.49/bag	Case Weight: 1#
107XX	1" Master Link	\$0.32 each	Case Weight: N/A
107XX-10	1" Master Link 10/Bag	\$3.21/bag	Case Weight: 1#
147XX	1" Ring Master Link	\$0.38 each	Case Weight: N/A
147XX-10	1" Ring Master Link 10/Bag	\$3.75/bag	Case Weight: 1#
307XX	1.5" Master Link	\$0.38 each	Case Weight: N/A
307XX-10	1.5" Master Link 10/Bag	\$3.75/bag	Case Weight: 1#
507XX	2" Master Link	\$0.45 each	Case Weight: N/A
507XX-10	2" Master Link 10/Bag	\$4.49/bag	Case Weight: 1#
547XX	2" Ring Master Link	\$0.55 each	Case Weight: N/A
547XX-10	2" Ring Master Link 10/Bag	\$5.46/bag	Case Weight: 1#
517XX	2" Heavy Duty Master Link	\$0.55 each	Case Weight: N/A
517XX-10	2" Heavy Duty Master Link 10/Bag	\$5.54/bag	Case Weight: 1#
807XX	3" Master Link	\$1.03 each	Case Weight: N/A
807XX-10	3" Master Link 10/Bag	\$10.27/bag	Case Weight: 2#
407XX	4" Master Link	\$2.03 each	Case Weight: N/A
407XX-10	4" Master Link 10/Bag	\$20.33/bag	Case Weight: 2#
607XX	5" Master Link	\$2.72 each	Case Weight: N/A
607XX-10	5" Master Link 10/Bag	\$27.18/bag	Case Weight: 2#

Color Code	Color
01	White
02	Yellow
03	Black
04	Green
05	Red
06	Blue
07	Khaki Gold
08	Silver
09	Gold
10	Brown avail. In 1.5", 2", and 3" only

Color Code	Color
12	Safety Orange
14	Safety Green
16	Brown
17	Fluorescent Orange
18	Magenta
19	Fluorescent Pink Purple avail. In 1.5", 2", and 3" only
23	Fluorescent Green
53	Evergreen
54	Evergreen
66	Cobalt Blue



## Magnet Ring/Carabiner Kit

72302	Loading Dock Kit	\$25.59	Case Weight: 2#
<b>Kit Includes:</b> 2-magnet rings, 2-carabiners and 1-10' piece of 2" heavy duty yellow chain. (This kit is made to fit a standard 9' wide door. For other size door openings, chain should be ordered separately.)			
72103	Magnet Ring/Carabiner Kit	\$15.99/Kit	Case Weight: 1#
90403	Magnet Ring	\$4.49 each	Case Weight: 1#
92503	Carabiner	\$3.59 each	Case Weight: 1#
Each Kit Includes: 2 Magnet Rings and 2 Carabiners. Available in Black only.			



## S-Hooks

003XX	3/4" S-Hook	\$ .25 each	Case Weight: N/A
003XX-10	3/4" S-Hook 10/Bag	\$2.45/bag	Case Weight: 1#
103XX	1" S-Hook	\$0.32 each	Case Weight: N/A
103XX-10	1" S-Hook 10/Bag	\$3.21/bag	Case Weight: 1#
303XX	1.5" S-Hook	\$0.38 each	Case Weight: N/A
303XX-10	1.5" S-Hook 10/Bag	\$3.75/bag	Case Weight: 1#
503XX	2" S-Hook	\$0.45 each	Case Weight: N/A
503XX-10	2" S-Hook 10/Bag	\$4.49/bag	Case Weight: 1#
803XX	3" S-Hook	\$1.03 each	Case Weight: N/A
803XX-10	3" S-Hook 10/Bag	\$10.30/bag	Case Weight: 1#
403XX	4" S-Hook	\$2.03 each	Case Weight: N/A
403XX-10	4" S-Hook 10/Bag	\$20.33/bag	Case Weight: 2#
603XX	5" S-Hook	\$2.72 each	Case Weight: N/A
603XX-10	5" S-Hook 10/Bag	\$27.18/bag	Case Weight: 2#

Color Code	Color	Color Code	Color
01	White	12	Safety Orange
02	Yellow	14	Safety Green
03	Black	17	Fluorescent Orange
04	Green	18	Magenta
05	Red	19	Fluorescent Pink
06	Blue	53	Fluorescent Green
07	Khaki Gold	54	Evergreen
08	Silver	66	Cobalt Blue
09	Gold		



## Connecting Links

309XX	Small Connecting Link (fits 1" - 1.5" chain)	\$0.37 each	Case Weight: N/A
309XX-10	Small Connecting Link 10/Bag (fits 1" - 1.5" chain)	\$3.70/bag	Case Weight: 1#
509XX	Large Connecting Link (fits 2" - 2" heavy duty chain)	\$0.45 each	Case Weight: N/A
509XX-10	Large Connecting Link 10/Bag (fits 2" - 2" heavy duty chain)	\$4.49/bag	Case Weight: 1#

Color Code	Color	Color Code	Color
01	White	12	Safety Orange
02	Yellow	14	Safety Green
03	Black	17	Fluorescent Orange
04	Green	18	Magenta
05	Red	19	Fluorescent Pink
06	Blue	23	Purple
07	Khaki Gold	53	Fluorescent Green
08	Silver	54	Evergreen
09	Gold	66	Cobalt Blue
10	Brown		



## Snap Hooks

957XX	Small Snap Hook (fits 1"-3" chain)	\$1.09 each	Case Weight: N/A
957XX-10	Small Snap Hook 10/Bag (fits 1"-3" chain)	\$10.91/bag	Case Weight: 1#
958XX	Large Snap Hook (fits 2"-4" chain)	\$1.83 each	Case Weight: N/A
958XX-10	Large Snap Hook 10/Bag (fits 2"-4" chain)	\$18.30/bag	Case Weight: 1#

Color Code	Color
01	White
02	Yellow
03	Black



## Mr. Clips—Wire Marker

190XX	1" Mr. Clip	\$0.17 each	Case Weight: N/A
190XX-10	1" Mr. Clip 10/Bag	\$1.71/bag	Case Weight: 1#
390XX	1.5" Mr. Clip	\$0.20 each	Case Weight: N/A
390XX-10	1.5" Mr. Clip 10/Bag	\$2.02/bag	Case Weight: 1#
590XX	2" Mr. Clip	\$0.25 each	Case Weight: N/A
590XX-10	2" Mr. Clip 10/Bag	\$2.46/bag	Case Weight: 1#

Color Code	Color	Color Code	Color
01	White	12	Safety Orange
02	Yellow	14	Safety Green
03	Black	17	Fluorescent Orange
04	Green	18	Magenta
05	Red	19	Fluorescent Pink
06	Blue	23	Purple
07	Khaki Gold	53	Fluorescent Green
08	Silver	54	Evergreen
09	Gold	66	Cobalt Blue
10	Brown		





## 2" Plastic Stanchions (33" Overall Height and 41" Overall Height)

914XX	2" Plastic Stanchion (33" Overall Height)	\$30.00 each	Case Weight: 2#
914XX-6	2" Plastic Stanchion-6 Pack (33" Overall Height)	\$180.02/Pack	Case Weight: 10#
915XX	2" Plastic Stanchion (41" Overall Height)	\$31.24 each	Case Weight: 3#
915XX-6	2" Plastic Stanchion (41" Overall Height)	\$187.46/Pack	Case Weight: 11#
<b>Striped Stanchion Prices:</b>			
915XX	2" Plastic Stanchion (41" Overall Height)	\$48.75 each	Case Weight: 3#
915XX-6	2" Plastic Stanchion-6 Pack (41" Overall Height)	\$292.50/Pack	Case Weight: 11#
<b>One complete stanchion includes:</b> 1-2" diameter pole, 1-2" c-hook, 1-2" ball top, and 1-14" base for the 2" stanchion.			
Perforated slots on the 2" and 2.5" poles allow chain to be hung with c-hooks or in one continuous length.			

Color Code	Color	Striped Code	Color Stanchion/Stripe
01	White	20	Black/White
02	Yellow	25	Blue/White
03	Black	27	Orange/White
05	Red	29	Black/Yellow
06	Blue	30	Yellow/Magenta
12	Safety Orange	35	Red/White
14	Safety Green	36	Red/Black
19	Yellow pole, black base and top	37	Red/Yellow
21	Black pole and base, white top		



## 2.5" Plastic Stanchions (40" Overall Height)

964XX	2.5" Plastic Stanchion	\$35.13 each	Case Weight: 4#
964XX-6	2.5" Plastic Stanchion-6 Pack	\$210.77/Pack	Case Weight: 18#
963XX-6	2.5" Plastic Stanchion with <i>Solar Ball Top</i> -6 Pack (ball top glows orange)	\$264.77/Pack	Case Weight: 20#
<b>Striped Stanchion Prices:</b>			
964XX	2.5" Plastic Stanchion	\$53.88 each	Case Weight: 4#
964XX-6	2.5" Plastic Stanchion -6 Pack	\$323.25/Pack	Case Weight: 18#
<b>One complete stanchion includes:</b> 1-2.5" diameter pole, 1-2.5" c-hook, 1-2.5" ball top, and 1-14" base for the 2.5" stanchion.			
Perforated slots on the 2" and 2.5" poles allow chain to be hung with c-hooks or in one continuous length.			

Color Code	Color	Striped Code	Color Stanchion/Stripe
01	White	20	Black/White
02	Yellow	25	Blue/White
03	Black	27	Orange/White
05	Red	29	Black/Yellow
06	Blue	30	Yellow/Magenta
12	Safety Orange	35	Red/White
14	Safety Green	36	Red/Black
19	Yellow pole, black base and top	37	Red/Yellow
21	Black pole and base, white top		



## 3" Plastic Stanchions (41" Overall Height)

999XX	3" Plastic Stanchion	\$38.99 each	Case Weight: 5#
999XX-4	3" Plastic Stanchion-4 Pack	\$155.96/Pack	Case Weight: 16#
999XX-6	3" Plastic Stanchion-6 Pack	\$233.95/Pack	Case Weight: 21#
<b>Striped Stanchion Prices:</b>			
999XX	3" Plastic Stanchion	\$60.50 each	Case Weight: 5#
999XX-4	3" Plastic Stanchion -4 Pack	\$241.99/Pack	Case Weight: 16#
<b>One complete stanchion includes:</b> 1-3" diameter pole, 1-3" c-hook, 1-3" ball top, and 1-16" base for the 3" stanchion. Must use C-hook.			

Color Code	Color	Striped Code	Color Stanchion/Stripe
01	White	20	Black/White
02	Yellow	25	Blue/White
03	Black	27	Orange/White
05	Red	29	Black/Yellow
06	Blue	30	Yellow/Magenta
12	Safety Orange	35	Red/White
14	Safety Green	36	Red/Black
19	Yellow pole, black base and top	37	Red/Yellow
21	Black pole and base, white top		



## X-Treme Duty Stanchions (46.5" Overall Height)

923XX	X-Treme Duty Plastic Stanchion	\$71.83 each	Case Weight: 9#
923XX-2	X-Treme Duty Plastic Stanchion-2 Pack	\$143.65/Pack	Case Weight: 18#
<b>One complete stanchion includes:</b> 2-3" diameter poles (16" long), 1-handle top, 1-extension piece, and 1-base with water bladder for ballast.			

Color Code	Color
02	Yellow
03	Black
88	Yellow/Black



### Stanchion Features:

- Wheels on base
- Ribbed handle
- Built in C-Hooks
- Keyhole slot
- Water bladder for ballast



## Plastic Stanchion Kits

710XX-6	2" Plastic Stanchion Kit	\$241.35/Kit	Case Weight: 16#
<b>Kit Includes:</b> 6-complete stanchions and 50' of 2" chain.			
711XX-6	2.5" Plastic Stanchion Kit	\$268.44/Kit	Case Weight: 20#
<b>Kit Includes:</b> 6-complete stanchions and 50' of 2" chain.			
713XX-4	3" Plastic Stanchion Kit	\$194.83/Kit	Case Weight: 20#
<b>Kit Includes:</b> 4-complete stanchions and 30' of 2" heavy duty chain.			
Perforated slots on the 2" and 2.5" poles allow chain to be hung with c-hooks or in one continuous length. 3" Poles must use C-hook.			

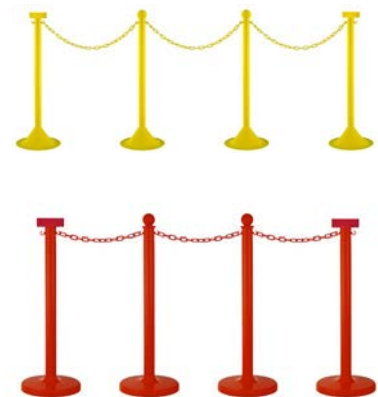
Color Code	Color	Striped Code	Color Stanchion/Stripe
01	White	20	Black/White
02	Yellow	29	Black/Yellow
03	Black	30	Yellow/Magenta
05	Red	35	Red/White
06	Blue	36	Red/Black
12	Safety Orange	37	Red/Yellow
14	Safety Green		



## Public Safety Kits

915XX-4	2" Public Safety Kit	\$149.75/Kit	Case Weight: 16#
<b>Kit Includes:</b> 4-poles, 4-bases, 4-c-hooks, 2-sign adapters (1.25" deep; holds signs up to 1/16" thick), 4-ball tops and 3- 10ft. pieces of 2" chain.			
964XX-4	2.5" Public Safety Kit	\$171.15/Kit	Case Weight: 20#
<b>Kit Includes:</b> 4-poles, 4-bases, 4-c-hooks, 2-sign adapters (1.25" deep; holds signs up to 1/16" thick), 4-ball tops and 3- 10ft. pieces of 2" chain.			
999XX-4	3" Public Safety Kit	\$192.55/Kit	Case Weight: 20#
<b>Kit Includes:</b> 4-poles, 4-bases, 4-c-hooks, 2-sign adapters (1.25" deep; holds signs up to 1/16" thick), 4-ball tops and 3- 10ft. pieces of 2" heavy duty chain.			
Perforated slots on the 2" and 2.5" poles allow chain to be hung with c-hooks or in one continuous length. 3" Poles must use C-hook.			

Color Code	Color
47	Blue
48	Safety Green
72	White
73	Yellow
74	Black
75	Red
76	Safety Orange





## Double Stranded Stanchion

959XX	Double Stranded Stanchion	\$38.14 each	Case Weight: 3#
959XX-6	Double Stranded Stanchion-6 Pack	\$228.81/Pack	Case Weight: 12#

**One complete stanchion includes:** 1-2" pole (24" long), 1-2" pole (12" long), 1-14" base for the 2" stanchion, 2-small O-rings, 1-c-hook, 1-2" ball top, 1-2" extension piece. (Chain sold separately.)

Color Code	Color	Color Code	Color
01	White	05	Red
02	Yellow	06	Blue
03	Black	12	Safety Orange
		14	Safety Green



## Metal Plated Stanchion Kits (40" Overall Height)

<b>Brass Plated Stanchion Prices:</b>			
96437-4	2.5" Metal Plated Stanchion	\$281.72/Kit	Case Weight: 16#
96537-4	2.5" Metal Plated Stanchion with Glass Solar Ball Top	\$302.72/Kit	Case Weight: 20#
<b>Chrome Plated Stanchion Prices:</b>			
96438-4	2.5" Metal Plated Stanchion	\$281.72/Kit	Case Weight: 16#
96538-4	2.5" Metal Plated Stanchion with Glass Solar Ball Top	\$302.72/Kit	Case Weight: 20#
<b>Black Chrome Plated Stanchion Prices:</b>			
96439-4	2.5" Metal Plated Stanchion	\$299.35/Kit	Case Weight: 16#
96539-4	2.5" Metal Plated Stanchion with Glass Solar Ball Top	\$320.35/Kit	Case Weight: 20#

**One complete stanchion includes:** 1-2.5" diameter pole, 1-2.5" c-hook, 1-2.5" ball top, and 1-14" base for the 2.5" stanchion.  
**Kits Includes:** 4-complete stanchions and 3-8'10" sections of chain.



## Metal Plated Stanchion Accessories

<b>Brass Plated Accessories Prices:</b>			
92737	2.5" Metal Plated Sign Adapter—1.25" deep; holds signs up to 1/16" thick	\$5.76 each	Case Weight: N/A#
51737	2" HD Metal Plated Master Link	\$0.58 each	Case Weight: N/A#
51037-10	10' - 2" HD Plated Chain	\$19.86 each	Case Weight: N/A#
<b>Chrome Plated Accessories Prices:</b>			
92738	2.5" Metal Plated Sign Adapter—1.25" deep; holds signs up to 1/16" thick	\$5.76 each	Case Weight: N/A#
51738	2" HD Metal Plated Master Link	\$0.58 each	Case Weight: N/A#
51038-10	10' - 2" HD Plated Chain	\$19.86 each	Case Weight: N/A#
<b>Black Chrome Plated Accessories Prices:</b>			
92739	2.5" Metal Plated Sign Adapter—1.25" deep; holds signs up to 1/16" thick	\$5.94 each	Case Weight: N/A#
51739	2" HD Metal Plated Master Link	\$0.59 each	Case Weight: N/A#
51037-10	10' - 2" HD Plated Chain	\$20.56 each	Case Weight: N/A#

## Shipper Friendly Stanchions

934XX	2" Shipper Friendly Stanchion (33" Overall Height)	\$34.38 each	Case Weight: 3#
935XX	2" Shipper Friendly Stanchion (41" Overall Height)	\$35.64 each	Case Weight: 4#
937XX	2.5" Shipper Friendly Stanchion	\$40.05 each	Case Weight: 5#
936XX	3" Shipper Friendly Stanchion	\$44.45 each	Case Weight: 5#

**Shipper Friendly Stanchion includes:** 2-poles (one with slots and one without), 1-extension piece, 1-c-hook, 1-ball top, and 1-base.

Perforated slots on the 2" and 2.5" poles allow chain to be hung with c-hooks or in one continuous length.

Color Code	Color	Color Code	Color
01	White	06	Blue
02	Yellow	12	Safety Orange
03	Black	14	Safety Green
05	Red		



## 2" Specialty Plastic Stanchions (41" Overall Height)

### REFLECTIVE Striped Stanchion Prices:

915XX	2" REFLECTIVE Striped Plastic Stanchion	\$48.75 each	Case Weight: 3#
915XX-6	2" REFLECTIVE Striped Plastic Stanchion -6 Pack	\$292.50/Pack	Case Weight: 12#

**Safety Label Stanchion Prices:** (When ordering please specify: Caution, Wet Floor, Do Not Enter, No Smoking, High Voltage, Handicap or Custom. \*\$25.00 set up fee for custom labels.)

915XX	2" Safety Label Plastic Stanchion	\$48.36 each	Case Weight: 3#
915XX-6	2" Safety Label Plastic Stanchion-6 Pack	\$290.18/Pack	Case Weight: 12#

**One complete stanchion includes:** 1-2" diameter pole, 1-2" c-hook, 1-2" ball top, and 1-14" base for the 2" stanchion.

Perforated slots on the 2" and 2.5" poles allow chain to be hung with c-hooks or in one continuous length.

REFLECTIVE Stripe Code	Stanchion Color	Safety Label Code	Stanchion Color
46	White	69	White
49	Yellow	71	Yellow
50	Black	70	Black
51	Red	68	Red
42	Blue	65	Blue
78	Safety Orange	67	Safety Orange
77	Safety Green	44	Safety Green



## 2.5" Specialty Plastic Stanchions (40" Overall Height)

### REFLECTIVE Striped Stanchion Prices:

964XX	2.5" REFLECTIVE Striped Plastic Stanchion	\$53.88 each	Case Weight: 4#
964XX-6	2.5" REFLECTIVE Striped Plastic Stanchion-6 Pack	\$323.25/Pack	Case Weight: 18#

**Safety Label Stanchion Prices:** (When ordering please specify: Caution, Wet Floor, Do Not Enter, No Smoking, High Voltage, Handicap or Custom. \*\$25.00 set up fee for custom labels.)

964XX	2.5" Safety Label Plastic Stanchion	\$52.25 each	Case Weight: 4#
964XX-6	2.5" Safety Label Plastic Stanchion-6 Pack	\$313.49/Pack	Case Weight: 18#

**One complete stanchion includes:** 1-2.5" diameter pole, 1-2.5" c-hook, 1-2.5" ball top, and 1-16" base for the 2.5" stanchion.

Perforated slots on the 2" and 2.5" poles allow chain to be hung with c-hooks or in one continuous length.

REFLECTIVE Stripe Code	Stanchion Color	Safety Label Code	Stanchion Color
46	White	69	White
49	Yellow	71	Yellow
50	Black	70	Black
51	Red	68	Red
42	Blue	65	Blue
78	Safety Orange	67	Safety Orange
77	Safety Green	44	Safety Green



## 3" Specialty Plastic Stanchions (41" Overall Height)

### REFLECTIVE Striped Stanchion Prices:

999XX	3" REFLECTIVE Striped Plastic Stanchion	\$60.50 each	Case Weight: 5#
999XX-4	3" REFLECTIVE Striped Plastic Stanchion-4 Pack	\$241.99/Pack	Case Weight: 16#
999XX-6	3" REFLECTIVE Striped Plastic Stanchion-6 Pack	\$362.99/Pack	Case Weight: 21#

**Safety Label Stanchion Prices:** (When ordering please specify: Caution, Wet Floor, Do Not Enter, No Smoking, High Voltage, Handicap or Custom. \*\$25.00 set up fee for custom labels.)

999XX	3" Safety Label Plastic Stanchion	\$56.11 each	Case Weight: 5#
999XX-4	3" Safety Label Plastic Stanchion-4 Pack	\$224.44/Pack	Case Weight: 16#
999XX-6	3" Safety Label Plastic Stanchion-6 Pack	\$336.66/Pack	Case Weight: 21#

**One complete stanchion includes:** 1-3" diameter pole, 1-3" c-hook, 1-3" ball top, and 1-14" base for the 3" stanchion. Must use C-hook.

REFLECTIVE Stripe Code	Stanchion Color	Safety Label Code	Stanchion Color
46	White	69	White
49	Yellow	71	Yellow
50	Black	70	Black
51	Red	68	Red
42	Blue	65	Blue
78	Safety Orange	67	Safety Orange
77	Safety Green	44	Safety Green



## Stanchion Bases

942XX	2" Stanchion Base	\$22.50 each	Case Weight: 2#
994XX	2.5" Stanchion Base	\$28.14 each	Case Weight: 2#
996XX	3" Stanchion Base	\$31.24 each	Case Weight: 2#
990XX	X-Treme Duty Stanchion Base* (Contains water bladder for ballast. Compatible with the 3" pole only.)	\$50.75 each	Case Weight: N/A

\*Available in 02-Yellow, 03-Black, or 88-Yellow/Black

Color Code	Color	Color Code	Color
01	White	06	Blue
02	Yellow	12	Safety Orange
03	Black	14	Safety Green
05	Red	88	Yellow/Black*

\*X-Treme ONLY



## Stanchion Poles

944XX	2" Diameter Pole, 12" Long	\$1.89 each	Case Weight: 1#
945XX	2" Diameter Pole, 16" Long	\$2.52 each	Case Weight: 1#
946XX	2" Diameter Pole, 24" Long	\$3.82 each	Case Weight: 1#
947XX	2" Diameter Pole, 32" Long	\$5.04 each	Case Weight: 1#
966XX	2.5" Diameter Pole, 33 1/2" Long	\$9.06 each	Case Weight: 1#
977XX	3" Diameter Pole, 32" Long	\$10.07 each	Case Weight: 2#

Perforated slots on the 2" and 2.5" poles allow chain to be hung with c-hooks or in one continuous length. 3" Poles must use C-hooks.

Color Code	Color	Color Code	Color
01	White	06	Blue
02	Yellow	12	Safety Orange
03	Black	14	Safety Green
05	Red		





## Stanchion Ball Tops/Handle

940XX	2" Stanchion Ball Top	\$3.67 each	Case Weight: 1#
973XX	2.5" Stanchion Ball Top	\$5.75 each	Case Weight: 1#
950XX	3" Stanchion Ball Top	\$7.35 each	Case Weight: 1#
310XX	X-Treme Duty Handle (Compatible with the 3" pole only.)	\$7.65 each	Case Weight: N/A
<b>Solar Tops (fit 2.5" poles only):</b>			
90090	2.5" Solar Ball Top, Plastic (Glow Orange)	\$9.59 each	Case Weight: 1#
90089	2.5" Solar Ball Top, Crackle Glass	11.50 each	Case Weight: 1#

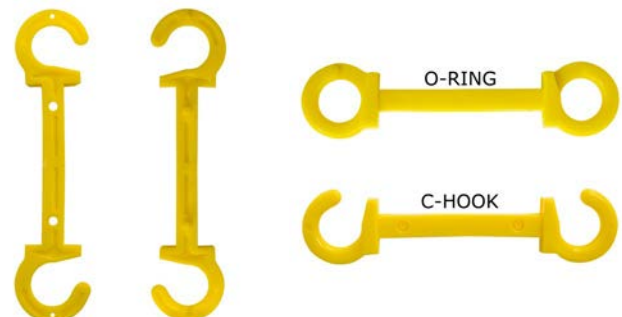
Color Code	Color	Color Code	Color
01	White	06	Blue
02	Yellow	12	Safety Orange
03	Black	14	Safety Green
05	Red		



## C-Hooks/O-Rings

905XX	2" C-Hook	\$1.40 each	Case Weight: 1#
905XX-10	2" C-Hook 10/Bag	\$14.02/bag	Case Weight: 1#
902XX	2.5" C-Hook	\$2.03 each	Case Weight: 1#
902XX-10	2.5" C-Hook 10/Bag	\$20.33/bag	Case Weight: 1#
986XX	3" C-Hook	\$2.49 each	Case Weight: 1#
986XX-10	3" C-Hook 10/Bag	\$24.93/bag	Case Weight: 1#

Color Code	Color	Color Code	Color
01	White	06	Blue
02	Yellow	12	Safety Orange
03	Black	14	Safety Green
05	Red		



## Sign Adapters

919XX	2" Stanchion Sign Adapter	\$4.61 each	Case Weight: 2#
927XX	2.5" Stanchion Sign Adapter	\$5.19 each	Case Weight: 2#
930XX	3" Stanchion Sign Adapter	\$5.76 each	Case Weight: 2#

Sign Adapters are 1.25" deep and hold signs up to 1/16" thick.

Color Code	Color	Color Code	Color
01	White	06	Blue
02	Yellow	12	Safety Orange
03	Black	14	Safety Green
05	Red		



## O-Rings

929XX	Small O-Ring (fits 2" and 2.5" poles)	\$0.72 each	Case Weight: 1#
929XX-10	Small O-Ring 10/Bag (fits 2" and 2.5" poles)	\$7.17/bag	Case Weight: 1#
929XX-25	Small O-Ring 25/Bag (fits 2" and 2.5" poles)	\$17.93/bag	Case Weight: 1#
939XX	Large O-Ring (fits 2.5" and 3" poles)	\$1.25 each	Case Weight: 1#
939XX-10	Large O-Ring 10/Bag (fits 2.5" and 3" poles)	\$12.52/bag	Case Weight: 1#
939XX-25	Large O-Ring 25/Bag (fits 2.5" and 3" poles)	\$31.30/bag	Case Weight: 2#

Use with Double Stranded Stanchion (page 12) or in place of c-hooks.

Color Code	Color	Color Code	Color
01	White	06	Blue
02	Yellow	12	Safety Orange
03	Black	14	Safety Green
05	Red		



## Extension Pieces

943XX	2" Extension Piece	\$2.26 each	Case Weight: 1#
910XX	2.5" Extension Piece	\$2.82 each	Case Weight: 1#
981XX	3" Extension Piece	\$3.38 each	Case Weight: 2#

Color Code	Color	Color Code	Color
01	White	06	Blue
02	Yellow	12	Safety Orange
03	Black	14	Safety Green
05	Red		



## 2" Ground Poles (27" Overall Height or 35" Overall Height)

912XX	2" Ground Pole (27" Overall Height)	\$7.05 each	Case Weight: 1#
912XX-24	2" Ground Pole (27" Overall Height)-24 Pack	\$169.20/Pack	Case Weight: 23#
537XX	2" Ground Pole Kit	\$29.15/Kit	Case Weight: 4#
Kit Includes: 3-27" poles, 3-ground stakes, 3-c-hooks and 1-8'10" pieces of 2" chain.			
913XX	2" Ground Pole (35" Overall Height)	\$8.34 each	Case Weight: 2#
913XX-24	2" Ground Pole (35" Overall Height)-24 Pack	\$200.16/Pack	Case Weight: 26#
2 Reflective Stripes add \$17.51 per pole. Safety label available, call for pricing. Chain Sold Separately. Perforated slots on the 2" and 2.5" poles allow chain to be hung with c-hooks or in one continuous length.			



## 2.5" Ground Poles

954XX	2.5" Ground Pole (35" Overall Height)	\$9.78 each	Case Weight: 2#
2 Reflective Stripes add \$18.75 per pole. Safety label available, call for pricing. Chain Sold Separately. Perforated slots on the 2" and 2.5" poles allow chain to be hung with c-hooks or in one continuous length.			

## 3" Ground Poles

955XX	3" Ground Pole (35" Overall Height)	\$11.70 each	Case Weight: 3#
2 Reflective Stripes add \$21.51 per pole. Chain Sold Separately. Safety label available, call for pricing. Chain Sold Separately. Must use C-hook.			

### Ground Pole

### Solid Color Code

01	White
02	Yellow
03	Black
05	Red
06	Blue
12	Safety Orange
14	Safety Green
19	Yellow pole, black top
21	Black pole, white top

Ground Pole options are listed to the right.

Reflective Stripe Code	Ground Pole Color	Safety Label Code	Ground Pole Color
46	White	69	White
49	Yellow	71	Yellow
50	Black	70	Black
51	Red	68	Red
42	Blue	65	Blue
78	Safety Orange	67	Safety Orange
77	Safety Green	44	Safety Green



94103	2" Ground Stake Piece	\$2.26 each	Case Weight: 1#
97103	2.5" Ground Stake Piece	\$2.70 each	Case Weight: 1#
95303	3" Ground Stake Piece	\$3.14 each	Case Weight: 2#
Available in Black only.			

## Ground Stakes

909XX	Solid Colonial Ground Pole	\$3.74 each	Case Weight: 1#
909XX-24	Solid Colonial Ground Pole-24 Pack	\$89.76/Pack	Case Weight: 20#

### Color Code Color

01	White
03	Black

## Solid Colonial Ground Poles



97802	9" Utility Peg	\$0.71 each	Case Weight: 1#
97802-4	9" Utility Peg-4 Pack	\$2.84/Pack	Case Weight: 4#
97902	12" Utility Peg	\$0.82 each	Case Weight: 1#
97902-4	12" Utility Peg-4 Pack	\$3.27/Pack	Case Weight: 4#

Available in Yellow only.



## Utility Pegs

## Policies

### Custom Orders

We can match any color, custom striping and/or custom decals. There is a custom chain length cutting charge of 10% when more than 10 cuts are required. Additional pole lengths available, please call 800-324-5861. **\*\$300.00 set up fee on all custom orders. Additional production time required. All custom orders are final sales and must meet minimum order requirement.**

### Returns, Refunds and Exchange Policies

Mr. Chain is dedicated to providing quality, dependable, products. If you are not completely satisfied with a product, please return the item using the guidelines below. May be subject to a restocking fee.

#### How To Return An Item

The item must be in its original, unused, condition to be returned and must be returned within 30 days of purchase. Please email support@mrchain.com to request a Return of Goods Authorization (RGA).

Be sure to include a statement specifying the reason for the return, along with the original Packing List.

All items are to be returned to: *M R Products, Inc.*  
*ATTN: RGA #*  
*16612 Russo Drive*  
*Copemish, MI 49625*

#### Restocking Fee

All items are subject to a restocking fee which can be up to 30% and will be deducted from your refund. The original shipping and handling charges are not refundable and return shipping is your responsibility.

#### Exchanges

If your item has not been used, it may be exchange for a different size and/or color. The restocking fee for an exchange is 10% and you are still responsible for all shipping charges. Generally, there are no exchanges after 90 days.

#### Turnaround

Most orders ship within 48 hours from receipt of your purchase order, Monday thru Friday, 8am to 4:00pm (EST).

#### Order Tracking

If a tracking number is provided by the shipping carrier it can be emailed to you, if requested. Please note, orders shipped using 1st Class USPS mail will not have tracking numbers.

#### Shipping Policy and Rates

The **online** rate charged for shipping and handling of orders is based on the dollar amount of your purchase. If you are going to ship outside of the United States, please call customer service at 800-324-5861 for a shipping quote. All shipping quotes are approximations.

#### Samples

If you would like a sample of our products, please contact customer service at 800-324-5861.



## Policies

### International Buyers - Please Note:

Import duties, taxes, and charges are **not included** in the item price or shipping cost. These charges are the buyer's responsibility. Please check with the Customs Office of your Country to determine what these additional charges will be prior to purchase.

### Back Orders

If an item is out of stock, we will contact you either by phone or email (if an email address has been provided) informing you that an item is out of stock. You can either cancel the item or we will ship it to you when it becomes available.

### Privacy Policy

This policy covers how we use your personal information. We take your privacy SERIOUSLY and will take all measures necessary to protect your personal information.

### What Information Do We Collect?

We only collect information that we need as it relates to your order. This includes:

- Billing Address
- Shipping Address
- Email Address
- Credit Card Information

In addition, we collect information on your IP address, browser type, and Refer URL data. This data is used to prevent hacking attempts, to ascertain what web browser is being used, and to find out the general location of visitors to our website, to assist us in improving our marketing.

### How Is My Information Used?

Your information is only used to fill your order. We DO NOT sell or redistribute your information to ANYONE.

### Security and Storage

Only your order data, billing, shipping, and order content is stored on our server. This information is encrypted using a Secure Sockets Layer before it is transmitted over a web server. **We DO NOT store your Credit Card information.**

## Tensile Testing

Chain Size	Tensile Strength	30 Day Load Bearing Test
1.5" Chain	140 lbs.	15 lbs.
2" Chain	199 lbs.	30 lbs.
2" Heavy Duty Chain	281 lbs.	50 lbs.
3" Chain	410 lbs.	75 lbs.

- M R Products, Inc./Mr. Chain performs in-house tensile testing on our chain. All testing is done to provide information on an approximate weight that the chain could possibly fail at during normal use. No testing is done in extreme conditions.
- Our chain should be used strictly for decorative or visual warning purposes. It is not intended for load bearing use.
- The tensile test weights indicated above expire three years from the manufactured date of the chain.

## Operating Philosophy

The operating philosophy of M R Products, Inc., trade name Mr. Chain, is to quickly and effectively meet our customers' needs with a dependable and economical product.

We strive to exceed our customers' expectations with continued dedication to innovation, creativity, quality service and integrity. This philosophy will be the cornerstone of a successful relationship with our customers.

## Mission Statement

To manufacture innovative, quality crowd control and safety products with a focus on integrity, customer service and respect for our employees, customers, suppliers, and the environment.

## Contact Us

We encourage you to explore our website - [www.mrchain.com](http://www.mrchain.com) - and learn more about our products, or contact us with questions at 800.324-5861.

## Chain

(actual color may vary)

### Standard Color Options



01-White



02-Yellow



03-Black



04-Green



05-Red



06-Blue



07-Khaki Gold



08-Silver



09-Gold



10-Brown



12-Safety Orange



13-Traffic Orange



14-Safety Green



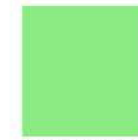
17-Fluorescent Orange\*



18-Magenta



19-Fluorescent Pink\*



22-Glo Green



23-Purple



53-Fluorescent Green\*



54-Evergreen



66-Cobalt Blue

### Bi-Color Options



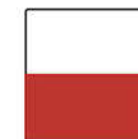
20-White/Black



29-Yellow/Black



30-Yellow/Magenta



35-Red/White



36-Red/Black



37-Yellow/Red

Replace the "XX" in the part number with your color selection.

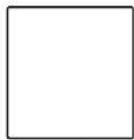
\*Fluorescent colors to be discontinued. Limited quantities available.



## Stanchions

(actual color may vary)

### Standard Color Options



01-White



02-Yellow



03-Black



05-Red



06-Blue



12-Safety Orange



14-Safety Green

Replace the "XX" in the part number with your color selection.

### Stripe Color Options

(actual color may vary)

Any color combination of stanchion and stripe is available. Price includes four stripes per stanchion.



White Stripe



Yellow Stripe



Black Stripe



Red Stripe



Blue Stripe



Orange Stripe

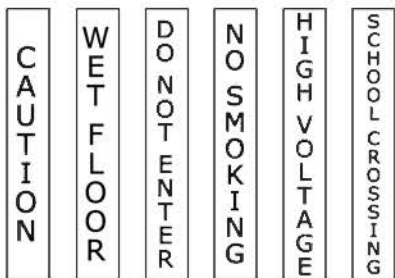


Green Stripe



Magenta Stripe

### Available Safety Labels



Custom labels are available.  
Please call for pricing.

Available Label Colors: White Red Black Clear  
Yellow Purple Brown Orange Green Blue

Available Ink Colors: Black Red White

**Family owned and operated since 1960!**

**Certified woman-owned business!**



 **Mr. Chain**™

16612 Russo Drive, Copemish, MI 49625

800.324.5861 support@mrchain.com

Quality, **American-Made** Products