

The LeWL Windlogger

INSTALLATION GUIDE

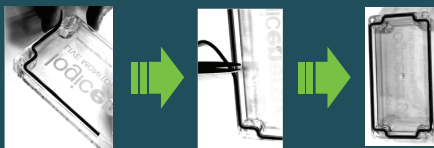
www.logicenergy.com

LeWL can be **wall** or **pole** mounted using the four holes provided on each corner of the box.

These are below the transparent lid.

SETUP

Installing seal



Please remember



- Ensure the logger is mounted with its gland facing down to avoid water leaks.
- Change batteries every 3 months.
- Always download your data on a monthly basis.
- Do not modify the LeWL Windlogger as this will void your warranty.
- Do not extend cables as this may affect the performance of the logger.

1- Connectors

2 Anemometer inputs and 1 wind vane input.



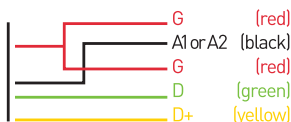
- G** : Common Ground
- A2** : Input anemometer 2
- G** : Common Ground
- A1** : Input anemometer 1
- G** : Common Ground
- D** : Input wind direction sensor
- D+** : Power wind direction sensor
- V+** : Positive power (red)
- G** : Common Ground (black)

Anemometers and Wind Vanes

The anemometers are connected to the LeWL by using one of the common grounds and an "A" input. A1 input is the default when using one anemometer.



Pro Anemometer



2- Settings

The LeWL wind logger can be setup via the SD card or serial port (refer to main manual for serial port setup).

Setup via SD card is done by editing the “setup.txt” file on the SD card supplied. To do this use the “leWL_setup” application on the SD card.



LeWL Setup via lewl_setup

On the SD card.



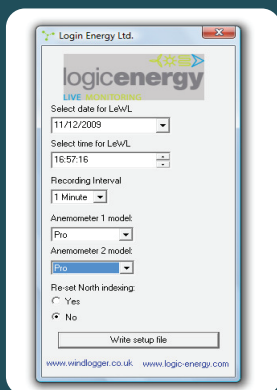
Open lewl_setup and select the parameters you wish to use:

Time & Date: These are set up automatically to your computer’s clock.

Recording Interval: Recommended to use 1 minute.

Anemometer 1&2 model: Pro as default, change if using any other compatible model.

When all the parameters are setup, click on “write setup file”.



The program will write these automatically to the SD card. Insert the SD card on the LeWL wind logger.

After new settings have been taken, you should see the green LED on the LeWL do 1 long flash then 3 shorter flashes before going into normal operation. This indicates new settings have been setup successfully.

3- Power



LeWL uses two C type alkaline batteries. Always use premium alkaline batteries as these provide the best battery life.

4- Operation



LeWL has a **green LED**

OFF: Normal operation mode

Quick Flashing: Card missing

Fix On: Logger is in setup mode

5- Getting the Data



To read the data from the memory card, use any computer SD card reader compatible adapter. After inserting the memory card into the adapter, a new drive should appear on your computer with all the files being logged in a CSV file.

www.logicenergy.com