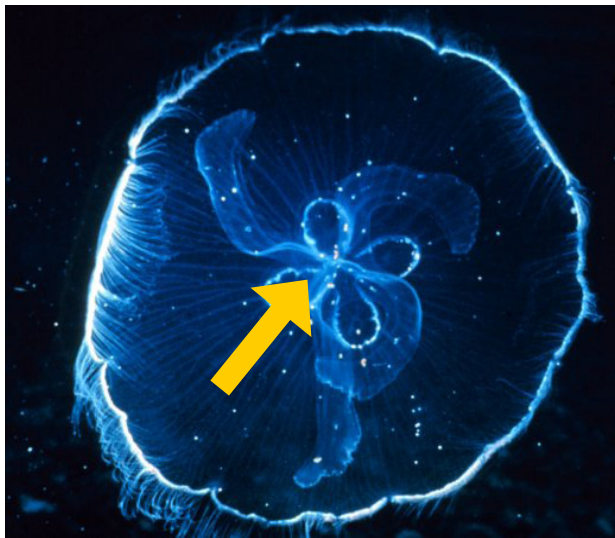




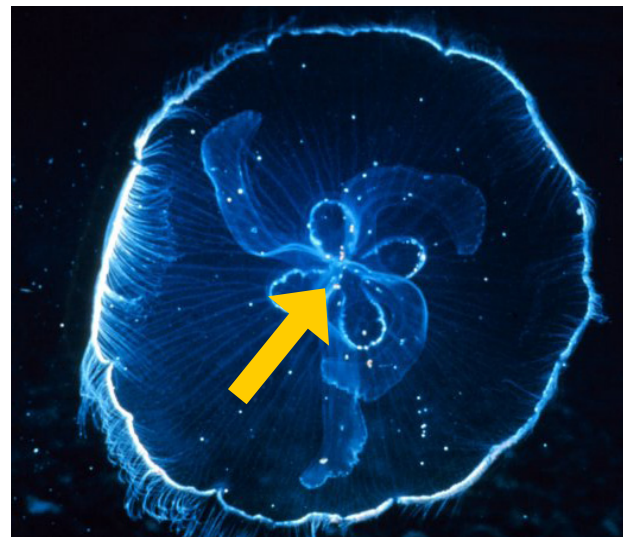
**jellyfish**



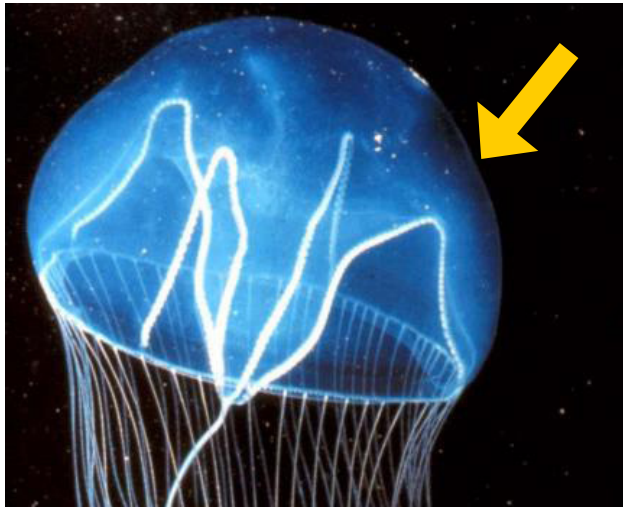
**jellyfish**



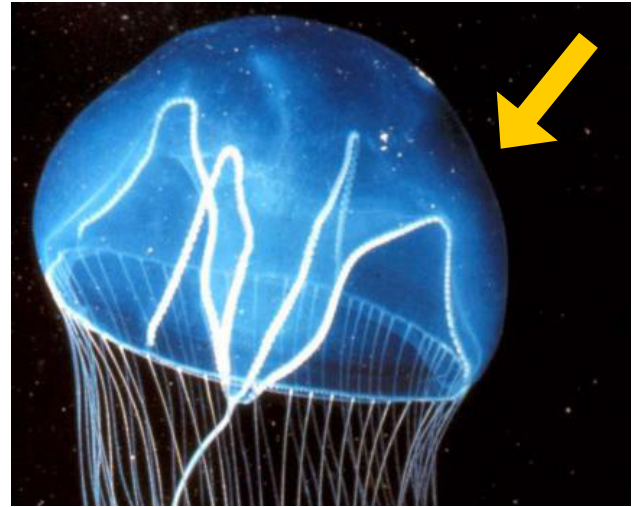
**mouth**



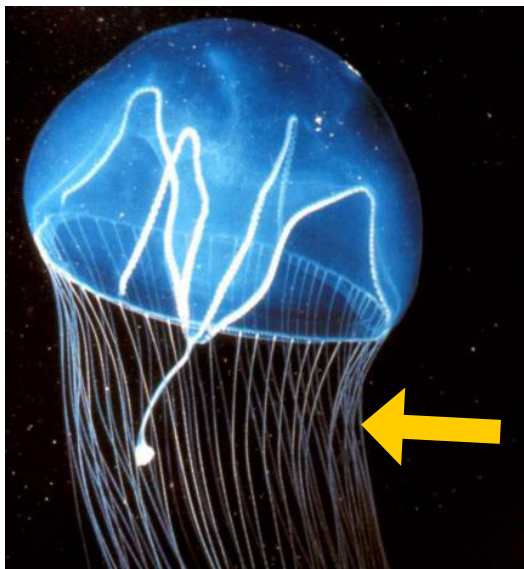
**mouth**



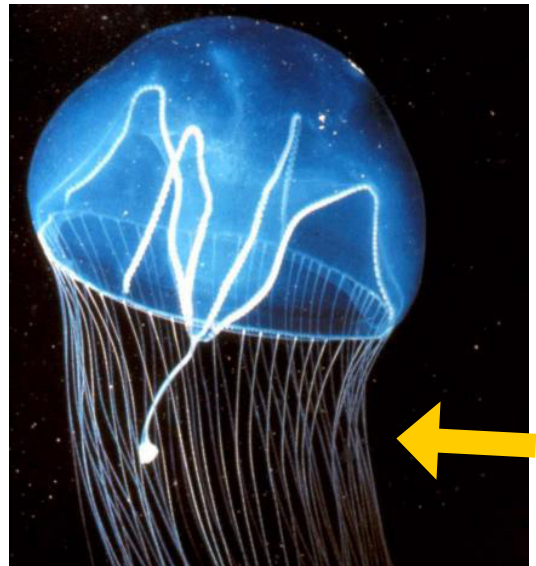
**hood**



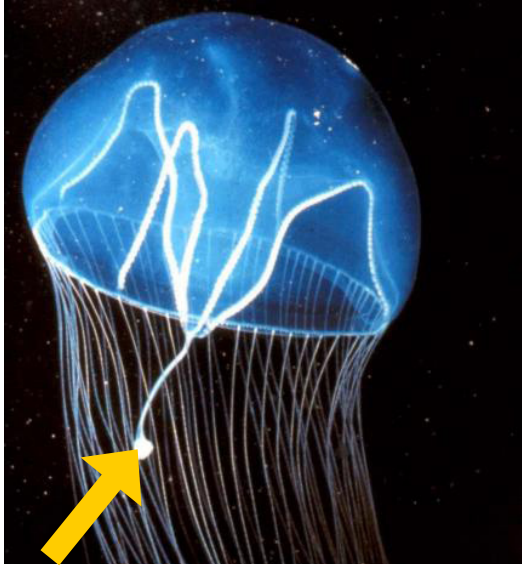
**hood**



**tentacles**

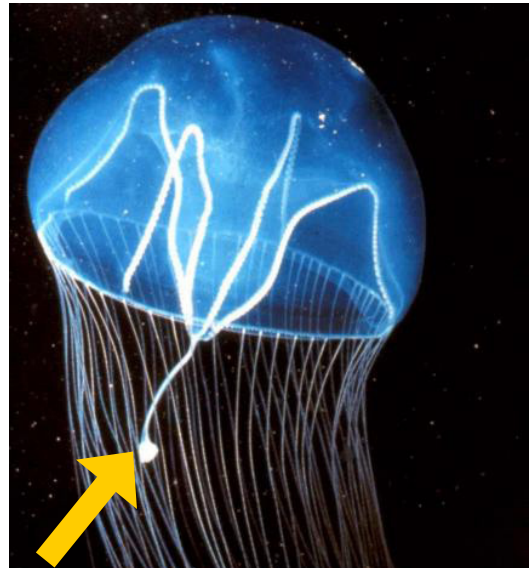


**tentacles**



**oral arms**

The \_\_\_\_\_  
are also called  
feeding arms.  
There are four to  
eight of them.  
They transport  
the food from the  
tentacles to the  
mouth.



**oral arms**

The oral arms  
are also called  
feeding arms.  
There are four to  
eight of them.  
They transport  
the food from the  
tentacles to the  
mouth.

A \_\_\_\_\_ is a cnidarian which floats in the sea. It can eat fish and is eaten by sea turtles. Some are very small and some large.

A jellyfish is a cnidarian which floats in the sea. It can eat fish and is eaten by sea turtles. Some are very small and some large.

The \_\_\_\_\_. is the center of the simple digestive cavity. It is the opening for food which is digested by the stomach.

The mouth is the center of the simple digestive cavity. It is the opening for food which is digested by the stomach.

The \_\_\_\_\_ is the umbrella shaped top of the jellyfish. It is also called a bell. It pumps up and down to help the jellyfish move in the water.

The hood is the umbrella shaped top of the jellyfish. It is also called a bell. It pumps up and down to help the jellyfish move in the water.

The \_\_\_\_\_ have stinging cells which help the jellyfish catch fish and other animals for food. They surround the mouth of the jellyfish.

The tentacles have stinging cells which help the jellyfish catch fish and other animals for food. They surround the mouth of the jellyfish.