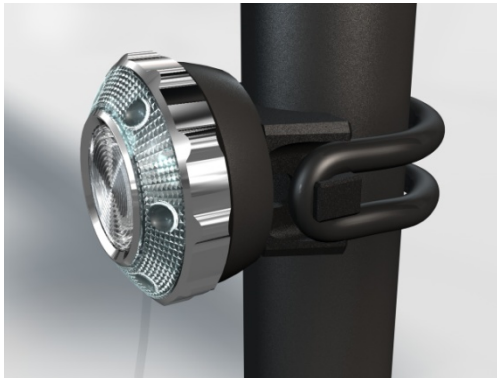


The MagicShine MJ-818 Tail Light

Use one of the included rubber rings to attach your tail light to your seat post or frame as shown.



Attach the cord to the battery or Y-Cable.

Turn the light on by rotating the outer silver ring

The light is activated by a magnetic switch in the housing. There are 4 magnets in the outer ring. When any of these magnets passes the switch, the light changes to the next mode. There are 3 modes and then off. A quarter turn in either direction will move one of the magnets past the switch and change modes.