

# lilitab **Head Unit**

*(lilitab Tether instructions at the end of this document)*

## Packing List and Assembly Instructions

v.1.0



# TABLE OF CONTENTS

## LILITAB HEAD UNIT PACKAGING AND ASSEMBLY INSTRUCTIONS

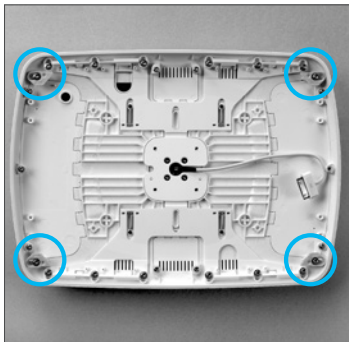
|  |   |
|--|---|
| lilitab Head Unit Assembly Instructions . . . . .        | 3 |
| Using the iPad Power Button Trigger and MagKey . . . . . | 4 |
| lilitab Tethering Instructions . . . . .                 | 5 |

# ASSEMBLY INSTRUCTIONS



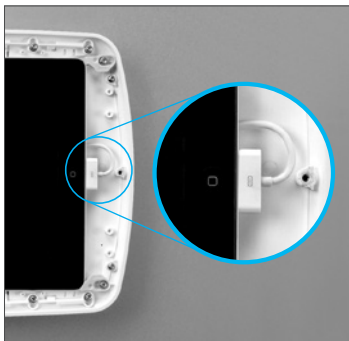
- 1. Open the lilitab head unit** by placing it facedown on a clean surface and squeezing the finger latches together as shown. Carefully lift up and the faceplate will come off, allowing access to the inside of the head unit.

**NOTE:** Pro unit shown.



- 2. Place the head unit onto a clean surface** with the inside of the enclosure facing up (the lilitab logo on the rear of the unit will face down and away from you). Slide all four of the green retaining clips towards the outside of the enclosure.

**NOTE:** The green keepers will not be present for the iPad Air, Google Nexus, Samsung Galaxy Tab 3 or Samsung Note. The faceplate's locating tabs will hold the tablet in place.



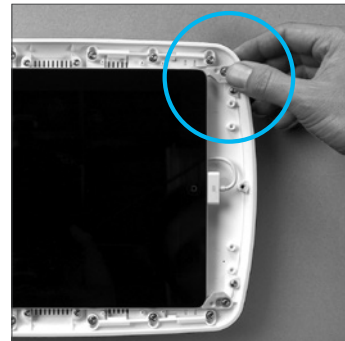
- 3. Plug the cable that came with your tablet into your tablet's charge port** and place it inside the enclosure face up (screen faces towards you).

**NOTE 1:** Pro head units come with a charge cable for your tablet

**NOTE 2:** If your tablet is a Samsung Galaxy Tab or Note see step 4 for alternate cable installation instructions.



- If you are installing your own charge cable for a Samsung device, use the cable routing clips as shown to ensure everything fits properly.



- 5. Slide all four green retaining clips** towards the center of the tablet ensuring they securely hold the tablet in place.

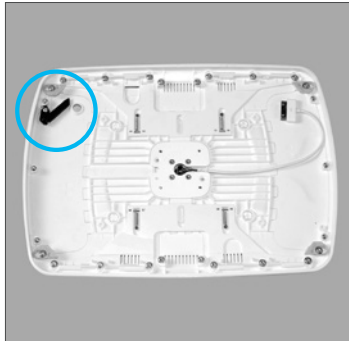
**NOTE:** You may need to adjust the position of the tablet slightly to allow all four clips to slide home properly.



- 6. Position the faceplate** over the tablet such that its openings are oriented as you wish (faceplates have different combinations of home button and camera openings). Gently press down around the edge of the faceplate and it will snap into place.

**NOTE:** If the faceplate does not snap into place evenly (or if one or more corners is lifting up) ensure that all four of the green retaining clips are seated fully home and your cable is routed properly.

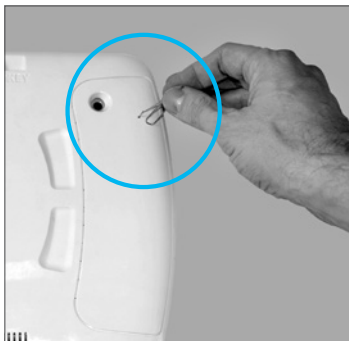
## USING THE IPAD POWER BUTTON TRIGGER



1. You can actuate the power button located on the edge of your iPad 2, 3, 4 using the black Power Button Trigger shown to the left.



**NOTE:** Here's an iPad installed in the correct orientation with the Power Button Trigger next to the iPad's power button.



2. Once installed you can actuate the Power Button Trigger via a paper clip inserted into the small opening on the rear below the camera opening.

## USING THE MAGKEY



1. You can use the included MagKey with an iPad 2,3 or 4 in your lilitab. The MagKey allows you to sleep the iPad without having any access to it. This ensures you (and your staff!) can turn your kiosk on and off at the end of the day without removing the iPad from the kiosk. You will always know when the iPad is sleeping because once inserted the MagKey pokes out the top of unit like a little flag.



2. To sleep your iPad simply insert your MagKey with the orange side facing front and the black side facing back.



3. Remove your MagKey and your lilitab will wake up, in exactly the same state it was in before it went to bed ;-)

**NOTE:** The MagKey is compatible with iPad 2, 3 and 4 or newer. It requires that the iPad Cover Lock/Unlock preference is turned on. You can find this in Settings→ General→ iPad Cover Lock/Unlock.

Replacement MagKeys can be ordered directly from the website: [www.lilitab.com](http://www.lilitab.com)

# LILITAB TETHERING INSTRUCTIONS



1. You will first need to install the charge cable that came with your tablet. Thread the cable through the rear of the head unit so that the USB or power adapter side exits the back.

**NOTE:** You should ensure you have the enough cable inside the head unit to reach your tablet's charging port.



2. It attaches to the back of the head unit using the four security screws provided. Once your lock plate is attached you can use your lilitab as a secure hand-held kiosk that prevents operator access to the tablet.

If you will be tethering your lilitab with a cable lock you can keep your tablet charged by passing the usb cable out through the slot in the Cable Lock Plate. We suggest zip tying to the cable lock (see below).



3. You can tether your lilitab to a surface using a laptop style cable lock installed into the rectangular opening on the back of the plate.

**NOTE:** To remove your tablet you will need to first remove the lock plate, the reverse of step 2 above.

### **Cleaning and caring for your lilitab.**

To keep your lilitab looking and working great we recommend using a lint-free cloth to gently wipe it down.

To remove and prevent fingerprints we recommend Brillianize.

DO NOT use window cleaner, ammonia-based cleaners or any type of scouring or abrasive cleaner.



### **QUESTIONS?**

We're here to help!

EMAIL: [support@lilitab.com](mailto:support@lilitab.com)

PHONE: (888) 705 0190