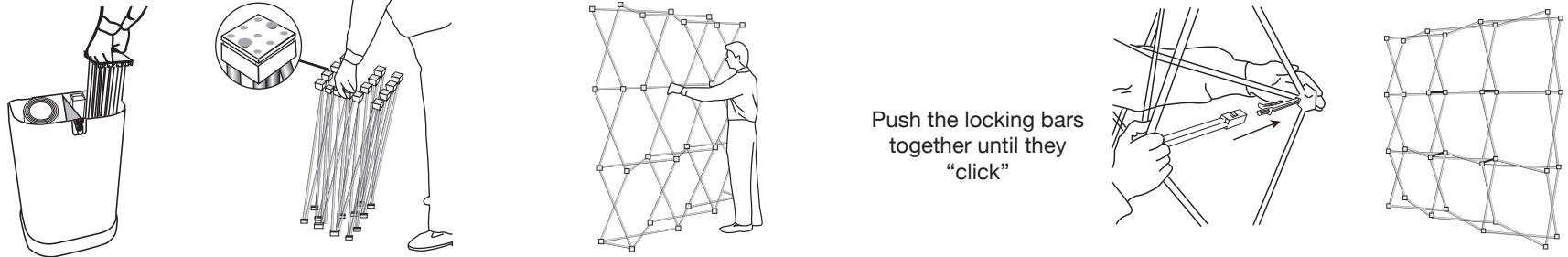


VERY Portable Graphic Display & Exhibition Stand Systems and Banner Stands

User Guide

1

Assemble Frame with blue hookstuds at the top

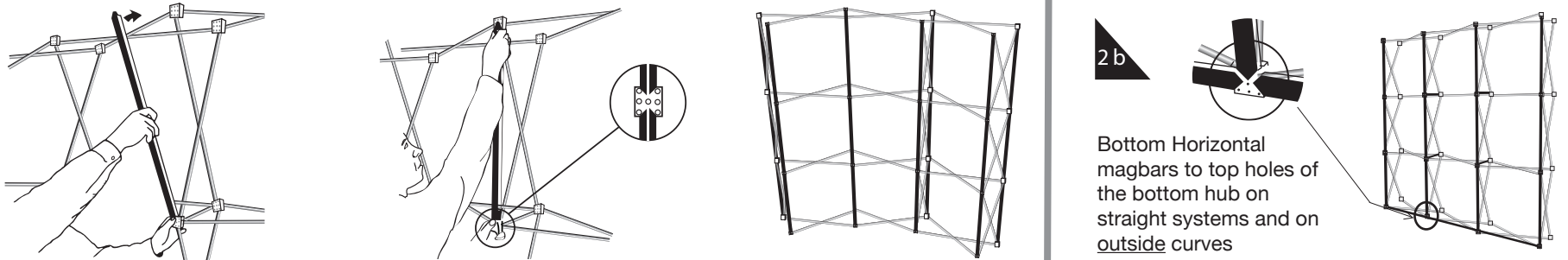


Push the locking bars together until they "click"

Push-fit so they "click" into locked position. (Twist gently to remove later)

2

Fit Magbars

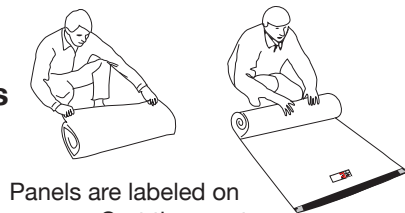


2 b

Bottom Horizontal magbars to top holes of the bottom hub on straight systems and on outside curves

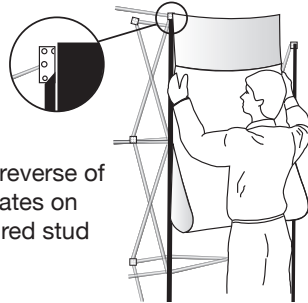
3

Panels

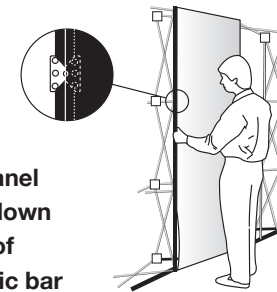


Panels are labeled on reverse. Sort them out at this point

Hook on reverse of panel locates on the coloured stud



Align panel edges down centre of magnetic bar

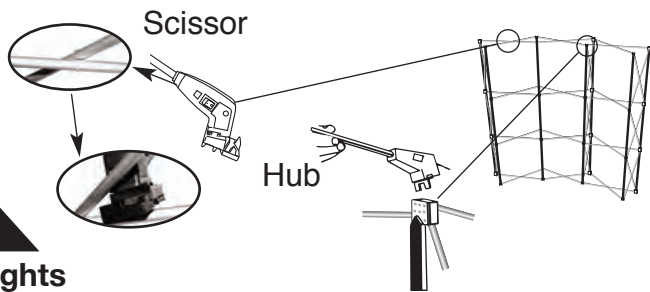


End panels curve from front to back



4

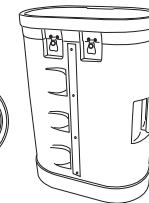
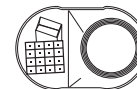
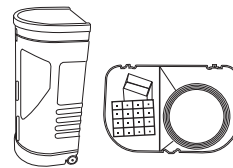
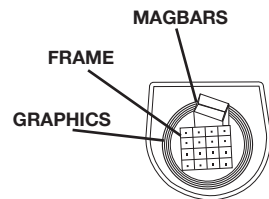
Lights



Scissor

Hub

EasyCases



EasyDrum™
for extra panels or small kit

PANEL PACKING IN EasyCase™

Roll 1 panel only graphics side out and place inside case. Once inside, unroll to touch the sides. Repeat with more panels. Reverse procedure to remove panels from case. Other components are stored in the remaining space available.