



# Little Buddy™ II Conveyor Dryer

18" wide by 5' long conveyor dryer  
Document # 16-437

## Assembly and Operating Instructions

Please review all of these instructions prior to assembly.

\*\*If you have ordered the optional heat control please see Fig 4.

The *Little Buddy* is packaged in 4-cartons for shipment. Optional heat controller and cap heater (if purchased) are shipped in their own cartons. Please make sure all pieces have been received before attempting assembly.

**Tools Required:** Two ½" wrenches & needle nose pliers

Label on Box	Qty	Contents
LB09-T	1	Take Up half of Conveyor Bed
	1	Chamber Floor
LB09-D-120, LB09-D-240 or LB09-D-CE	1	Drive half of Conveyor Bed, with motor
	1	Conveyor Belt, wrapped in brown paper
LB09-2000C or LB09-3000C	1	Assembly Instructions
	1	Heating Chamber
	1	6 inch Duct Collar
LB09-LK	4	Conveyor Leg
	2	Cross Member
	2	Caster, Locking 2 inch
	2	Caster, 2 inch
	36	Serrated 5/16 – 18 Nut
	32	Serrated 5/16 – 18 Bolt
	4	Caster Mounting Plate

**Note:** Portions of the assembly procedure require 2 people.

Unpack, identify, and inspect all parts. Report any missing or damaged items. Cover a 3' x 7' area on the floor with towels, cardboard, carpet, etc. to protect the painted parts from being scratched during assembly.

**Conveyor Bed Assembly:**

1. Place the Conveyor Drive Assembly on the covered floor with the motor breaker towards the ground (see Fig. 1)
2. Butt the Conveyor Take-Up Assembly to the Drive Assembly. Be sure that the groove on each roller drum is on the same side of the bed.
3. Bolt the bed assembly together using four 5/16-18 bolts & nuts.
4. Bolt one of the Cross Members between the bases of the Conveyor Leg and another Conveyor Leg using 5/16-18 bolts & nuts. Attach the Cross Member with the open channel facing toward the bottom of the conveyor leg (see Fig. 1).

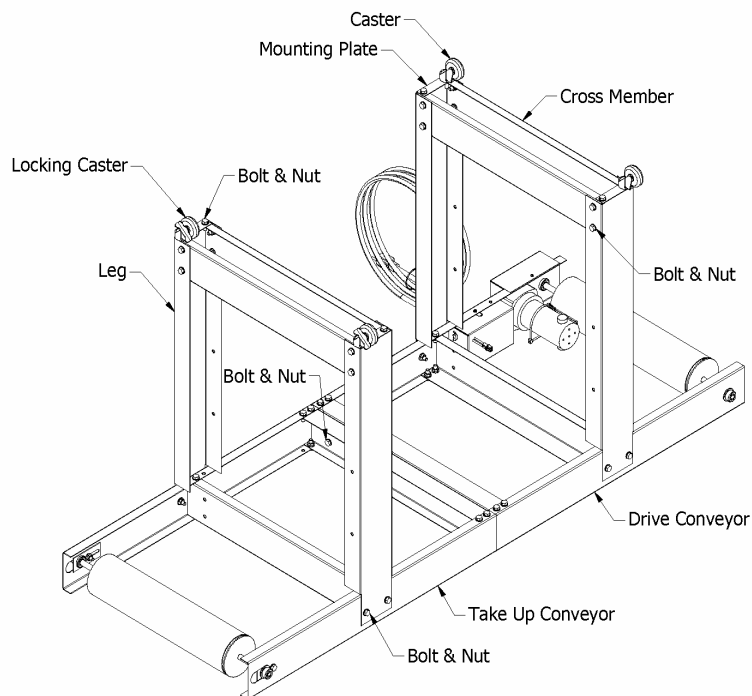


Figure 1

5. Bolt the remaining Cross Member to the two remaining Conveyor Legs in the same fashion.
6. Attach the Conveyor Leg Assemblies to the Conveyor Bed using the 5/16-18 Bolts.
7. Attach Mounting Plates & Casters with Bolts & Nuts.
8. **Using two people** turn conveyor bed over onto its casters.
9. Set Chamber Floor onto conveyor bed (see Fig. 2). The Chamber Floor is not fastened to the conveyor bed.

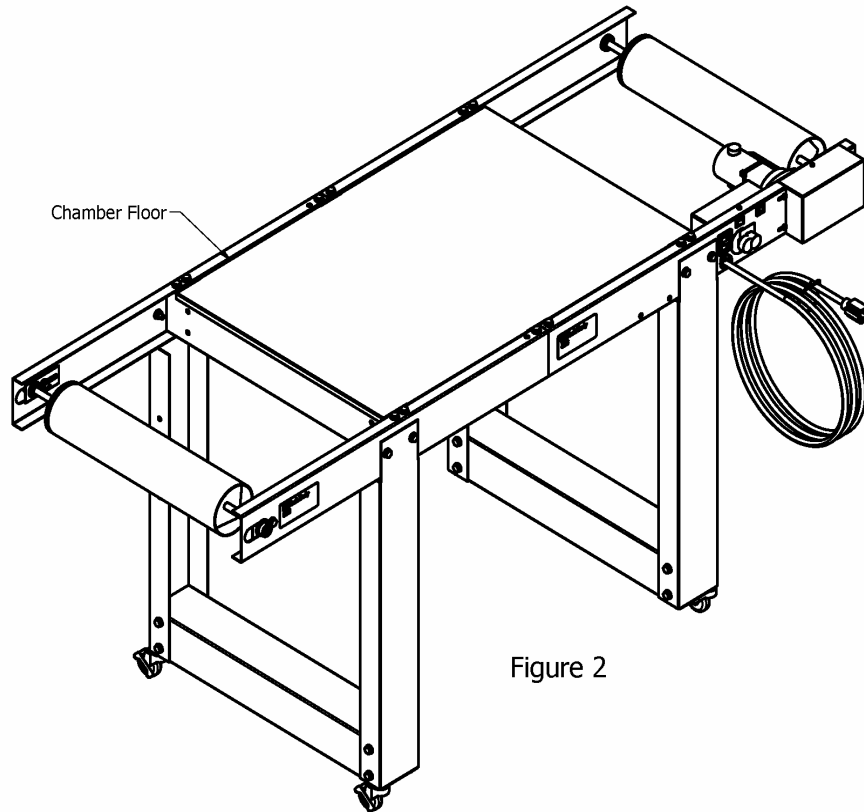
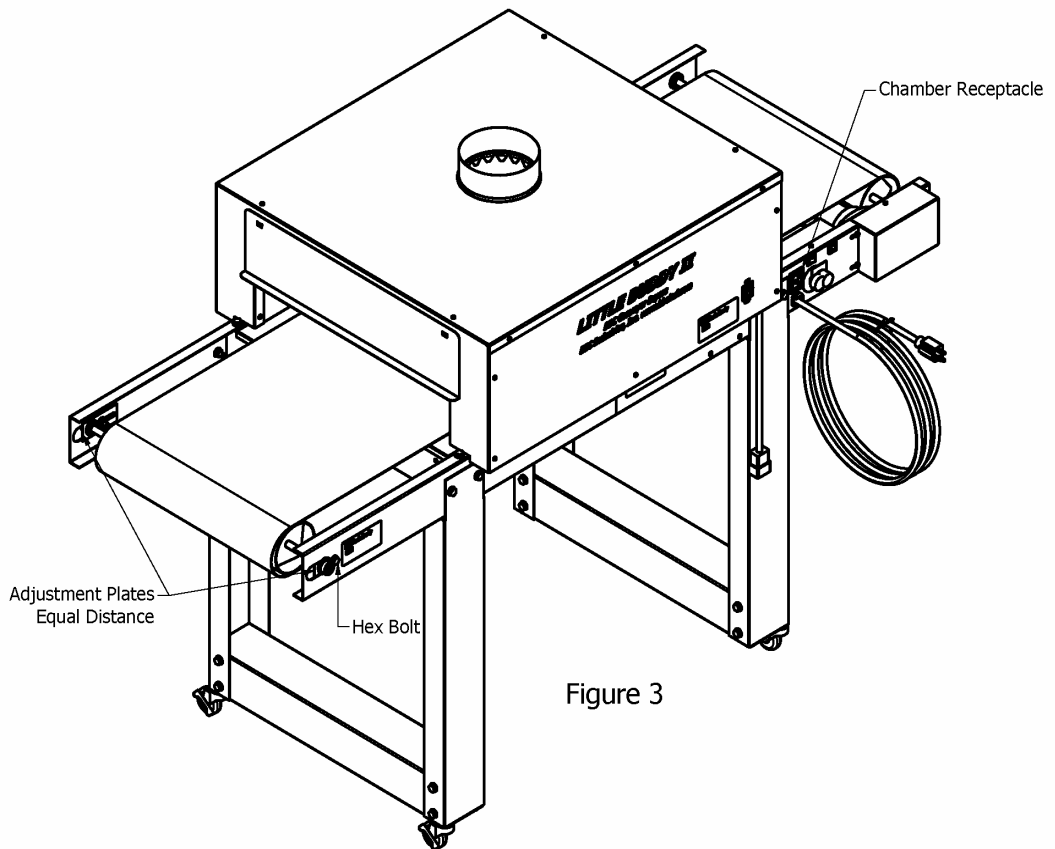


Figure 2

### Conveyor Belt Installation:

1. Determine the product side of the belt. A rubber guide is stitched onto one edge of the belt. This guide is designed to ride in the roller drum grooves to provide Hassle-Free-Tracking.
2. Carefully remove the splice pin from the inside teeth of the splice connector by pulling gently with needle nose pliers. DO NOT BEND; this pin will be reinserted later.
3. Lay the belt on the conveyor bed aligning the edge guide with the roller drum grooves.
4. Pull the ends of the belt together meshing the teeth of the splice while a **second person** reinserts the splice pin (removed earlier) into the channel formed by the interlocked metal teeth. It may be easier to rotate the belt so that the splice is on top of the conveyor bed before inserting pin. Using needle nose pliers, fully insert the pin until it is centered.
5. **Adjust belt tension:** Loosen 2 hex bolts at Take up Roller (See Fig 3). Pull roller at groove end till you have sag of 1 – 1.5 inches below the cross-members as the belt travels under the conveyor bed. Tighten hex bolt.

6. Adjust opposite end of roller to same location and tighten hex bolt.



#### Attaching Heating Chamber:

1. **Using two people** set the chamber onto the conveyor bed (see Fig. 3). The Heating Chamber cord must be on the same side of the Conveyor Bed as the Conveyor cord.
2. The Heating Chamber has openings on the underside rails that fit over the hex-head bolts. The chamber should rest flatly on the conveyor bed.
3. Insert the Duct Start Collar into the hole in the top of the Heating Chamber. Once in position, bend the tabs at the base of the collar outward to secure it in place. **Note:** The chamber will function properly with only the duct start collar installed. Installing a two to three foot section of 6" diameter ductwork on the start collar will improve the capture of heat and vapors created during the curing process. Optional exhaust kit (LB02-EX) available.
4. Plug the Heating Chamber cord into the receptacle on the Conveyor.

### **Recommended Initial Start-Up Procedure:**

1. **DO NOT** plug the equipment in (or apply power) until instructed to do so.

**Note:** The Little Buddy LB09-2000 requires a 120 Volt, 20 Amp circuit. The Little Buddy LB09-3000 & LB09-3000-CE requires a 240 Volt, 20 Amp circuit. Any attempt to operate the Little Buddy without the cord/plug provided by the manufacturer will void the warranty.

2. Turn the speed control knob on the side of the conveyor bed fully counterclockwise. Plug the conveyor drive into a suitable power source.
3. Turn knob to the halfway point. Flip rocker switch on conveyor to ON position to start belt. Listen for any unusual noises. Check to see if the rubber edge guide is riding in the roller drum grooves.
4. Flip the rocker switch on the chamber UP to the ON position. The amber indicator light will illuminate.

**Caution:** DO NOT operate Heating Chamber unless belt is moving. Heat will damage an idle belt.

5. Verify that the heating element is functioning: after about a minute of operation, briefly feel just inside both the entrance and exit ends of the chamber. The area should be warm.

**Caution:** Heating element is exposed inside the chamber and is operating at very high temperatures. Keep your hand close to the moving belt (without touching it).

**Note:** Some smoke/vapor and odor may be noticed during initial start-up due to residual material from the manufacturing process burning off the elements.

6. Working temperature will be reached after a ten-minute warm-up.

Test articles may be run to determine the optimal speed of the conveyor for your environment and products.

Belt speed can be determined by placing a small item that will not melt, like a coin, on the conveyor belt and recording the time it takes to travel through the chamber.

**Note:** The speed and temperature of the unit may vary slightly with fluctuations in power/voltage servicing the equipment.

Process an item through the dryer. Evaluate the completed article according to your quality standards. If the equipment is being used for curing of ink on garments, we recommend washing the processed garment as the definitive test.

The conveyor dryer is now ready for normal **Use and Operation**.

**Routine Maintenance:** Performed after first week and every 100 hours of operation.

1. The belt should be replaced if it has any tears, voids, separations, fraying, or no longer rides in the roller drum groove due to excessive wear.
2. Belt tension: the belt will relax over time and tension may have to be adjusted by the instructions above.

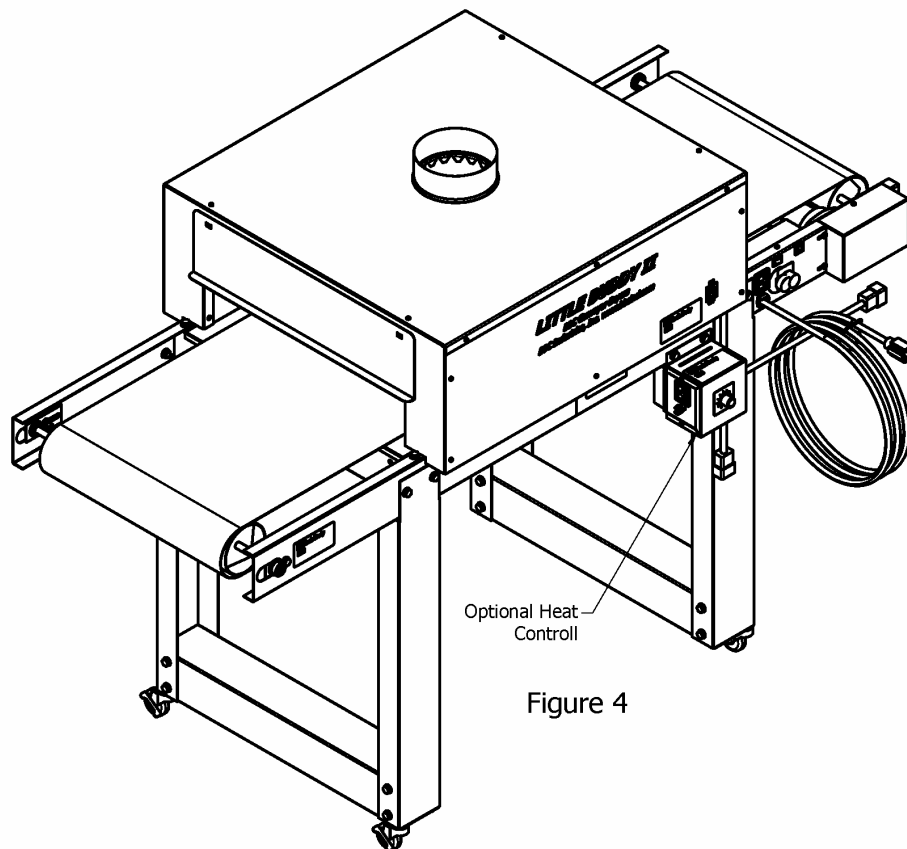


Figure 4

**Optional Heat Control Installation:**

1. Bolt Heat Control to Conveyor.
2. Plug Chamber cord into Controller.
3. Plug Controller cord into Conveyor.
4. Adjust Controller as needed for temperature.



# WARRANTY

---

BBC Industries, Inc. warrants their products to be free from defects in workmanship at the time of shipment.

The obligation under the above warranty shall be limited to the repair or replacement of any part or parts manufactured by BBC Industries, Inc. without charge F.O.B. factory that may prove defective within 12 months from the date of shipment, which are returned to BBC Industries, Inc.

The above warranties are the only warranties made with respect to the equipment. There is no implied warranty of merchantability or of fitness.

## EXCLUSIONS:

There is no warranty on parts not manufactured by BBC Industries, Inc., other than the respective manufacturer's warranty, if any.

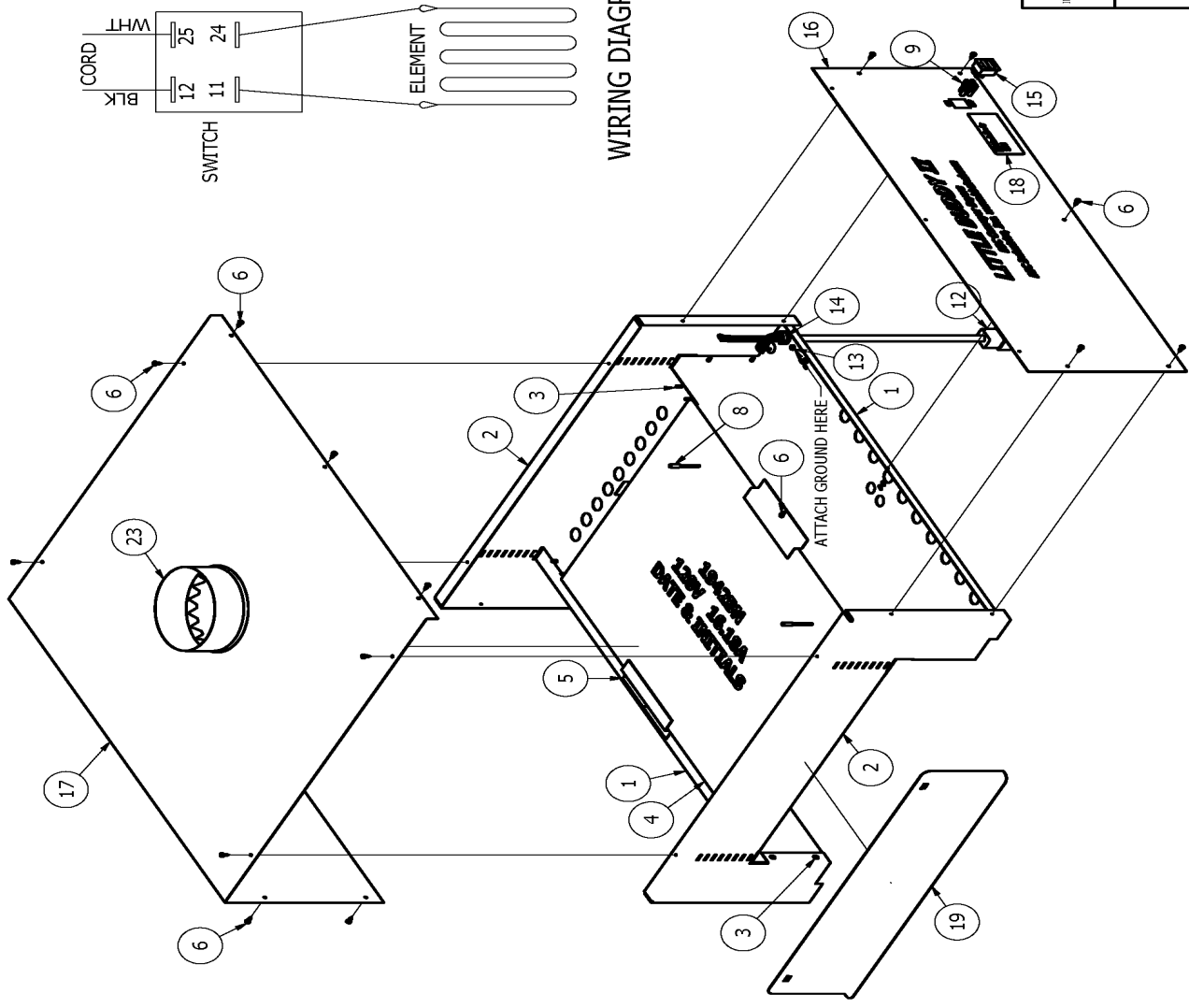
The warranty against defects shall not extend to damage caused from any of the following:

- Transport by carrier
- Corrosion
- Operation or use in a manner inconsistent with specifications and/or operating instructions
- Ordinary wear, accident, improper installation, or maintenance
- Alterations made to equipment in any way

BBC Industries, Inc. shall not be liable for any losses or damages, including but not limited to incidental or consequential damages, suffered or incurred because the equipment proves to be defective either upon installation or during its operation or use.

Shipment of defective parts to BBC Industries, Inc. and the return shipment of any repaired or replacement parts from BBC Industries, Inc. shall be the purchaser's/user's expense.

PARTS LIST			
ITEM	QTY	PART NUMBER	DESCRIPTION
1	2	LB09-001	INNER PANEL
2	2	LB09-004	CHAMBER END CAP
3	16	25-206	RIVET 5/32 52D
4	1	1942BN	ELEMENT 18x24 1941W
5	2	LB09-003	ELEMENT BRACKET
6	19	25-001	SCREW #6 x 3/8 PHSMS BO
7	3.5	90-312	12 GA MG1000
8	2	87-001	CRIMP, LARGE
9	4	87-204	YELLOW 1/4 FEMALE QC
10	10.3 SF	33-007	INSULATION DURABACK
11	.067#	43-008	3/8 BANDING
12	1	90-478	CORDSET 20" C-20
13	1	25-018	SCREW 8-32 x 3/8 TYPE F
14	1	22-074	STRAIN RELIEF 12/3 CORD
15	1	98-098	SWITCH AMBER 2600HA21E
16	1	LB09-005	SIDE PANEL
17	1	LB09-007	CHAMBER TOP
18	1	15-202	BLACK BODY LABEL
19	2	LB09-002	END SHIELD
20	8	PM-12	FOAM BAG 12"
21	1	BOX-LB02C	CHAMBER BOX
22	1	BOX-LB INSERT	INSERT
23	1	28-618	DUCT COLLAR 6"
24	1	16-437	LB09 MANUAL



- NOTES:
1. INSULATION: 2 @ 5.5 x 30  
2 @ 24 x 24
  2. WIRE: 1 @ 18"  
1 @ 24"
  3. BANDING: 1 @ 40"
  4. PACK DUCT COLLAR, DO NOT INSTALL
  5. INSTALL END SHIELDS & RETAIN WITH TAPE

PROPRIETARY DRAWING THE INFORMATION AND DESIGN ILLUSTRATED ON AND EMBODIED IN THIS DRAWING IS CONFIDENTIAL AND IS THE SOLE PROPERTY OF BBC INDUSTRIES	<b>Black Body</b> INDUSTRIAL OVENS SCREEN PRINT DRESS	<b>TITILE:</b> <b>CHAMBER</b>
	BBC INDUSTRIES INC. 5 CAPPER DRIVE PACIFIC NO 63069 USA 800-654-4205 WWW.BBCIND.COM	MATERIAL: N/A SCALE: 1:7 DATE: 9/21/09 PART NO: LB09-2000C REV:

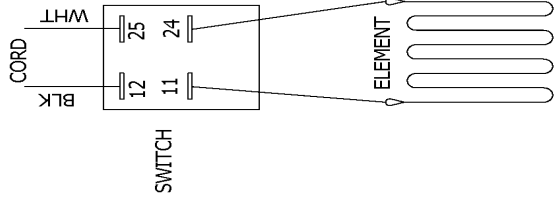


PARTS LIST			
ITEM	QTY	PART NUMBER	DESCRIPTION
1	2	LB09-001	INNER PANEL
2	2	LB09-004	CHAMBER END CAP
3	16	25-206	RIVET 5/32 5ZD
4	1	2992BN	ELEMENT
5	2	LB09-003	ELEMENT BRACKET
6	19	25-001	SCREW #6 x 3/8 PHSMS BO
7	3.5	90-312	12 GA MG1000
8	2	87-001	CRIMP, LARGE
9	2	87-204	YELLOW 1/4 FEMALE QC
10	10.3 SF	33-007	INSULATION DURABACK
11	.067#	43-008	3/8 BANDING
12	1	90-479	CORDSET 20" C-14
13	1	22-016	STRAIN RELIEF
14	1	25-018	SCREW 8-32 x 3/8 TYPE F
15	1	98-098	SWITCH AMBER 2600HA21E
16	1	LB09-005	SIDE PANEL
17	1	LB09-007	CHAMBER TOP
18	1	15-202	BLACK BODY LABEL
19	2	LB09-002	END SHIELD
20	8	PM-12	FOAM BAG 12"
21	1	BOX-LB02C	CHAMBER BOX
22	1	BOX-LB INSERT	INSERT
23	1	28-618	DUCT COLLAR 6"
24	1	16-437	LB09 MANUAL
25	2	87-200	TERMINAL BLUE 1/4 QC FEMALE

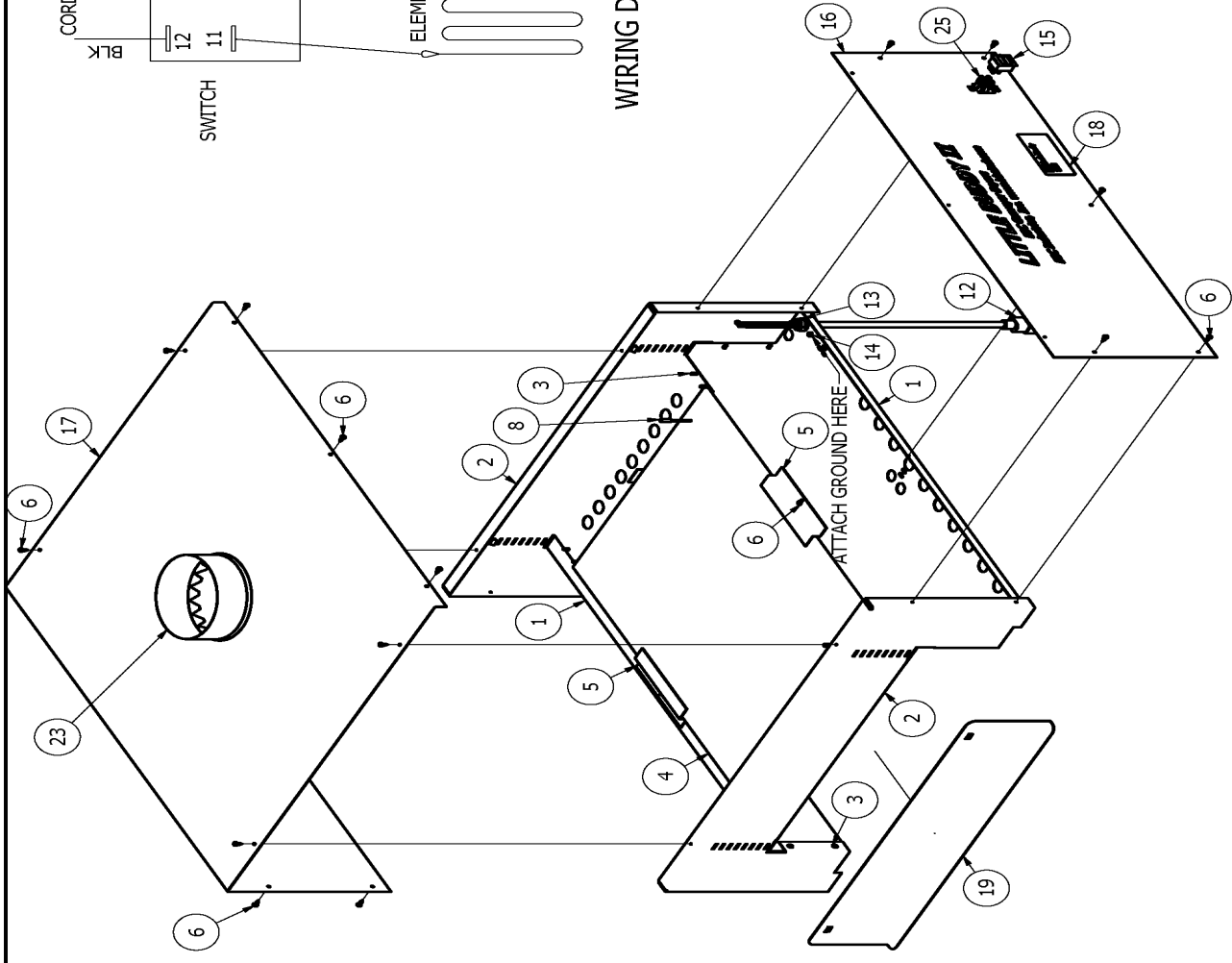
NOTES:

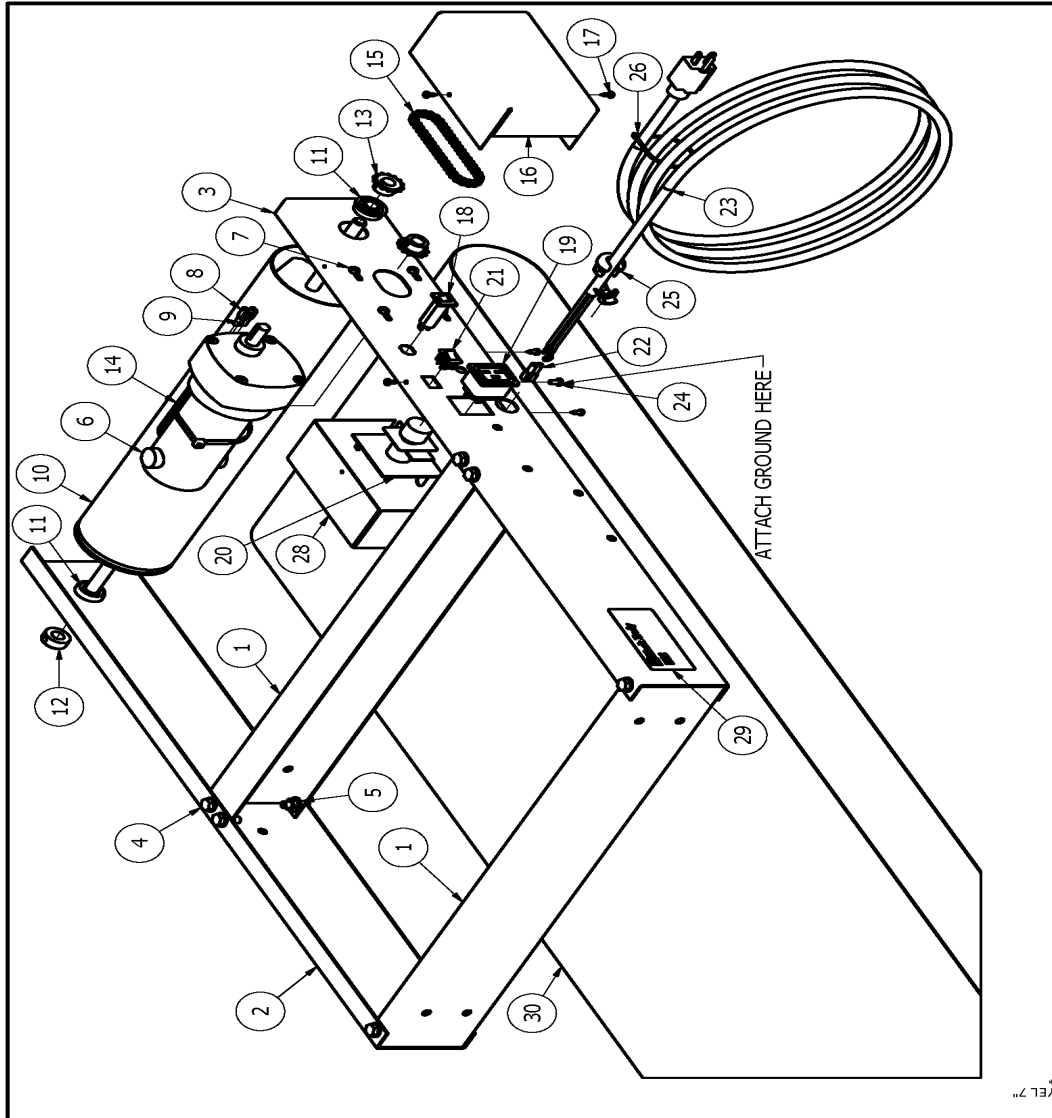
- INSULATION: 2 @ 5.5 x 30  
2 @ 24 x 24
- WIRE: 1 @ 18"  
1 @ 24"
- BANDING: 1 @ 40"
- PACK DUCT COLLAR, DO NOT INSTALL
- INSTALL END SHIELDS & RETAIN WITH TAPE

<small>PROPRIETARY DRAWING THE INFORMATION AND DESIGN ILLUSTRATED ON IT IS CONFIDENTIAL AND IS THE PROPERTY OF BBC INDUSTRIES</small>	<b>Black Body</b> INDUSTRIAL OVENS SCREEN PRINT DRERS	TITLE: <b>CHAMBER</b>
	BBC INDUSTRIES, INC. 5 CAPPER DRIVE PACIFIC MD 63069 USA 800-654-4205 WWW.BBCIND.COM	MATERIAL: N/A SCALE: 1:1 DATE: 9/22/09 PART NO.: LB09-3000C

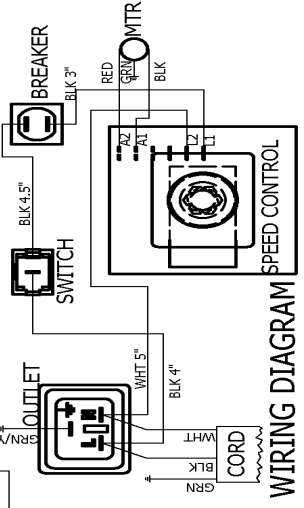


WIRING DIAGRAM





PARTS LIST	
ITEM QTY	PART NUMBER DESCRIPTION
1	2 LB09-008 CROSSMEMBER
2	1 LB09-014 SIDE RAIL
3	1 LB09-009 SIDE RAIL
4	12 25-025 BOLT 5/16-18 X3/4 SERRATED
5	12 24-012 NUT 5/16-18 SERRATED
6	1 08-252 MOTOR 011-190-0096
7	4 25-176 SCREW #10-32 x 1/2
8	2 87-203 TERMINAL 1/4 QC RED
9	1 87-205 #8 RING TERMINAL
10	1 LB09-006 CONVEYOR ROLLER
11	2 11-108 BEARING 6384K361
12	1 97-100 COLLAR 1/2 SC50Z
13	2 08-213 SPROCKET 25B14 .5 BORE KEY SETSCREW
14	1 16-301 CABLE TIE 14.5" L PLT4S
15	1 18-265 #25 CHAIN 41 LINKS W/MASTER
16	1 LB09-011 CHAIN COVER
17	5 25-001 SCREW #6 x 3/8 PHSMS BO
18	1 73-280 BREAKER 1/2 A
19	1 60-031 POWER OUTLET 57/103
20	1 09-006 SPEED CONTROL PN482
21	1 98-093 Switch - SPST, 10A/120V, 6A/250V
22	2 87-204 YELLOW 1/4 FEMALE QC
23	1 90-471 CORDSET 12-3
24	1 25-018 SCREW 8-32 x 3/8 TYPE F
25	1 22-074 STRAIN RELIEF 12/3 CORD
26	1 16-300 CABLE TIE 8" L PLT2M
27	1 LB09-WK WIRE KIT
28	1 LB09-010 CONTROL COVER
29	1 15-202 BLACK BODY LABEL
30	1 LB09-300 BELT 18" W x 133.375" L w/ guide
31	7 PM-12 Foam Packing Peanuts 12" Size
32	1 BOX-LB1860 CARTON

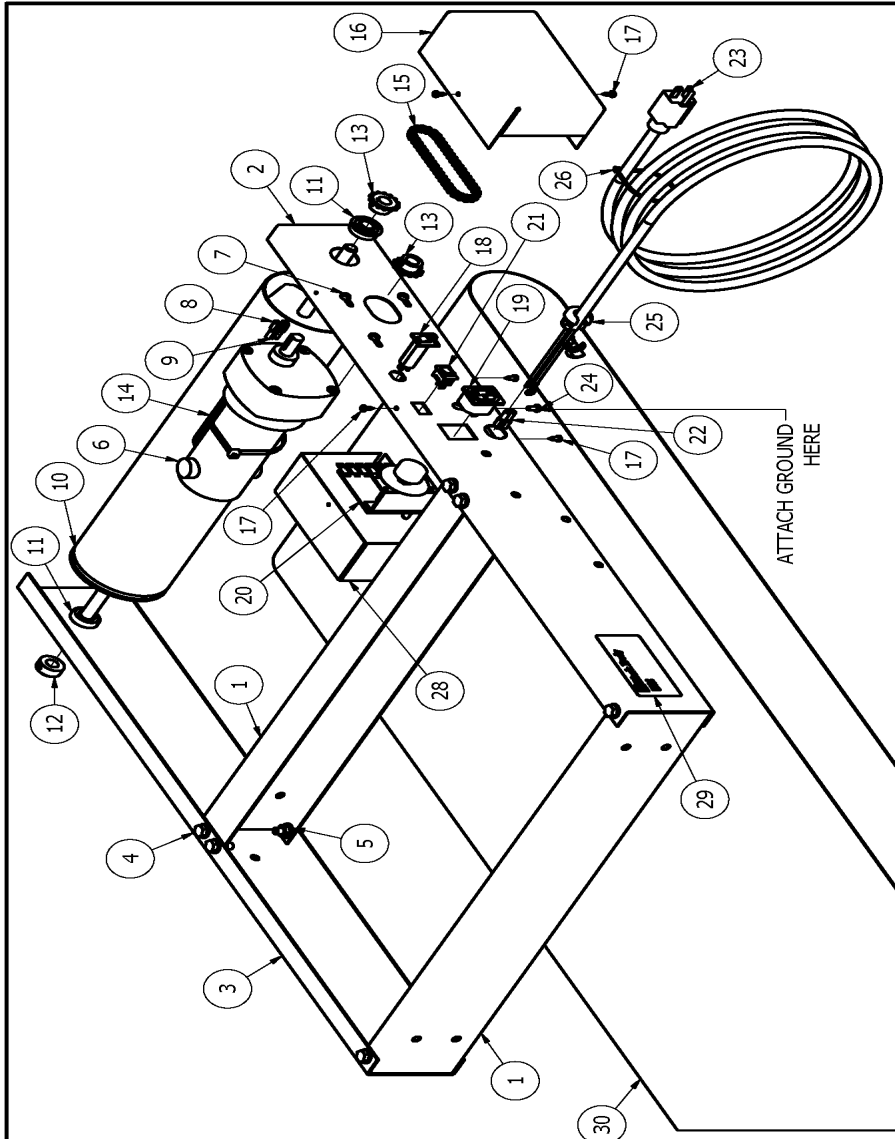


**NOTES:**

1. SECURE MOTOR LEADS TO MOTOR WITH CABLE TIE
2. PART #LB09-300 (BELT) NOT INSTALLED, SHIPPED INSIDE DRIVE BED
3. SPEED CONTROL TRIM POT SETTINGS:  
IR COMP: MIDPOINT OF RANGE  
MIN SPD: 7-10 VDC  
MAX SPD: 88-92 VDC  
4. INPUT VOLTAGE 120 VAC

<b>Black Body</b> INDUSTRIAL OVENS SCREEN PRINT DEERS	<b>TITLE:</b> DRIVE CONVEYOR
	<b>SHEET:</b> OF 1
88C INDUSTRIES INC. 5 CAPPER DRIVE PACIFIC MO 63069 USA 800-654-4205 WWW.88CIND.COM	<b>MATERIAL:</b> N/A <b>SCALE:</b> 1:5 <b>DATE:</b> 9/22/09 <b>NAME:</b> JRW <b>REV:</b>
<small>           PROPRIETARY DRAWING            THE INFORMATION AND DESIGN            ILLUSTRATED ON AND RELATED            TO THIS DRAWING IS CONFIDENTIAL            AND NOT TO BE REPRODUCED            WITHOUT THE WRITTEN            PERMISSION OF 88C INDUSTRIES         </small>	<b>PART NO.:</b> LB09-D-120

**WIRING DIAGRAM**



PARTS LIST	
ITEM QTY	PART NUMBER DESCRIPTION
1	2 LB09-008 CROSSMEMBER
2	1 LB09-016 SIDE RAIL
3	1 LB09-014 SIDE RAIL
4	12 25-025 BOLT 5/16-18 X3/4 SERRATED
5	12 24-012 NUT 5/16-18 SERRATED
6	1 08-252 MOTOR 011-190-0096
7	4 25-176 SCREW #10-32 x 1/2
8	2 87-203 TERMINAL 1/4 QC RED
9	1 87-205 #8 RING TERMINAL
10	1 LB09-006 CONVEYOR ROLLER
11	2 11-108 BEARING 6384K361
12	1 97-100 COLLAR 1/2 SC50Z
13	2 08-213 SPROCKET 25B14 .5 BORE KEY SETSCREW
14	1 16-301 CABLE TIE 14.5" L PLT4S
15	1 18-265 #25 CHAIN 41 LINKS W/MASTER
16	1 LB09-011 CHAIN COVER
17	5 25-001 SCREW #6 x 3/8 PHSMS BO
18	1 73-280 BREAKER 1/2 A
19	1 60-004 POWER OUTLET 57320
20	1 09-006-1 Speed Control-120-240VAC I, 90-180VDC O
21	1 98-093 Switch - SPST, 10A/120V, 6A/250V
22	2 87-204 YELLOW 1/4 FEMALE QC
23	1 90-472 CORDSET 12-3 230V
24	1 25-018 SCREW 8-32 x 3/8 TYPE F
25	1 22-074 STRAIN RELIEF 12/3 CORD
26	1 16-300 CABLE TIE 8" L PLT2M
27	1 LB09-WK WIRE KIT
28	1 LB09-010 CONTROL COVER
29	1 15-202 BLACK BODY LABEL
30	1 LB09-300 BELT 18" W x 133.375" L w/ guide
31	8 PM-12 Foam Packing Peanuts 12" Size
32	1 BOX-LB1860 CARTON

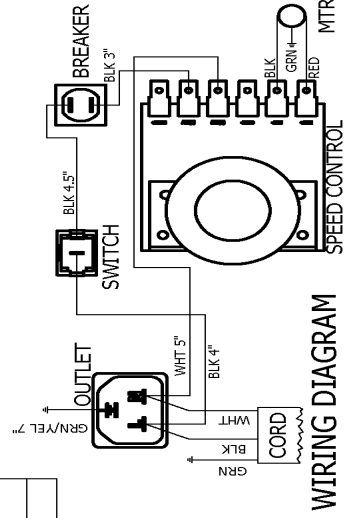
<b>TITLE:</b> <b>DRIVE CONVEYOR</b>	
<b>SHEET1</b> OF 1	
<b>MATERIAL:</b> N/A	<b>SCALE:</b> 1-5
<b>DATE:</b> 9/22/09	<b>NAME:</b> JRW
<b>PART NO.:</b> LB09-D-240	

<b>Black Body</b> INDUSTRIAL OVENS SCREEN PRINT DRESS	BBC INDUSTRIES INC. 3 CARPER DRIVE PACIFIC MO 63069 USA 800-694-4205 WWW.BBCIND.COM
---	--

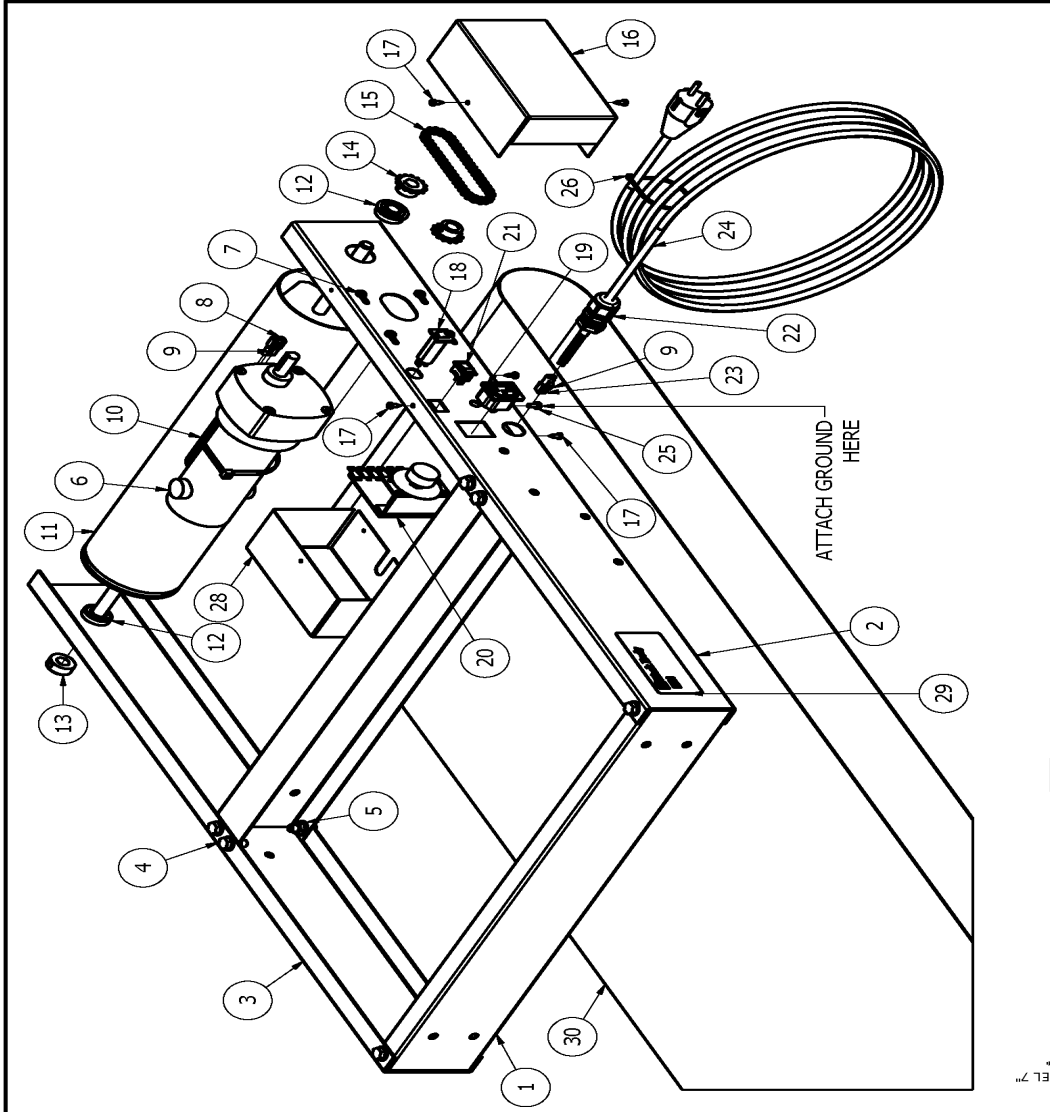
  

PROCEMETRY DRAWINGS THE INFORMATION AND DESIGN IN THIS DRAWING IS CONFIDENTIAL AND THE EXCLUSIVE PROPERTY OF BBC INDUSTRIES	TOLERANCES (UNLESS NOTED) FINISHED XXX±.02 XXX±.01 XXXX±.005 HOLED . . . . . J10 HOLE TO MAX. . . . . J6C ANGULAR . . . . . J5C
---	---

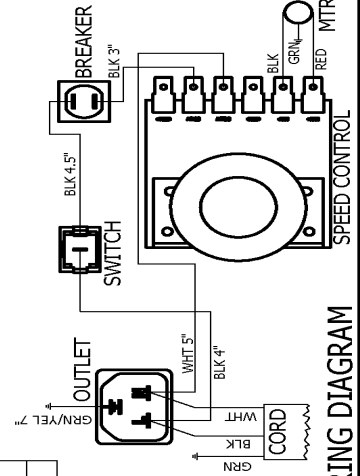


WIRING DIAGRAM

- NOTES:
1. SECURE MOTOR LEADS TO MOTOR WITH CABLE TIE
  2. PART #LB09-300 (BELT) NOT INSTALLED, SHIPPED INSIDE DRIVE BED
  3. SPEED CONTROL TRIM POT SETTINGS:  
IR COMP: MIDPOINT OF RANGE  
MIN SPD: 7-10 VDC  
MAX SPD: 88-92 VDC  
4. INPUT VOLTAGE 240 VAC



PARTS LIST			
ITEM QTY	PART NUMBER	DESCRIPTION	
1	2	LB09-008	CROSSMEMBER
2	1	LB09-016	SIDE RAIL
3	1	LB09-014	SIDE RAIL
4	12	25-025	BOLT 5/16-18 X3/4 SERRATED
5	12	24-012	NUT 5/16-18 SERRATED
6	1	08-252-1	GEARMOTOR
7	4	25-176	SCREW #10-32 x 1/2
8	2	87-203	TERMINAL 1/4 QC RED
9	2	87-205	#8 RING TERMINAL
10	1	16-301	CABLE TIE 14.5" L PLT#5
11	1	LB09-006	CONVEYOR ROLLER
12	2	11-108	BEARING 6384K361
13	1	97-100	COLLAR 1/2 SC50Z
14	2	08-213	SPROCKET 25B14 .5 BORE KEY SETSCREW
15	1	18-265	#25 CHAIN 41 LINKS W/MASTER
16	1	LB09-011	CHAIN COVER
17	5	25-001	SCREW #6 x 3/8 PHSMS BO
18	1	73-280	BREAKER 1/2 A
19	1	60-004	POWER OUTLET 57320
20	1	09-006-1	Speed Control-120-240VAC I, 90-180VDC O
21	1	98-093	Switch - SPST, 10A/120V, 6A/250V
22	1	22-072	CORD GRIP 69915K54
23	2	87-200	TERMINAL BLUE 1/4 QC FEMALE
24	1	90-488	CORDSET EU1-16P 8'
25	1	25-018	SCREW 8-32 x 3/8 TYPE F
26	1	16-300	CABLE TIE 8" L PLT2M
27	1	LB09-WK	WIRE KIT
28	1	LB09-010	CONTROL COVER
29	1	15-202	BLACK BODY LABEL
30	1	LB09-300	BELT 18" W x 133.375" L w/ guide
31	8	PM-12	Foam Packing Peanuts 12" Size
32	1	BOX-LB1860	CARTON



WIRING DIAGRAM

	<b>Black Body</b> INDUSTRIAL OVENS SCREEN PRINT DEERS	TITLE: <b>DRIVE CONVEYOR</b>
	SHEET1 OF 1	PARTIAL: N/A
BCC INDUSTRIES INC. 5 CAPPER DRIVE PACIFIC MO 63069 USA 800-654-4205 WWW.BCCIND.COM	SCALE: 1:5 DATE: 10/20/09 PART NO: LB09-D-CE	NAME: JRW REV:
PROPRIETARY DRAWING THE INFORMATION AND DESIGN ILLUSTRATED ON AND DESCRIBED IN THIS DRAWING IS CONFIDENTIAL AND NOT TO BE REPRODUCED WITHOUT THE WRITTEN PERMISSION OF BCC INDUSTRIES	TOLERANCES (UNLESS SPECIFIED) FINISHED XXX±.00 XXX±.01 XXX±.005 WELDED _____ .1/16 FRACTIONAL _____ 1/32 ANGULAR _____ 1 DEG	

- NOTES:
1. SECURE MOTOR LEADS TO MOTOR WITH CABLE TIE
  2. PART #LB09-300 (BELT) NOT INSTALLED, SHIPPED INSIDE DRIVE BED
  3. SPEED CONTROL TRIM POT SETTINGS:  
IR COMP: MIDPOINT OF RANGE  
MIN SPD: 7-10 VDC  
MAX SPD: 88-92 VDC  
4. INPUT VOLTAGE 240 VAC

PARTS LIST			
ITEM	QTY	PART NUMBER	DESCRIPTION
1	2	LB09-008	CROSSMEMBER
2	2	LB09-012	SIDE RAIL
3	14	25-025	BOLT 5/16-18 X3/4 SERRATED
4	14	24-012	NUT 5/16-18 SERRATED
5	2	LB09-015	ADJUSTMENT PLATE
6	1	LB09-006	CONVEYOR ROLLER
7	2	11-108	BEARING 6384K361
8	2	97-100	COLLAR 1/2 SC50Z
9	1	LB09-013	Chamber Floor
10	8	PM-12	Foam Packing Peanuts 12" Size
11	1	BOX-LB1860	CARTON
12	1	15-202	BLACK BODY LABEL

**Black Body**  
INDUSTRIAL OVENS  
SCREEN PRINT DRIERS

BBC INDUSTRIES INC.  
5 CAPPER DRIVE  
PACIFIC MO 63069 USA  
800-654-4205 WWW.BBCTND.COM

PROPRIETARY DRAWING  
THE INFORMATION AND DESIGN  
ILLUSTRATED ON AND EMBODIED  
IN THIS DRAWING IS CONFIDENTIAL  
AND THE EXCLUSIVE PROPERTY  
OF BBC INDUSTRIES

TOLERANCES  
(UNLESS NOTED)  
MACHINED X.XX±.02  
X.XX±.01 X.XXX±.005  
WELDED .1/16  
FRACTIONAL .1/32  
ANGULAR .1 DEG

**TITLE:**  
**TAKE-UP CONVEYOR**

**SHEET 1** OF 1

MATERIAL: N/A

SCALE: 1:7 DATE: 9/21/09 NAME: JRW

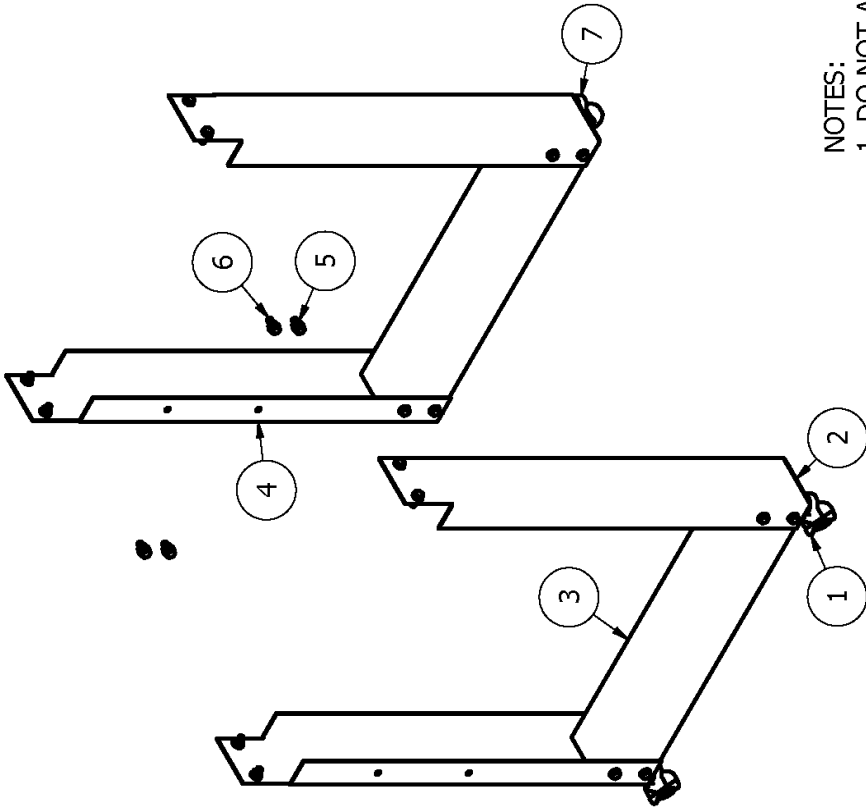
PART NO.: LB09-T REV

**NOTES:**  
1. PACK FLOOR WITH CONVEYOR, DO NOT INSTALL

PARTS LIST			
ITEM	QTY	PART NUMBER	DESCRIPTION
1	2	28-012	CASTER 2" LOCKING
2	4	LB09-017	CASTER MOUNTING PLATE
3	2	LB09-018	LEG CROSS
4	4	17-023	CONVEYOR LEG
5	36	24-012	NUT 5/16-18 SERRATED
6	32	25-025	BOLT 5/16-18 X3/4 SERRATED
7	2	28-012-1	CASTER 2"
8	1	BOX-BF97	CARTON 10 1/2 x 4 1/4 x 30 9/16
9	1	BOX-TZ	BOX 10x3x2
10	1	15-151	LABEL HARDWARE



**NOTES:**

1. DO NOT ASSEMBLE
2. WRAP PAINTED PARTS IN FOAM SHEETS & PACK

<p style="text-align: center;"><b>Black Body</b></p> <p style="text-align: center;">INDUSTRIAL OVENS SCREEN PRINT DRIERS</p> <p style="text-align: center;">BBC INDUSTRIES INC. 5 CAPPER DRIVE PACIFIC MO 63069 USA 800-654-4205 WWW.BBCIND.COM</p>	<p><b>TITLE:</b> <b>LEG KIT</b></p> <p><b>SHEET1</b> OF 1</p> <p><b>MATERIAL:</b> N/A</p> <p><b>SCALE:</b> 1:10</p> <p><b>DATE:</b> 9/21/09</p> <p><b>NAME:</b> JRW</p> <p><b>PART NO.:</b> LB09-LK</p>
<p>PROPRIETARY DRAWING THE INFORMATION AND DESIGN ILLUSTRATED ON AND EMBODIED IN THIS DRAWING IS CONFIDENTIAL AND THE EXCLUSIVE PROPERTY OF BBC INDUSTRIES</p>	<p><b>TOLERANCES</b> (UNLESS NOTED) MACHINED X.X±.02 X.XX±.01 X.XXX±.005 WELDED 1/16 FRACTIONAL 1/32 ANGULAR 1 DEG</p>