

TRANSAIR PRICE LIST 2012

PLEASE CALL 02392 851396 FOR MORE DETAILS



>> TRANSAIR ALUMINIUM PIPE

BLUE PIPE



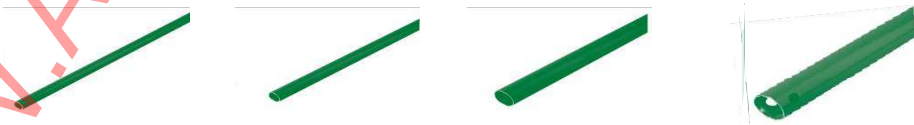
Transair®		Weight - grams	Pack Qty	£ each
1003A17 04 00	BLUE ALUMINIUM PIPE DIAM. 16,5 LENGTH : 3M	660	10	15.89
1004A17 04	BLUE ALUMINIUM PIPE DIAM 16,5 LENGTH : 4,5M	990	10	23.08
1003A25 04 00	BLUE ALUMINIUM PIPE DIAM. 25 LENGTH : 3M	1,040	6	20.63
1006A25 04 00	BLUE ALUMINIUM PIPE DIAM. 25 LENGTH : 6M	1,933	6	45.41
1003A40 04 00	BLUE ALUMINIUM PIPE DIAM. 40 LENGTH : 3M	1,480	6	31.03
1006A40 04 00	BLUE ALUMINIUM PIPE DIAM. 40 LENGTH : 6M	2,860	6	68.24
1003A63 04	BLUE ALUMINIUM PIPE DIAM. 63 LENGTH : 3M	3,140	4	50.48
1006A63 04	BLUE ALUMINIUM PIPE DIAM. 63 LENGTH: 6M	6,175	4	104.21
TA03 L1 04	BLUE ALUMINIUM PIPE DIAM. 76 LONG : 3M	3,720	2	89.54
TA06 L1 04	BLUE ALUMINIUM PIPE DIAM. 76 LONG : 6M	7,620	2	129.88
TA03 L3 04	BLUE ALUMINIUM PIPE DIAM. 100 LONG : 3M	5,840	2	116.57
TA06 L3 04	BLUE ALUMINIUM PIPE DIAM. 100 LONG : 6M	11,600	2	191.40

GREY PIPE



Transair®		Weight - grams	Pack Qty	£ each
1003A17 06 00	GREY ALUMINIUM PIPE DIAM. 16,5 LENGTH : 3M	660	10	15.89
1003A25 06 00	GREY ALUMINIUM PIPE DIAM. 25 LENGTH : 3M	1,040	6	20.63
1006A25 06 00	GREY ALUMINIUM PIPE DIAM. 25 LENGTH : 6M	1,933	6	45.41
1003A40 06 00	GREY ALUMINIUM PIPE DIAM. 40 LENGTH : 3M	1,480	6	31.03
1006A40 06 00	GREY ALUMINIUM PIPE DIAM. 40 LENGTH : 6M	2,860	6	68.24
1003A63 06	GREY ALUMINIUM PIPE DIAM. 63 LENGTH : 3M	3,140	4	50.48
1006A63 06	GREY ALUMINIUM PIPE DIAM. 63 LENGTH : 6M	6,175	4	104.21
TA06 L1 06	GREY ALUMINIUM PIPE DIAM. 76 LENGTH : 6M	7,620	2	129.88
TA06 L3 06	GREY ALUMINIUM PIPE DIAM. 100 LENGTH : 6M	11,600	2	191.40

GREEN PIPE



Transair®		Weight - grams	Pack Qty	£ each
1004A17 02	GREEN ALUMINIUM PIPE DIAM 16,5 LENGTH : 4,5M	990	10	23.08
1006A25 02 00	GREENALUMINIUM PIPE DIAM 25 LENGTH : 6M	1,933	6	45.41
1006A40 02 00	GREEN ALUMINIUM PIPE DIAM 40 LENGTH : 6M	2,860	6	68.24
1006A63 02	GREEN ALUMINIUM PIPE DIAM 63 LENGTH : 6M	6,175	4	104.21

STICKERS



Transair®		Weight - grams	Pack Qty	£ each
EW07 00 01	STICKER FOR COMPRESSED AIR NETWORKS	4	12	0.71
0000 01 68	STICKER FOR VACUUM NETWORKS	4	12	0.62

WWW.AIRLINKCOMPRESSORS.CO.UK
 TEL: 02392 851396

>> TRANSAIR FLEXIBLE HOSES

TRANSAIR FLEXIBLE HOSES FOR COMPRESSED AIR



Transair®		Weight - grams	Pack Qty	£ each
1001E25 00 01	FLEXIBLE HOSE DIAM. 25 LENGTH : 0,570M	794	1	53.47
1001E25 00 03	FLEXIBLE HOSE DIAM. 25 LENGTH : 1,500M	1,700	1	67.35
1001E25 00 04	FLEXIBLE HOSE DIAM. 25 LENGTH : 2,000M	2,080	1	75.83
1001E40 00 02	FLEXIBLE HOSE DIAM. 40 LENGTH : 1,150M	2,200	1	89.92
1001E40 00 04	FLEXIBLE HOSE DIAM. 40 LENGTH : 2,000M	3,380	1	109.45
1001E40 00 05	FLEXIBLE HOSE DIAM. 40 LENGTH: 3,000M	4,000	1	151.99
1001E63 00 08	FLEXIBLE HOSE DIAM. 63 LENGTH : 1,400M	3,675	1	203.14
1001E63 00 05	FLEXIBLE HOSE DIAM. 63 LENGTH : 3,000M	7,500	1	219.61
1001E63 00 06	FLEXIBLE HOSE DIAM. 63 LENGTH: 4,000M	11,000	1	257.54
FP01 L1 01	FLEXIBLE HOSE DIAM. 76 LONG : 1,500M	4,000	1	935.26
FP01 L1 02	FLEXIBLE HOSE DIAM. 76 LONG : 2,000M	8,800	1	964.55
FP01 L3 02	FLEXIBLE HOSE DIAM. 100 LONG : 2,000M	7,260	1	1480.54
FP01 L3 03	FLEXIBLE HOSE DIAM. 100 LONG : 3,000M	19,900	1	1573.58

TRANSAIR FLEXIBLE HOSES FOR VACUUM



Transair®		Weight - grams	Pack Qty	£ each
1001E25V00 01	FLEXIBLE HOSE DIAM. 25 LENGTH : 0,570M	685	1	76.47
1001E25V00 03	FLEXIBLE HOSE DIAM. 25 LENGTH : 1,500M	1,700	1	102.57
1001E25V00 04	FLEXIBLE HOSE DIAM. 25 LENGTH : 2,000M	2,080	1	107.95
1001E40V00 07	FLEXIBLE HOSE DIAM. 40 LENGTH : 0,950M	1,840	1	112.01
1001E40V00 04	FLEXIBLE HOSE DIAM. 40 LENGTH : 2,000M	3,380	1	148.25
1001E40V00 05	FLEXIBLE HOSE DIAM. 40 LENGTH : 3,000M	4,000	1	195.14
1001E63 00 08	FLEXIBLE HOSE DIAM. 63 LENGTH : 1,400M	3,675	1	203.14
1001E63V00 05	FLEXIBLE HOSE DIAM. 63 LENGTH : 3,000M	7,500	1	303.33
1001E63V00 06	FLEXIBLE HOSE DIAM. 63 LENGTH : 4,000M	11,000	1	331.45
FP01 L1 01	FLEXIBLE HOSE DIAM. 76 LONG : 1,500M	4,000	1	935.26
FP01 L1 02	FLEXIBLE HOSE DIAM. 76 LONG : 2,000M	8,800	1	964.55
FP01 L3 02	FLEXIBLE HOSE DIAM. 100 LONG : 2,000M	7,260	1	1480.54
FP01 L3 03	FLEXIBLE HOSE DIAM. 100 LONG : 3,000M	19,900	1	1573.58

ANTI-WHIPLASH STRAPS



Transair®		Weight - grams	Pack Qty	£ each
6698 99 03	ANTI WHIP-LASH STRAP	283	1	38.10

>> TRANSAIR PIPE-TO-PIPE & STUD CONNECTORS

PIPE-TO-PIPE CONNECTORS



Transair®		Weight - grams	Pack Qty	£ each
6606 17 00	PIPE-TO-PIPE CONNECTOR DIAM. 16,5	65	5	12.11
6606 25 00	PIPE-TO-PIPE CONNECTOR DIAM. 25	130	5	15.14
6606 25 00 50	PIPE-TO-PIPE CONNECTOR DIAM.25 (packQty 20 pces)	130	20	15.14
6606 40 00	PIPE-TO-PIPE CONNECTOR DIAM. 40	395	5	24.99
6606 40 00 50	PIPE-TO-PIPE CONNECTOR DIAM.40 (PackQty 25 pces)	395	25	24.99
6606 63 00	PIPE-TO-PIPE CONNECTOR DIAM. 63	860	8	34.88
RR01 L1 00	PIPE-TO-PIPE CONNECTOR (CLAMP & CARTRIDGE) DIAM. 76	1,033	8	28.69
RR01 L3 00	PIPE-TO-PIPE (CLAMP & CARTRIDGE) DIAM. 100	1,417	6	31.42

PIPE-TO-PIPE CONNECTOR WITH VENT



Transair®		Weight - grams	Pack Qty	£ each
6676 25 00	PIPE-TO-PIPE CONNECTOR WITH VENT DIAM. 25	145	5	16.65
6676 40 00	PIPE-TO-PIPE CONNECTOR WITH VENT DIAM. 40	412	5	29.50
6676 63 00	PIPE-TO-PIPE CONNECTOR WITH VENT DIAM. 63	870	3	40.26

90° ELBOW



Transair®		Weight - grams	Pack Qty	£ each
6602 17 00	90° ELBOW DIAM. 16,5	65	5	13.56
6602 25 00	90° ELBOW DIAM. 25	120	5	17.07
6602 25 00 50	90° ELBOW DIAM.25 (PackQty 20 pces)	120	20	17.07
6602 40 00	90° ELBOW DIAM. 40	410	5	28.33
6602 40 00 50	90° ELBOW DIAM. 40 (PackQty 25 pces)	410	25	28.33
6602 63 00	90° ELBOW DIAM. 63	970	4	39.84
RX02 L1 00	90° ELBOW DIAM. 76	1,033	1	52.47
RX02 L3 00	90° ELBOW DIAM. 100	1,417	1	85.59

45° ELBOW



Transair®		Weight - grams	Pack Qty	£ each
6612 25 00	45° ELBOW DIAM. 25	115	5	17.98
6612 40 00	45° ELBOW DIAM. 40	370	5	29.82
6612 63 00	45° ELBOW DIAM. 63	906	4	52.19
RX12 L1 00	45° ELBOW DIAM. 76	704	1	69.65
RX12 L3 00	45° ELBOW DIAM. 100	1,309	1	112.59

>> TRANSAIR PIPE-TO-PIPE & STUD CONNECTORS

EQUAL TEE



Transair®		Weight - grams	Pack Qty	£ each
6604 17 00	EQUAL TEE DIAM. 16,5	100	2	16.92
6604 25 00	EQUAL TEE DIAM. 25	185	2	22.73
6604 40 00	EQUAL TEE DIAM. 40	590	2	45.14
6604 63 00	EQUAL TEE DIAM. 63	1,435	2	63.71
RX04 L1 00	EQUAL TEE DIAM. 76	1,063	1	88.97
RX04 L3 00	EQUAL TEE DIAM. 100	1,787	1	114.11

REDUCING TEE



Transair®		Weight - grams	Pack Qty	£ each
6604 63 40	REDUCING TEE DIAM. 63 > DIAM. 40	1,485	2	58.72
RX24 L1 40	REDUCING TEE DIAM. 76 > DIAM. 40	1,020	1	70.71
RX24 L1 63	REDUCING TEE DIAM. 76 > DIAM. 63	1,091	1	90.27
RX24 L3 40	REDUCING TEE DIAM. 100 > DIAM. 40	1,586	1	89.32
RX24 L3 63	REDUCING TEE DIAM. 100 > DIAM. 63	1,672	1	101.82
RX04 L3 L1	REDUCING TEE DIAM. 100 > DIAM. 76	1,637	1	107.43

THREADED TEE



Transair®		Weight - grams	Pack Qty	£ each
RX23 L1 04	THREADED TEE DIAM. 76 G1/2	892	1	73.98
RX23 L3 04	THREADED TEE DIAM. 100 G1/2	1,564	1	91.96

>> TRANSAIR PIPE-TO-PIPE & STUD CONNECTORS

MALE STUD FITTING, BSP TAPER



Transair®		Weight - grams	Pack Qty	£ each
6605 17 13	MALE TAPER STUD FITTING, DIAM. 16,5 R1/4	100	1	12.33
6605 17 21	MALE TAPER STUD FITTING, DIAM. 16,5 R1/2	110	1	15.19
6605 25 21	MALE TAPER STUD FITTING, DIAM. 25 R1/2	166	1	19.44
6605 25 27	MALE TAPER STUD FITTING, DIAM. 25 R3/4	176	1	20.25
6605 25 34	MALE TAPER STUD FITTING, DIAM. 25 R1"	230	1	20.73
6605 40 34	MALE TAPER STUD FITTING, DIAM. 40 R1"	585	1	31.99
6605 40 42	MALE TAPER STUD FITTING, DIAM. 40 R1"1/4	510	1	36.44
6605 40 49	MALE TAPER STUD FITTING, DIAM. 40 R1"1/2	625	1	37.87
6605 63 48	MALE TAPER STUD FITTING, DIAM. 63 R2"	1,095	1	52.37
6605 63 47	MALE TAPER STUD FITTING, DIAM. 63 R2"1/2	1,474	2	51.52

MALE THREADED 90° ELBOW, BSP TAPER



Transair®		Weight - grams	Pack Qty	£ each
6609 17 13	ELBOW 90° MALE STUD FITTIN D16,5 1/4"BSPT	104	1	28.35
6609 17 21	ELBOW 90° MALE STUD FITTIN D16,5 1/2"BSPT	133	1	31.47
6609 25 21	ELBOW 90° MALE STUD FITTIN D25 1/2"BSPT	223	2	39.86
6609 25 27	ELBOW 90° MALE STUD FITTIN D25 3/4"BSPT	238	2	40.74
6609 25 34	ELBOW 90° MALE STUD FITTIN D25 1"BSPT	295	2	41.82
6609 40 34	ELBOW 90° MALE STUD FITTIN D40 1"BSPT	684	1	66.66
6609 40 42	ELBOW 90° MALE STUD FITTIN D40 1"1/4BSPT	792	1	70.63
6609 40 49	ELBOW 90° MALE STUD FITTIN D40 1"1/2BSPT	816	1	72.11
6609 40 48	ELBOW 90° MALE STUD FITTIN D40 2"BSPT	900	1	73.20
6609 63 48	ELBOW 90° MALE STUD FITTIN D63 2"BSPT	1,452	1	115.55
6609 63 47	ELBOW 90° MALE STUD FITTIN D63 2"1/2BSPT	1,831	1	118.25

MALE THREADED 45° ELBOW, BSP TAPER



Transair®		Weight - grams	Pack Qty	£ each
6619 25 21	ELBOW 45° MALE STUD FITTIN D25 1/2"BSPT	212	2	40.95
6619 25 27	ELBOW 45° MALE STUD FITTIN D25 3/4"BSPT	227	2	41.81
6619 25 34	ELBOW 45° MALE STUD FITTIN D25 1"BSPT	285	2	42.89
6619 40 34	ELBOW 45° MALE STUD FITTIN D40 1"BSPT	645	1	68.45
6619 40 42	ELBOW 45° MALE STUD FITTIN D40 1"1/4BSPT	755	1	72.42
6619 40 49	ELBOW 45° MALE STUD FITTIN D40 1"1/2BSPT	780	1	73.90
6619 40 48	ELBOW 45° MALE STUD FITTIN D40 2"BSPT	860	1	74.99

MALE ADAPTOR, BSP TAPER



Transair®		Weight - grams	Pack Qty	£ each
6621 17 21	MALE TAPER ADAPTOR, DIAM. 16,5 R1/2	19	1	14.22
6621 25 21	MALE TAPER ADAPTOR, DIAM. 25 R1/2	34	1	17.46
6621 25 27	MALE TAPER ADAPTOR, DIAM. 25 R3/4	36	1	18.23
6621 25 34	MALE TAPER ADAPTOR, DIAM. 25 R1"	58	1	21.88
6621 40 42	MALE TAPER ADAPTOR, DIAM. 40 R1"1/4	113	1	31.33
6621 40 49	MALE TAPER ADAPTOR, DIAM. 40 R1"1/2	148	1	32.51
RR05 L1 20	MALE THREADED ADAPTOR DIAM. 76 R2"1/2	1,968	1	130.66

>> TRANSAIR PIPE-TO-PIPE & STUD CONNECTORS

PLUG-IN REDUCER



Transair®		Weight - grams	Pack Qty	£ each
6666 17 25	PLUG-IN REDUCER DIAM. 25 > DIAM. 16,5	52	1	17.21
6666 25 40	PLUG-IN REDUCER DIAM. 40 > DIAM. 25	126	1	22.27
6666 40 63	PLUG-IN REDUCER DIAM. 63 > DIAM. 40	373	1	29.05
RX64 L1 63	PLUG-IN REDUCER DIAM. 76 > DIAM. 63	584	1	95.83
RX64 L3 63	PLUG-IN REDUCER DIAM. 100 > DIAM. 63	850	1	110.95
RX66 L3 L1	PLUG-IN REDUCER DIAM. 100 > DIAM. 76	702	1	106.67

END-CAP



Transair®		Weight - grams	Pack Qty	£ each
6625 17 00	VENTED END CAP DIAM. 16,5	145	1	15.24
6625 25 00	VENTED END CAP DIAM. 25	61	1	15.18
6625 40 00	VENTED END CAP DIAM. 40	180	1	20.44
6625 63 00	VENTED END CAP DIAM. 63	496	1	28.10
RX25 L1 00	END CAP DIAM. 76	346	1	51.26
RX25 L3 00	END CAP DIAM. 100	539	1	60.98

MANIFOLD



Transair®		Weight - grams	Pack Qty	£ each
6651 25 12 04	MANIFOLD DIAM. 25 WITH 4 DIAM. 12 mm PLUGS	1,045	1	61.34
6651 40 12 04	MANIFOLD DIAM. 40 WITH 4 DIAM. 12 mm PLUGS	2,285	1	114.14
6652 25 21 06	MANIFOLD TRANSAIR D25 6 OUTLETS FEMALE 1/2"BSPP	2300	1	141.26
6652 40 21 06	MANIFOLD TRANSAIR D40 6 OUTLETS FEMALE 1/2"BSPP	3800	1	205.09

FLANGE



Transair®		Weight - grams	Pack Qty	£ each
RX30 L1 00	FLANGE DIAM. 76 DN 65	1,940	1	146.03
RX30 L1 00 01	FLANGE DIAM. 76 DN 80	2,250	1	167.11
RX30 L3 00	FLANGE DIAM. 100 DN 100	2,680	1	191.39

FLANGE GASKET



Transair®		Weight - grams	Pack Qty	£ each
EW05 L1 00	FLANGE GASKET DIAM. 76 DN 65	28	1	2.27
EW05 L1 00 01	FLANGE GASKET DIAM. 76 DN 80	33	1	1.79
EW05 L3 00	FLANGE GASKET DIAM. 100 DN 100	52	1	3.36

FLANGE BOLT KIT



Transair®		Weight - grams	Pack Qty	£ each
EW06 00 01	FLANGE BOLT KIT Contains 8 Nuts + 8 Bolts	1,257	1	11.18

>> TRANSAIR QUICK ASSEMBLY BRACKETS

QUICK ASSEMBLY DIRECT FEED BRACKET



Transair®		Weight - grams	Pack Qty	£ each
RA69 25 17	QUICK ASSEMBLY DIRECT FEED BRACKET (NON RETENTION)	85	10	14.80
RA69 40 25	QUICK ASSEMBLY DIRECT FEED BRACKET DIAM. 40 > DIAM. 25	146	5	23.26
RR61 L1 08	QUICK ASSEMBLY DIRECT FEED BRACKET DIAM. 76 > DIAM. 25 WITH R1" ADA	2,002	1	66.55
RR61 L3 08	QUICK ASSEMBLY DIRECT FEED BRACKET DIAM. 100 > DIAM. 25 R1" ADAPTO	1,949	1	79.83

QUICK ASSEMBLY DIRECT FEED MINI-BRACKET



Transair®		Weight - grams	Pack Qty	£ each
RA65 25 04	DIRECT FEED MINI-BRACKET WITH FEMALE THREAD DIAM. 25 G1/2	172	10	16.39
RA65 40 04	DIRECT FEED MINI BRACKET WITH FEMALE THREAD DIAM. 40 G1/2	198	5	21.67

QUICK ASSEMBLY BRACKET



Transair®		Weight - grams	Pack Qty	£ each
6662 25 17	QUICK ASSEMBLY BRACKETS DIAM. 25 > DIAM. 16,5	109	10	17.29
6662 25 00	QUICK ASSEMBLY BRACKETS DIAM. 25 > DIAM. 25	124	5	21.22
6662 40 17	QUICK ASSEMBLY BRACKETS DIAM. 40 > DIAM. 16,5	138	10	22.35
6662 40 25	QUICK ASSEMBLY BRACKETS DIAM. 40 > DIAM. 25	145	10	27.23
6662 63 25	QUICK ASSEMBLY BRACKETS DIAM. 63 > DIAM. 25	330	5	35.13

QUICK ASSEMBLY MINI-BRACKET



Transair®		Weight - grams	Pack Qty	£ each
6661 25 21	QUICK ASSEMBLY MINI-BRACKET WITH FEMALE THREAD DIAM. 25 G1/2	186	10	18.17
6661 40 21	QUICK ASSEMBLY MINI-BRACKET WITH FEMALE THREAD DIAM. 40 G1/2	205	10	24.23
6661 40 27	QUICK ASSEMBLY MINI-BRACKET WITH FEMALE THREAD DIAM. 40 G3/4	289	10	27.18
6661 63 21	QUICK ASSEMBLY MINI-BRACKET WITH FEMALE THREAD DIAM. 63 G1/2	420	5	31.04
6661 63 27	QUICK ASSEMBLY MINI-BRACKET WITH FEMALE THREAD DIAM. 63 G 3/4	390	5	32.54

MINI-BRACKET WITH COUPLER



Transair®		Weight - grams	Pack Qty	£ each
6660 25 U1	MINI-BRACKET DIAM. 25 COUPLER ISO B 5,5 MM	302	5	32.92
6660 25 U2	MINI-BRACKET DIAM. 25 COUPLER ISO B 8 MM	334	5	36.64
6660 25 E4	MINI-BRACKET DIAM. 25 COUPLER EURO 7,2 MM	327	5	32.28
6660 25 A1	MINI-BRACKET DIAM. 25 COUPLER ARO 5,5 MM	344	5	33.82
6660 40 U1	MINI-BRACKET DIAM. 40 COUPLER ISO B 5,5 MM	332	5	44.46
6660 40 U2	MINI-BRACKET DIAM. 40 COUPLER ISO B 8 MM	357	5	43.34
6660 40 E4	MINI-BRACKET DIAM. 40 COUPLER EURO 7,2 MM	355	5	38.42
6660 40 A1	MINI-BRACKET DIAM. 40 COUPLER ARO 5,5 MM	358	5	38.86
6660 63 U1	MINI-BRACKET DIAM. 63 COUPLER ISO B 5,5 MM	581	3	46.27
6660 63 U2	MINI-BRACKET DIAM. 63 COUPLER ISO B 8 MM	560	3	50.60
6660 63 E4	MINI-BRACKET DIAM. 63 COUPLER EURO 7,2 MM	609	3	45.10
6660 63 A1	MINI-BRACKET DIAM. 63 COUPLER ARO 5,5 MM	468	3	45.70

>> TRANSAIR QUICK ASSEMBLY BRACKETS

MINI-BRACKET WITH BALL VALVE



Transair®		Weight - grams	Pack Qty	£ each
6669 25 21	TRANSAIR MINI-BRACKET D25 WITH BALL VALVE 1/2"BSPP	430	5	31.90
6669 40 21	TRANSAIR MINI-BRACKET D40 WITH BALL VALVE 1/2"BSPP	450	5	39.59
6669 40 27	TRANSAIR MINI-BRACKET D40 WITH BALL VALVE 3/4"BSPP	620	5	46.16
6669 63 21	TRANSAIR MINI-BRACKET D63 WITH BALL VALVE 1/2"BSPP	670	3	49.63
6669 63 27	TRANSAIR MINI-BRACKET D63 WITH BALL VALVE 3/4"BSPP	780	3	55.27

PRESSURISED SYSTEM OUTLET



Transair®		Weight - grams	Pack Qty	£ each
EA98 06 01	PRESSURISED SYSTEM OUTLET DIAM. 25	380	2	53.74
EA98 06 02	PRESSURISED SYSTEM OUTLET DIAM. 40	657	2	69.22
EA98 06 03	PRESSURISED SYSTEM OUTLET DIAM. 63	778	2	89.67

PRESSURISED SYSTEM DRILLING TOOL



Transair®		Weight - grams	Pack Qty	£ each
EA98 06 00	PRESSURISED SYSTEM DRILLING TOOL	820	1	411.98

>> TRANSAIR WALL BRACKETS

1 PORT 45° WALL BRACKET, BSP PARALLEL



Transair®		Weight - grams	Pack Qty	£ each
6639 17 21	TRANSAIR THREADED WALL BRACKET 1 X 1/2" OUTLET 45°	530	1	20.45
6639 25 21	TRANSAIR THREADED WALL BRACKET 1 X 1/2" OUTLET 45°	535	1	23.74

1 PORT 45° THREADED WALL BRACKET, BSP PARALLEL



Transair®		Weight - grams	Pack Qty	£ each
6641 21 21	TRANSAIR BRACKET F/F INLET 1 OUTLET 45° 1/2"BSPP	535	1	22.11

1 PORT 45° WALL BRACKET WITH COUPLER, BSP PARALLEL



Transair®		Weight - grams	Pack Qty	£ each
6677 17 A1	WALL BRACKET 16,5MM WITH COUPLER ARO 1PORT	661	1	41.20
6677 17 E4	WALL BRACKET 16,5MM WITH COUPLER EURO 1PORT	664	1	37.17
6677 17 U1	WALL BRACKET 16,5MM WITH COUPLER ISO B6 1PORT	615	1	36.96
6677 17 U2	WALL BRACKET 16,5MM WITH COUPLER ISO B8 1PORT	668	1	40.47
6677 25 A1	WALL BRACKET 25MM WITH COUPLER ARO 1PORT	658	1	42.00
6677 25 E4	WALL BRACKET 25MM WITH COUPLER EURO 1PORT	661	1	40.62
6677 25 U1	WALL BRACKET 25MM WITH COUPLER ISO B6 1PORT	640	1	40.40
6677 25 U2	WALL BRACKET 25MM WITH COUPLER ISO B8 1PORT	665	1	43.85

2 PORT 90° WALL BRACKET, BSP PARALLEL



Transair®		Weight - grams	Pack Qty	£ each
6681 17 21	2 PORT WALL BRACKET, G1/2 DIAM. 16,5	422	1	22.56
6681 25 21	2 PORT WALL BRACKET, G1/2 DIAM. 25	460	1	25.37

2 PORT 90° THREADED WALL BRACKET, BSP PARALLEL



Transair®		Weight - grams	Pack Qty	£ each
6686 21 21	2 PORT THREADED WALL BRACKET, G1/2	415	1	24.56

2 PORT 90° WALL BRACKET WITH COUPLERS, BSP PARALLEL



Transair®		Weight - grams	Pack Qty	£ each
6671 17 U1	2 PORT WALL BRACKET WITH COUPLER DIAM. 16,5 ISO B 5,5	645	1	51.67
6671 17 U2	2 PORT WALL BRACKET WITH COUPLER DIAM. 16,5 ISO B8	682	1	60.03
6671 17 E4	2 PORT WALL BRACKET WITH COUPLER DIAM. 16,5 EURO 7,2	698	1	52.65
6671 17 A1	2 PORT WALL BRACKET WITH COUPLER DIAM. 16,5 ARO 5,5	700	1	56.67
6671 25 U1	2 PORT WALL BRACKET WITH COUPLER DIAM. 25 ISO B 5,5	690	1	56.40
6671 25 U2	2 PORT WALL BRACKET WITH COUPLER DIAM. 25 ISO B8	755	1	64.24
6671 25 E4	2 PORT WALL BRACKET WITH COUPLER DIAM. 25 EURO 7,2	745	1	55.20
6671 25 A1	2 PORT WALL BRACKET WITH COUPLER DIAM. 25 ARO 5,5	735	1	61.06

>> TRANSAIR WALL BRACKET

2 PORT 45° WALL BRACKET, BSP PARALLEL



Transair®		Weight - grams	Pack Qty	£ each
6682 17 21	TRANSAIR THREADED WALL BRACKET 2 X 1/2" OUTLET	660	1	25.80
6682 25 21	TRANSAIR THREADED WALL BRACKET 2 X 1/2" OUTLET	680	1	28.96

2 PORT 45° THREADED WALL BRACKET, BSP PARALLEL



Transair®		Weight - grams	Pack Qty	£ each
6690 21 21	TRANSAIR WALL BRACKET F/F INLET 2 OUTLET 1/2"BSPP	672	1	27.55

2 PORT 45° WALL BRACKET WITH COUPLERS, BSP PARALLEL



Transair®		Weight - grams	Pack Qty	£ each
6692 17 A1	WALL BRACKET 16,5MM WITH COUPLER ARO	890	1	64.79
6692 17 E4	WALL BRACKET 16,5MM WITH COUPLER ARO	880	1	56.76
6692 17 U1	WALL BRACKET 16,5MM WITH COUPLER ISO B6	830	1	56.33
6692 17 U2	WALL BRACKET 16,5MM WITH COUPLER ISO B8	809	1	69.62
6692 25 A1	WALL BRACKET 25MM WITH COUPLER ARO	950	1	66.12
6692 25 E4	WALL BRACKET 25MM WITH COUPLER ARO	950	1	61.90
6692 25 U1	WALL BRACKET 25MM WITH COUPLER ISO B6	846	1	61.47
6692 25 U2	WALL BRACKET 25MM WITH COUPLER ISO B8	957	1	68.24

3 PORT WALL BRACKET, BSP PARALLEL



Transair®

Weight
- grams

Pack
Qty

£ each

6695 25 21

TRANSAIR THREADED WALL BRACKET 3 X 1/2" OUTLET 45°

725

1

35.24

3 PORT THREADED WALL BRACKET, BSP PARALLEL



Transair®

Weight
grams

Pack
Qty

£ each

6635 27 21

TRANSAIR THREADED WALL BRACKET 3 X 1/2" OUTLET 45°

750

1

33.99

WWW.AIRLINKCOMPRESSORS.CO.UK
TEL: 02392 851396

>> TRANSAIR WALL BRACKET

1 PORT 45° WALL BRACKET WITH BALL VALVE, BSP PARALLEL



Transair®		Weight - grams	Pack Qty	£ each
6678 17 21	WALL BRACKET 16,5MM BALL VALVE 1PORT 45° 1/2"BSPP	872	2	58.90
6678 25 21	WALL BRACKET 16,5MM BALL VALVE 1PORT 45° 1/2"BSPP	1,529	2	72.47

2 PORT 90° WALL BRACKET WITH BALL VALVE, BSP PARALLEL



Transair®		Weight - grams	Pack Qty	£ each
6672 17 21	WALL BRACKET 16,5MM BALL VALVE 2PORT 90° 1/2"BSPP	820	2	65.15
6672 25 21	WALL BRACKET 25MM BALL VALVE 2PORT 90° 1/2"BSPP	995	2	79.99

2 PORT 45° WALL BRACKET WITH BALL VALVE, BSP PARALLEL



Transair®		Weight - grams	Pack Qty	£ each
6693 17 21	WALL BRACKET 16,5MM BALL VALVE 2PORT 45° 1/2"BSPP	1,150	2	66.25
6693 25 21	WALL BRACKET 25MM BALL VALVE 2PORT 45° 1/2"BSPP	1,110	2	81.29

3 PORT WALL BRACKET WITH BALL VALVE, BSP PARALLEL



Transair®		Weight - grams	Pack Qty	£ each
6637 25 21	TRANSAIR THREADED WALL BRACKET 3 X 1/2" OUTLET 45°	1,731	2	81.74

>> TRANSAIR BALL VALVES & BUTTERFLY VALVES

DOUBLE FEMALE VENTED VALVE



Transair®		Weight - grams	Pack Qty	£ each
4089 17 00	DOUBLE FEMALE VENTED VALVE DIAM. 16,5	355	2	40.23
4089 25 00	DOUBLE FEMALE VENTED VALVE DIAM. 25	1,080	2	50.88

LOCKABLE VENTED VALVE



Transair®		Weight - grams	Pack Qty	£ each
4099 17 00	LOCKABLE VALVE, VENTED DIAM. 16,5	570	2	50.96
4099 25 00	LOCKABLE VALVE, VENTED DIAM. 25	1,225	2	61.87

DOUBLE FEMALE VALVE



Transair®		Weight - grams	Pack Qty	£ each
4002 40 00	DOUBLE FEMALE VALVE DIAM. 40	660	2	62.37
4002 63 00	DOUBLE FEMALE VALVE DIAM. 63	2,655	1	97.56

LOCKABLE VALVE



Transair®		Weight - grams	Pack Qty	£ each
4012 63 00	LOCKABLE VALVE	2,700	1	101.38

BUTTERFLY VALVE



Transair®		Weight - grams	Pack Qty	£ each
VR02 L1 00	BUTTERFLY VALVE DIAM. 76 SEAL NBR	8,200	1	136.89
VR02 L3 00	BUTTERFLY VALVE DIAM. 100 SEAL NBR	12,080	1	185.91

>> TRANSAIR BALL VALVES & BUTTERFLY VALVES

DOUBLE FEMALE BALL VALVE



Transair®		Weight - grams	Pack Qty	£ each
VR03 00 02	DOUBLE FEMALE VALVE, BSP PARALLEL G1/4	157	20	4.53
VR03 00 03	DOUBLE FEMALE VALVE, BSP PARALLEL G3/8	141	20	4.57
VR03 00 04	DOUBLE FEMALE VALVE, BSP PARALLEL G1/2	204	20	5.85
VR03 00 06	DOUBLE FEMALE VALVE, BSP PARALLEL G3/4	310	10	7.96
VR03 00 08	DOUBLE FEMALE VALVE BSP PARALLEL G1"	460	10	11.75
VR03 00 10	DOUBLE FEMALE VALVE, BSP PARALLEL G1"1/4	751	4	18.92
VR03 00 12	DOUBLE FEMALE VALVE, BSP PARALLEL G1"1/2	1,100	4	26.25
VR03 00 16	DOUBLE FEMALE VALVE, BSP PARALLEL G2"	1,644	2	38.31
VR03 00 20	DOUBLE FEMALE VALVE, BSP PARALLEL G2"1/2	2,979	1	77.17

MALE FEMALE BALL VALVE



Transair®		Weight - grams	Pack Qty	£ each
VR04 00 04	TRANSAIR BALL VALVE DOUBLE MALE/FEMALE 1/2" BSPT	230	5	8.09
VR04 00 06	TRANSAIR BALL VALVE DOUBLE MALE/FEMALE 3/4" BSPT	360	5	11.29

MINI-VALVE, MALE AND FEMALE, BSP TAPER



Transair®		Weight - grams	Pack Qty	£ each
4981 10 21TR	MINI-VALVE, MALE AND FEMALE, BSP TAPER 1/2	138	10	5.44

REMOTE CONTROL SHUT-OFF VALVE



Transair®		Weight - grams	Pack Qty	£ each
4230 00 40	REMOTE CONTROL SHUT-OFF VALVE DIAM. 40	1,817	1	133.50

PILOT KIT



Transair®		Weight - grams	Pack Qty	£ each
4299 03 01	PILOT KIT	788	1	117.23

>> TRANSAIR TOOLS

TOOL CASE



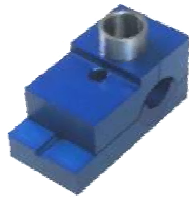
Transair®		Weight - grams	Pack Qty	£ each
6698 00 03	TOOL CASE DIAM. 16,5 > DIAM. 63	5,700	1	621.10
6698 00 04	TOOL CASE DIAM. 16,5 > DIAM. 40	3,200	1	401.32

PIPE CUTTER FOR ALUMINIUM PIPE



Transair®		Weight - grams	Pack Qty	£ each
6698 03 01	PIPE CUTTER DIAM. 16,5 > DIAM. 63 & DIAM. 22 > DIAM. 60	886	1	81.32
EW08 00 01	PIPE CUTTER DIAM. 63 > DIAM. 100	1,308	1	198.36
EW08 00 99	SPARE ROTARY CUTTER BLADE FOR 6698 03 01	8	2	14.81
EW08 00 02	SPARE ROTARY CUTTER BLADE FOR EW08 00 01	10	2	28.30

DRILLING JIG FOR ALUMINIUM PIPE



Transair®		Weight - grams	Pack Qty	£ each
6698 01 01	DRILLING JIG FOR RIGID ALUMINIUM PIPE DIAM. 25 AND DIAM. 40	860	1	127.82
6698 01 02	DRILLING JIG FOR RIGID ALUMINIUM PIPE DIAM. 63	1,731	1	159.03

DRILLING TOOL FOR ALUMINIUM PIPE



Transair®		Weight - grams	Pack Qty	£ each
6698 02 02	DRILLING TOOL FOR RIGID ALUMINIUM PIPE DIAM. 25	143	1	63.46
6698 02 01	DRILLING TOOL FOR RIGID ALUMINIUM PIPE DIAM. 40 AND DIAM. 63	154	1	63.42
EW09 00 22	DRILLING TOOL FOR 42MM AND 60MM ALUMINUM TUBE	120	1	47.35
EW09 00 30	DRILLING TOOL FOR RIGID ALUMINIUM PIPE DIAM. 76 AND DIAM. 100	127	1	55.00

DEBURRING TOOL FOR ALUMINIUM PIPE



Transair®		Weight - grams	Pack Qty	£ each
6698 04 02	DEBURRING TOOL	26	5	8.50

>> TRANSAIR TOOLS

CHAMFER TOOL FOR ALUMINIUM PIPE



Transair®		Weight - grams	Pack Qty	£ each
6698 04 01	CHAMFER TOOL DIAM. 16,5 > DIAM. 63	104	1	30.88

MARKING TOOL FOR ALUMINIUM PIPE



Transair®		Weight - grams	Pack Qty	£ each
6698 04 03	MARKING TOOL DIAM. 16,5 > DIAM. 40	42	1	4.40

SET OF TIGHTENING SPANNERS



Transair®		Weight - grams	Pack Qty	£ each
6698 05 03	SET OF TIGHTENING SPANNERS FOR DIAM. 63 & DIAM. 42 AND DIAM. 60 NUT:	789	1	50.15

PRESSURISED SYSTEM DRILLING TOOL



Transair®		Weight - grams	Pack Qty	£ each
EA98 06 00	PRESSURISED SYSTEM DRILLING TOOL	820	1	411.98

PORTABLE TOOL KIT



Transair®		Weight - grams	Pack Qty	£ each
EW01 00 01	PORTABLE TOOL KIT 220 V	9,240	1	1832.97

JAW SET FOR PORTABLE TOOL



Transair®		Weight - grams	Pack Qty	£ each
EW02 L1 00	JAWS SET FOR PORTABLE TOOL DIAM. 76	2,603	1	610.44
EW02 L3 00	JAWS SET FOR PORTABLE TOOL DIAM. 100	2,868	1	614.38

12V BATTERY FOR PORTABLE TOOL



Transair®		Weight - grams	Pack Qty	£ each
EW03 00 01	12V BATTERY FOR PORTABLE TOOL	690	1	174.46

WWW.AIRLINKCOMPRESSORS.CO.UK
TEL: 02392 851396

>> TRANSAIR FIXTURE AND ACCESSORIES

FIXING CLIPS FOR ALUMINIUM PIPE



Transair®		Weight - grams	Pack Qty	£ each
6697 17 00	FIXING CLIP FOR RIGID PIPE DIAM. 16,5	27	15	1.40
6697 25 00	FIXING CLIP FOR RIGID PIPE DIAM. 25	30	15	1.66
6697 25 00 50	FIXING CLIP FOR RIDGID PIPE DIAM 25 (60 CLIPS)	30	60	1.66
6697 40 00	FIXING CLIP FOR RIGID PIPE DIAM. 40	35	15	1.99
6697 40 00 50	FIXING CLIP FOR RIDGID PIPE DIAM 40 (60 CLIPS)	35	60	1.98
6697 63 00	FIXING CLIP FOR RIGID PIPE DIAM. 63	73	15	2.76
ER01 L1 00	FIXING CLIP FOR RIGID PIPE DIAM. 76	168	50	2.78
ER01 L3 00	FIXING CLIP FOR RIGID PIPE DIAM. 100	259	25	4.18

SPACER



Transair®		Weight - grams	Pack Qty	£ each
6697 00 03	SPACER DIAM. 16,5/25/40 > DIAM. 63	21	15	1.05

CLIP ADAPTOR



Transair®		Weight - grams	Pack Qty	£ each
6697 00 01	CLIP ADAPTOR FOR THREADED ROD M6 M8	35	15	1.08
6697 00 02	CLIP ADAPTOR FOR THREADED ROD M8 M10	56	15	1.46

U-CHANNEL



Transair®		Weight - grams	Pack Qty	£ each
6699 01 01	U-CHANNEL	1,584	5	14.70
6699 01 02	U-CHANNEL FIXING BRACKET	176	15	7.44
6699 01 03	U-CHANNEL CLIP FIXING SET FOR DIAM.63-76-100	936	5	1.46
6699 03 02	SUSPENSION FROM BEAM CLAMP	80	10	3.98

>> TRANSAIR FIXTURE AND ACCESSORIES
PUSH-ON TYPE BEAM CLAMP


Transair®		Weight - grams	Pack Qty	£ each
6699 02 01	PUSH-ON TYPE BEAM CLAMP H=44 M6	22	15	2.25
6699 02 02	PUSH-ON TYPE BEAM CLAMP H=46 M6	31	15	2.25
6699 02 03	PUSH-ON TYPE BEAM CLAMP H=54 M6	29	15	2.70
6699 02 04	PUSH-ON TYPE BEAM CLAMP H=66 M6	30	15	2.53
6699 02 05	PUSH-ON TYPE BEAM CLAMP H=44 M10	20	15	2.26
6699 02 06	PUSH-ON TYPE BEAM CLAMP H=46 M10	31	15	2.41

SCREW TYPE BEAM CLAMP


Transair®		Weight - grams	Pack Qty	£ each
6699 03 01	SCREW TYPE BEAM CLAMP M6	30	15	2.28
ER99 06 02	SCREW TYPE BEAM CLAMP M8	80	25	2.55
ER99 06 03	SCREW TYPE BEAM CLAMP M10	140	25	2.62

THREADED ROD KIT


Transair®		Weight - grams	Pack Qty	£ each
ER99 05 02	THREADED ROD KIT M8	3,550	1	29.76
ER99 05 03	THREADED ROD KIT M10	5,250	1	41.95

FIXTURE FOR CANALIS


Transair®		Weight - grams	Pack Qty	£ each
6699 10 01	FIXTURE FOR CANALIS KN	102	10	10.49
6699 10 02	FIXTURE FOR CANALIS KS	120	10	10.49

FIXTURE FOR CABLE TRAY


Transair®		Weight - grams	Pack Qty	£ each
6699 10 03	FIXTURE FOR CABLE TRAY	36	10	4.46

>> TRANSAIR HOSE REELS AND BLOWGUN

HOSE REELS



Transair®		Weight - grams	Pack Qty	£ each
6698 10 01	LIGHT SERIES HOSE REEL 10 M	3,400	1	157.80
6698 10 02	LIGHT SERIES HOSE REEL 16 M	6,440	1	209.86
6698 11 01	HEAVY DUTY HOSE REEL 21 M	11,740	1	392.02

PIVOTING BRACKET



Transair®		Weight - grams	Pack Qty	£ each
6698 11 98	PIVOTING BRACKET FOR HEAVY DUTY HOSE REEL	2,491	1	60.62

BLOWGUN



Transair®		Weight - grams	Pack Qty	£ each
EA59 00 13	BLOWGUN G1/4	107	5	7.86

>> TRANSAIR HOSE REELS AND BLOWGUN

PU RECOIL TUBING



Transair®		Weight - grams	Pack Qty	£ each
1470U06 04 13TR	PU RECOIL TUBING 2M 6X4 R1/4	178	1	16.89
1470U08 04 13TR	PU RECOIL TUBING 2M 8X5 R1/4	235	1	22.16
1470U10 04 13TR	PU RECOIL TUBING 2M 10X7 R1/4	448	1	28.88
1470U12 04 17TR	PU RECOIL TUBING 2M 12X8 R3/8	502	1	36.88
1471U06 04 13TR	PU RECOIL TUBING 4M 6X4 R1/4	243	1	30.57
1471U08 04 13TR	PU RECOIL TUBING 4M 8X5 R1/4	344	1	34.17
1471U10 04 13TR	PU RECOIL TUBING 4M 10X7 R1/4	660	1	43.89
1471U12 04 17TR	PU RECOIL TUBING 4M 12X8 R3/8	737	1	57.98
1472U08 04 13TR	PU RECOIL TUBING 6M 8X5 R1/4	460	1	39.19
1472U10 04 13TR	PU RECOIL TUBING 6M 10X7 R1/4	828	1	58.19
1472U12 04 17TR	PU RECOIL TUBING 6M 12X8 R3/8	900	1	83.26

BRAIDED PVC HOSE BLUE 25M



Transair®		Weight - grams	Pack Qty	£ each
1025V12 04 06TR	BRAIDED PVC HOSE 25M 12X6	3,080	1	19.79
1025V14 04 08TR	BRAIDED PVC HOSE 25M 14X8	3,280	1	23.81
1025V16 04 10TR	BRAIDED PVC HOSE 25M 16X10	4,040	1	28.62
1025V20 04 13TR	BRAIDED PVC HOSE 25M 20X13	5,360	1	38.50
1025V24 04 16TR	BRAIDED PVC HOSE 25M 24X16	8,820	1	49.65

CLIP FOR BRAIDED PVC HOSE



Transair®		Weight - grams	Pack Qty	£ each
0697 00 02TR	CLIP FOR BRAIDED HOSE DIAM.D=14	12	20	0.87
0697 00 03TR	CLIP FOR BRAIDED HOSE DIAM.D=16	14	20	0.98
0697 00 04TR	CLIP FOR BRAIDED HOSE DIAM.D=20	15	20	0.98
0697 00 05TR	CLIP FOR BRAIDED HOSE DIAM.D=24	16	20	1.34

>> TRANSAIR COMPOSITE AUTOMATIC SAFETY COUPLERS

MALE BODY BSP PARALLEL



Transair®		Weight - grams	Pack Qty	£ each
CP01 U1 02	MALE BODY, BSP PARALLEL ISO B 5,5 MM G1/4	74	1	11.12
CP01 U1 03	MALE BODY, BSP PARALLEL ISO B 6 G3/8	88	1	11.12
CP01 U1 04	MALE BODY, BSP PARALLEL ISO B 6 G1/2	117	1	12.75
CP01 U2 02	MALE BODY, BSP PARALLEL ISO B 8 G1/4	120	1	18.08
CP01 U2 03	MALE BODY, BSP PARALLEL ISO B 8 G3/8	117	1	18.08
CP01 U2 04	MALE BODY, BSP PARALLEL ISO B 8 G1/2	140	1	18.50
CP01 E4 02	MALE BODY, BSP PARALLEL EURO 7,2 MM G1/4	124	1	15.10
CP01 E4 03	MALE BODY, BSP PARALLEL EURO 7,2 MM G3/8	122	1	14.11
CP01 E4 04	MALE BODY, BSP PARALLEL EURO 7,2 MM G1/2	143	1	16.22
CP01 A1 02	MALE BODY, BSP PARALLEL ARO 5,5 MM G1/4	103	1	15.08
CP01 A1 03	MALE BODY, BSP PARALLEL 5,5 MM G3/8	118	1	15.08
CP01 A1 04	MALE BODY, BSP PARALLEL ARO 5,5 MM G1/2	146	1	17.66

FEMALE BODY BSP PARALLEL



Transair®		Weight - grams	Pack Qty	£ each
CP14 U1 02	FEMALE BODY, BSP PARALLEL ISO B 6 G1/4	64	1	11.12
CP14 U1 03	FEMALE BODY, BSP PARALLEL ISO B 6 G3/8	83	1	11.12
CP14 U1 04	FEMALE BODY, BSP PARALLEL ISO B 6 G1/2	117	1	13.56
CP14 U2 02	FEMALE BODY, BSP PARALLEL ISO B 8 G1/4	113	1	18.34
CP14 U2 03	FEMALE BODY, BSP PARALLEL ISO B 8 G3/8	104	1	18.55
CP14 U2 04	FEMALE BODY, BSP PARALLEL ISO B 8 G1/2	125	1	20.11
CP14 E4 02	FEMALE BODY, BSP PARALLEL EURO 7,2 MM G1/4	117	1	14.11
CP14 E4 03	FEMALE BODY, BSP PARALLEL EURO 7,2 MM G3/8	108	1	14.11
CP14 E4 04	FEMALE BODY, BSP PARALLEL EURO 7,2 MM G1/2	130	1	15.76
CP14 A1 02	FEMALE BODY, BSP PARALLEL ARO 5,5 MM G1/4	93	1	15.08
CP14 A1 03	FEMALE BODY, BSP PARALLEL ARO 5,5 MM G3/8	113	1	15.08
CP14 A1 04	FEMALE BODY, BSP PARALLEL ARO 5,5 MM G1/2	147	1	17.91

BODY WITH HOSETAIL



Transair®		Weight - grams	Pack Qty	£ each
CP21 U1 06	BODY WITH HOSETAIL ISO B 6 DIAM.D 6MM	70	1	11.12
CP21 U1 08	BODY WITH HOSETAIL ISO B 6 DIAM.D 8MM	71	1	11.12
CP21 U1 10	BODY WITH HOSETAIL ISO B 6 DIAM.D 10MM	72	1	11.12
CP21 U2 08	BODY WITH HOSETAIL ISO B 8 DIAM.D 8MM	109	1	18.06
CP21 U2 10	BODY WITH HOSETAIL ISO B 8 DIAM.D 10MM	110	1	18.06
CP21 U2 13	BODY WITH HOSETAIL ISO B 8 DIAM.D 13MM	114	1	18.06
CP21 E4 08	BODY WITH HOSETAIL EURO 7,2 MM DIAM.D 8MM	113	1	14.11
CP21 E4 10	BODY WITH HOSETAIL EURO 7,2 MM DIAM.D 10MM	114	1	14.11
CP21 E4 13	BODY WITH HOSETAIL EURO 7,2 MM DIAM.D 13MM	118	1	14.11
CP21 A1 06	BODY WITH HOSETAIL ARO 5,5 MM DIAM.D 6MM	100	1	16.16
CP21 A1 08	BODY WITH HOSETAIL ARO 5,5 MM DIAM.D 8MM	100	1	16.16
CP21 A1 10	BODY WITH HOSETAIL ARO 5,5 MM DIAM.D 10MM	101	1	16.16

>> TRANSAIR COMPOSITE AUTOMATIC SAFETY COUPLERS**MALE PROBE BSP PARALLEL**

Transair®		Weight - grams	Pack Qty	£ each
CA87 U1 02	MALE PROBE BSP PARALLEL ISO B 6 G1/4	25	5	2.10
CA87 U1 03	MALE PROBE BSP PARALLEL ISO B 6 G3/8	32	5	2.64
CA87 U1 04	MALE PROBE BSP PARALLEL ISO B 6 G1/2	48	5	3.78
CA87 U2 02	MALE PROBE BSP PARALLEL ISO B 8 G1/4	30	2	3.68
CA87 U2 03	MALE PROBE BSP PARALLEL ISO B 8 G3/8	36	2	3.67
CA87 U2 04	MALE PROBE BSP PARALLEL ISO B 8 G1/2	58	2	4.50
CA87 E4 02	MALE PROBE BSP PARALLEL EURO 7,2 MM G1/4	18	2	1.86
CA87 E4 03	MALE PROBE BSP PARALLEL EURO 7,2 MM G3/8	26	2	2.26
CA87 E4 04	MALE PROBE BSP PARALLEL EURO 7,2 MM G1/2	48	2	2.73
CA87 A1 02	MALE PROBE BSP PARALLEL ARO 5,5 MM G1/4	20	5	2.24
CA87 A1 03	MALE PROBE BSP PARALLEL ARO 5,5 MM G3/8	23	5	3.64
CA87 A1 04	MALE PROBE BSP PARALLEL ARO 5,5 MM G1/2	49	5	5.23

FEMALE PROBE BSP PARALLEL

Transair®		Weight - grams	Pack Qty	£ each
CA86 U1 02	FEMALE PROBE BSP PARALLEL ISO B 5,5 MM G1/4	22	5	2.00
CA86 U1 03	FEMALE PROBE BSP PARALLEL ISO B 5,5 MM G3/8	25	5	2.64
CA86 U1 04	FEMALE PROBE BSP PARALLEL ISO B 5,5 MM G1/2	39	5	3.50
CA86 U2 02	FEMALE PROBE BSP PARALLEL ISO B 8 MM G1/4	32	2	3.17
CA86 U2 03	FEMALE PROBE BSP PARALLEL ISO B 8MM G3/8	35	2	3.36
CA86 U2 04	FEMALE PROBE BSP PARALLEL ISO B 8 MM G1/2	47	2	3.63
CA86 E4 02	FEMALE PROBE BSP PARALLEL EURO 7,2 MM G1/4	27	2	1.83
CA86 E4 03	FEMALE PROBE BSP PARALLEL EURO 7,2 MM G3/8	27	2	2.16
CA86 E4 04	FEMALE PROBE BSP PARALLEL EURO 7,2 MM G1/2	50	2	3.17
CA86 A1 02	FEMALE PROBE BSP PARALLEL ARO 5,5 MM G1/4	24	5	2.10
CA86 A1 03	FEMALE PROBE BSP PARALLEL ARO 5,5 MM G3/8	24	5	2.46
CA86 A1 04	FEMALE PROBE BSP PARALLEL ARO 5,5 MM G1/2	39	5	5.33

PROBE WITH HOSETAIL

Transair®		Weight - grams	Pack Qty	£ each
CA94 U1 06	PROBE WITH HOSETAIL ISO B 6 DIAM.D 6MM	16	5	1.66
CA94 U1 08	PROBE WITH HOSETAIL ISO B 6 DIAM.D 8MM	18	5	1.71
CA94 U1 10	PROBE WITH HOSETAIL ISO B 6 DIAM.D 10MM	18	5	1.90
CA94 U2 08	PROBE WITH HOSETAIL ISO B 8 DIAM.D 8MM	27	2	3.10
CA94 U2 10	PROBE WITH HOSETAIL ISO B 8 DIAM.D 10MM	28	2	3.23
CA94 U2 13	PROBE WITH HOSETAIL ISO B 8 DIAM.D 13MM	31	2	3.67
CA94 E4 08	PROBE WITH HOSETAIL EURO 7,2 MM DIAM.D 8MM	15	2	1.21
CA94 E4 10	PROBE WITH HOSETAIL EURO 7,2 MM DIAM.D 10MM	16	2	1.32
CA94 E4 13	PROBE WITH HOSETAIL EURO 7,2 MM DIAM.D 13MM	20	2	1.80
CA94 A1 06	PROBE WITH HOSETAIL ARO 5,5 MM DIAM.D 6MM	14	5	1.48
CA94 A1 08	PROBE WITH HOSETAIL ARO 5,5 MM DIAM.D 8MM	14	5	1.58
CA94 A1 10	PROBE WITH HOSETAIL ARO 5,5 MM DIAM.D 10MM	16	5	1.48

>> TRANSAIR METAL AUTOMATIC SAFETY COUPLERS

MALE BODY



Transair®		Weight - grams	Pack Qty	£ each
9D05 09 13P4	MALE BODY BSP TAPER ISO B 6 R1/4 S	113	5	18.12
9D05 09 17P4	MALE BODY BSP TAPER ISO B 6 R3/8 S	121	5	18.12
9D05 09 21P4	MALE BODY BSP TAPER ISO B 6 R1/2 S	136	5	19.29
9D05 10 13P4	MALE BODY BSP TAPER ISO B 8 R1/4 S	205	2	31.64
9D05 10 17P4	MALE BODY BSP TAPER ISO B 8 R3/8 S	212	2	31.64
9D05 10 21P4	MALE BODY BSP TAPER ISO B 8 R1/2 S	225	2	31.64
9D01 01 13P483	MALE BODY BSP PARALLEL ISO C 6 G1/4 S	77	5	17.90
9D01 01 17P483	MALE BODY BSP PARALLEL ISO C 6 G3/8 S	86	5	18.15
9D01 01 21P483	MALE BODY BSP PARALLEL ISO C 6 G1/2 S	114	5	18.15
9D01 02 13P483	MALE BODY BSP PARALLEL ISO C 8 G1/4 S	140	2	29.93
9D01 02 17P483	MALE BODY BSP PARALLEL ISO C 8 G3/8 S	144	2	29.93
9D01 02 21P483	MALE BODY BSP PARALLEL ISO C 8 G1/2 S	166	2	30.60
9D01 01 13P183	MALE BODY BSP PARALLEL ISO C 6 G1/4	68	5	17.46
9D01 01 17P183	MALE BODY BSP PARALLEL ISO C 6 G3/8	79	5	17.46
9D01 01 21P183	MALE BODY BSP PARALLEL ISO C 6 G1/2	105	5	17.46

FEMALE BODY



Transair®		Weight - grams	Pack Qty	£ each
9D14 09 13P4	FEMALE BODY BSP PARALLEL ISO B 6 G1/4 S	112	5	17.58
9D14 09 17P4	FEMALE BODY BSP PARALLEL ISO B 6 G3/8 S	137	5	18.12
9D14 09 21P4	FEMALE BODY BSP PARALLEL ISO B 6 G1/2 S	158	5	19.29
9D14 10 13P4	FEMALE BODY BSP PARALLEL ISO B 8 G1/4 S	225	2	30.32
9D14 10 17P4	FEMALE BODY BSP PARALLEL ISO B 8 G3/8 S	211	2	30.25
9D14 10 21P4	FEMALE BODY BSP PARALLEL ISO B 8 G1/2 S	259	2	30.32
9D14 01 13P483	FEMALE BODY BSP PARALLEL ISO C 6 G1/4 S	75	5	16.66
9D14 01 17P483	FEMALE BODY BSP PARALLEL ISO C 6 G3/8 S	99	5	17.61
9D14 01 21P483	FEMALE BODY BSP PARALLEL ISO C 6 G1/2 S	121	5	17.61
9D14 02 13P483	FEMALE BODY BSP PARALLEL ISO C 8 G1/4 S	160	2	28.86
9D14 02 17P483	FEMALE BODY BSP PARALLEL ISO C 8 G3/8 S	158	2	28.33
9D14 02 21P483	FEMALE BODY BSP PARALLEL ISO C 8 G1/2 S	194	2	29.14
9D14 03 17P483	FEMALE BODY BSP PARALLEL ISO C 11 G3/8 S	249	1	52.49
9D14 03 21P483	FEMALE BODY BSP PARALLEL ISO C 11 G1/2 S	261	1	51.42
9D14 01 13P183	FEMALE BODY BSP PARALLEL ISO C 6 G1/4	68	5	15.56
9D14 01 17P183	FEMALE BODY BSP PARALLEL ISO C 6 G3/8	89	5	16.51

BODY WITH HOSETAIL



Transair®		Weight - grams	Pack Qty	£ each
9D21 09 06P4	BODY WITH HOSETAIL ISO B 6 D 6 MM S	109	5	18.73
9D21 09 08P4	BODY WITH HOSETAIL ISO B 6 D 8 MM S	110	5	18.55
9D21 09 10P4	BODY WITH HOSETAIL ISO B 6 D 8 MM S	115	5	18.55
9D21 10 08P4	BODY WITH HOSETAIL ISO B 8 D 8 MM S	210	2	31.64
9D21 10 10P4	BODY WITH HOSETAIL ISO B 8 D 10 MM S	210	2	31.64
9D21 01 06P483	BODY WITH HOSETAIL ISO C 6 D 6 MM S	72	5	17.61
9D21 01 08P483	BODY WITH HOSETAIL ISO C 6 D 8 MM S	74	5	17.61
9D21 01 09P483	BODY WITH HOSETAIL ISO C 6 D 9 MM S	74	5	17.61
9D21 01 13P483	BODY WITH HOSETAIL ISO C 6 D 13 MM S	103	5	18.15
9D21 02 10P483	BODY WITH HOSETAIL ISO C 8 D 10 MM S	157	2	29.14
9D21 02 13P483	BODY WITH HOSETAIL ISO C 8 D 13 MM S	156	2	29.14
9D21 03 13P483	BODY WITH HOSETAIL ISO C 11 D 13 MM S	239	1	53.02
9D21 03 16P483	BODY WITH HOSETAIL ISO C 11 D 16 MM S	244	1	53.02
9D21 01 10P183	BODY WITH HOSETAIL ISO C 6 D 10 MM	67	5	16.51

>> TRANSAIR METAL AUTOMATIC SAFETY COUPLERS

MALE PROBE



Transair®		Weight - grams	Pack Qty	£ each
9084 23 13TR	MALE THREADED BSP PARALLEL ISO B 6 G1/4	22	5	1.75
9084 23 17TR	MALE THREADED BSP PARALLEL ISO B 6 G3/8	30	5	2.53
9084 30 13TR	MALE THREADED BSP PARALLEL ISO B 8 G1/4	32	2	4.14
9084 30 17TR	MALE THREADED BSP PARALLEL ISO B 8 G3/8	34	2	5.23
9084 30 21TR	MALE THREADED BSP PARALLEL ISO B 8 G1/2	56	2	5.49
9A87 01 10X099	MALE PROBE BSP PARALLEL ISO C 6 G1/8	17	5	6.49
9A87 01 13X099	MALE PROBE BSP PARALLEL ISO C 6 G1/4	26	5	4.22
9A87 01 17X099	MALE PROBE BSP PARALLEL ISO C 6 G3/8	39	5	5.29
9A87 02 13X099	MALE PROBE BSP PARALLEL ISO C 8 G1/4	44	2	7.45
9A87 02 17X099	MALE PROBE BSP PARALLEL ISO C 8 G3/8	50	2	8.84
9A87 02 21X099	MALE PROBE BSP PARALLEL ISO C 8 G1/2	72	2	9.32
9A87 03 17X099	MALE PROBE BSP PARALLEL ISO C 11 G3/8	57	1	10.57
9A87 03 21X099	MALE PROBE BSP PARALLEL ISO C 11 G1/2	81	1	10.57

FEMALE PROBE



Transair®		Weight - grams	Pack Qty	£ each
9086 23 13TR	FEMALE PROBE BSP PARALLEL ISO B 6 G1/4	22	5	1.90
9086 23 17TR	FEMALE PROBE BSP PARALLEL ISO B 6 G3/8	25	5	2.52
9086 30 13TR	FEMALE PROBE BSP PARALLEL ISO B 8 G1/4	32	2	4.28
9086 30 17TR	FEMALE PROBE BSP PARALLEL ISO B 8 G3/8	35	2	4.37
9086 30 21TR	FEMALE PROBE BSP PARALLEL ISO B 8 G1/2	45	2	5.68
9A86 01 10X099	FEMALE PROBE BSP PARALLEL ISO C 6 G1/8	19	5	7.04
9A86 01 13X099	FEMALE PROBE BSP PARALLEL ISO C 6 G1/4	31	5	4.22
9A86 01 70X099	FEMALE PROBE BSP PARALLEL ISO C 6 M14X1,25	27	5	9.29
9A86 02 13X099	FEMALE PROBE BSP PARALLEL ISO C 8 G1/4	38	2	7.57
9A86 02 17X099	FEMALE PROBE BSP PARALLEL ISO C 8 G3/8	53	2	9.33
9A86 02 21X099	FEMALE PROBE BSP PARALLEL ISO C 8 G1/2	66	2	9.11
9A86 03 17X099	FEMALE PROBE BSP PARALLEL ISO C 11 G3/8	93	1	12.62
9A86 03 21X099	FEMALE PROBE BSP PARALLEL ISO C 11 G1/2	77	1	12.23

PROBE WITH HOSETAIL



Transair®		Weight - grams	Pack Qty	£ each
9085 23 06TR	PROBE WITH HOSETAIL ISO B 6 D 6 MM	16	5	2.34
9085 23 08TR	PROBE WITH HOSETAIL ISO B 6 D 8 MM	18	5	2.07
9085 23 10TR	PROBE WITH HOSETAIL ISO B 6 D 10 MM	18	5	2.30
9085 30 08TR	PROBE WITH HOSETAIL ISO B 8 D 8 MM	27	2	3.73
9085 30 10TR	PROBE WITH HOSETAIL ISO B 8 D 10 MM	28	2	3.92
9085 30 13TR	PROBE WITH HOSETAIL ISO B 8 D 13 MM	31	2	4.14
9A94 01 06X099	PROBE WITH HOSETAIL ISO C 6 D 6 MM	15	5	4.49
9A94 01 08X099	PROBE WITH HOSETAIL ISO C 6 D 8 MM	17	5	3.92
9A94 01 10X099	PROBE WITH HOSETAIL ISO C 8 D 10 MM	19	5	4.07
9A94 01 13X099	PROBE WITH HOSETAIL ISO C 8 D 13 MM	34	5	7.40
9A94 02 06X099	PROBE WITH HOSETAIL ISO C 8 D 6 MM	32	2	7.57
9A94 02 08X099	PROBE WITH HOSETAIL ISO C 8 D 8 MM	32	2	7.57
9A94 02 10X099	PROBE WITH HOSETAIL ISO C 8 D 10 MM	33	2	7.57
9A94 02 13X099	PROBE WITH HOSETAIL ISO C 8 D 13 MM	45	2	8.13
9A94 03 08X099	PROBE WITH HOSETAIL ISO C 11 D 8 MM	49	1	14.37
9A94 03 13X099	PROBE WITH HOSETAIL ISO C 11 D 13 MM	58	1	14.37
9A94 03 16X099	PROBE WITH HOSETAIL ISO C 11 D 16 MM	59	1	14.37

>> TRANSAIR CONNECTION ACCESSORIES

EQUAL/UNEQUAL ADAPTOR, MALE BSP TAPER



Transair®		Weight - grams	Pack Qty	£ each
EF00 00 02	STRAIGHT MALE BSPT EQUAL/UNEQUAL ADAPTOR R1/4 R1/4	18	10	0.84
EF00 00 03	STRAIGHT MALE BSPT EQUAL/UNEQUAL ADAPTOR R3/8 R3/8	26	10	1.13
EF00 00 04	STRAIGHT MALE BSPT EQUAL/UNEQUAL ADAPTOR R1/2 R1/2	45	10	1.95
EF00 00 06	STRAIGHT MALE BSPT EQUAL/UNEQUAL ADAPTOR R3/4 R3/4	90	5	3.10
EF00 00 08	STRAIGHT MALE BSPT EQUAL/UNEQUAL ADAPTOR R1" R1"	153	5	9.25
EF00 00 10	STRAIGHT MALE BSPT EQUAL/UNEQUAL ADAPTOR R1"1/4 R1"1/4	167	5	35.90
EF00 00 12	STRAIGHT MALE BSPT EQUAL/UNEQUAL ADAPTOR R1"1/2 R1"1/2	220	2	41.80
EF00 00 16	STRAIGHT MALE BSPT EQUAL/UNEQUAL ADAPTOR R2" R2"	371	2	43.39
EF00 00 20	STRAIGHT MALE BSPT EQUAL/UNEQUAL ADAPTOR R2"1/2 R2"1/2	559	1	82.22
EF00 02 03	STRAIGHT MALE BSPT EQUAL/UNEQUAL ADAPTOR R1/4 R3/8	26	10	1.13
EF00 02 04	STRAIGHT MALE BSPT EQUAL/UNEQUAL ADAPTOR R1/4 R1/2	46	10	2.49
EF00 03 04	STRAIGHT MALE BSPT EQUAL/UNEQUAL ADAPTOR R3/8 R1/2	46	10	1.95
EF00 04 06	STRAIGHT MALE BSPT EQUAL/UNEQUAL ADAPTOR R1/2 R3/4	84	10	3.10
EF00 06 08	STRAIGHT MALE BSPT EQUAL/UNEQUAL ADAPTOR R3/4 R1"	143	5	7.12
EF00 08 10	STRAIGHT MALE BSPT EQUAL/UNEQUAL ADAPTOR R1" R1"1/4	159	5	25.62
EF00 10 12	STRAIGHT MALE BSPT EQUAL/UNEQUAL ADAPTOR R1"1/4 R1"1/2	214	2	32.71
EF00 10 16	STRAIGHT MALE BSPT EQUAL/UNEQUAL ADAPTOR R1"1/4 R2"	376	2	50.92
EF00 12 16	STRAIGHT MALE BSPT EQUAL/UNEQUAL ADAPTOR R1"1/2 R2"	360	2	49.67
EF00 12 20	STRAIGHT MALE BSPT EQUAL/UNEQUAL ADAPTOR R1"1/2 R2"1/2	643	1	80.04
EF00 16 20	STRAIGHT MALE BSPT EQUAL/UNEQUAL ADAPTOR R2" R2"1/2	573	1	87.41

EQUAL/UNEQUAL ADAPTOR, FEMALE BSP PARALLEL



Transair®		Weight - grams	Pack Qty	£ each
EF02 00 02	STRAIGHT FEMALE BSPP EQUAL/UNEQUAL ADAPTOR G1/4 G1/4	20	10	0.99
EF02 00 03	STRAIGHT FEMALE BSPP EQUAL/UNEQUAL ADAPTOR G3/8 G3/8	34	10	1.65
EF02 00 04	STRAIGHT FEMALE BSPP EQUAL/ UNEQUAL ADAPTOR G1/2 G1/2	50	10	2.17
EF02 00 06	STRAIGHT FEMALE BSPP EQUAL/UNEQUAL ADAPTOR G3/4 G3/4	79	5	3.73
EF02 01 02	STRAIGHT FEMALE BSPP EQUAL/UNEQUAL ADAPTOR G1/8 G1/4	16	10	0.82
EF02 01 03	STRAIGHT FEMALE BSPP EQUAL/UNEQUAL ADAPTOR G1/8 G3/8	27	10	1.36
EF02 02 03	STRAIGHT FEMALE BSPP EQUAL/UNEQUAL ADAPTOR G1/4 G3/8	31	10	1.41
EF02 02 04	STRAIGHT FEMALE BSPP EQUAL/UNEQUAL ADAPTOR G1/4 G1/2	32	10	2.01
EF02 03 04	STRAIGHT FEMALE BSPP EQUAL/UNEQUAL ADAPTOR G3/8 G1/2	36	10	2.10
EF02 04 06	STRAIGHT FEMALE BSPP EQUAL/UNEQUAL ADAPTOR G1/2 G3/4	77	5	3.73

>> TRANSAIR CONNECTION ACCESSORIES

INCREASER MALE BSP TAPER, FEMALE BSP PARALLEL



Transair®		Weight - grams	Pack Qty	£ each
EF06 00 02	INCREASER MALE BSPT R1/4 -FEMALE BSPP G1/4	19	10	0.76
EF06 00 03	INCREASER MALE BSPT R3/8 -FEMALE BSPP G3/8	36	10	1.60
EF06 00 04	INCREASER MALE BSPT R1/2 -FEMALE BSPP G1/2	56	10	2.52
EF06 00 06	INCREASER MALE BSPT R3/4 -FEMALE BSPP G3/4	49	5	17.17
EF06 00 08	INCREASER MALE BSPT R1" -FEMALE BSPP G1"	53	5	15.67
EF06 00 10	INCREASER MALE BSPT R1"1/4 -FEMALE BSPP G1"1/4	134	5	22.30
EF06 00 12	INCREASER MALE BSPT R1"1/2 -FEMALE BSPP G1"1/2	187	2	44.85
EF06 00 16	INCREASER MALE BSPT R2" -FEMALE BSPP G2"	282	2	44.95
EF06 00 20	INCREASER MALE BSPT R2"1/2 -FEMALE BSPP G2"1/2	451	2	79.81
EF06 01 02	INCREASER MALE BSPT R1/8 -FEMALE BSPP G1/4	17	10	0.73
EF06 01 03	INCREASER MALE BSPT R1/8 -FEMALE BSPP G3/8	28	10	1.51
EF06 02 03	INCREASER MALE BSPT R1/4 -FEMALE BSPP G3/8	31	10	1.21
EF06 02 04	INCREASER MALE BSPT R1/4 -FEMALE BSPP G1/2	36	10	1.86
EF06 03 04	INCREASER MALE BSPT R3/8 -FEMALE BSPP G1/2	53	10	2.02
EF06 04 06	INCREASER MALE BSPT R1/2 -FEMALE BSPP G3/4	43	10	26.24
EF06 04 08	INCREASER MALE BSPT R1/2 -FEMALE BSPP G1"	69	10	14.89
EF06 06 08	INCREASER MALE BSPT R3/4 -FEMALE BSPP G1"	74	5	18.76
EF06 08 10	INCREASER MALE BSPT R1" -FEMALE BSPP G1"1/4	120	5	24.52
EF06 10 12	INCREASER MALE BSPT R1"1/4 -FEMALE BSPP G1"1/2	178	2	34.29
EF06 10 16	INCREASER MALE BSPT R1"1/4 -FEMALE BSPP G2"	241	2	50.31
EF06 12 16	INCREASER MALE BSPT R1"1/2 -FEMALE BSPP G2"	242	2	50.42
EF06 12 20	INCREASER MALE BSPT R1"1/2 -FEMALE BSPP G2"1/2	379	2	84.40
EF06 16 20	INCREASER MALE BSPT R2" -FEMALE BSPP G2"1/2	419	2	89.52

REDUCER MALE BSP TAPER, FEMALE BSP PARALLEL



Transair®		Weight - grams	Pack Qty	£ each
EF04 01 02	REDUCER MALE BSPT R1/4 -FEMALE BSPP G1/8	10	10	1.01
EF04 01 03	REDUCER MALE BSPT R3/8 -FEMALE BSPP G1/8	21	10	1.42
EF04 02 03	REDUCER MALE BSPT R3/8 -FEMALE BSPP G1/4	14	10	1.18
EF04 02 04	REDUCER MALE BSPT R1/2 -FEMALE BSPP G1/4	36	10	1.68
EF04 03 04	REDUCER MALE BSPT R1/2 -FEMALE BSPP G3/8	27	10	1.77
EF04 03 06	REDUCER MALE BSPT R3/4 -FEMALE BSPP G3/8	66	10	2.60
EF04 04 06	REDUCER MALE BSPT R3/4 -FEMALE BSPP G1/2	50	10	2.21

FEMALE ELBOW BSP PARALLEL



Transair®

		Weight - grams	Pack Qty	£ each
EF12 00 02	EQUAL FEMALE ELBOW BSPP. G1/4	41	10	1.78
EF12 00 03	EQUAL FEMALE ELBOW BSPP. G3/8	59	10	2.21
EF12 00 04	EQUAL FEMALE ELBOW BSPP. G1/2	105	10	3.56
EF12 00 06	EQUAL FEMALE ELBOW BSPP. G3/4	145	5	4.42

WWW.AIRLINKCOMPRESSORS.CO.UK
TEL: 02392 851396

>> TRANSAIR CONNECTION ACCESSORIES

STUD ELBOW, MALE BSP TAPER FEMALE BSP PARALLEL



Transair®		Weight - grams	Pack Qty	£ each
EF13 00 02	EQUAL FEMALE STUD ELBOW BSPP G1/4, MALE BSPT R1/4	34	10	1.71
EF13 00 03	EQUAL FEMALE STUD ELBOW BSPP G3/8, MALE BSPT R3/8	50	10	2.12
EF13 00 04	EQUAL FEMALE STUD ELBOW BSPP G1/2, MALE BSPT R1/2	89	10	3.42
EF13 00 06	EQUAL FEMALE STUD ELBOW BSPP G3/4, MALE BSPT R3/4	124	5	4.08

MALE STUD ELBOW, BSP TAPER



Transair®		Weight - grams	Pack Qty	£ each
EF14 00 02	EQUAL MALE STUD ELBOW BSPT R1/4	28	10	1.64
EF14 00 03	EQUAL MALE STUD ELBOW BSPT R3/8	40	10	2.34
EF14 00 04	EQUAL MALE STUD ELBOW BSPT R1/2	70	10	3.42
EF14 00 06	EQUAL MALE STUD ELBOW BSPT R3/4	101	5	4.65

EQUAL Y FEMALE BSP PARALLEL



Transair®		Weight - grams	Pack Qty	£ each
EF10 00 02	EQUAL Y FEMALE BSPP. G1/4	33	10	2.00
EF10 00 03	EQUAL Y FEMALE BSPP. G3/8	44	10	2.90
EF10 00 04	EQUAL Y FEMALE BSPP. G1/2	89	10	4.39

EQUAL Y FEMALE BSP PARALLEL, MALE BSP TAPER



Transair®		Weight - grams	Pack Qty	£ each
EF11 00 04	EQUAL Y FEMALE BSPP G1/2, MALE BSPT R1/2	101	5	5.15

>> TRANSAIR CONNECTION ACCESSORIES

EQUAL FEMALE TEE BSP PARALLEL



Transair®		Weight - grams	Pack Qty	£ each
EF15 00 02	EQUAL FEMALE TEE BSPP. G1/4	57	10	2.22
EF15 00 03	EQUAL FEMALE TEE BSPP.G3/8	84	10	3.29
EF15 00 04	EQUAL FEMALE TEE BSPP.G1/2	144	10	5.09
EF15 00 06	EQUAL FEMALE TEE BSPP G3/4	197	5	6.52

MALE STUD BRANCH TEE, FEMALE BSP PARALLEL



Transair®		Weight - grams	Pack Qty	£ each
EF16 00 02	MALE STUD BRANCH TEE, FEMALE BSPP G1/4, MALE BSPT R1/4	50	10	2.00
EF16 00 03	MALE STUD BRANCH TEE, FEMALE BSPP G3/8, MALE BSPT R3/8	74	10	2.96
EF16 00 04	MALE STUD BRANCH TEE, FEMALE BSPP G1/2, MALE BSPT R1/2	129	5	4.69
EF16 00 06	MALE STUD BRANCH TEE, FEMALE BSPP G3/8, MALE BSPT R3/8	178	5	6.36

MALE STUD RUN TEE, FEMALE BSP PARALLEL, MALE BSP TAPER



Transair®		Weight - grams	Pack Qty	£ each
EF17 00 02	MALE STUD RUN TEE, FEMALE BSPP G1/4, MALE BSPT R1/4	51	10	2.00
EF17 00 03	MALE STUD RUN TEE, FEMALE BSPP G3/8, MALE BSPT R3/8	73	10	2.96
EF17 00 04	MALE STUD RUN TEE, FEMALE BSPP G1/2, MALE BSPT R1/2	127	5	4.69
EF17 00 06	MALE STUD RUN TEE, FEMALE BSPP G3/4, MALE BSPT R3/4	178	5	5.80

TAILPIECE ADAPTOR MALE BSP TAPER FOR PVC HOSE



Transair®		Weight - grams	Pack Qty	£ each
EF26 06 01	TAILPIECE ADAPTOR FOR PVC HOSE MALE BSPP DIAM.D 6 MM G1/8	9	10	0.67
EF26 06 02	TAILPIECE ADAPTOR FOR PVC HOSE MALE BSPP DIAM.D 6 MM G1/4	13	10	0.81
EF26 08 02	TAILPIECE ADAPTOR FOR PVC HOSE MALE BSPP DIAM.D 8 MM G1/4	14	10	0.90
EF26 08 03	TAILPIECE ADAPTOR FOR PVC HOSE MALE BSPP DIAM.D 8 MM G3/8	23	10	0.98
EF26 10 02	TAILPIECE ADAPTOR FOR PVC HOSE MALE BSPP DIAM.D 10 MM G1/4	16	10	0.93
EF26 10 03	TAILPIECE ADAPTOR FOR PVC HOSE MALE BSPP DIAM.D 10 MM G3/8	24	10	1.09
EF26 10 04	TAILPIECE ADAPTOR FOR PVC HOSE MALE BSPP DIAM.D 10 MM G1/2	32	10	1.29
EF26 13 02	TAILPIECE ADAPTOR FOR PVC HOSE MALE BSPP DIAM.D 13 MM G1/4	29	10	1.29
EF26 13 03	TAILPIECE ADAPTOR FOR PVC HOSE MALE BSPP DIAM.D 13 MM G3/8	27	10	1.28
EF26 13 04	TAILPIECE ADAPTOR FOR PVC HOSE MALE BSPP DIAM.D 13 MM G1/2	41	10	2.05
EF26 16 03	TAILPIECE ADAPTOR FOR PVC HOSE MALE BSPP DIAM.D 16 MM G3/8	37	10	1.51
EF26 16 04	TAILPIECE ADAPTOR FOR PVC HOSE MALE BSPP DIAM.D 16 MM G1/2	43	10	1.95

>> TRANSAIR FRL, AUTOMATIC DRAINS AND ACCESSORIES

FILTER REGULATOR



Transair®		Weight - grams	Pack Qty	£ each
6700 00 13	FILTER REGULATOR G1/4	342	1	36.82
6700 00 21	FILTER REGULATOR G1/2	721	1	58.32

PRESSURE REGULATOR



Transair®		Weight - grams	Pack Qty	£ each
6701 00 13	PRESSURE REGULATOR G1/4	315	1	25.20
6701 00 21	PRESSURE REGULATOR G1/2	420	1	44.24

FILTER REGULATOR LUBRICATOR SET



Transair®		Weight - grams	Pack Qty	£ each
6707 00 13	FILTER REGULATION LUBRICATOR SET G1/4	637	1	70.81
6707 00 21	FILTER REGULATION LUBRICATOR SET G1/2	1,267	1	118.21

FILTER REGULATOR AND LUBRICATOR WITH GAUGE



Transair®

		Weight - grams	Pack Qty	£ each
6708 00 13	FILTER REGULATOR AND LUBRICATOR WITH GAUGE G1/4	779	1	77.73
6708 00 21	FILTER REGULATOR AND LUBRICATOR WITH GAUGE G1/2	1,316	1	128.38

FILTER SEPARATOR



Transair®

		Weight - grams	Pack Qty	£ each
6702 00 13	FILTER SEPARATOR G1/4	275	1	22.46
6702 00 21	FILTER SEPARATOR G1/2	510	1	40.92

WWW.AIRLINKCOMPRESSORS.CO.UK
TEL: 02392 851396

>> TRANSAIR FRL, AUTOMATIC DRAINS AND ACCESSORIES

LUBRICATOR



Transair®		Weight - grams	Pack Qty	£ each
6703 00 13	OIL MIST LUBRICATOR G1/4	287	1	26.44
6703 00 21	OIL MIST LUBRICATOR G1/2	531	1	42.89

AUTOMATIC DRAIN



Transair®		Weight - grams	Pack Qty	£ each
6706 00 21	AUTOMATIC DRAIN G1/2	340	1	73.02

3/2 IN-LINE VENT VALVE



Transair®		Weight - grams	Pack Qty	£ each
6704 00 13	3/2 IN-LINE VENT VALVE G1/4	244	1	41.27
6704 00 21	3/2 IN-LINE VENT VALVE G1/2	390	1	45.99

FRONT AND REAR PORT CONNECTOR BLOCK



Transair®		Weight - grams	Pack Qty	£ each
6705 00 13	FRONT AND REAR PORT CONNECTOR BLOCK G1/4	225	1	16.60
6705 00 21	FRONT AND REAR PORT CONNECTOR BLOCK G1/2	415	1	16.86

PRESSURE GAUGE



Transair®		Weight - grams	Pack Qty	£ each
6798 00 05	PRESSURE GAUGE G1/8	77	1	8.01
6798 00 06	PRESSURE GAUGE G1/4	98	1	8.34

>> TRANSAIR FRL, AUTOMATIC DRAINS AND ACCESSORIES

PROTECTION BOWL



Transair®		Weight - grams	Pack Qty	£ each
6798 00 07	PROTECTION BOWL G1/4	70	1	6.48
6798 00 08	PROTECTION BOWL G1/2	180	1	11.74

MOUNTING BRACKET



Transair®		Weight - grams	Pack Qty	£ each
6798 00 01	MOUNTING BRACKETS G1/4	141	1	12.71
6798 00 02	MOUNTING BRACKETS G1/2	133	1	9.13

ASSEMBLY KIT



Transair®		Weight - grams	Pack Qty	£ each
6798 00 03	ASSEMBLY KITS G1/4	19	1	3.51
6798 00 04	ASSEMBLY KITS G1/2	29	1	3.51

PLUG



Transair®		Weight - grams	Pack Qty	£ each
3126 14 00TR	PLUG	5	5	1.49

FEMALE STUD FITTING BSP PARALLEL



Transair®		Weight - grams	Pack Qty	£ each
3114 14 17TR	FEMALE PARALLEL STUD FITTING DIAM.D 14 MM G3/8	56	5	8.82

>> TRANSAIR STAINLESS STEEL PIPE

STAINLESS STEEL PIPE



Transair®

Weight
- grams

Pack Qty

£ each

TF03 N7 00	STAINLESS STEEL PIPE DIAM. 22 LONG : 3M	1,860	6	52.03
TF06 N7 00	STAINLESS STEEL PIPE DIAM. 22 LONG : 6M	3,720	6	106.33
TF03 N9 00	STAINLESS STEEL PIPE DIAM. 28 LONG : 3M	2,430	5	65.76
TF06 N9 00	STAINLESS STEEL PIPE DIAM. 28 LONG : 6M	4,860	5	129.46
TX03 M4 00	STAINLESS STEEL PIPE DIAM. 42 LONG : 3M	4,902	3	109.93
TX06 M4 00	STAINLESS STEEL PIPE DIAM. 42 LONG : 6M	9,804	3	195.15
TX03 M6 00	STAINLESS STEEL PIPE DIAM. 60 LONG : 3M	7,053	2	135.21
TX06 M6 00	STAINLESS STEEL PIPE DIAM. 60 LONG : 6M	14,106	2	253.09
TX03 L1 00	STAINLESS STEEL PIPE DIAM. 76 LONG : 3M	8,955	2	160.82
TX06 L1 00	STAINLESS STEEL PIPE DIAM. 76 LONG : 6M	17,910	2	273.65
TX03 L3 00	STAINLESS STEEL PIPE DIAM. 100 LONG : 3M	14,964	2	242.21
TX06 L3 00	STAINLESS STEEL PIPE DIAM. 100 LONG : 6M	29,928	2	441.04

>> TRANSAIR PIPE-TO-PIPE AND STUD CONNECTORS

PIPE-TO-PIPE CONNECTOR



Transair®

		Weight - grams	Pack Qty	£ each
RR06 N7 01	PIPE-TO-PIPE CONNECTOR DIAM.22	125	5	11.79
RR06 N9 01	PIPE-TO-PIPE CONNECTOR DIAM. 28	245	2	14.80
RP06 M4 01	PIPE-TO-PIPE CONNECTOR DIAM. 42	493	1	23.91
RP06 M6 01	PIPE-TO-PIPE CONNECTOR DIAM. 60	656	1	30.87
RR01 L1 01	PIPE-TO-PIPE CONNECTOR (CLAMP & CARTRIDGE) DIAM. 76	1,131	8	42.22
RR01 L3 01	PIPE-TO-PIPE CONNECTOR (CLAMP & CARTRIDGE) DIAM. 100	1,480	6	49.36

90° ELBOW



Transair®

		Weight - grams	Pack Qty	£ each
RR02 N7 01	90° ELBOW DIAM. 22	160	5	12.88
RR02 N9 01	90° ELBOW DIAM. 28	266	2	16.20
RP02 M4 01	90° ELBOW DIAM. 42	599	1	40.27
RP02 M6 01	90° ELBOW DIAM. 60	825	1	53.30
RX02 L1 00	90° ELBOW DIAM. 76	1,033	1	52.47
RX02 L3 00	90° ELBOW DIAM. 100	1,417	1	85.59

45° ELBOW



Transair®

		Weight - grams	Pack Qty	£ each
RX12 M4 00	45° ELBOW DIAM. 42	481	1	60.47
RX12 M6 00	45° ELBOW DIAM. 60	527	1	75.28
RX12 L1 00	45° ELBOW DIAM. 76	704	1	69.65
RX12 L3 00	45° ELBOW DIAM. 100	1,309	1	112.59

180° ELBOW

FY11 GBP (£) Price List

Transair®



RX32 M4 00

1/2" DIAM. 42

Weight
- grams

Pack Qty

£ each

RX32 M6 00

180° ELBOW DIAM. 60

721

1

69.07

1,440

1

108.66

WWW.AIRLINKCOMPRESSORS.CO.UK
TEL: 02392 851396

>> TRANSAIR PIPE-TO-PIPE AND STUD CONNECTORS

EQUAL TEE



Transair®

		Weight - grams	Pack Qty	£ each
RR04 N7 01	EQUAL TEE DIAM. 22	210	5	16.15
RR04 N9 01	EQUAL TEE DIAM. 28	389	2	22.84
RP04 M4 01	EQUAL TEE DIAM. 42	894	1	57.41
RP04 M6 01	EQUAL TEE DIAM. 60	1,200	1	75.63
RX04 L1 00	EQUAL TEE DIAM. 76	1,063	1	88.97
RX04 L3 00	EQUAL TEE DIAM. 100	1,787	1	114.11

REDUCING TEE



Transair®

		Weight - grams	Pack Qty	£ each
RR04 N9 N7 01	REDUCING TEE DIAM. 28 > DIAM. 22	326	2	16.22
RX04 L1 M4	REDUCING TEE DIAM. 76 > DIAM. 42	1,029	1	57.99
RX04 L1 M6	REDUCING TEE DIAM. 76 > DIAM. 60	1,103	1	74.25
RX04 L3 M4	REDUCING TEE DIAM. 100 > DIAM. 42	1,680	1	75.55
RX04 L3 M6	REDUCING TEE DIAM. 100 > DIAM. 60	1,739	1	88.12
RX04 L3 L1	REDUCING TEE DIAM. 100 > DIAM. 76	1,637	1	107.43

THREADED TEE



Transair®

		Weight - grams	Pack Qty	£ each
RR23 N7 06 01	THREADED TEE DIAM. 22 G3/4	189	5	17.73
RX23 L1 04	THREADED TEE DIAM. 76 G1/2	892	1	73.98
RX23 L3 04	THREADED TEE DIAM. 100 G1/2	1,564	1	91.96

PLUG-IN REDUCER



FY11 GBP (£) Price List

Transair®



- RX66 M6 M4**
- RX66 L1 M6**
- RX66 L3 L1**

PLUG-IN REDUCER DIAM. 60 > DIAM. 42
 PLUG-IN REDUCER DIAM. 100 > DIAM. 60
 PLUG-IN REDUCER DIAM. 100 > DIAM. 76

Weight - grams	Pack Qty	£ each
376	1	81.40
549	1	81.73
702	1	106.67

WWW.AIRLINKCOMPRESSORS.CO.UK
 TEL: 02392 851396

>> TRANSAIR PIPE-TO-PIPE AND STUD CONNECTORS

END CAP



Transair®		Weight - grams	Pack Qty	£ each
RR25 N7 01	END CAP DIAM. 22	81	5	11.53
RR25 N9 01	END CAP DIAM. 28	146	2	14.15
RR25 M4 00	END CAP DIAM. 42	465	1	34.97
RR25 M6 00	END CAP DIAM. 60	718	1	47.41
RX25 L1 00	END CAP DIAM. 76	346	1	51.26
RX25 L3 00	END CAP DIAM. 100	539	1	60.98

MALE STUD FITTING, BSP TAPER



Transair®		Weight - grams	Pack Qty	£ each
RR05 N7 04 01	MALE STUD FITTING, BSP TAPER DIAM. 22 R1/2	100	5	13.29
RR05 N7 06 01	MALE STUD FITTING, BSP TAPER DIAM. 22 R3/4	104	5	14.10
RR05 N9 08 01	MALE STUD FITTING, BSP TAPER DIAM. 28 R1	181	2	17.69



Transair®		Weight - grams	Pack Qty	£ each
RR05 M4 06	MALE THREADED ADAPTOR DIAM. 42 R1/2	557	1	71.54
RR05 M4 10	MALE THREADED ADAPTOR DIAM. 42 R1"1/4	896	1	73.26
RR05 M4 12	MALE THREADED ADAPTOR DIAM. 42 R1"1/2	588	1	78.58
RR05 M6 06	MALE THREADED ADAPTOR DIAM. 60 R3/4	1,005	1	114.33
RR05 M6 16	MALE THREADED ADAPTOR DIAM. 60 R2"	1,787	1	81.66
RR05 M6 20	MALE THREADED ADAPTOR DIAM. 60 R2" 1/2	2,217	1	131.13
RR05 L1 20	MALE THREADED ADAPTOR DIAM. 76 R2"1/2	1,968	1	130.66
RR14 M4 06	D42FEMALE ADAPTER 3/4" BSP PARALLEL	600	1	76.96
RR14 M4 08	D42 FEMALE ADAPTER 1" BSP PARALLEL	800	1	99.88
RR14 M6 06	D60 FEMALE ADAPTER 3/4" BSP PARALLEL	1,000	1	104.19
RR14 M6 08	D60 FEMALE ADAPTER 1" BSP PARALLEL	850	1	112.68

>> TRANSAIR QUICK ASSEMBLY FEED BRACKET

QUICK ASSEMBLY FEED BRACKET



Transair®

Weight
-grams

Pack Qty

£ each

RR82 M4 06 01	QUICK ASSEMBLY DIRECT FEED BRACKET DIAM. 42 3/4"	800	1	48.83
RR82 M6 06 01	QUICK ASSEMBLY DIRECT FEED BRACKET DIAM. 60 3/4"	1,000	1	63.97
RR82 L1 08 01	QUICK ASSEMBLY DIRECT FEED BRACKET DIAM. 76 R1"	1,950	1	87.98
RR82 L3 08 01	QUICK ASSEMBLY DIRECT FEED BRACKET DIAM. 100 R1"	1,960	1	94.56

WWW.AIRLINKCOMPRESSORS.CO.UK
TEL: 02392 851396

>> TRANSAIR BALL VALVES AND BUTTERFLY VALVES

BUTTERFLY VALVE



Transair®

Weight - grams Pack Qty £ each

VR02 M4 01	BUTTERFLY VALVE DIAM. 42 DN 32 SEAL EPDM	2,584	1	105.43
VR02 M6 01	BUTTERFLY VALVE DIAM. 60 DN 50 SEAL EPDM	3,212	1	109.54
VR02 L1 01	BUTTERFLY VALVE DIAM. 76 DN 65 SEAL EPDM	6,100	1	136.89
VR02 L3 01	BUTTERFLY VALVE DIAM. 100 DN 100 SEAL EPDM	9,180	1	195.91

Delivered with bolts

FLANGE



Transair®

Weight - grams Pack Qty £ each

RX30 M4 00	FLANGE DIAM. 42 DN 32	1,250	1	93.18
RX30 M6 00	FLANGE DIAM. 60 DN 50	1,700	1	111.38
RX30 L1 00	FLANGE DIAM. 76 DN 65	1,940	1	146.03
RX30 L1 00 01	FLANGE DIAM. 76 DN 80	2,250	1	167.11
RX30 L3 00	FLANGE DIAM. 100 DN 100	2,680	1	191.39

FLANGE GASKET



Transair®

Weight - grams Pack Qty £ each

EW05 M4 01	FLANGE GASKET DIAM. 42 DN 32	28	1	2.39
EW05 M6 01	FLANGE GASKET DIAM. 60 DN 50	36	1	3.29
EW05 L1 01	FLANGE GASKET DIAM. 76 DN 65	28	1	3.97
EW05 L1 00 01	FLANGE GASKET DIAM. 76 DN 80	33	1	1.79
EW05 L3 01	FLANGE GASKET DIAM. 100 DN 100	35	1	6.62

FLANGE BOLT KIT



FY11 GBP (£) Price List

Transair®



Weight - grams Pack Qty £ each

EW06 00 01	FLANGE BOLT KIT	1,257	1	11.18
------------	-----------------	-------	---	-------

Contains 8 bolts and 8 nuts

WWW.AIRLINKCOMPRESSORS.CO.UK
 TEL: 02392 851396

>> TRANSAIR BALL VALVES AND BUTTERFLY VALVES

DOUBLE FEMALE VALVE



Transair®		Weight - grams	Pack Qty	£ each
VR03 00 02	DOUBLE FEMALE VALVE, BSP PARALLEL G1/4	157	20	4.53
VR03 00 03	DOUBLE FEMALE VALVE, BSP PARALLEL G3/8	141	20	4.57
VR03 00 04	DOUBLE FEMALE VALVE, BSP PARALLEL G1/2	204	20	5.85
VR03 00 06	DOUBLE FEMALE VALVE, BSP PARALLEL G3/4	310	10	7.96
VR03 00 08	DOUBLE FEMALE VALVE BSP PARALLEL G1"	460	10	11.75
VR03 00 10	DOUBLE FEMALE VALVE, BSP PARALLEL G1"1/4	751	4	18.92
VR03 00 12	DOUBLE FEMALE VALVE, BSP PARALLEL G1"1/2	1,100	4	26.25
VR03 00 16	DOUBLE FEMALE VALVE, BSP PARALLEL G2"	1,644	2	38.31
VR03 00 20	DOUBLE FEMALE VALVE, BSP PARALLEL G2"1/2	2,979	1	77.17

>> TRANSAIR TOOL

PORTABLE TOOL KIT



Transair®		Weight - grams	Pack Qty	£ each
EW01 00 01	PORTABLE TOOL KIT 220 V	9,240	1	1,832.97

JAW FOR PORTABLE TOOL



Transair®		Weight - grams	Pack Qty	£ each
EW02 M4 00	JAWS SET FOR PORTABLE TOOL DIAM. 42	2,262	1	514.71
EW02 M6 00	JAWS SET FOR PORTABLE TOOL DIAM. 60	2,621	1	514.71
EW02 L1 00	JAWS SET FOR PORTABLE TOOL DIAM. 76	2,603	1	610.44
EW02 L3 00	JAWS SET FOR PORTABLE TOOL DIAM. 100	2,868	1	614.38

12V BATTERY FOR PORTABLE TOOL



Transair®		Weight - grams	Pack Qty	£ each
EW03 00 01	12V BATTERY FOR PORTABLE TOOL	690	1	174.46

CUTTER FOR ALUMINUM AND STAINLESS STEEL PIPE



Transair®		Weight - grams	Pack Qty	£ each
6698 03 01	PIPE CUTTER DIAM. 16,5 > DIAM. 63 & DIAM. 22 > DIAM. 60	886	1	81.32
EW08 00 01	PIPE CUTTER DIAM. 63 > DIAM. 100	1,308	1	198.36
EW08 00 02	SPARE ROTARY CUTTER BLADE FOR EW08 00 01	10	2	28.30

DRILLING TOOL FOR STAINLESS STEEL PIPE



Transair®

		Weight - grams	Pack Qty	£ each
EW09 00 22	DRILLING TOOL FOR RIGID ALUMINIUM PIPE DIAM. 60MM ALUMINUM TUBE	120	1	47.35
EW09 00 30	DRILLING TOOL FOR RIGID ALUMINIUM PIPE DIAM. 76 AND DIAM. 100	127	1	55.00

WWW.AIRLINKCOMPRESSORS.CO.UK
 TEL: 02392 851396

>> TRANSAIR TOOL

SET OF TIGHTENING SPANNERS



Transair®

6698 05 03

SET OF TIGHTENING SPANNERS FOR DIAM. 63 & DIAM. 42 AND DIAM. 60 NU

Weight
- grams

789

Pack Qty

1

£ each

50.15

MOUNTING TOOL D22 AND D28



Transair®

EW11 00 01

MOUNTING TOOL DIAM. 22 AND DIAM. 28

Weight
- grams

100

Pack Qty

1

£ each

29.55

MAINTENANCE SET D22 AND D28



Transair®

EW10 N7 01

MAINTENANCE SET DIAM. 22

Weight
- grams

40

Pack Qty

1

£ each

5.05

EW10 N9 01

MAINTENANCE SET DIAM. 28

70

1

7.92

>> TRANSAIR FIXTURE AND ACCESSORIES

FIXING CLIP FOR STAINLESS STEEL PIPE



Transair®		Weight - grams	Pack Qty	£ each
ER01 N7 00	FIXING CLIP FOR STEEL PIPE DIAM. 22	66	25	1.77
ER01 N9 00	FIXING CLIP FOR STEEL PIPE DIAM. 28	72	25	1.90
ER01 M4 00	FIXING CLIP FOR STEEL PIPE DIAM. 42	88	25	2.74
ER01 M6 00	FIXING CLIP FOR STEEL PIPE DIAM. 60	132	25	4.57
ER01 L1 00	FIXING CLIP FOR RIGID PIPE DIAM. 76	168	50	2.78
ER01 L3 00	FIXING CLIP FOR RIGID PIPE DIAM. 100	259	25	4.18

STAINLESS STEEL FIXING CLIP



Transair®		Weight - grams	Pack Qty	£ each
EX01 M4 00	STAINLESS STEEL FIXING CLIP DIAM. 42	69	15	5.93
EX01 M6 00	STAINLESS STEEL FIXING CLIP DIAM. 60	104	15	7.58
EX01 L1 00	STAINLESS STEEL FIXING CLIP DIAM. 76	111	25	7.64
EX01 L3 00	STAINLESS STEEL FIXING CLIP DIAM. 100	144	25	10.98

SCREW TYPE BEAM CLAMP



Transair®		Weight - grams	Pack Qty	£ each
ER99 06 02	SCREW TYPE BEAM CLAMP M8	80	25	2.55
ER99 06 03	SCREW TYPE BEAM CLAMP M10	140	25	2.62

THREADED ROD KIT



FY11 GBP (£) Price List

Transair®



		Weight - grams	Pack Qty	£ each
ER99 05 02	THREADED ROD KIT M8 - Contains 10 x 1m threaded rods, 10 threaded sockets + 50 nuts	3,550	1	29.76
ER99 05 03	THREADED ROD KIT M10 - Contains 10 x 1m threaded rods, 10 threaded sockets + 50 nuts	5,250	1	41.95

WWW.AIRLINKCOMPRESSORS.CO.UK
 TEL: 02392 851396