

# **Aisle Stripe Applicator**

## ***Instructions Manual***



**Pristine Products, LLC**

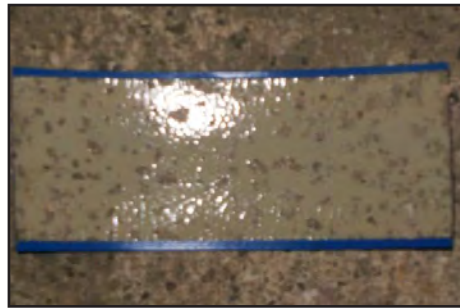


# Step 1

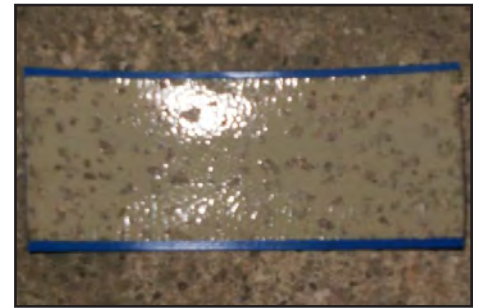
- Ensure that the area the stripe is adhering to is clean and dry. The ambient temperature should also be above 55 F.
- How dirty is too dirty? A quick test is to apply a 6" sample to the desired area. Remove the sample from the floor and look at the adhesive side of the stripe. *Some samples are shown below.*



Sticky side of aisle stripe prior to adhering to floor.



Sticky side of aisle stripe after adhering to dirty floor: *Floor is too dirty too get good adhesion.*



Sticky side of aisle stripe after adhering to same cleaned floor. Note: Good adhesion did not occur here. The floor this was applied to was over 100 yrs old. The concrete was very porous and flaking breaking down.

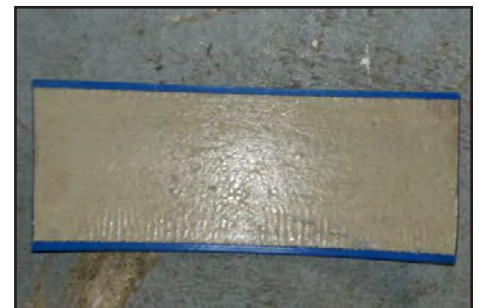
## *Is your floor clean enough?*



Sticky side of aisle stripe prior to adhering the sample to the floor.



Sticky side of aisle stripe after adhering sample to a new sealed concrete floor. Floor was only swept clean. Adhesion was good but not the best. Note the contaminants on the adhesive.



Sticky side of aisle stripe after adhering sample to the same new sealed floor. Floor was swept and scrubbed clean. Adhesion was very good. Difficulty was experience removing the sample from the floor. Note the reduction in contaminants on the adhesive.



# Step 2

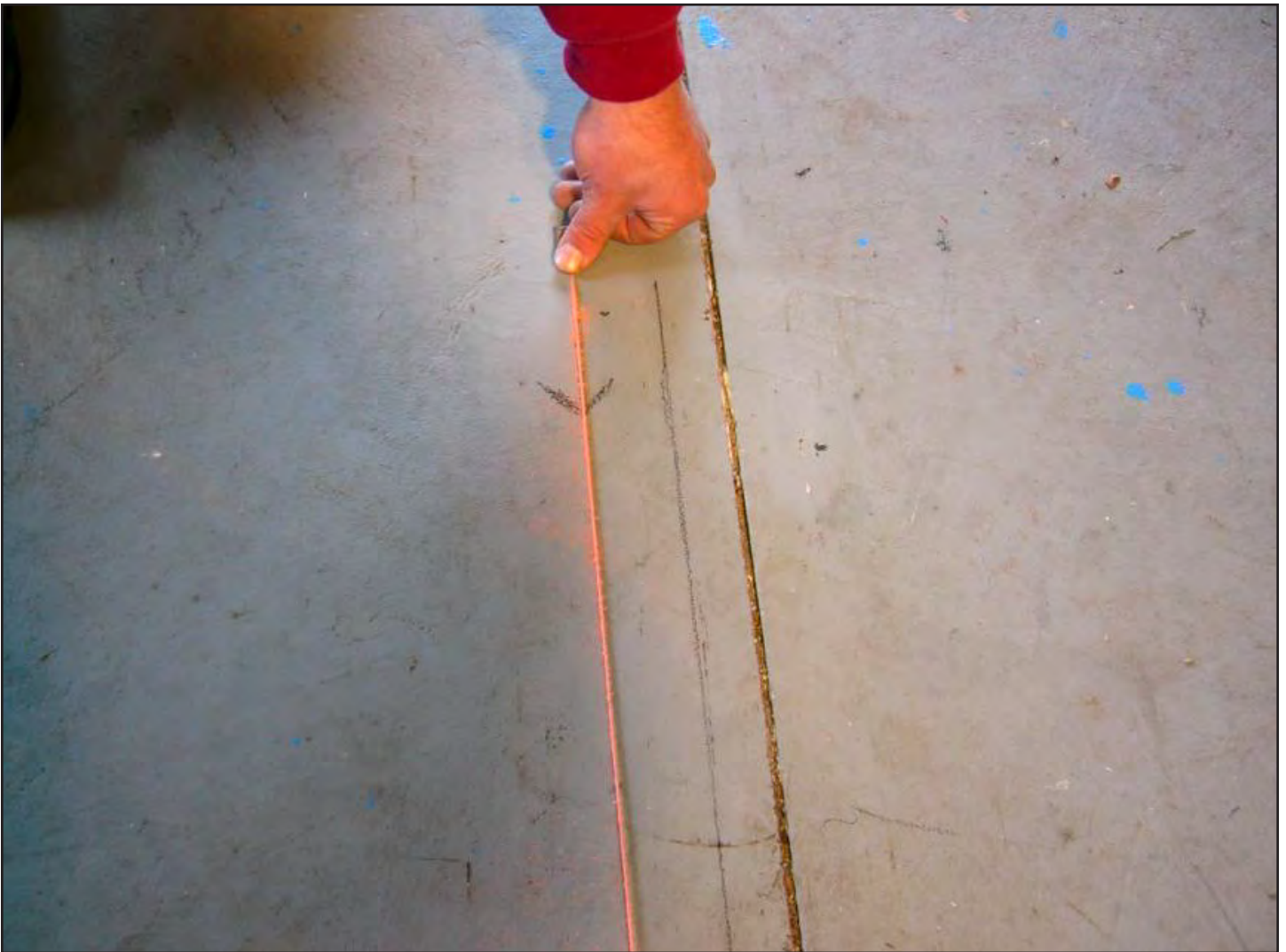
- Remove Applicator from box.





# Step 3

- Establish line parallel to the desired aisle stripe location. Allow approximately 2" between desired location and the reference line.



# Step 4

- Ensure the correct spacers for the correct sized aisle stripe width are in the right position.



**2" Spacer & Pin Locations**



**3" Spacer & Pin Locations**



**4" Spacer & Pin Locations**



# Step 5

- Position the applicator so the edge of the applicator wheel is close to the desired starting point of the aisle stripe.
- Push the cam take-up roller lever forward. This separates the 5" applicator take-up roller from the 10" applicator roller.
- Separate the 5" take up roller and 10" roll.

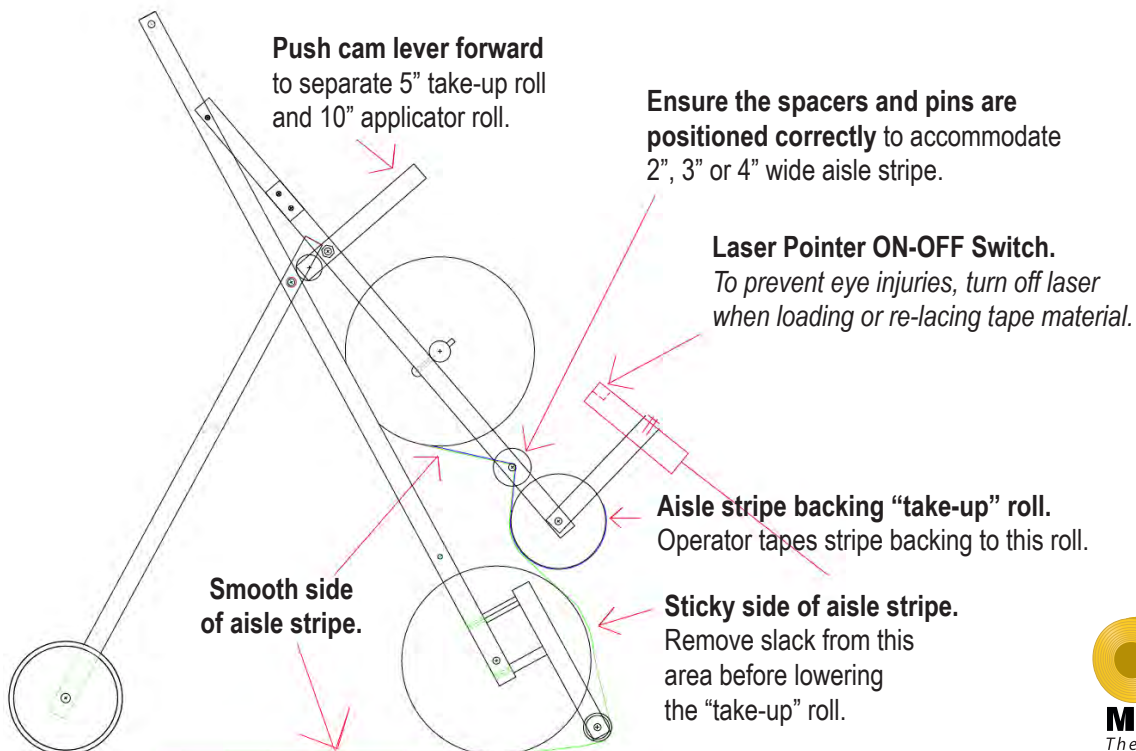




# Step 6



- Thread the aisle stripe through the applicator.
- Remove the backing from the bottom side of the aisle stripe and tape it to the 5" diameter applicator roller.



# Step 7



- Stick the desired starting point of the aisle stripe to the floor.

- Remove the slack from the stripe by rotating the supply stripe back onto the 100' roll and rotating the 5" diameter roller so the stripe backing is in tension.

*Make sure the blue backing is secure to the 5" diameter wheel and that it does not slip as you push the applicator forward.*





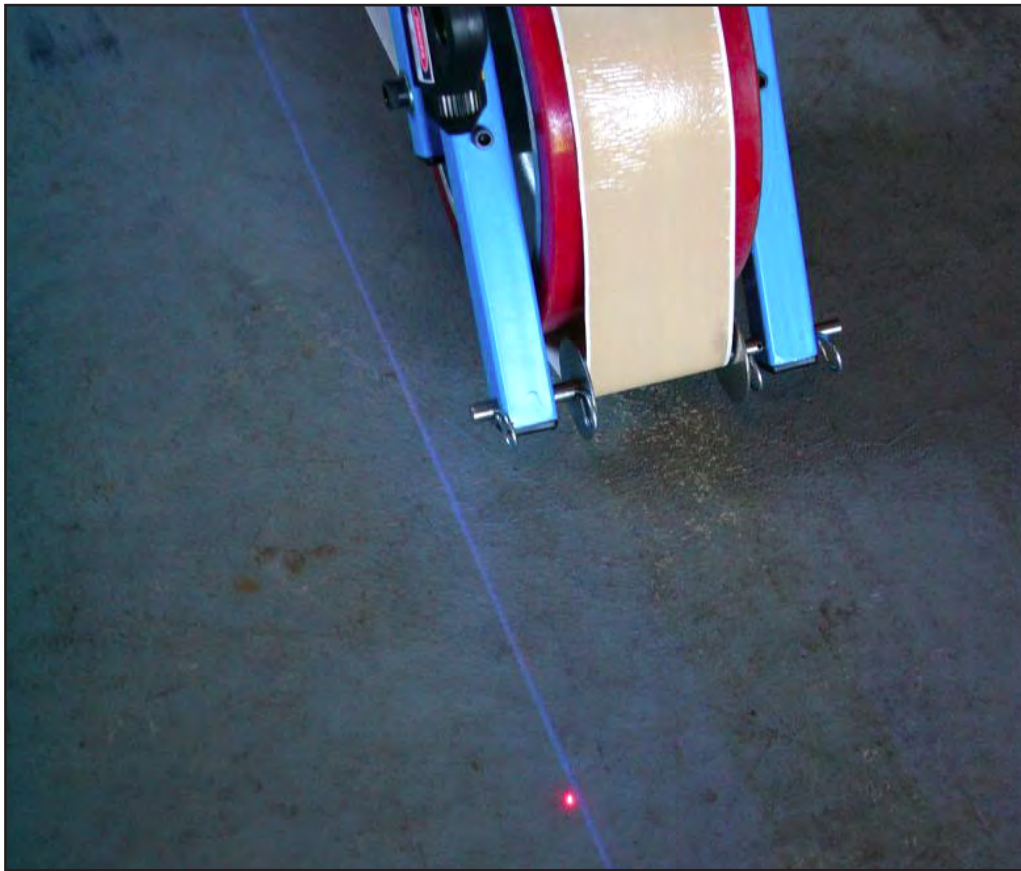
# Step 8

- Pull the take-up roll cam lever toward the operator. This will engage the 5" diameter roll with the 10" diameter roll.
- **DO NOT FORGET THIS STEP.**



# Step 9

- Turn on the laser pointer and position it so it is pointing to the reference line. **Secure the laser pointer to this position.**



# Step 10

- Push the applicator forward keeping the laser pointer shining on the reference line.





## **Pristine Products, LLC**

655 S. Stone Rd.

Liberty, IN 47353

**[www.piprd.com](http://www.piprd.com)**

**Phone: (765) 458-7463**

Fax: (765) 458-0282

Email: [tony@piprd.com](mailto:tony@piprd.com)

