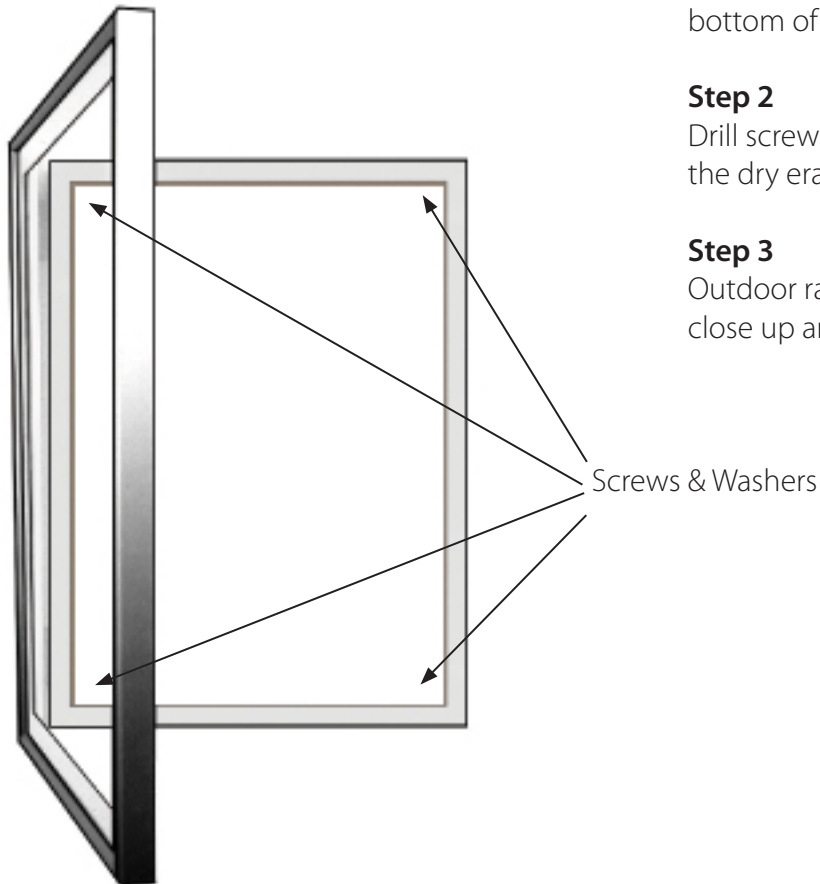


## Instruction Sheet

### Wall Mounting - Indoor Enclosed Dry Erase Marker Boards



#### Step 1

Drill holes in each of the four corners of the dry erase board (make sure drain holes are on the bottom of the unit when drilling into wall).

#### Step 2

Drill screws into the wall (use washers to protect the dry erase board from the screw pressure).

#### Step 3

Outdoor rated clear sealant can then be used to close up any holes to protect the display.



**Simple hand tools required:** Level, Drill, Screwdriver