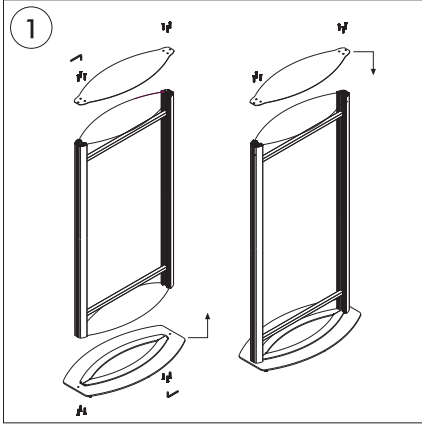


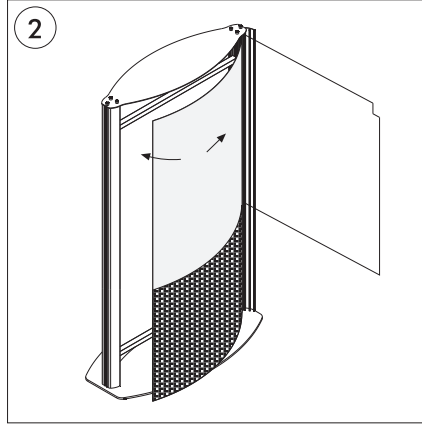
Instruction Sheet

Illuminated Curved Totem Floor Display Double Sided with Decorative Panel (For Posters 24 x 36)

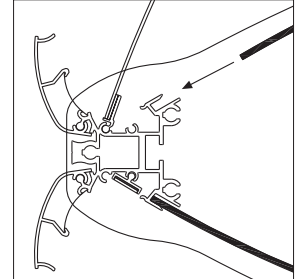
• ASSEMBLY OF PRODUCT



- Fix by screwing bottom and then top plates to side column on both sides.

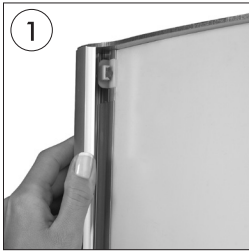


- Place decorative bottom and opaque top sheets into channels on side columns.

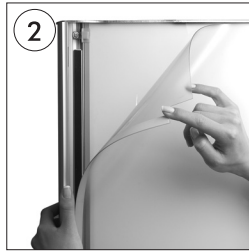


- Replacement of opaque sheets.
- Einschubung der opelen Acrylscheibe
- Opak fon yerleşimi.

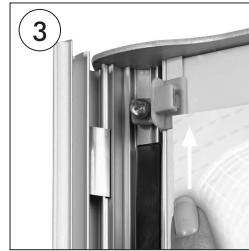
• ASSEMBLY OF POSTER



- Open all profiles upwards.



- Take-off the anti-reflex cover.



- Slide poster by rubbing it passed into clips on corners as is in photo.



- After placing the cover back on the poster, close the profiles downwards.

