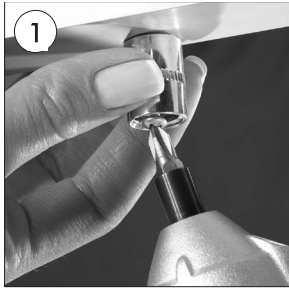
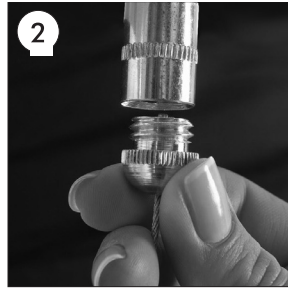


Ceiling Mount Snap Frame SNAP OPEN FRAME



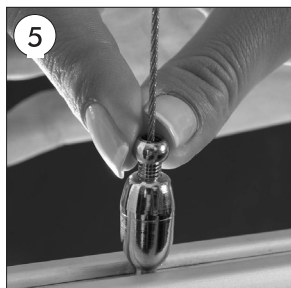
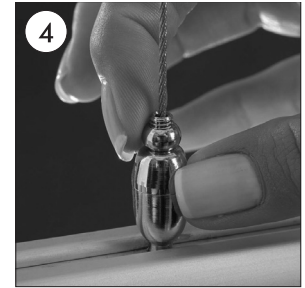
1
•Fasten up the top part of the hanger by screwing to the point on which you will hang the poster.



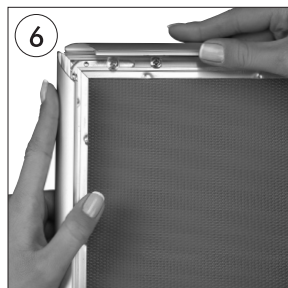
2
•Connect the hanger on the other side of the wire by screwing, to the top hanger which you have already fastened up.



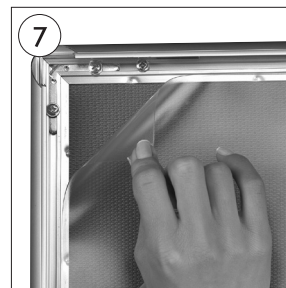
3
•Fix in the stopper accessory in the hole of the top short side.



5
•Fix the wire by screwing the small turnscrew.



6
•Open all profiles upwards.



7
•Take-off the anti-reflex cover. Place in the poster. After placing the cover back on the poster, close the profiles downwards.



•Cross section view for double sided.

