

LA CROSSE®
TECHNOLOGY

Curved Digital Atomic **Wall Clock** with Moon Phase



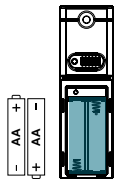
SET UP GUIDE

MODEL: BBB86118v3 / BBB86118v4

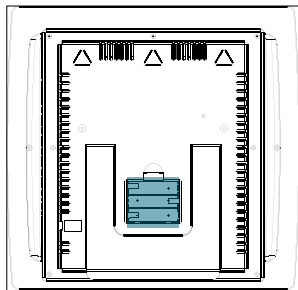
Power Up

1. Insert 2-AA batteries into your Outdoor Sensor.
2. Insert 3-AA batteries Into your Atomic Clock.
3. Enter the Settings Menu to adjust your time and date.
4. Once the sensor is reading to your clock, place the sensor outside in a shaded location. View our sensor mounting video here:

bit.ly/th_sensor_mounting



Outdoor Sensor
TX141-Bv3 or
TX141-Bv4



Atomic Clock
BBB8611v3 or
BBB8611v4

Atomic Time

- The clock will search for the Atomic Time Signal at power up and at UTC 7:00, 8:00, 9:00, 10:00, and 11:00.
- The Atomic Time Signal Icon (📶) will flash while searching and be solid when it has connected.
- From the normal time display, press the **SEARCH** button to manually start or stop a search for the WWVB time signal. For information about WWVB visit: bit.ly/AtomicTime

Settings Menu

1. Hold the **SET** button to enter the Settings Menu.
2. Use the **+/-** buttons to adjust values.
3. Press **SET** to confirm values.
4. Press the **SNOOZE** button at any time to save and exit.

Settings Menu Order:

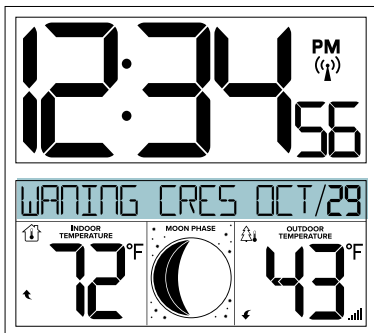
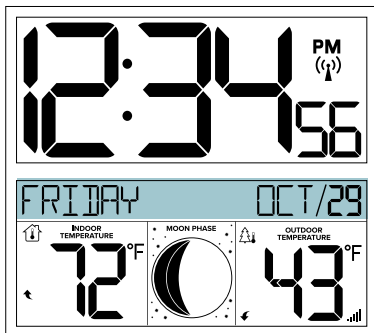
- Beep ON/OFF
 - Atomic ON/OFF
 - DST AUTOMATIC/ DST ALWAYS OFF / DST ALWAYS ON
(Change Spring/Fall) (Standard Time all year) (DST all year)
 - Time Zone
 - Hour
 - Minutes
 - Year
 - Month
 - Date
 - Temperature Fahrenheit/Celsius
- | | TIME ZONE |
|--|------------------|
| | ATLANTIC |
| | EASTERN |
| | CENTRAL |
| | MOUNTAIN |
| | PACIFIC |
| | ALASKA |
| | HAWAII |

Notes:

- If Atomic OFF is selected, menu will skip DST and Time Zone settings and move straight to the Hour setting.
- Weekday sets automatically when Year, Month and Date are set.

Custom Display

Press the **MOON** button to switch between Calendar or Moon Phase.
Your clock will stay on the selection.



Moon Phase

- The moon phase is based on the Lunar Calendar and the year, month, and date settings.
- Due to character limitations on the clock; Large and Small Waxing and Waning Phases will not state Large or Small.

Phase / Clock Reads



New Moon



Small Waxing Crescent



Large Waxing Crescent



First Quarter

NEW MOON

Phase / Clock Reads



Small Waxing Gibbous



Large Waxing Gibbous



Full Moon



Large Waning Gibbous

WAXING GIBB

WAXING GIBB

FULL MOON

WANING GIBB

Phase / Clock Reads



Small Waning Gibbous



Last Quarter



Large Waning Crescent



Small Waning Crescent

WANING GIBB

LAST QTR

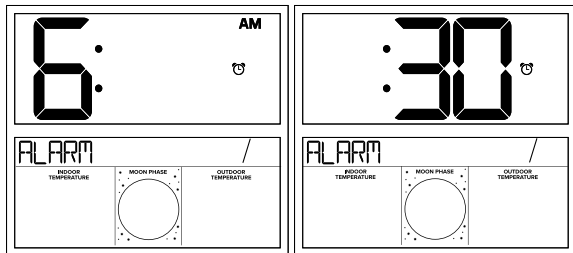
WANING CRES

WANING CRES

Time Alarm


Set Alarm:

1. Hold the **ALARM** button to enter Alarm Settings.
2. Use the **+/-** buttons to adjust values.
3. Press the **ALARM** button to confirm and move to next item.



Silence a sounding alarm: Press any button except SNOOZE to silence the alarm for 24 hours.

Activate/Deactivate Alarm:

- Press the **ALARM** button to activate or deactivate the alarm.
- The Alarm Icon  will show when alarm is active.

Snooze:

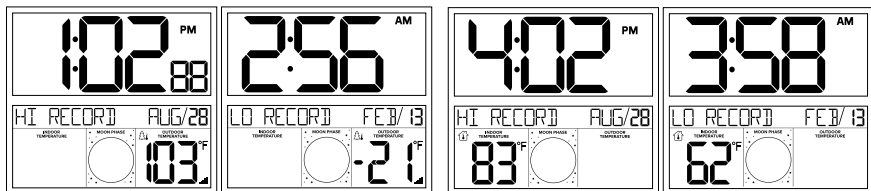
- When the alarm sounds, press the **SNOOZE** button to silence the alarm for 10 minutes. Zz will show.

Note: The alarm will sound with increasing frequency for two minutes, then shut off automatically if not silenced.

HI/LO Temperature Records

View: Press the + button to view Outdoor, then Indoor Temperature HI and LO Records with time and date stamps.

Reset: While viewing individual records, hold the - button to reset to current temperatures.



Temperature Trend Arrows

Both the Indoor and Outdoor temperature have Trend Arrows to indicate temperature changes (2°F / 1°C) over the past one hour period.




Temperature has risen over the past hour.

Temperature has been steady over the past hour.

Temperature has fallen over the past hour.

Search for Outdoor Temperature

If you are seeing NO or dashes for your outdoor readings, please try the following steps:

1. Hold the **SEARCH** button to search for your outdoor sensor. The Reception Indicator  will begin to animate.
2. If after 3 minutes the sensor still isn't connected, bring the sensor inside next to the display and remove power from both the sensor and clock.
3. Press any button on the clock 20 times and leave the parts sit for a few moments with the power off.
4. Install a new set of alkaline batteries into the sensor, then into your clock. For additional help visit: bit.ly/basic_restart
5. If your outdoor data is still not appearing after these steps, please contact our support staff via the links below.

We're Here to Help

If you require additional support, get in touch with our friendly customer support team based in La Crosse, WI.

Phone: 1.608.782.1610

Online: bit.ly/contact_techsupport

Our knowledgeable customer support team is available:
Mon-Fri 8am-6pm CST

Stay in Touch

Ask questions, watch setup videos, and provide feedback on our social media outlets.



Follow La Crosse Technology on YouTube, Twitter, Facebook and Instagram.

Low Battery Indicator

- By the Time, replace clock batteries.
- By the Outdoor Temperature, replace sensor batteries.

Care + Maintenance

- Do not mix old and new batteries.
- Do not mix Alkaline, Lithium, standard, or rechargeable batteries.
- Always purchase the correct size and grade of battery most suitable for intended use.
- Clean the battery contacts and also those of the device prior to battery installation.
- Ensure the batteries have been installed with correct polarity (+/-).
- Remove batteries from equipment that will not be used for an extended period.
- Promptly remove expired batteries.

Specifications

Atomic Clock (BBB86118v3 or BBB86118v4)

- **Temperature Range:**
32°F to 122°F (0°C to 50°C)
- **Power Requirements:**
3-AA, IEC, LR6 batteries (not included)
- **Dimensions:**
12.19" W x 1.59" D x 11.80" H
(30.96 W x 4.04 D x 29.98 H cm)

Outdoor Sensor (TX141-Bv3 or TX141-Bv4)

- **Temperature Range:**
-40°F to 140°F (-40°C to 60°C)
- **Transmission Range:** Over 330 ft. open air
(100 meters) RF 433MHz
- **Update Interval:** About every 51 seconds
- **Power:** 2-AA, IEC, LR6 batteries (not included)
- **Battery Life:** Over 12 months
- **Dimensions:**
1.57" L x 0.79" W x 5.12" H
(4.0cm L x 2.0cm W x 13.0 H cm)

Warranty Info

La Crosse Technology, Ltd. provides a **1-year limited time warranty** (from date of purchase) on this product relating to manufacturing defects in materials & workmanship.

La Crosse Technology, Ltd,
2830 S. 26th St.
La Crosse, WI 54601

For Full Warranty Details, Visit:

www.lacrossetechnology.com/pages/warranty



WARNING:

This product can expose you to chemicals including styrene, which is known in the State of California to cause cancer.

For more information, go to:

www.P65Warnings.ca.gov

Canada Statement

This device contains licence-exempt transmitter(s)/receiver(s) that comply with Innovation, Science and Economic Development Canada's licence-exempt RSS(s). Operation is subject to the following two conditions:

- (1) This device may not cause interference.
- (2) This device must accept any interference, including interference that may cause undesired operation of the device.

L'émetteur/récepteur exempt de licence contenu dans le présent appareil est conforme aux CNR d'Innovation, Sciences et Développement économique Canada applicables aux appareils radio exempts de licence. L'exploitation est autorisée aux deux conditions suivantes :

- 1) L'appareil ne doit pas produire de brouillage;
- 2) L'appareil doit accepter tout brouillage radioélectrique subi, même si le brouillage est susceptible d'en compromettre le fonctionnement.

FCC Statment

This equipment has been tested and found to comply with the limits for a Class B digital device, pursuant to part 15 of the FCC Rules. These limits are designed to provide reasonable protection against harmful interference in a residential installation. This equipment generates, uses and can radiate radio frequency energy and, if not installed and used in accordance with the instructions, may cause harmful interference to radio communications. However, there is no guarantee that interference will not occur in a particular installation. If this equipment does cause harmful interference to radio or television reception, which can be determined by turning the equipment off and on, the user is encouraged to try to correct the interference by one or more of the following measures:

- Reorient or relocate the receiving antenna.
- Increase the separation between the equipment and receiver.
- Connect the equipment into an outlet on a circuit different from that to which the receiver is connected.
- Consult the dealer or an experienced radio/TV technician for help.

This device complies with Part 15 of the FCC Rules. Operation is subject to the following two conditions:

- (1) This device may not cause harmful interference, and
- (2) This device must accept any interference received, including interference that may cause undesired operation.

Caution!

Any changes or modifications not expressly approved by the party responsible for compliance could void the user's authority to operate the equipment.

All rights reserved. This manual may not be reproduced in any form, even in part, or duplicated or processed using electronic, mechanical or chemical process without the written permission of the publisher.

This booklet may contain errors or misprints. The information it contains is regularly checked and corrections are included in subsequent editions. We disclaim any responsibility for any technical error or printing error, or their consequences. All trademarks and patents are recognized.



LA CROSSE®
TECHNOLOGY

