

## WARRANTY INFO

La Crosse Technology, Ltd. provides a **1-year limited time warranty** (from date of purchase) on this product relating to manufacturing defects in materials & workmanship.

La Crosse Technology, Ltd, 2830 S. 26th St., La Crosse, WI 54601

For Full Warranty Details, Visit: [bit.ly/lacrosse\\_warranty](http://bit.ly/lacrosse_warranty)

Patents: [www.lacrossetechnology.com/pages/patents](http://www.lacrossetechnology.com/pages/patents)

## CARE + MAINTENANCE

### Battery replacement instruction:

When batteries of different brand or type are used together, or new and old batteries are used together, some batteries may be over-discharged due to a difference of voltage or capacity. This can result in venting, leakage, and rupture and may cause personal injury.

- Always purchase the correct size and grade of battery suitable for the intended use.
- Always replace the whole set of batteries at one time, taking care not to mix old and new ones, or batteries of different types.
- Clean the battery contacts and those of the device prior to battery installation.
- Ensure the batteries are installed correctly with regard to polarity (+ and -).
- Remove batteries from product during periods of non-use. Battery leakage can cause corrosion and damage to this product.
- Remove used batteries promptly.
- For recycling and disposal of batteries, and to protect the environment please check the internet or your local phone directory for local recycling centers and / or follow local government regulations.

### CA WARNING:

This product can expose you to chemicals including acrylonitrile, butadiene, and styrene, which are known to the State of California to cause cancer and birth defects or other reproductive harm.

For more information, go to: [www.P65Warnings.ca.gov](http://www.P65Warnings.ca.gov)

LA CROSSE®  
TECHNOLOGY

# 12.8 INCH ATOMIC WALL CLOCK



Model: 404-50447

DC: 092823

Page 11

## POWER UP

1. Select Time Zone and DST settings.
2. Insert 1 AA battery into the Battery Compartment.
3. The hands will move to the 12 o'clock position and search for the WWVB Atomic Time Signal for up to 8 minutes.
  - If no signal, after 8-10 minutes, clock will run from 12:00.
  - Clock will continue to search for the WWVB Atomic Time Signal. Allow up to 5 nights for the clock to receive this transmission.
4. For the best reception, place the clock on an exterior wall near a window with the front or back of it facing Fort Collins, CO.

Watch the setup video: [bit.ly/wallclock\\_setup](https://bit.ly/wallclock_setup)

**Note:** In certain areas, this clock may not be able to receive the WWVB reception due to signal strength or interference. In this case, your clock can be set manually until the Atomic Time Signal can be received.

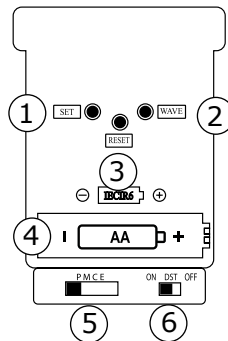
For information about WWVB, Atomic Time Signal visit: [bit.ly/atomic\\_time](https://bit.ly/atomic_time)

## MANUAL SET TIME

### Set Time:

1. Hold SET for 3 seconds to manually set your time.
  - Press and hold SET again to move hands quickly.
  - Press and release SET to move hands forward step by step.

**Note:** The Atomic Time Signal will override your manual setting if the transmission is received in the future.



- ① SET
- ② WAVE (Atomic search)
- ③ RESET
- ④ Battery
- ⑤ Time Zone Selector
- ⑥ Daylight Saving Time Selector

## RESET BUTTON

- If the clock does not respond when trying to manually set your time, press the RESET button one time.
- The hands will move to the 12 o'clock position and begin searching for the WWVB Signal again.

## LET'S BE SOCIAL!

Ask questions, watch detailed setup videos, and provide feedback on our social media outlets!



## SPECIFICATIONS

**Battery Requirements:** 1 AA (IEC LR6) required in movement  
Battery not included.

**Battery Life:** 12 months

**Dimensions:** 12.8" Diameter x 1.77" Deep