



WIRELESS COLOR FORECAST STATION



Model: 308-1425Bv2
DC: 090518

Table of Contents

INITIAL SETUP.....	3
LCD FEATURES	4
BUTTONS	4
▼ (Down) Button	4
TIME SET Button	4
SNOOZE/LIGHT (HI-LOW-OFF) Button.....	5
HEAT/DEW/SENSOR SEARCH button.....	5
▲ (UP) Button.....	5
ALERT Button.....	5
ALARM Button.....	5
SET TIME, DATE, ETC.	6
BACKLIGHT (HI/LO/OFF).....	7
MOON PHASE.....	7
ANIMATED COLOR FORECAST ICONS	7
FORECAST TENDENCY INDICATORS	8
24 HOUR PRESSURE HISTORY GRAPH	8
TEMPERATURE ALERTS	8
ARM/DISARM TEMPERATURE ALERTS	9
TEMPERATURE ALERT SOUNDS.....	9
SEARCH FOR OUTDOOR SENSOR.....	9
MAX/MIN TEMPERATURES.....	10
HEAT INDEX/DEW POINT	10
TEMPERATURE TREND ICONS.....	10
MANUAL WWVB RADIO-CONTROLLED TIME SEARCH.....	11
TIME ALARM	11
DEACTIVATE TIME ALARM	11
SNOOZE	11
POSITION THE FORECAST STATION	12
POSITION OUTDOOR SENSOR.....	12
CARE AND MAINTENANCE.....	12

SPECIFICATIONS 12

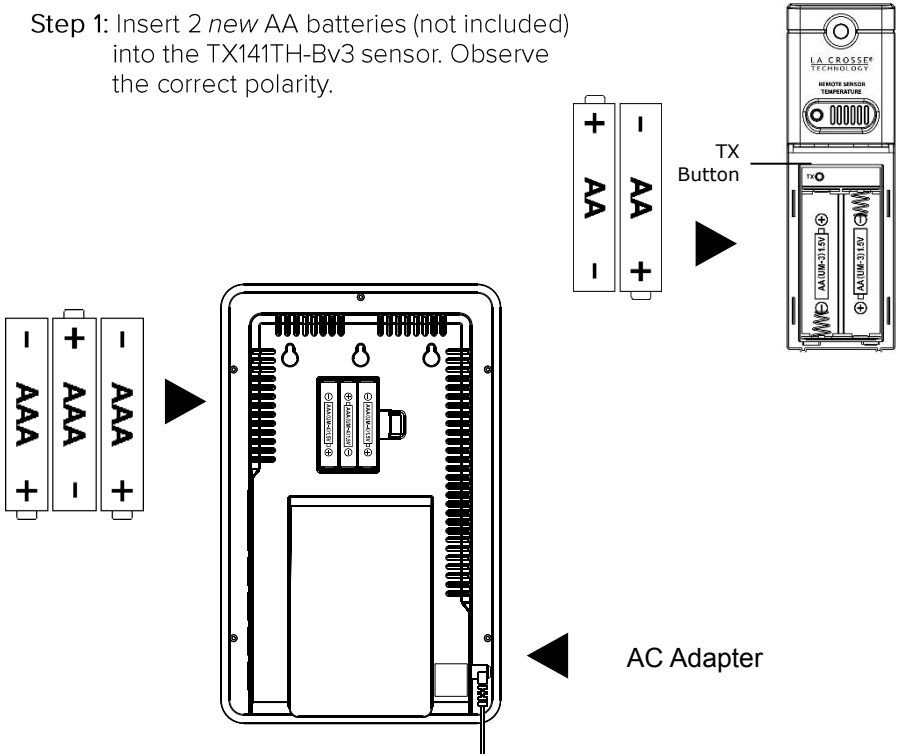
LOW BATTERY ICON..... 13

WARRANTY AND SUPPORT INFORMATION..... 13

FCC STATEMENT 14

INITIAL SETUP

Step 1: Insert 2 new AA batteries (not included) into the TX141TH-Bv3 sensor. Observe the correct polarity.



Step 2: Insert the 5.0 volt AC adapter (included) into the forecast station.

Step 3: (Optional) Insert 3 AAA batteries (not included) into the forecast station.

Step 4: After 5 minutes, place the sensor outside in a shaded location. Maximum transmission range is 300 ft. (91 meters).

Note: If the outdoor temperature area shows dashes after 3 minutes, hold the HEAT/DEW button on the weather station to search for the sensor. Press the TX button on the sensor to send a signal.

LCD FEATURES



BUTTONS

▼ (Down) Button

Setting-

- Press to decrease values during setting.
- Hold 2 seconds to quickly adjust values.

Default Time Display-

- Press to display minimum temperature/humidity.
- Hold 2 seconds to clear minimum temperature/humidity memory.

Temperature Alert-

- Press to disarm alerts

TIME SET Button

Default Time Display-

- Press to start or stop a WWVB time signal search
- Hold for 3 seconds to set time/calendar, etc.

SNOOZE/LIGHT (HI-LOW-OFF) Button

Default Time Display-

- Press to change the LCD backlight brightness. HI/LOW/OFF
- Press to activate backlight for 10 seconds (without adaptor).

Time Alarm-

- Press to activate the snooze function when alarming

HEAT/DEW/SENSOR SEARCH button

Default Time Display-

- Press once to view Heat Index.
- Press twice to view Dew Point.
- Hold to search for Outdoor sensor.

▲ (UP) Button

Setting-

- Press to increase the values during setting.
- Hold 2 seconds to quickly adjust values.

Default Time Display-

- Press to view maximum temperature/humidity.
- Hold 2 seconds to clear maximum temperature/humidity memory.

Temperature Alert-

- Press to arm alerts

ALERT Button

Default Time Display-

- Press to toggle between Outdoor High Alert, Outdoor Low Alert, Indoor High Alert and Indoor Low Alert.
- Hold to enter Alert setting

ALARM Button

Default Time Display-

- Press once to show alarm time
- Hold for 2 seconds enter alarm setting mode

Alarm Mode-

- Press to activate or deactivate time alarm.

SET TIME, DATE, ETC.

1. Hold the **TIME SET** button to enter time set mode.
2. Press the **▲** or **▼** button to adjust values.
3. Press the **TIME SET** button to confirm adjustments and move to the next item.

Settings order:

1. WWVB Reception
2. Time Zone
3. DST Indicator,
4. 12/24 Hour Time Format
5. Hour
6. Minutes,
7. Year
8. Month
9. Date
10. Fahrenheit/Celsius

TIME ZONE	
AST	Atlantic
EST	Eastern
CST	Central
MST	Mountain
PST	Pacific
AKT	Alaska
HAT	Hawaiian

WWVB Time On/Off

Time Zone



DST ON/OFF

12/24 Time Format



Hours

Minutes



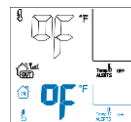
Year

Month



Date

Fahrenheit/Celsius



Press the **TIME SET** button to exit or wait 20 seconds.

BACKLIGHT (HI/LO/OFF)

When using A/C power (for constant light):

- Press the HI/LOW/OFF button to adjust the backlight.

When using battery power only:

- Press the HI/LOW/OFF button for 10 second backlight.

MOON PHASE

The Moon phase is based on the lunar calendar.

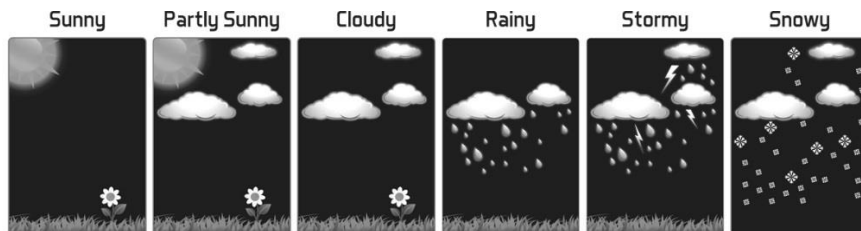


ANIMATED COLOR FORECAST ICONS

Animated forecast icons use changing atmospheric pressure to predict weather conditions for the next 12-hours with 70-75% accuracy.

INTELLIGENT WEATHER FORECAST

This station learns; please allow 7-10 days for barometric calibration. This will ensure an accurate personal forecast for your location.




- The forecast station samples the barometric pressure every twelve minutes.
- These samples are averaged hourly and daily then stored in nonvolatile memory.
- The three hour pressure icon change is based off of the last four average hourly readings.

The icons forecast the weather in terms of getting better or worse and not necessarily sunny or rainy as each icon indicates.

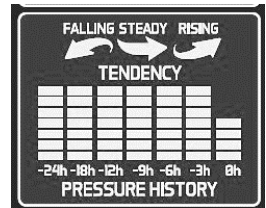
FORECAST TENDENCY INDICATORS

Working with the forecast icons, the tendency indicators let you know if the weather is improving, steady or worsening.

<p style="text-align: center;"> TENDENCY Rising Pressure Weather is Expected to Improve</p>	<p style="text-align: center;"> TENDENCY Steady Pressure Weather is Expected to Stay the Same</p>	<p style="text-align: center;"> TENDENCY Falling Pressure Weather is Expected to Worsen</p>
---	---	---

24 HOUR PRESSURE HISTORY GRAPH

- The bar chart indicates the air pressure history trend over the last 24 hours.
- The columns represent the pressure change (“InHg” or “hPa”) readings at specific times.
- The “0” is equal to the current pressure and each bar represents how past pressure was **compared** to the current pressure.
- Read the graph from left to right. If the bars are rising, it means that the weather is getting better due to the increase of air pressure.
- If the bars go down, it means the air pressure has dropped and the weather is expected to get worse from the present time.



TEMPERATURE ALERTS

The forecast station offers individual, programmable high and low temperature alerts.

Hold the **ALERT** button for five seconds, until the forecast station beeps, to select and set temperature alert values. Each alert value will flash separately during alert set mode.

- **OUTDOOR HIGH** alert will flash. Press the ▼ or ▲ buttons to set the alert value, and press the ALERT button to confirm. Then press the ALERT button again switch to OUTDOOR LOW setting.
- **OUTDOOR LOW** alert will flash. Press the ▼ or ▲ buttons to set the alert value, and press the ALERT button to confirm. Then press the ALERT button again switch to INDOOR HIGH setting.

- **INDOOR HIGH** alert will flash. Press the ▼ or ▲ buttons to set the alert value, and press the ALERT button to confirm. Then press the ALERT button again switch to INDOOR LOW setting.
- **INDOOR LOW** alert will flash. Press the ▼ or ▲ buttons to choose the value, and press the ALERT button to confirm and exit.

Note: After selecting temperature alert values use the next step to turn individual alerts ON or OFF.

ARM/DISARM TEMPERATURE ALERTS

- In normal time mode, press and release the **ALERT** button to toggle between:
 - Outdoor HI
 - Outdoor Lo
 - Indoor HI
 - Indoor LO



- Press the ▲ button to **arm** the selected alert.
- The alert bell appears when each alarm is activated.
- Press the ▼ button to **disarm** the selected alert.
- OFF will show in the Alerts area if no alert is active.

TEMPERATURE ALERT SOUNDS

- When temperature alert sounds, the corresponding alert bell will flash.
- The alert beeps once every minute, until the temperature is out of alert range.
- Press any button to stop alert. The alert bell will still show.
- **Disarm Alert:** In normal mode, hold and release the ALERT button to select the alert to disarm. With HI or LO alert selected, press the ▼ button disarm alert.

SEARCH FOR OUTDOOR SENSOR

- Hold the HEAT/DEW button to search for the outdoor sensor.
- The strength signal icon will animate until the sensor signal is received or for 3 minutes if no signal available.



MAX/MIN TEMPERATURES

The Forecast station provides the daily minimum and maximum temperatures each day starting at midnight (12:00 AM). The Forecast station automatically resets the min/max temperatures at midnight (12:00 AM).

View MIN data: Press and release the ▼ button to view the minimum Indoor and Outdoor Temperatures.

Reset MIN data: Hold the ▼ button for five seconds and the Indoor and Outdoor Minimum Temperatures will be reset.

View MAX data: Press and release the ▲ button to view the maximum Indoor and Outdoor Temperatures.

Reset MAX data: Hold the ▲ button for five seconds and the Indoor and all Outdoor Maximum Temperatures will be reset.

Note: The temperature areas will show dashes briefly then return to current temperatures.

HEAT INDEX/DEW POINT

The HEAT/DEW button toggles between Heat Index, Dew Point, and Mold Risk. Each feature will display for 10 seconds then return to default display if the button is not pressed again.

View Heat Index: From a normal display, press the HEAT/DEW button once and Heat Index will show in place of the outdoor temperature.

Note: Heat index will be the same number as the temperature until the outdoor temperature is above 80 °F (26.7°C).

View Dew Point Temperature: From a normal display, press the HEAT/DEW button twice and Dew Point will show place of the outdoor temperature.

Note: Dew Point is lower than the actual temperature.

TEMPERATURE TREND ICONS

The temperature (2°F/1°C) and humidity (3% RH) trend indicators update every 30 minutes or less.

- Temperature has risen in the past 3 hours.
- Humidity has risen in the past 3 hours.



- Temperature has not changed in the past 3 hours.
- Humidity has not changed in the past 3 hours.



- Temperature has fallen in the past 3 hours.
- Humidity has fallen in the past 3 hours.



MANUAL WWVB RADIO-CONTROLLED TIME SEARCH

- Hold the **TIME SET** button to start or stop a WWVB signal search.
- WWVB Icon will flash



For information about WWVB visit:

www.nist.gov/pml/div688/grp40/wwvb.cfm

TIME ALARM

Hold the **ALARM** button for 5 seconds to enter the alarm time set mode.

1. The alarm hour digit will flash in the time display.
2. Press and release the ▼ or ▲ buttons to select the hour.
3. Press and release the ALARM button to set the minutes. The minute digits will flash.
4. Press and release the ▼ or ▲ buttons to select the minutes.
5. Confirm with the ALARM button and exit.
6. The bell icon will show indicating the alarm is active.
7. The bell icon will flash when the alarm is sounding.

DEACTIVATE TIME ALARM

1. Press and release the ALARM button once to show alarm time.
2. Press and release the ALARM button to deactivate the Alarm.
3. The bell icon will disappear indicating the alarm is no longer active.



SNOOZE

1. When the alarm sounds, press the SNOOZE/LIGHT button to trigger snooze alarm for 10 minutes. The snooze icon Zz will flash by the weekday when the snooze feature is active.
2. To stop alarm for one day, press ALARM button, while in snooze mode. The bell icon will remain solid.

Note: When the alarm sounds, it continues for 2 minutes and then shuts off completely.

POSITION THE FORECAST STATION

The forecast station has a wide base to sit on a desk or table.

- For best WWVB reception orientate the forecast station with the front of the back facing Ft. Collins, Colorado.
- Choose a location 6 feet or more from electronics such as cordless phones, gaming systems, televisions, microwaves, routers etc.
- Place within range of the outdoor sensor.
- The maximum transmitting range in open air is 300 feet (91 meters). Obstacles such as walls, windows, stucco, concrete and large metal objects can reduce the range.

POSITION OUTDOOR SENSOR

- Mount the outdoor sensor on a north-facing wall or in any well shaded area. Under an eave or deck rail is preferred.
- The maximum transmitting range to the forecast station is over 300 feet (91 meters) in open air, not including walls.

CARE AND MAINTENANCE

- Do not mix old and new batteries.
- Do not mix Alkaline, Standard, Lithium, or Rechargeable Batteries.
- Always purchase the correct size and grade of battery suitable for the intended use.
- Replace all batteries of a set at the same time.
- Clean the battery contacts and also those of the device prior to battery installation.
- Ensure the batteries are installed correctly with regard to polarity (+and -).
- Remove batteries from equipment when it is not to be used for an extended period.
- Promptly remove expired batteries.

SPECIFICATIONS

Indoor:

Temperature Range: +32°F to +122°F (0°C to 50°C)

Humidity Range: 10%-99% (RH)

Interval: About every 30 seconds

Outdoor:

Temperature Range: -40°F to 140°F (-40°C to 60°C)

Alkaline Batteries: -20°F to 140°F (-28.8°C to 60°C)

Lithium Batteries: -40°F to 140°F (-40°C to 60°C)

Note: Temperatures below - 20°F (-28.8°C) require Lithium batteries in the outdoor sensor.

Humidity Range: 10%-99% (RH)

Distance: Over 330 ft. (100 meters), RF 433MHz (open air)

Interval: About every 50 seconds

Power:

Primary AC Power: AC6#: GPU280500150WA00

5.0 Volt 150mA adapter included

Optional: 3-AA, IEC, LR6 batteries (not included)

TX141TH-Bv3 Sensor: 2-AA, IEC, LR6 batteries (not included)

Battery Life: Battery life is over 24 months when using reputable batteries.

Dimensions:

Forecast Station: 6.16" W x 9.65" H x 0.925" D (156.5 x 245.1 x 23.5 mm)

TX141TH-Bv3 Sensor: 5.11" H x 1.57" W x 0.82" D (129.8 x 40 x 20.8 mm)

LOW BATTERY ICON

- When displayed in Outdoor Temperature section, replace batteries in the outdoor sensor.
- When displayed in Indoor Temperature section, replace batteries in the forecast station.



WARRANTY AND SUPPORT INFORMATION

La Crosse Technology, Ltd. provides a 1-year limited time warranty (from date of purchase) on this product relating to manufacturing defects in materials & workmanship.

Before returning a product, please contact our friendly customer support with questions or visit our online help:

Phone: 1-608-782-1610

Online Product Support and Registration:

www.lacrossetechnology.com/support

FCC STATEMENT

This equipment has been tested and found to comply with the limits for a Class B digital device, pursuant to part 15 of the FCC Rules. These limits are designed to provide reasonable protection against harmful interference in a residential installation. This equipment generates, uses, and can radiate radio frequency energy, and if not installed and used in accordance with the instructions, may cause harmful interference to radio communications. However, there is no guarantee that interference will not occur in a particular installation. If this equipment does cause harmful interference to radio or television reception, which can be determined by turning the equipment off and on, the user is encouraged to try to correct the interference by one or more of the following measures:

- Reorient or relocate the receiving antenna.
- Increase the separation between the equipment and receiver.
- Connect the equipment into an outlet on a circuit different from that to which the receiver is connected.
- Consult the dealer or an experienced radio/TV technician for help.

This device must not be co-located or operating in conjunction with any other antenna or transmitter.

Operation is subject to the following two conditions:

- (1) This device may not cause harmful interference, and
- (2) This device must accept any interference received, including interference that may cause undesired operation.

Caution!

The manufacturer is not responsible for any radio or TV interference caused by unauthorized modifications to this equipment. Such modifications could void the user authority to operate the equipment.

All rights reserved. This manual may not be reproduced in any form, even in part, or duplicated or processed using electronic, mechanical or chemical process without the written permission of the publisher. This booklet may contain errors or misprints. The information it contains is regularly checked and corrections are included in subsequent editions. We disclaim any responsibility for any technical error or printing error, or their consequences. All trademarks and patents are recognized.