



TRADE SHOWS

London Fashion Week Exhibition

SUE HUEY & KATHRYN KENNY, WGSN 30.09.09

Spring/summer 2010, September 18-22 2009, Somerset House, London

Apparel Designer highlights Footwear and accessory brands Trends

Footwear and accessory brands

Click to access: Ally Capellino, Angel Jackson, Ericson Beamon, Dr Martens, Fiona Paxton, Fred Butler, Louise Gray, Maria-Francesca Pepe, Mary Katrantzou, Michael Lewis, Mini Market, Nicholas King, Opening Ceremony, St.Erasmus, Zoe and Morgan

Ally Capellino



Ally Capellino

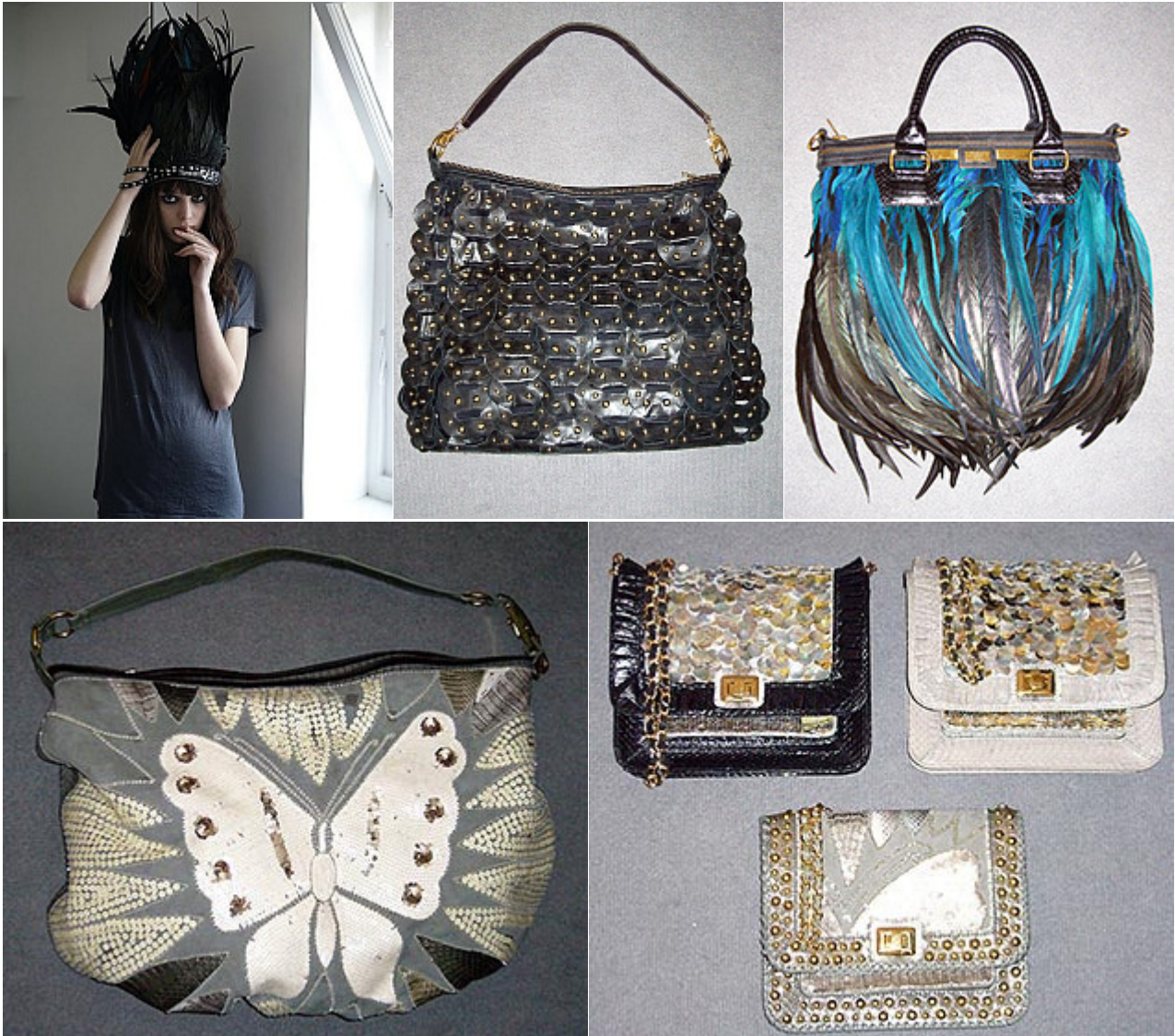
- Spring/summer 2010 marks the 30th anniversary of the brand.
- **Since its launch in 1980, Capellino's has built up a faithful and discerning customers who looks to the brand for its understated modernity.**
- Inspired by traditional Cornish chandlery the new collection features **bucket bag silhouettes, rope handles and waxed canvas in traditional fishing colours.**

Contact

www.allycapellino.co.uk

[Back to top](#)

Angel Jackson



Angel Jackson

- Launched in 2005 by sisters Katie and Millie Smith, the siblings have succeeded in creating a brand that is both stylish yet ethically sound.
- **New materials for spring/summer 2010 include hand-stitched sequins, studs, mother of pearl discs, feathers and snakeskin leathers a signature materials for the brand.**
- Available in some of the worlds most prestigious stores and boutiques. Stockists include, Harrods, Fenwick, Brown Thomas, Henri Bendel and Galeries Lafayette.

Contact

www.angeljackson.co.uk

[Back to top](#)

Erickson Beamon



Erickson Beamon

- **From Art Deco to medieval knights and Massai tribes, inspiration comes from an array of influences and historical references for spring/summer 2010.**
- **Schiaparelli Pink** references the whimsical designs of Elsa Schiaparelli and mixes shocking pink stones with yellow gold plated metal.

L'age d'or (Golden Age) features large geometric structures while **El Morocco** combines pearls, antique gold plated metal and a mix of red Lucite, coral and abalone shell.

- Warrior style chainmail, metal spikes, crystal mesh and leather create a harder edged feel.
- In contrast Erickson Beamon have also collaborated with **Made**, the ethical brand that creates inspirational accessories with a conscience. Collections include **Maasai Mara and Kikuyu** and include the Signature Erickson Beamon styles such as a the regal choker and chandelier earrings but recreated in Massai-style beading.

Contact

www.ericksonbeamon.com

[Back to top](#)

Dr Martens



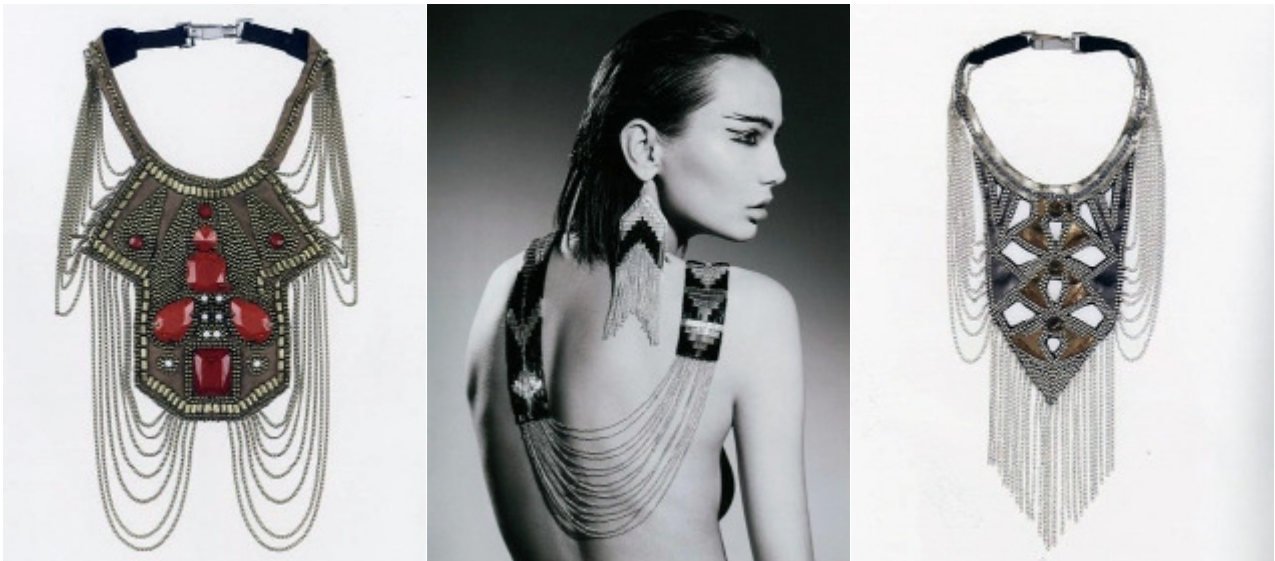
Dr Martens

- Referencing the traditional 1930s-style English shoe, the **Dr Martens for Raf Simons** collection is divided into two key looks
- **The leather series** for those seeking the classic look features a monk shoe, tasselled loafer more clean styles while the **metallic series**, inspired by American Minimalist **Carl Andre**, encompasses Raf Simons' true directional design ethos.
- The range will be available through London stores, and selected Raf Simons stockists across the globe.

Contact

www.drmartens.com

[Back to top](#)

Fiona Paxton



Fiona Paxton

- Fiona Paxton launched her jewellery brand in 2008 having previously worked at Michiko Koshino, Chlo , Armani and Moschino.
- **Inspired by the artisan techniques of embroidery craftsmen in India, she develop a range of hand embellished jewellery pieces using these ancient skills.**
- Intricately designed Paxton's creations resemble beaded mosaics of silver and gold coloured chains beads and semi-precious stones.
- **The designer presents a harder edged look for spring/summer 2010 incorporating chainmail and leather to create bigger statement pieces.**

Contact

www.fiona-paxton.com

[Back to top](#)

Fred Butler



Fred Butler



Fred Butler

- In true Fred Butler style the new spring/summer 2010 collection **Hibiscus Ridiculous** creates a sense of theatre and extravagance with her vibrant mix of colour and print.
- **Complex origami structures are combined with light transforming plastics with a holographic quality** to create oversized body armour and statement headpieces as well as smaller more intricate styles for everyday wear.

Contact

www.fredbutlerstyle.com

[Back to top](#)

Louise Gray



Louise Gray

- Now in her second season Louise Gray's latest collection **Oh No Baby** is inspired by the young and wild spirit of London in the 80s and 90s citing the work of **Keith Haring and artist Bram Bogart**.
- **Judy Blame** has created the accessories for Gray in true Blame style, customising rucksacks with randomly found object and shoes by Nicholas Kirkwood with trash bags florals.

www.louisegraylondon.com

[Back to top](#)

Mary Katrantzou





Mary Katrantzou

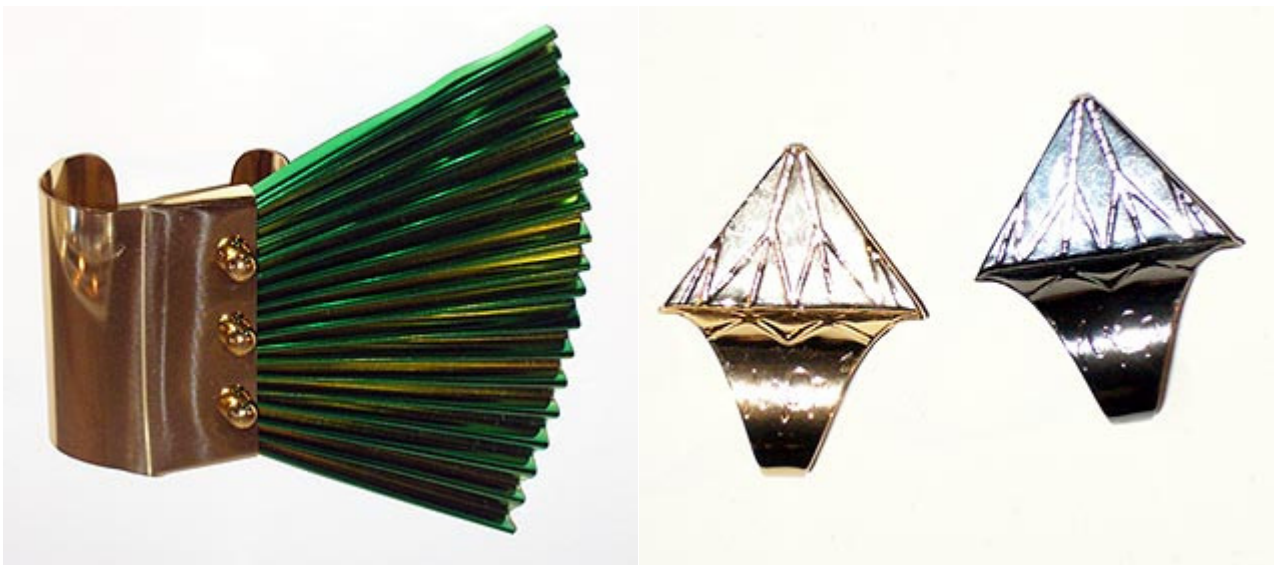
- Greek born designer Mary Katrantzou recognised for her signature vibrant prints has also created a **small jewellery collection of Art Deco-style pieces to sit along side the apparel collection.**
- Blown glass cuffs and neckpieces are combined with heavy brass and silver metal to create beautiful statement jewellery.

Contact

www.marykatrantzou.com

[Back to top](#)

Maria Francesca Pepe



Maria Francesca Pepe



Maria Francesca Pepe

- Presenting her apparel and accessory lines together for the first time this season Maria Francesca Pepe's new collection **Bathing Beauties is inspired by water.**
- The collection features pleated fin-like jewellery in aqua blues and iridescent greens, while pointed studs take on a post punk aesthetic.
- The signature **Tubulars** are reinvented with diamond encrusted effects while headbands are inspired by 30s swimming caps and covered in crystals.

Contact

www.mfpepe.com

[Back to top](#)

Michael Lewis



Michael Lewis

- Having previously designed for the likes of Burberry, Louis Vuitton, Gucci and Charles de Castelbajac, Michael Lewis's collection is both opulent and decadent.
- **Taking inspiration from the world of folklore in particular the Russian Baboushka story** Lewis also references the books of Hans Christian Andersen and Guillermo Del Toro's phantasmagorical Pan's labyrinth.
- **Lewis' play on contrasts combines matt suedes with high shine patent leathers.** While focusing on decorative detailing such as whip-stitching, moulded platforms and nipped in heels.

Contact

www.michaellewislondon.com

[Back to top](#)

Mini Market



Mini Market

- Bold and brightly coloured the Mini Market shoe line is designed to complement the apparel collection.

- **The brand's whimsical style verges on the surreal with clam-style ballerinas and covered wedge heel boots.**
- Other styles include mid height suede lace ups with stacked wooden heels and Wooden wedges.

Contact

www.minimarket.se

[Back to top](#)

Nicholas King



Nicholas King

- Debuting at London Fashion Week, King has previously worked with the likes of John Galliano, Donna Karan and Alexis Bittar and launched his solo collection last season.
- **King creates bold statement pieces of jewellery with found objects such as watch components and pearls, sequins, studs and chain all inlaid in resin.**
- Selling through the likes of Kabiri and Browns in London and Henry Bendels in the US the designer has already established himself as a fashion favorite.

[Back to top](#)

Opening Ceremony



Opening Ceremony

- Bold statuesque silhouettes are key this season for US brand Opening Ceremony.
- **Clean minimal lines are combined with beautiful soft leathers and handcrafted details.**
- Wedges and stacked leather heels dominate the collection while ultra flat styles add contrast.
- **Materials include super smooth and micro exotics and tie-dyed effect suede.**

Contact

www.openingceremony.us

[Back to top](#)

St.Erasmus



St.Erasmus

- South African born Designer Pieter Erasmus splits his time between his home in London and his studio in India.
- Inspired by African photography of tribes people and the Hindi movie **Dev.D**, Erasmus combines

traditional techniques with contemporary forms and material.

- **The spring/summer 2010 collection features statement pieces constructed by hand with pearls and Swarovski crystals encapsulated in a delicate thread crochet, of which Michelle Obama is a fan.**

Contact

www.st-erasmus.com

[Back to top](#)

Zoe and Morgan



Zoe and Morgan

- Art Deco-inspired pieces are new this season for the 'Who loves wins' collection inspired by the romanticism and gothic revival of the Victorian Era.
- **Delicate and feminine, the Australian based designers create rock and roll style jewellery with traditional decorative techniques.**
- A 50s-style theme continues with swallows, rope and anchors while animals such as elephants, snakes and panthers in sterling silver and gold plated silver are also key.

[Back to top](#)

© WGSN 2009