

# TURNBUTTONS

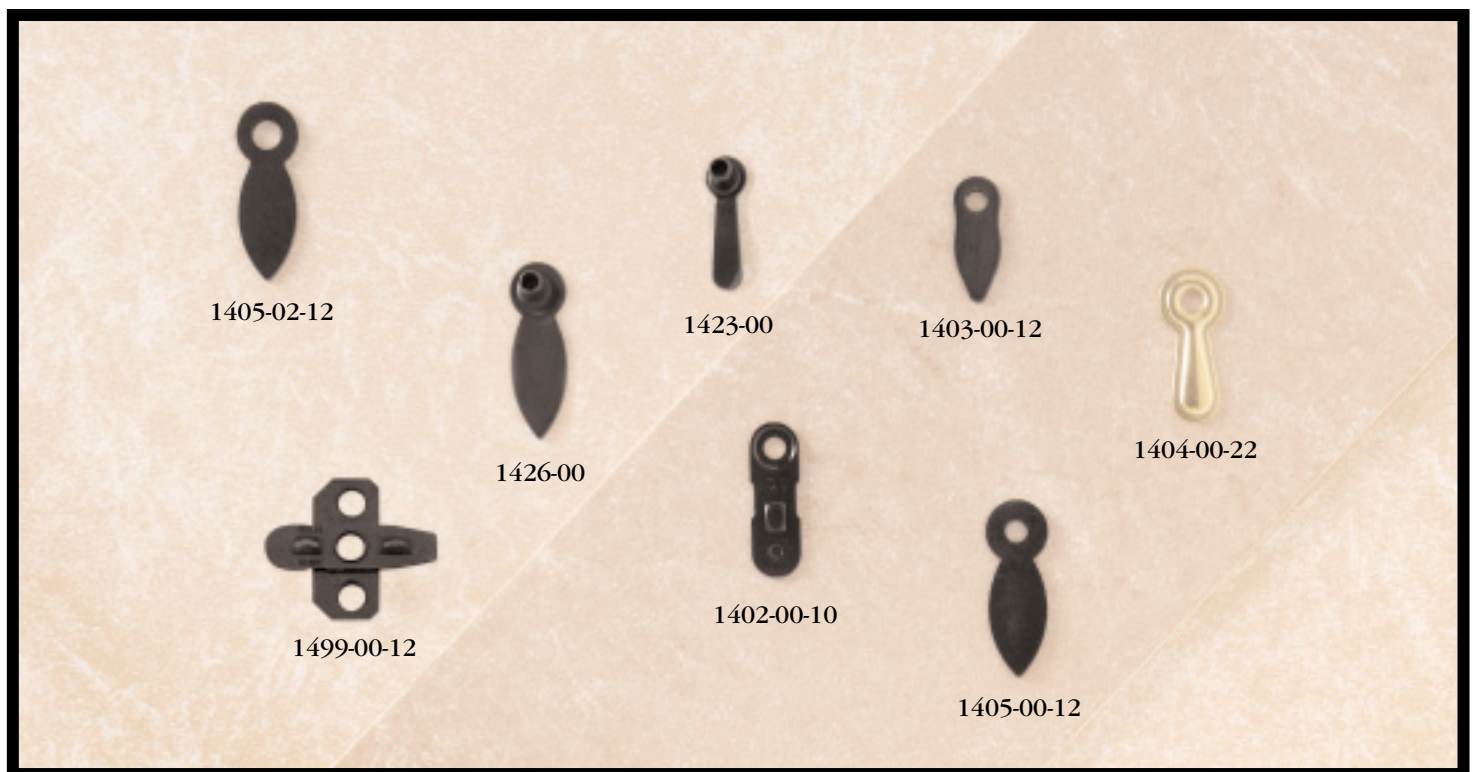


**C**raft Inc. supplies a variety of sized turnbuttons for the many sizes and shapes of picture frames.

We will work with you to select a finish which will compliment your frame backs for a subtle yet attractive addition.

Our self-fastening turnbuttons can be manually applied with our Champ machine.

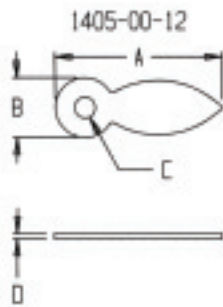
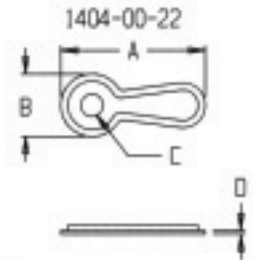
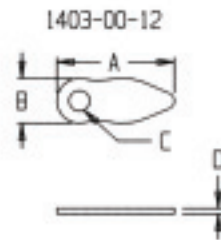
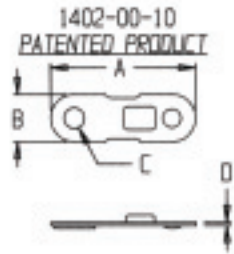
We also offer our coil fed turnbutton that can be applied with our Coil-Fed Turnbutton Machine (CFTBM).



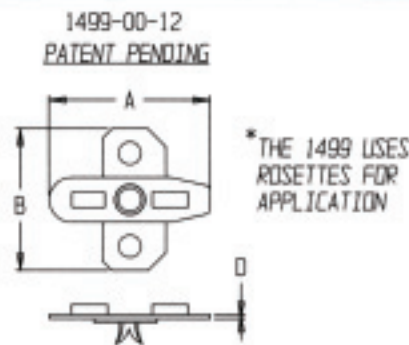
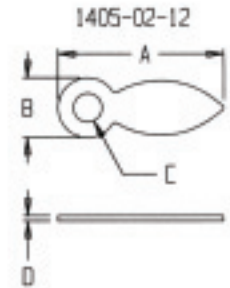
**CRAFT INC.® “Pioneers in Self-Fastening Hardware”**

1929 County Street • P.O. Box 3049 • South Attleboro, MA 02703-0912 USA • 1-800-8CRAFT8 ~ 508-761-7917 ~ Fax: 508-399-7240  
[www: www.craft-inc.com](http://www.craft-inc.com) ~ [email: craft@craft-inc.com](mailto:craft@craft-inc.com)

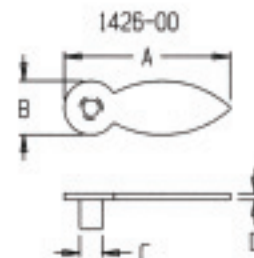
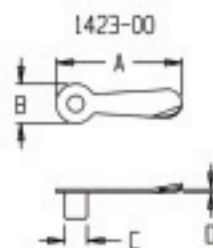
# Product Specifications: Turnbuttons



	A	B	C	D
1402-00-10	.815(20.70)	.270(6.86)	∅.115(2.92) 3/32(2.38) RIVET	.018(.46)
1403-00-12	.660(16.76)	.250(6.35)	∅.115(2.92) 3/32(2.38) RIVET	.031(.79)
1404-00-22	.815(20.70)	.350(8.89)	∅.130(3.30) 1/8(3.18) RIVET	.020(.51)
1405-00-12	.935(23.75)	.330(8.38)	∅.115(2.92) 3/32(2.38) RIVET	.031(.79)
1405-02-12	.935(23.75)	.330(8.38)	∅.160(4.06) 5/32(3.96) RIVET	.031(.79)
1499-00-12	.900(22.86)	.790(20.07)	SELF-FASTENING*	.022(.56)



MOST TURNBUTTONS ARE AVAILABLE IN A VARIETY OF FINISHES OR SOLID BRASS.



	A	B	C	D	BOARD THICKNESS	
					MIN.	MAX.
1423-00	.702(17.83)	.225(5.72)	.128(3.25)	.025(.64)	.040(1.02)	.100(2.54)
1426-00	.935(23.75)	.300(7.62)	.128(3.25)	.035(.89)	.050(1.27)	.130(3.30)

TOLERANCES AS FOLLOWS:  
 A, B & C = + .005( .127)  
 D = + .002( .050)



**CRAFT INC.® “Pioneers in Self-Fastening Hardware”**

1929 County Street • P.O. Box 3049 • South Attleboro, MA 02703-0912 USA • 1-800-8CRAFT8 - 508-761-7917 - Fax: 508-399-7240  
 www: www.craft-inc.com - email: craft@craft-inc.com