



DMT-320

SINGLE CHANNEL KVM-OVER-IP APPLIANCE

- Fastest over LAN
- 16 Bit color picture
- End to end encryption
- VNC open source client
- USB, PS/2, KVM Support
- RADIUS, SNMP, & DHCP
- Least bandwidth
- USB File transfer
- Dual Ethernet
- RoHS compliant



Today's corporation runs servers in various locations, even on different continents. And as more firms outsource applications, they must monitor the physical servers that house those applications. This makes dependable control of a server's BIOS an important link to essential data. That's why Digital Multitools offers the DMT-320 Single Channel KVM-over-IP appliance – so administrators can manage multiple servers via the DMT-320 platform-independent, light-bandwidth remote server controller.

FEATURES: Full control means precisely that.

Remote CD-ROM emulation and the DMT-320's unique virtual USB drive lets administrators:

- transfer files to servers
- install software on servers
- upgrade a server's operating system
- reset and reboot servers
- watch a reset or reboot process

The controller itself hosts the web-based control application, so you need no extra software or licensing.

The DMT-320 handles more than just servers. You can also remotely control appliances and systems that have an RS-232 serial port like many:

- alarm systems
- switches
- routers
- environmental controls
- Unix serial consoles

Ensure remote access to your systems, whether they're in your building or in another country, with enterprise-class KVM-over-IP from Digital Multitools.

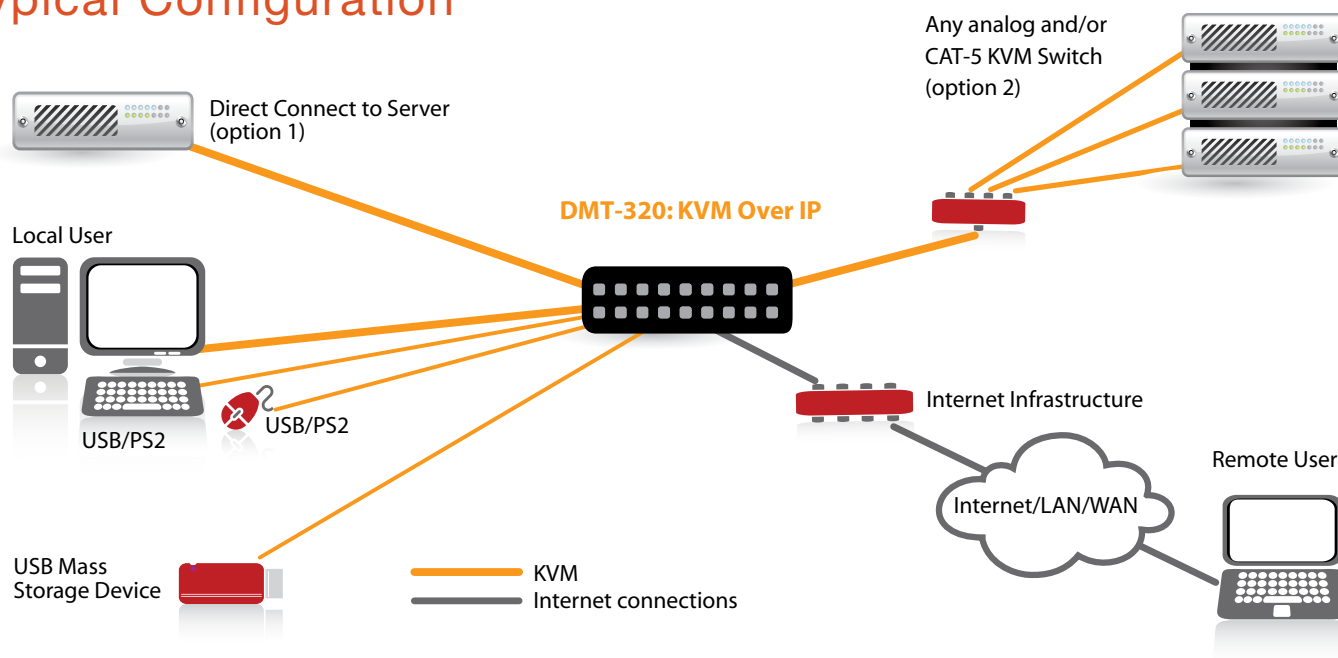
APPLICATIONS

Distributed computing configurations make dependable, high-quality KVM-over-IP essential in any of the following circumstances:

- accessing servers secured in machine rooms.
- accessing co-located servers
- acquiring BIOS level remote access to servers at co-location facilities and ISPs
- accessing corporate datacenter appliances (e.g. switches, routers, alarm systems, environmental controls, and others)
- managing outsourced servers and other IT hardware

DMT-320

Typical Configuration



CONTROL

The DMT-320 includes an onboard Web Server that you can use to configure and administer the unit using a low-bandwidth Java-enabled web browser and your choice of operating system. You can even use this simple, lightweight application over a dialup connection.

The DMT-320 is flash-upgradeable, so you can upgrade your KVM-over-IP appliance from a remote location.

TECHNICAL SPECIFICATIONS

CONNECTIONS:

- 10/100 LAN Ethernet
- PS/2 keyboard and mouse to host and device
- Video in passthrough
- USB host ports (3)
- R-Port serial appliance port
- Secondary 10/100 WAN Ethernet
- USB device port to host
- Two serial ports: RS-232 DCE and DTE
- Dual redundant external DC power in

SWITCHES & INDICATORS

- LAN & WAN link/activity
- VGA good, R-Port, Power, Setup Switch and Reset Switch (recessed)
- USB Link activity (4)

SERVER KM INTERFACE: USB and/or PS/2

LOCAL KM INTERFACE: USB and/or PS/2

SUPPORTED VIDEO MODES: All non-interlaced VESA-standard modes

MAXIMUM VIDEO RESOLUTION: 1600 x 1200 @ 75Hz

MAXIMUM USERS: 1 active user plus up to 3 viewing

SUPPORTED OPERATING SYSTEMS: Windows NT, 95, 98, 2000, ME, XP, Vista, MS-DOS, Linux, FreeBSD, UNIX, Mac OS X

NETWORK PROTOCOLS: SSH, HTTP, SNMP, HTTPS, VNC & VNCS

SECURITY: 128-bit SSL Encryption, RADIUS

LAN ETHERNET: 10/100 Base TX

SECONDARY WAN ETHERNET: 10/100 Base TX

RACK MOUNTABLE: Yes (Optional Rack Mount Kit)

POWER ADAPTER: 5V, 4A, 2.5 mm, Positive tip polarity

POWER CONSUMPTION: 5 Watt (Plus USB host power)

WEIGHT / SHIPPING WEIGHT: 1.5 Lbs (0.7 Kg) / 4.4 Lbs (2.0 Kg)

DIMENSIONS: 7.8" W x 6.6" D x 0.9" H

PACKAGE CONTENTS

- DMT-320 KVM IP unit
- External 20 watt power adapter
- KVM Cable
- User Manual

Digital Multitools Inc.

205-9005 Leslie Street, Richmond Hill, Ontario, Canada, L4B 1G7

+1-905-709-2334 | sales@dmzt.com | www.dmzt.com