

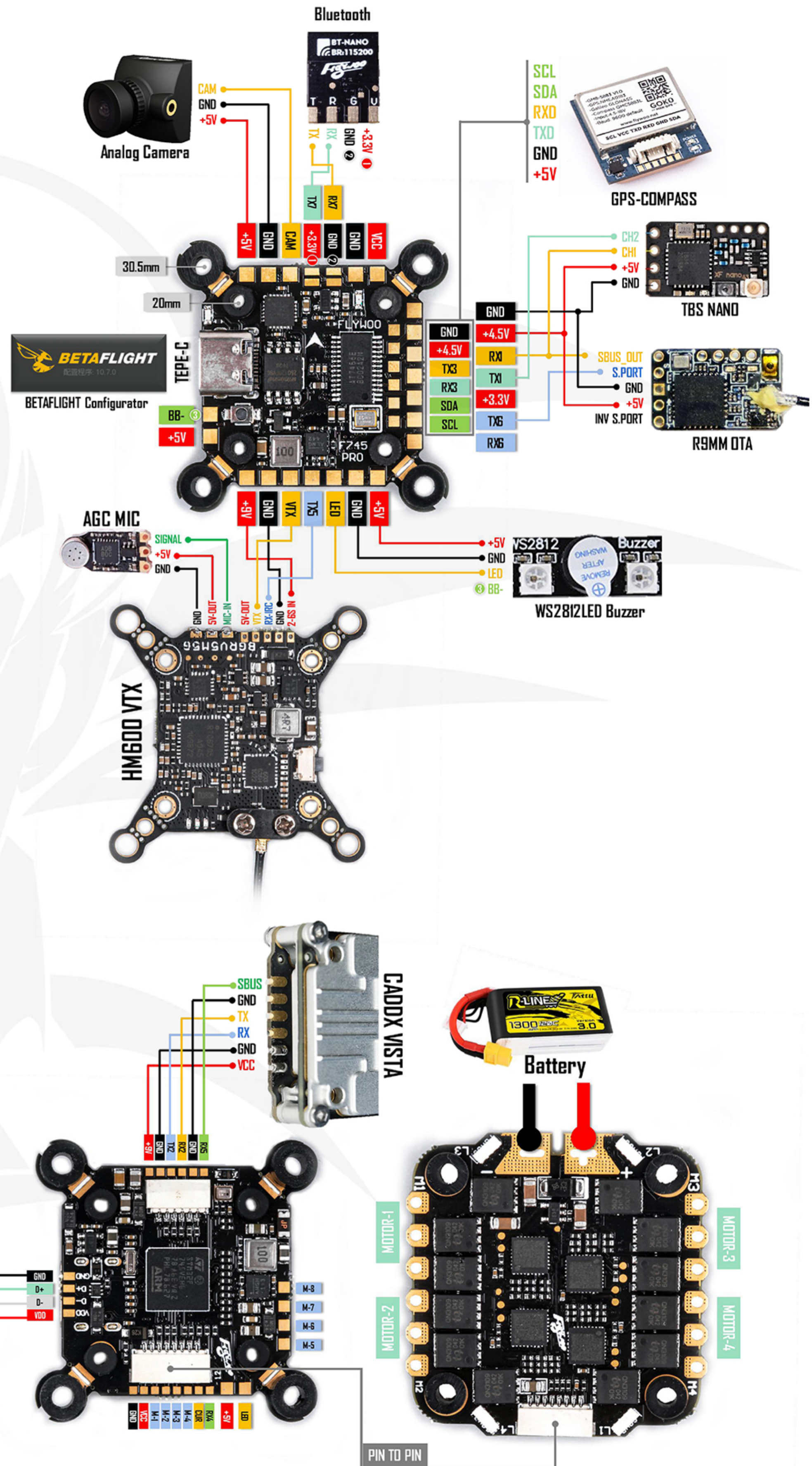
-GOKU FC STACK-

V1.0

FC:GOKU F745PRO

ESC:GOKU 506S_BL32

- SIZE: 37*37mm Weight: 5.9g
- Hole: 20*20-3mm/ 30.5*30.5-3mm
- MCU: STM32F745 BGA
- UARTS: 1/2/3/4/5/6/7
- MOTOR: M1-M8 OUTPUT
- I2C: SCL/SDA
- GYRO: MPU6000
- BARO: BMP280
- BEC: 5V 2A/9V 2A
- FLASH: 8M
- Input Voltage: 2-6S
- **Firmware: FLYWOOF745**
- Frequency: 5 bands 40 channels
- Power: PIT/25/50/100/200/850mW
- BAT: +7-26V Input
- Antenna: IPX
- MIC: AGCMIC
- Size: 30mm×30mm×4mm
- Weight: 2.5g
- Built-in 50A BL_32 4in1 ESC
- Support BLHELI_32
- Support Oneshot125, Oneshot42, Multishot, Dshot150, Dshot300, Dshot600,Dshot1200
- Input Voltage: 2-6S Lipo
- Continuous Current: 50A
- Firmware: BLHELI_32



GOKU