

*Prince*  *Princess*  
PETWEAR

by loyal appointment

Your Official Stockist

Retail Catalogue  
2011



## **Welcome to the 2011 Prince & Princess Petwear Retail Catalogue**

All of our stockists are specially selected to ensure that you when you purchase Prince & Princess Petwear from this catalogue you will receive quality products and excellent customer service.

In May, Prince & Princess Petwear will be celebrating its 5th birthday, so look out for the special offers and promotions we'll be putting on as a thank you for your support.



# Dog Collars

## DOUBLE ROW DIAMANTE COLLARS

Two rows of rhinestones, central charm ring, D-ring. Width (baby pink): 22mm  
Sizes: Small 10-12", Medium/Large 12-16", X-Large 16-20"

Colours: Baby Pink, Baby Blue, Black, Hot Pink



## BABY RHINESTONE COLLARS

Clear Rhinestones  
Rhinestone encrusted buckle  
Sizes: XS 6 ½-8" , Small 8-11" , Medium 11-14"  
Width: 10mm  
Colours: Baby Pink, Baby Blue



## DIAMANTE DAZZLE COLLAR

Clear sparkling diamante collar in unusual design. Features a D-ring, 5 buckle holes, and guide.

Colour: Fuchsia  
Size:





### POLKA DOT COLLARS

Stylish Collar  
Medium:  
11-14",  
width 2cm  
Large:  
14-18",  
width 2.5cm  
Colour: Black



### STUD COLLARS

Little Stud:  
Round rivets  
Size: 8-11",  
10mm width



Big Stud:  
Square rivets  
Size: 11-14"  
Width: 15mm, Colour: Brown



### LOVE HEARTS COLLAR

Moc Croc  
Three bling  
hearts

Colour: Red  
Sizes:  
Small 10 -14"  
Medium  
14-16"



### PARIS MOC CROC COLLARS

Moc croc  
pattern  
10mm width  
Personalise  
Colours: Rose,  
Beige



Size: 8-11"



### LEOPARD FASHION COLLAR

Sparkly dog  
Collars in 4  
Colours: Hot  
Pink, Blue,  
Gold, and  
Silver  
Size:  
11-14"  
Width 2cm



### DISCO FEVER COLLAR

Roller buckle  
Colour: Silver  
Sizes:  
Medium:  
11-14"  
Large: 14-18"  
X-Large:  
18-22"



# Dog Leads

## SMALL DESIGNER LEADS



10mm width, 4ft length, lobster clasp. Colours: Baby Pink, Baby Blue



## MEDIUM DESIGNER LEADS



15mm width, 4ft length, lobster clasp. Colours: Baby Blue, Chocolate Brown



## RHINESTONE LEAD



15mm width, 4ft length, three crystals, lobster clasp, charm ring. Hot Pink



## POLKA DOT LEADS



Two layer, double sided, 20mm width, 4ft length, lobster clasp, Colour: Black



# Collar & Lead Sets

## DOUBLE ROW RHINESTONES SETS

**Collar:** Two rows of set clear rhinestones in artificial leather

**Central Charm Ring**

**D-ring**

**Sizes:** Small 10-12", Medium/Large 12-16", X-Large 16-20"

**Lead:** 4ft length, 15mm width, lobster clasp.

**Colours:** Hot Pink, Baby Blue, Baby Pink



## BABY RHINESTONE SETS

**Collar:** Set clear rhinestones in artificial leather.

**Rhinestone encrusted buckle.**

**Sizes:** XS 6 ½-8" , Small 8-11", Medium 11-14"

**Lead:** 10mm wide, 4ft length, lobster clasp

**Colours:** Baby Pink, Baby Blue





## BIG STUD SET

Collar: Chocolate brown artificial leather with square metal rivets,

Lead: 15mm width, 4ft length  
Colour: Chocolate brown



## POLKA DOT SETS

Collar: Two layer, double-sided artificial leather. Roller buckle  
Sizes: Medium: 11-14", width 2cm  
Large: 14-18", width 2.5cm

Lead: Two layer, double sided, 20mm width, 4ft length, lobster clasp,

Colours: Black, Red, White



## CHIC CAT COLLARS

Gorgeous cat collars in a silver diamond pattern. Available in two colours. Comes with a safety elastic, and tinkling bell.

Colours: Pink, Black

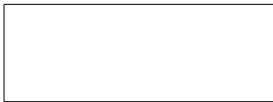


# Cat Collars

## LUXOR CAT COLLARS



**Metallic rhinestone safety collar**  
**Rhinestone buckle and bell**  
**Colours: Gold, Silver**



## ARMY CAMO CAT COLLAR



**Green Army Camo safety collar**  
**with bell**



## MAJESTIC CAT COLLARS



**Suede feel safety collar with**  
**bell and row of crystals**  
**Colours: Purple, Black**



## GLAMOUR PUSS CAT COLLARS



**Jewelled safety collar with bell**  
**Soft back, roller buckle**  
**Colour: Black, Pink, White**





# Pet Jewellery

## CROWN CHARMS

12 Rhinestones  
Lobster clasp  
Colours: Blue,  
Pink, White  
Height: 3.8cm



## RHINESTONE INITIALS

Set rhinestones  
Lobster clasp &  
Split ring



## UNION JACK CHARM

Enamelled  
Lobster clasp  
Height: 4cm



## CRYSTAL HEART CHARM

Encrusted with  
crystals  
Lobster clasp  
Height: 4.5cm



## CRYSTAL BONE CHARM

Encrusted with  
crystals  
Lobster clasp  
Height: 3cm  
Width: 2.5cm

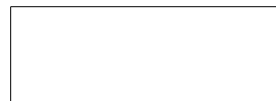


## CRYSTAL PAW CHARM

Encrusted with  
clear crystals  
Lobster clasp  
Height: 4.3cm



Back in Early  
2011!



### CRYSTAL STAR CHARM

Encrusted with crystals  
Lobster clasp  
Height: 4.8cm



### LITTLE CRYSTAL HEART CHARM

Encrusted with crystals  
Lobster clasp  
Height: 2.5cm



### 10MM SLIDER CHARMS

10mm slider  
6 crystals

Crown,



### SKULL & CROSS BONES CHARM

Lobster clasp &  
Split ring  
Height: 4.3cm



### PET HEALING CHARMS

The Gemstone Charms Collection is a range of beautiful pet jewellery – all handcrafted and totally unique.

Each piece can be easily attached to the charm ring or D-ring of a pet's collar via a small split ring. Crystals are encased in a spiral, but for boisterous pets you may need to hide it in their bedding.

Now in brand new packaging with information cards!

- Amethyst
- Blue Chalcedony
- Carnelian
- Green Agate
- Hematite
- Pink Agate
- Rock Quartz
- Tigers Eye



# Couture Clothing

## DESIGNER HOODIES

Cotton. Colours: Pink, Blue, Green, Black.

Sizes:

S3: Neck: 11-12", Chest: 17-18", Body: 12-13"

S4: Neck: 12-13", Chest: 18 ½ - 19", Body: 13 ½ - 14 ½"

S5: Neck: 13 ½ - 14", Chest: 20-21", Body: 15 ½ - 16"



## PRINCE OF BLING T-SHIRT

100% cotton, rhinestone crown motif.

Sizes:

S1: Neck: 10 ½ - 11 ½", Chest: 14-15 ½", Body: 9 ½ - 10 ½"

S2: Neck: 11 ½ - 12 ½", Chest: 17 ½ - 19 ½", Body: 11 ½ - 12 ½"

S3: Neck: 13 ½ - 15", Chest: 17 ½ - 19 ½", Body: 12 ½ - 13 ½"



## PRINCESS OF BLING T-SHIRT

100% cotton, rhinestone crown motif.

Sizes:

S1: Neck: 10 ½ - 11 ½", Chest: 14-15 ½", Body: 9 ½ - 10 ½"

S2: Neck: 11 ½ - 12 ½", Chest: 17 ½ - 19 ½", Body: 11 ½ - 12 ½"

S3: Neck: 13 ½ - 15", Chest: 17 ½ - 19 ½", Body: 12 ½ - 13 ½"





### DESIGNER PARKA COATS

Fur trim hood, Padded, Three press studs

Colours: Pink, Blue, Chocolate, Black

Sizes:

S3: Neck: 11-12", Chest: 17-18",  
Body: 12-13"

S4: Neck: 12-13", Chest: 18 ½ - 19",  
Body: 13 ½ - 14 ½"

S5: Neck: 13 ½ - 14", Chest: 20-21",  
Body: 15 ½ - 16"



### HEART HOODIES

Cotton t-shirt with hood, Intricate heart motif, Colours: Pink

Sizes:

S3: Neck: 11-12", Chest: 17-18",  
Body: 12-13"

S4: Neck: 12-13", Chest: 18 ½ - 19",  
Body: 13 ½ - 14 ½"

S5: Neck: 13 ½ - 14", Chest: 20-21",  
Body: 15 ½ - 16"



### HEART TANK TOPS

Cotton tank top, Intricate heart motif, Colours: Pink, Black

Sizes:

S3: Neck: 11-12", Chest: 17-18",  
Body: 12-13"

S4: Neck: 12-13", Chest: 18 ½ - 19",  
Body: 13 ½ - 14 ½"

S5: Neck: 13 ½ - 14", Chest: 20-21",  
Body: 15 ½ - 16"

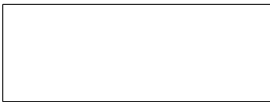


# Spa Treatments

## SPA PET SHAMPOO



Fragrances: Apricot & Peach, Seaweed & Cucumber, Pina Colada & Coconut, Tea Tree, Tangerine & Grapefruit, Tropical Island. 100ml



## SPA PET CONDITIONER



Spa Conditioner for all coat types. 100ml.



## TRAVEL SPA SET



Presented in a boutique spa box: 100ml Spa Shampoo, 100ml . Choice of shampoo fragrance.



## ULTIMATE SPA GIFT SET



Presented in a boutique spa box: 100ml Spa Shampoo, 100ml Spa Conditioner, 60ml Travel Size Spa Shampoo, Herbal Pet Balm 75g, Spa Towel





# Dog Toys

## FOOTBALL CRAZY TOY

Canvas Ball  
Hard wearing  
Suits Medium-Large sized dogs  
Height: 10.5cm



## LEOPARD PLUSH BONE TOY

Plush Furry Bone  
Squeaker  
Suits Medium-Large sized dogs  
Width: 21cm, Height: 5.5cm, Length:  
12cm (approximate)



## ARMY CAMO PLUSH TOYS

Plush toys in army camo with  
squeaker  
Suits Medium-Large sized dogs  
Available in: Atom Bomb, Ring,  
Dumbbell, and Bone





# Cat Toys

## HEART MOUSE

A gorgeous plush designer mouse in the shape of a heart.



## CATNIP CAT TOY

The perfect add-on sale, featuring a red ribbon and bell.



## SISAL CAT BALLS

Sisal cat ball in purple/pink/natural, with rattle.  
Available in two sizes; Small and medium



# Canine & Feline Gift Sets

## CANINE GIFT SETS

Exclusive sets with themes such as 'The Hollywood Star', 'The Princess', and 'The Stud'.

All contain a collar, toy, shampoo + more.



NEW GOLD/SILVER BOXES FOR 2011!



## FELINE GIFT SETS

Exclusive sets with themes such as 'The Fussy Feline', containing toys, jewellery and a collar.

NEW GOLD/SILVER BOXES FOR 2011!





# Pet Beds

## SWEET DREAMS BED

This gorgeous bed has a blue fleece lining to ensure a warm and comfortable night's sleep. The bed is completed with a cute heart shaped pillow.

Small: 45cm x 35cm

Medium: 53cm x 40cm

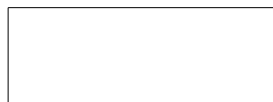


## PRETTY BOUTIQUE BED

Made of the softest corduroy polyester fabric, ideal for small dogs. It has a removable inner cushion which is fully washable.

Small/Medium, Light Pink

Approx.: 60cm x 50cm



## CHOC DONUT BED

Made of chocolate and caramel soft fabrics, the snug design will ensure a comfortable and warm night's sleep. Comes with pillow.

Available in two sizes: Medium: 50cm

Large: 60cm



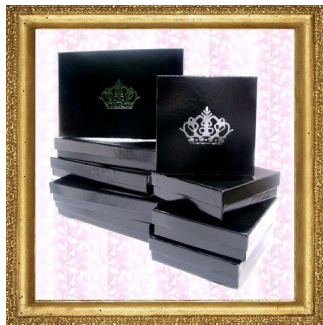


# Point of Sale & Merchandising

## GIFT BOXES

Glossy black  
Crown Logo

Sizes:  
X-Small  
Small,  
Medium



## GIFT BAGS

10x Gold  
drawstring  
Gift bags for  
jewellery and  
collars

Sizes: Small,  
Medium



# Sizing Information

## **MEASURING FOR A COLLAR**

Get a measuring tape or string and place two of your fingers between the dog's neck and the tape/string.

Wrap the string/tape around your dog's neck and fingers (like a dog collar). There should be no more than the width of those two fingers between the neck and dog collar. If it fits looser than this, the collar may slip over the dog's ears during use. Mark the string/tape and measure it.

After wearing the dog collar for a while, check your dog's neck occasionally to see if your dog has any redness or hair loss under the dog collar. If you have a puppy and have a collar on it, it is so important that you constantly check the collar to see if your puppy has outgrown it – otherwise the collar could dig into the neck and cause bleeding.

## **MEASURING FOR CLOTHING**

There are three measurements that need to be taken when sizing for dog clothes:

The Body Length – Measure from the base of your pet's head (where the collar normally sits) along the backbone to the base of the tail (the point where the tail begins).

The Chest Measurement – using a tape measure or string, measure the chest at its broadest point, (this is usually directly behind the front legs.)

The Neck Circumference – measure the circumference of your pet's neck as you would for a collar. Ensure that this is not too tight, (you should be able to get two fingers behind the measuring tape) before noting the measurement.



**YOUR OFFICIAL STOCKIST IS:**

