



'MODERNE' COLLECTION 2010-2011
Handcrafted Resin Jewellery

ABOUT POLKA LUKA

Polka Luka is a Australian design label creating contemporary handcrafted resin pieces, focusing on clean lines, organic form, and vibrant colour. Working with the malleable material of resin, each item is entirely hand-crafted- resulting in innovative, limited edition, yet eminently easy to wear pieces.

'MODERNE' COLLECTION 2010-2011

Our 2010-2011 'Moderne' Collection draws inspiration from the classics in 1950s and early 1960s interior and furniture design. From a post-war period where designers such as Arne Jacobsen, Harry Bertoia, George Nelson, Eero Saarinen, and Charles and Ray Eames were seeking both to create a warmer, more optimistic, and organic aesthetic, the 1950s provided an enduring legacy whose design principles are much in evidence today. Our 'Moderne' collection seeks to capture this organic approach and emphasis of simplicity of form, and unite it with pure, vibrant colour characteristic of both the 1950s and early 1960s. The result is a collection that sings with colour and hums with a restraint of form.

Polka Luka Design and Production: Polka Luka emphasizes small scale, environmentally and socially responsible production processes. All products are designed in Australia, and then produced, by hand in collaboration with two family workshops in Bali. By concentrating small scale production in these two workshops, Polka Luka is able to closely monitor and improve working conditions, and create an equitable work environment.

All Polka Luka jewellery pieces are 100% handmade from moulds being hand cast to each piece being sanded and constructed by hand. This results in limited edition pieces to treasure.

About the Designer: Polka Luka Creative director, Alexandra Freeman, has a background in fine arts, art history, and cultural studies. Over eight years of travel, cultural conservation work, and design work in rural areas across China and South East Asia have combined to create a rich patchwork of experiences that inform the design and manufacture of each Polka Luka piece. Alexandra's travels across South East and East Asia have also illustrated the necessity of equitable and sustainable trade in improving people's livelihoods and quality of life. An enduring love of colour and simplicity, and a commitment to working equitably are the foundations of the Polka Luka philosophy.

As a result of Polka Luka's emphasis on small scale production and individual design, you know you will be wearing an ethically crafted, limited edition piece.

**Warm wishes,
Alexandra and The Polka Luka Team**

Thanks to model Salvita, photographer, Andy, and to label, Amilita for the 'Kiera' silk dresses worn throughout the catalogue.



Jacobsen Necklace, Mixed Bangles



Pod Necklace & Pod Earrings



Octave - Opaque Red
Code: RN0213
Length: 57.5cm on wire



Octave - Opaque Orange
Code: RN0216
Length: 57.5cm on wire



Dove Nlace-Sht-Opaque Red
Code: RN0205
Length: 56.5cm on satin cord



Dove-Sht-Opaque Orange
Code: RN0208
Length: 56.5cm on satin cord



Dove Nlace-Ig-Opaque Red
Code: RN0209
Length: 84cm on satin cord



Dove - Lg- Opaque Orange
Code: RN0212
Length: 84cm on satin cord



Abstract Necklace- TransRed
Code: RN0188
Length: 58cm on Satin Cord



Abstract Necklace- Orange
Code: RN0191
Length: 58cm on Satin Cord



Pod Necklace- Trans Red
Code: RN0200
Length: 55-60cm (extendable)
On Satin Cord



Pod Necklace- Trans Orange
Code: RN0204
Length: 55-60cm (extendable)
On Satin Cord



Pod Dark Opaque Red
Code: RN0230
Length: 55-60cm (extendable)
On Satin Cord



Lunette Necklace- Trans Red
Code: RN0194
Length: 62.5cm on wire



Lunette Necklace- Orange
Code: RN0198
Length: 62.5cm on wire



Lunette - Dark Opaque Red
Code: RN0222
Length: 62.5cm on wire



Jacobsen Nlace- Trans Red
Code: RN0182
Length: 88cm on satin cord



Jacobsen- Trans Orange
Code: RN0185
Length: 88cm on satin cord



Bertoia Necklace, Bertoia & Bevelled Bangles

Polka Luka



Dove necklace, octave earrings



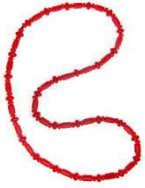
Swirl Pendant, Bevelled Bangle, Rock Ring



Octave Necklace & earring, eero bangle



Mix Necklace & Bangles



Eero Necklace- Trans Red
Code: RN0176
Length: 116cm on satin cord



Eero Necklace- Trans Orange
Code: RN0179
Length: 116cm on satin cord



Bertoia Necklace- Trans Red
Code: RN0225
Length: 57-62cm (extension)
On Satin Cord



Bertoia Necklace- Lg- Red
Code: RN0222
Length: 86cm on satin cord



Bolt Pendant- Trans Red
Code: RP0014
Length: 86cm stainless steel



Swirl Drop Pendant- Red
Code: RP0016
Length: 86cm stainless steel



Swirl Drop Pendant- Orange
Code: RP0019
Length: 86cm stainless steel



Hoop- Pollock- Trans Red
Code: RB0163
Diameter: 6.5 cm H: 1.2cm



Hoop- Pollock-Trans Orange
Code: RB0165
Diameter: 6.5 cm H: 1.2cm



Hoop (2 Bangles) Trans Red
Code: RB0172
Diameter: 6.5 cm H: 1.2cm



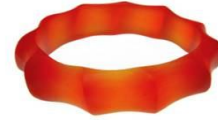
Hoop (2 Bangles)-solid Red
Code: RB0171
Diameter: 6.5 cm H: 1.2cm



Hoop (2) TransOrange
Code: RB0174
Diameter: 6.5 cm H: 1.2cm



Hoop(2 Bangles)- Yellow
Code: RB0169
Diameter: 6.5 cm H: 1.2cm



Bertoia Narrow Orange
Code: RB0157
Diameter: 6.8cm H: 1.7cm



Bertoia Narrow - Trans Red
Code: RB0155
Diameter: 6.8cm H: 1.7cm



Bertoia Narrow-Opaque Red
Code: RB0154
Diameter: 6.8cm Height: 1.7cm



Bertoia Narrow- Yellow
Code: RB0161
Diameter: 6.8cm Height: 1.7cm



Bertoia Wide - Trans Red
Code: RB0181
Diameter: 6.8 cm Height: 3cm



Bertoia Wide - Trans Orange
Code: RB0183
Diameter: 6.8 cm Height: 3cm



Bertoia Wide -Opaque Red
Code: RB0180
Diameter: 6.8 cm Height: 3cm



Dove Necklace, Octave Earrings, Jacobsen Ring



Bevelled Bangle- Trans Red
Code: RB0189
Diameter: 6.8 cm H: 3.5cm



Bevelled Bangle-Orange
Code: RB0191
Diameter: 6.8 cm H: 3.5cm



Bevelled Bangle-solid Red
Code: RB0188
Diameter: 6.8 cm H: 3.5cm



Wrap Bangle- Trans Red
Code: RB0196
Diameter: Open Height: 5cm



Wrap Bangle- Trans Orange
Code: RB0198
Diameter: Open Height: 5cm



Wrap Bangle- Opaque Red
Code: RB0220
Diameter: Open Height: 5cm



Eero Bangle- Red & White
Code: RB0151
Diameter: 6.7cm Height: 4cm



Eero Bangle- Orange & White
Code: RB0152
Diameter: 6.7cm Height: 4cm



Octave Bracelet- Red
Code: RB0207
Flexible on stretch elastic



Octave Bracelet- Orange
Code: RB0210
Flexible on stretch elastic



Delicate Bracelet- Red
Code: RB0213
Flexible on stretch elastic



Delicate Bracelet- Orange
Code: RB0216
Flexible on stretch elastic



Abstract Bracelet- Red
Code: RB0201
Flexible on stretch elastic



Abstract Bracelet- Orange
Code: RB0203
Flexible on stretch elastic



Double Band Ring - Red
Code: RR0068
Size: Q 1/2(8.5)



Bolt Ring- Transparent Red
Code: RR0073
Size: Q 1/2(8.5)



Dove Necklace, Octave Earrings



Abstract Necklace, Abstract Earrings, Rock Ring



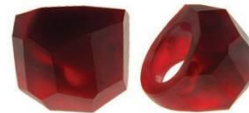
Eclipse Ring- Trans Red
Code: RR0076
Size: Q 1/2(8.5)



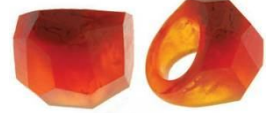
Eclipse Ring - Trans Orange
Code: RR0077
Size: Q 1/2 (8.5)



Jacobsen Ring- Opaque Red
Code: RR0083
Resin & Stainless Steel
Adjustable



Rock Ring- Red Mix
Code: RR0061
Size: R-R1/2 (8.75-9)



Rock Ring- Orange Mix
Code: RR0064
Size: R-R1/2 (8.75-9)



Abstract Earrings- Trans Red
Code: RE0090
Length: 4.5cm (incl hook)



Abstract Earrings-Orange
Code: RE0093
Length: 4.5cm (incl hook)



Pod Earring- Trans Red
Code: RE0074
Length: 5.2cm (incl hook)



Pod Earring- Trans Orange
Code: RE0077
Length: 5.2cm (incl hook)



Dew Drop Ergs- Red & Orange
Code: RE0065
Length: 5cm (incl hook)



Dome Earrings- Trans Red
Code: RE0072
Length: 5cm (incl hook)



Bertoia Earrings- Trans Red
Code: RE0096
Length: 5cm (incl hook)



Octave Erg- Opaque Orange
Code: RE0082
Length: 4.2cm (incl hook)



Octave Earring- Opaque Red
Code: RE0079
Length: 4.2cm (incl hook)



Hoop Earrings- Trans Red
Code: RE0061
Length: 4cm Incl. hook



Mies Earring- Trans Red
Code: RE0068
Length: 4.5cm incl hook



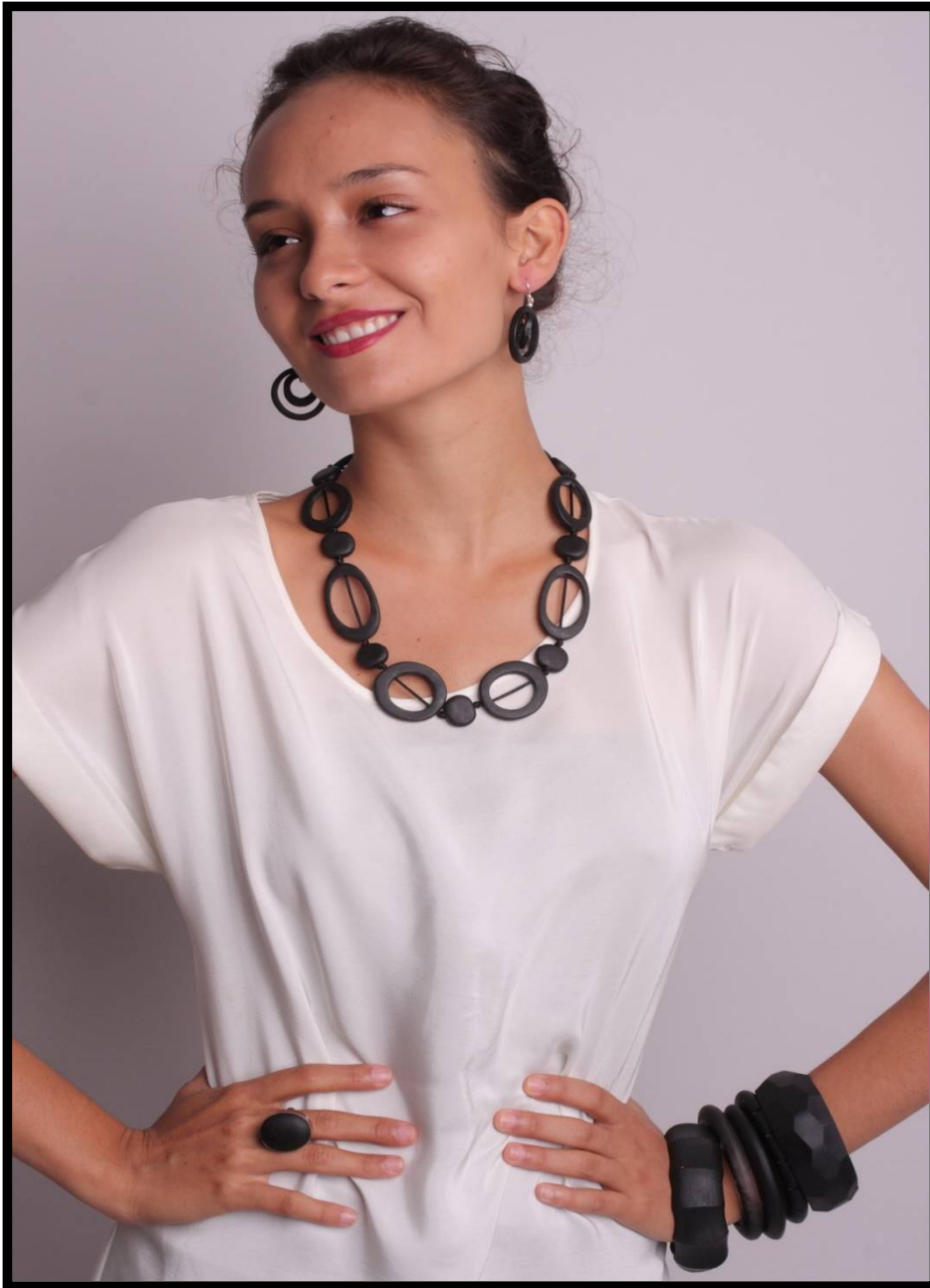
Lunette Earring- Orange
Code: RE0103
Length: 3.3cm (incl hook)



Lunette Earring-Trans Red
Code: RE0099
Length: 3.3cm (incl hook)



Lunette Earring- Opaque Red
Code: RE0102
Length: 3.3cm (incl hook)



Bertoia Necklace & Earrings, Jacobsen ring, Mix bangles



Octave Necklace- Black
Code: RN0214
Length: 57,5cm on wire



Dove Nlace- Sht- Black
Code: RN0206
Length: 56.5cm on satin cord



Dove Necklace- Lg- Black
Code: RN0210
Length: 84cm on satin cord



Abstract Necklace- Black
Code: RN0189
Length: 58cm on Satin Cord



Pod Necklace- Black
Code: RN0201
Length: 55-60cm (extendable)
On Satin Cord



Lunette Necklace- Black
Code: RN0195
Length: 62.5cm on wire



Jacobsen Necklace- Black
Code: RN0183
Length: 88cm on satin cord



Eero Necklace- Black
Code: RN0177
Length: 116cm on satin cord



Bertoia Necklace- Sht- Black
Code: RN0226
Length: 57-62cm (extension)
On Satin Cord



Bertoia Necklace- Long
Code: RN0223
Length: 86cm
On Satin Cord



Swirl Drop Pendant- Black
Code: RP0017
Length: 86cm stainless steel



Bolt Pendant- Black
Code: RP0013
Length: 86cm stainless steel



Hoop- Pollock- Black
Code: RB0162
Diameter: 6.5 cm H: 1.2cm



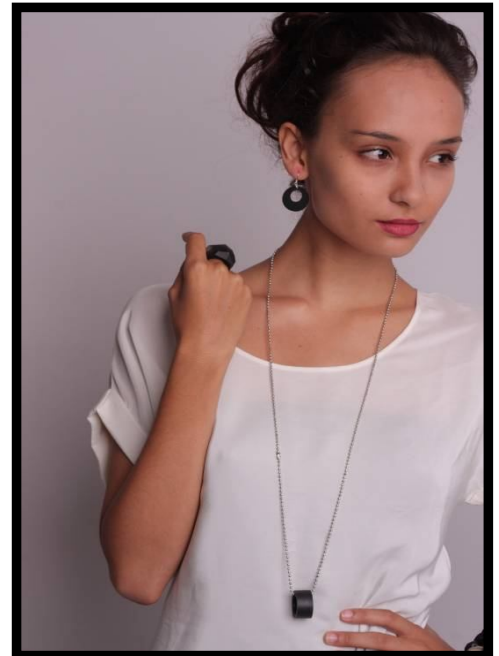
Hoop (2 Bangles)- Black
Code: RB0170
Diameter: 6.5 cm H: 1.2cm



Bertoia Narrow- Black
Code: RB0168
Diameter: 6.8cm Height: 1.7cm



Bertoia Wide- Black
Code: RB0179
Diameter: 6.8 cm Height: 3cm



Bolt Pendant, Hoop Earrings, Rock Ring



Dove Necklace, Rock Ring



Abstract Necklace & Earrings



Dove Necklace, Rock Ring, Mix bangles



Bertoia Necklace- short & long



Bevelled Bangle- Black
Code: RB0187
Diameter: 6.8 cm H: 3.5cm



Wrap Bangle - Black
Code: RB0195
Diameter: Open Height: 5cm



Eero Bangle- Black & White
Code: RB0150
Diameter: 6.7cm Height: 4cm



Delicate Bracelet- Black
Code: RB0214
Flexible on stretch elastic



Octave Bracelet- Black
Code: RB0208
Flexible on stretch elastic



Abstract Bracelet- Black
Code: RB0202
Adjustable on stretch elastic



Double Ring- Black & Grey
Code: RR0069
Size: Q 1/2 (8.5)



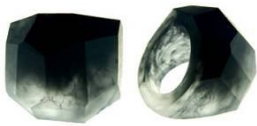
Bolt Ring- Black
Code: RR0071
Size: Q 1/2 (8.5)



Eclipse Ring- Black
Code: RR0074
Size: Q 1/2 (8.5)



Jacobsen Ring- Black
Code: RR0081
Resin & Stainless Steel
Adjustable



Rock Ring- Black Mix
Code: RR0062
Size: R-R1/2 (8.75-9)



Abstract Earrings- Black
Code: RE0091
Length: 4.5cm (incl hook)



Pod Earring- Black
Code: RE0075
Length: 5.2cm (incl hook)



Dew Drop Ears- Black-White
Code: RE0066
Length: 5cm (incl hook)



Octave Earring- Black
Code: RE0080
Length: 4.2cm (incl hook)



Dome Earrings- Black
Code: RE0073
Length: 5cm (incl hook)



Bertoia Earrings- Black
Code: RE0097
Length: 5cm (incl hook)



Lunette Earring- Black
Code: RE0100
Length: 3.3cm (incl hook)



Hoop Earrings- Black
Code: RE0062
Length: 4cm incl. hook



Mies Earring- Black
Code: RE0069
Length: 4.5cm (incl hook)



Dove Necklace-long & Short, Octave Earrings, Jabobsen ring, Mix bangles



Octave Necklace- White
Code: RN0215
Length: 57,5cm on wire



Dove Nlace- Sht- White
Code: RN0207
Length: 56,5cm on satin cord



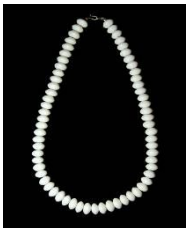
Dove Necklace- Lg- White
Code: RN0211
Length: 84cm on satin cord



Abstract Necklace- White
Code: RN0190
Length: 58cm on Satin Cord



Pod Necklace- White
Code: RN0202
Length: 55-60cm (extendable)
On Satin Cord



Lunette Necklace- White
Code: RN0196
Length: 62,5cm on wire



Jacobsen Necklace- White
Code: RN0184
Length: 88cm on satin cord



Eero Necklace- White
Code: RN0178
Length: 116cm on satin cord



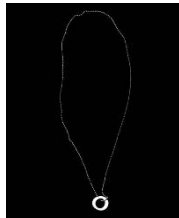
Bertoia Necklace- Sht- White
Code: RN0227
Length: 57-62cm (extension)
On Satin Cord



Bertoia Necklace- Lg- White
Code: RN0224
Length: 86cm on satin cord



Swirl Drop Pendant- White
Code: RP0018
Length: 86cm stainless steel



Bolt Pendant- White
Code: RP0015
Length: 86cm stainless steel



Hoop- Pollock- White
Code: RB0164
Diameter: 6.5 cm H: 1.2cm



Hoop (2 Bangles)- White
Code: RB0173
Diameter: 6.5 cm Height: 1.2cm



Bertoia Narrow - White
Code: RB0156
Diameter: 6.8cm Height: 1.7cm



Bertoia Wide - White
Code: RB0182
Diameter: 6.8 cm Height: 3cm



Jacobsen Necklace, Octave Earrings, Bolt ring



Abstract Necklace & Earrings, Rock Ring, Mix Bangles



Bevelled Bangle- White
Code: RB0190
Diameter: 6.8 cm H: 3.5cm



Wrap Bangle- White
Code: RB0197
Diameter: Open Height: 5cm



Octave Bracelet- White
Code: RB0209
Flexible on stretch elastic



Delicate Bracelet- White
Code: RB0215
Flexible on stretch elastic



Eclipse Ring- White
Code: RR0075
Size: Q 1/2 (8.5)



Bolt Ring- White
Code: RR0072
Size: Q 1/2 (8.5)



Rock Ring- White Mix
Code: RR0063
Size: R-R1/2 (8.75-9)



Jacobsen Ring- White
Code: RR0082
Resin & Stainless Steel
Adjustable



Abstract Earrings- White
Code: RE0092
Length: 4.5cm (incl hook)



Pod Earring- White
Code: RE0076
Length: 5.2cm (incl hook)



Lunette Earring- White
Code: RE0101
Length: 3.3cm (incl hook)



Octave Earring- White
Code: RE0081
Length: 4.2cm (incl hook)



Mies Earring- White
Code: RE0070
Length: 4.5cm (incl hook)



Hoop Earrings- White
Code: RE0063
Length: 4cm incl. hook



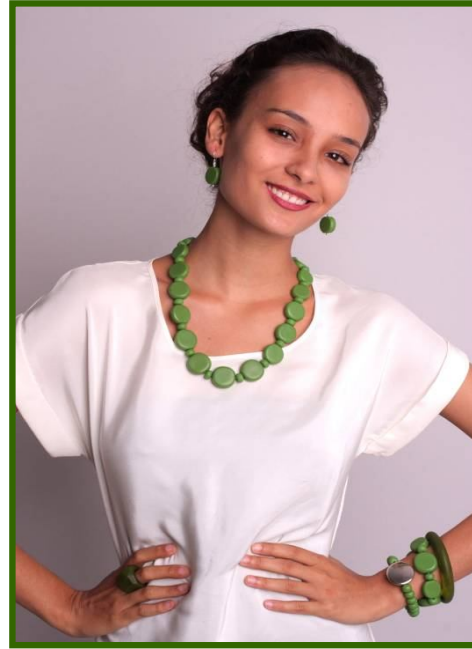
Bertoia Earrings- White
Code: RE0098
Length: 5cm (incl hook)



Swirl Pendant, Octave & Delicate Bracelets



Eero Necklace, Lunette Earrings



Octave Necklace & Earrings



Pod Necklace & Earrings, Double Band Ring



Lunette Necklace & Earrings, Mix Bangles



Octave Nlace- Opaque Lime
Code: RN0217
Length: 57.5cm on wire



Octave Nlace- Opaque Aqua
Code: RN0218
Length: 57.5cm on wire



Abstract Necklace- Lime
Code: RN0193
Length: 58cm on Satin Cord



Abstract Necklace- Aqua
Code: RN0219
Length: 58cm on Satin Cord



Abstract Nlace- Turquoise
Code: RN0192
Length: 58cm on Satin Cord



Lunette Necklace-Trans Lime
Code: RN0197
Length: 62.5cm on wire



Lunette Necklace- Turquoise
Code: RN0199
Length: 62.5cm on wire



Pod Necklace- Trans Lime
Code: RN0203
Length: 55-60cm (extendable)
On Satin Cord



Jacobsen Nlace- Turquoise
Code: RN0187
Length: 88cm on satin cord



Jacobsen Nlace-Trans Lime
Code: RN0186
Length: 88cm on satin cord



Eero Necklace- Turquoise
Code: RN0181
Length: 116cm on satin cord



Eero Necklace- Trans Lime
Code: RN0180
Length: 116cm on satin cord



Bertoia Necklace- Turquoise
Code: RN0229
Length: 57-62cm (extension)
On Satin Cord



Bertoia Necklace-Trans Lime
Code: RN0228
Length: 57-62cm (extension)
On Satin Cord



Hoop- Pollock- Trans Aqua
Code: RB0219
Diameter: 6.5 cm H: 1.2cm



Hoop- Pollock-Trans Lime
Code: RB0166
Diameter: 6.5 cm H: 1.2cm



Octave Necklace, Wrap Bangle, Rock Ring



Hoop-Pollock-Turquoise
Code: RB0167
Diameter: 6.5 cm H: 1.2cm



Hoop(2 Bangles)-Trans Aqua
Code: RB0177
Diameter: 6.5 cm H: 1.2cm



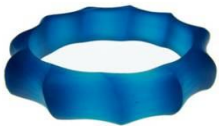
Hoop(2 Bangles)-Trans Lime
Code: RB0175
Diameter: 6.5 cm H: 1.2cm



Hoop-(2 Bangles) Turquoise
Code: RB0176
Diameter: 6.5 cm H: 1.2cm



Hoop(2)-Opaque Aqua
Code: RB0178
Diameter: 6.5 cm H: 1.2cm



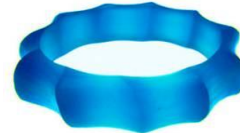
Bertoia Narrow - Turquoise
Code: RB0159
Diameter: 6.8cm Height: 1.7cm



Bertoia Narrow - Trans Lime
Code: RB0158
Diameter: 6.8cm Height: 1.7cm



Bertoia Narrow Opaque Aqua
Code: RB0221
Diameter: 6.8cm H: 1.7cm



Bertoia Narrow -Trans Aqua
Code: RB0160
Diameter: 6.8cm H: 1.7cm



Bertoia Wide - Lime
Code: RB0184
Diameter: 6.8 cm Height: 3cm



Bertoia Wide - Turquoise
Code: RB0185
Diameter: 6.8 cm Height: 3cm



Bevelled Bangle- Trans Lime
Code: RB0192
Diameter: 6.8 cm H: 3.5cm



Bevelled Bangle-Turquoise
Code: RB0193
Diameter: 6.8 cm H: 3.5cm



Bevelled Bangle- Trans Aqua
Code: RB0194
Diameter: 6.8 cm H: 3.5cm



Eero Bangle- Green & White
Code: RB0153
Diameter: 6.7cm Height: 4cm



Wrap Bangle- Trans Lime
Code: RB0199
Diameter: Open Height: 5cm



Wrap Bangle- Turquoise
Code: RB0200
Diameter: Open Height: 5cm



Octave Bracelet- Lime
Code: RB0211
Flexible on stretch elastic



Octave Bracelet- Aqua
Code: RB0212
Flexible on stretch elastic



Delicate Bracelet- Lime
Code: RB0217
Flexible on stretch elastic



Delicate Bracelet- Aqua
Code: RB0218
Flexible on stretch elastic



Abstract Bracelet- Lime
Code: Code: RB0204
Flexible on stretch elastic



Abstract Bracelet- Turquoise
Code: Code: RB0205
Flexible on stretch elastic



Double Band -Lime & Khaki
Code: RR0070
Size: Q 1/2 (8.5)



Double Band-Turquoise Aqua
Code: RR0084
Size: Q 1/2 (8.5)



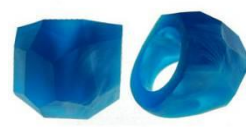
Eclipse Ring- Trans Turquoise
Code: RR0078
Size: Q 1/2 (8.5)



Eclipse Ring- Trans Lime
Code: RR0080
Size: Q 1/2 (8.5)



Eclipse Ring- Trans Aqua
Code: RR0079
Size: Q 1/2 (8.5)



Rock Ring- Turquoise Mix
Code: RR0066
Size: R-R1/2 (8.75-9)



Rock Ring- Green Mix
Code: RR0065
Size: R-R1/2 (8.75-9)



Rock Ring- Aqua Mix
Code: RR0067
Size: R-R1/2 (8.75-9)



Abstract Earrings- Trans Lime
Code: RE0094
Length: 4.5cm (incl hook)



Abstract Earrings- Turquoise
Code: RE0106
Length: 4.5cm (incl hook)



Abstract Earrings- Aqua
Code: RE0095
Length: 4.5cm (incl hook)



Pod Earring- Trans Lime
Code: RE0078
Length: 5.2cm (incl hook)



Dew Drop Ergs-Turquoise&Lime
Code: RE0067
Length: 5cm incl. hook



Lunette Earring- Lime
Code: RE0104
Length: 3.3cm (incl hook)



Lunette Earring- Turquoise
Code: RE0105
Length: 3.3cm (incl hook)



Octave Earring- Opaque Aqua
Code: RE0084
Length: 4.2cm (incl hook)



Octave Earring- Opaque Lime
Code: RE0083
Length: 4.2cm (incl hook)



Red 'Pebble'
Opaque Polished Finish
Code: RN0017
Length: 53cm on wire



Red 'Pebble'
Opaque Polished Finish
Code: RN0017
Length: 53cm on wire



Deep Red 'Elliptic'- (Short)
Transparent Matt Finish
Code: RN0128
Length: 65cm on Satin Cord



Deep Red 'Elliptic'- (Long)
Transparent Matt Finish
Code: RN0119
Length: 88cm on Satin Cord



Red Theme 'Lolly Shoppe'
Mixed Matt and Polished
Code: RN0071
Length: 99cm



Red Ellypsis (Narrow Band)
Transparent- Matt Finish
Code: RB0035
Diameter: 6.5cm H: 2-3.5cm



Orange Ellypsis
Transparent- Matt Finish
Code: RB0105
Diameter: 6.5cm H: 2-3.5cm



Bright Red 'Miro' Bangle
Opaque Matt Finish
Code: RB0111
Diameter: 6.8cm H: 1.5cm



Orange 'Oceanic' Bangle
Transparent Semi Polish
Code: RB0064
Diameter: 6.5cm Height: 1cm



Deep Red 'Oceanic'
Transparent Semi Polish
Code: RB0040
Diameter: 6.5cm Height: 1cm



Bright Red 'Oceanic' Bangle
Opaque Semi Polish
Code: RB0100
Diameter: 6.5cm Height: 1cm



Yellow 'Oceanic' Bangle
Opaque Semi Polish
Code: RB0102
Diameter: 6.5cm Height: 1cm



Red 'River Rock' Bracelet
Opaque Polished Finish
Code: RB0118
Adjustable on clear elastic



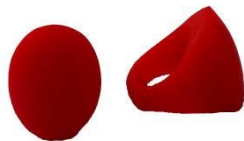
Deep Red 'Luna' Ring
Transparent Matt Finish
Code: RR0002
Size: R 1/2 (9)



Orange 'Luna' Ring
Transparent Matt Finish
Code: RR0005
Size: R 1/2 (9)



Deep Red 'Sphere' Ring
Transparent Matt Finish
Code: RR0045
Size: P 1/2 (8)



Opaque Red 'Galatic' Ring
Opaque Matt Finish
Code: RR0038
Size: R 1/2 (9)



Orange 'Galatic' Ring
Transparent Matt Finish
Code: RR0041
Size: R 1/2 (9)



Deep Red 'Galatic' Ring
Transparent Matt Finish
Code: RR0044
Size: R 1/2 (9)



Red 'Oeuf' Earring
Transparent Matt Finish
Code: RE0023
Size: 6cm (incl. hook)



Red 'Gum Drop' Earring
Opaque Polished Finish
Code: RE0032
Size: 4.5cm (incl Hook)



Deep Red 'Leaf' Earring
Transparent Matt Finish
Code: RE0036
Size: 6cm (incl. clasp)



Deep Red 'Drum' Earring
Transparent Matt Finish
Code: RE0040
Size: 4.6cm (incl. clasp)



Red 'Rothko' Earrings
Transparent Matt Finish
Code: RE0020
Size: 6cm (incl. hook)



Black 'Pebble' (Short)
Opaque Polished Finish
Code: RN0018
Length: 56cm on wire



Black 'Pebble- Gum Nut'
Opaque Polished Finish
Code: RN0058
Length: 86cm on Satin Cord



Black 'Elliptic'- (Short)
Transparent Matt Finish
Code: RN0129
Length: 65cm on Satin Cord



Black 'Elliptic'- (Long)
Transparent Matt Finish
Code: RN0120
Length: 88cm on Satin Cord



Black 'Ellypsis' Bangle
Opaque Matt Finish
Code: RB0036
Diameter: 6.5cm H:2-4cm



Black 'Miro' Bangle
Opaque Matt Finish
Code: RB0112
Diameter: 6.8cm H: 1.5cm



Black 'Oceanic' Bangles
Code: RB0041
Diameter: 6.5cm Height: 1cm



Black 'River Rock' Bracelet
Opaque Polish Finish
Code: RB0119
Adjustable on clear elastic



Black 'Luna' Ring
Opaque Matt Finish
Code: RR0001
Size: R 1/2 (9)



Black 'Sphere' Ring
Opaque Matt Finish
Code: RR0031
Size: P 1/2 (8)



Black 'Galatic' Ring
Opaque Matt Finish
Code: RR0037
Size: R 1/2 (9)



Black 'Gum Drop' Earring
Opaque Polished Finish
Code: RE0033
Size: 4.5cm (incl Hook)



Black 'Drum' Earring
Opaque Matt Finish
Code: RE0041
Size: 4.6cm (incl. clasp)



Black 'Rothko'
Opaque Matt Finish
Code: RE0021
Size: 6cm (incl. hook)



Black 'Oeuf' Earring
Opaque Matt Finish
Code: RE0024
Size: 6cm (incl. hook)



Black 'Leaf' Earring
Opaque Matt Finish
Code: RE0037
Size: 6cm (incl. clasp)



White 'Pebble' (Short)
Opaque Polished Finished
Code: RN0019
Length: 56cm on wire



White 'Pebble- Gum Nut'
Opaque Polished Finish
Code: RN0064
Length: 86cm on Satin Cord



White 'Elliptic'- (Short)
Transparent Matt Finish
Code: RN0130
Length: 65cm on Satin Cord



Black 'Elliptic'- (Long)
Transparent Matt Finish
Code: RN0121
Length: 88cm on Satin Cord



Artic White 'Ellypsis' Bangle
Opaque Matt Finish
Code: RB0097
Diameter: 6.5cm H: cm



Artic White 'Miro' Bangle
Opaque Matt Finish
Code: RB0113
Diameter: 6.8cm H: 1.5cm



White 'Oceanic' Bangle
Opaque Semi Polish
Code: RB0068
Diameter: 6.5 cm H: 1cm



White 'River Rock' Bracelet
Opaque Polished Finish
Code: RB0120
Adjustable on clear elastic



White 'Luna' Ring
Opaque Matt Finish
Code: RR0027
Size: R 1/2 (9)



White 'Sphere' Ring
Opaque Matt Finish
Code: RR0032
Size: P 1/2 (8)



White 'Galatic' Ring
Opaque Matt Finish
Code: RR0039
Size: R 1/2 (9)



White 'Gum Drop' Earring
Opaque Polished Finish
Code: RE0034
Size: 4.5cm (incl. hook)



White 'Leaf'
Opaque Matt
RE0038
Size: 6cm (incl. hook)



White 'Drum'
Opaque Matt
RE0042
S ize: 4.5cm incl hook



Elliptic Necklace-long & Short, Leaf Earrings



Lime 'Lolly Shoppe'
Mixed Matt and Polished
Code: RN0109
Length: 99cm



Multi 'Lolly Shoppe'
Mixed Matt and Polished
Code: RN070
Length: 99cm



PurpleTurquoise Lolly Shoppe
CODE: RN0221
Length: 99cm



Turquoise 'Ellypsis'
Transparent Matt Finish
Code: RB0037
Diameter: 6.5cm H:2-3.5cm



Aqua 'Ellypsis'
Transparent Matt Finish
Code: RB0106
Diameter: 6.5cm H:2-3.5cm



Lime 'Ellypsis'
Code: RB0038
Transparent Matt Finish
Diameter: 6.5cm H:2-3.5cm



Marine 'Oceanic'
Transparent Semi Polish
Code: RB0043
Diameter: 6.5cm Height: 1cm



Lime 'Oceanic' Bangle
Transparent Semi Polish
Code: RB0069
Diameter: 6.5cm Height: 1cm



Aqua 'Oceanic'
Opaque Semi Polish
Code: RB0101
Diameter: 6.5cm Height: 1cm



Aqua 'Oceanic' Bangle
Transparent Semi Polish
Code: RB0044
Diameter: 6.5cm H: 1cm



Code: RB00146
Transparent Semi Polish
Diameter: 6.5cm H: 1.5cm



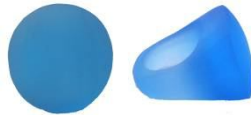
Lime 'River Rock' Bracelet
Opaque Polish Finish
Code: RB0122
Adjustable on clear elastic



Turquoise 'Luna' Ring
Transparent Matt Finish
Code: RR0004
Size: R 1/2 (9)



Lime 'Luna' Ring
Transparent- Matt Finish
Code: RR0003
Size: R 1/2 (9)



Aqua 'Galatic' Ring
Transparent Matt Finish
Code: RR0042
Size: R 1/2 (9)



Lime 'Galatic' Ring
Transparent Matt Finish
Code: RR0043
Size: R 1/2 (9)



Lolly Shoppe Necklace, Wrap Bangle, Rock Ring



Contemporary jewellery design

Director: Alexandra Freeman

E: sales@polkaluka.com.au

P: 02 9423 6984

F: 02 8079 0707

For full product range, please go to:
www.polkaluka.com.au