

The logo consists of three red circles of varying sizes arranged in a cluster, with the largest circle at the bottom left and two smaller ones above it to the right.

Polka Luka



Hinterland Collection
2011-12



'Hinterland' 2011-12: Our new Hinterland range 2011-12 is inspired by the natural beauty and colours of the hinterland and coastal areas of Australia. In addition to our popular brights, the Hinterland range features a muted range of rich greens, chocolates, aqua-marines, ochres, in forms that are smooth and organic. In addition to our ever popular brights, the Hinterland range also draws on a muted, organic palate of soft deep greens, ochre, and chocolate. In this softer focus, 'Hinterland' also reflects the spaces we can create in our own lives where we can retreat and be renewed and refreshed

About Polka Luka: Polka Luka is a Australian design label creating contemporary handcrafted resin pieces, focusing on clean lines, organic form, and vibrant colour. Working with the luminous material of resin, each piece in our range is both entirely hand-crafted, and part of a cohesive, complementary range- resulting in limited edition, innovative, yet eminently easy to wear pieces.

The Designer: Polka Luka designer, Alexandra Freeman, has a background in fine arts, art history, and language studies. Over eight years of travel, residence, and conservation work across China and South East Asia created a rich patchwork of experiences and learning that led to the creation of Polka Luka in 2007. A love of colour, simplicity of form, and especially mid 20th Century design are principle design tenets central to the creation of each range. Alexandra's travels across South East and East Asia have also illustrated the necessity of creating equitable and sustainable trade in improving people's livelihoods and the ability of small businesses to positively effect change in peoples lives.

Design and Production : Polka Luka emphasizes small scale, environmentally and socially responsible production processes. All products are designed by Alexandra at her workshop in South Coast NSW. Products are then collaboratively produced within two workshops in Bali. Small scale production in these workshops allows us to closely monitor and improve working conditions, creating an equitable work environment. This collaborative, boutique approach has let us see the benefits employment have brought to the individuals, (and their families and communities) we work with. We are proud of the relationships we have developed.

All Polka Luka jewellery items are entirely handmade- from initial master prototypes made via clay and plasticine; to colours hand mixed; to the moulds being hand cast; and finally each piece being sanded and finished by hand. This results in limited edition pieces to treasure. We prefer our products to have a natural patina, and all products in this catalogue feature a matt finish, unless otherwise stated. To bring out the luminosity of colour in resin, we also prefer, with the exception of black and white, to use transparent colours, and all items in this catalogue are translucent (rather than opaque) unless otherwise stated.

As a result of Polka Luka's emphasis on socially responsible, small scale production, and individual handmade design, you know you will be wearing an ethically crafted, limited edition piece.

Alexandra and the Polka Luka Team

E: sales@polkaluka.com.au P: 02 9423 6984 F: 02 8079 0707 Moruya, NSW www.polkaluka.com.au





Polka Luka



ringtime necklace, 'Reverie' ring, 'Springtime' Earrings, Mix
Hinterland Range Bangles



'Reverie' necklace, 'Hidden Grove' ring, 'Reverie' Earrings, Mix
Hinterland Range Bangles



'Night Flight' Pendant, 'Reverie' ring, 'Springtime' Earrings, Mix
Hinterland Range Bangles



"Blossom"- Trans Red
Length: 53cm on wire
RN0239



"Blossom"- Trans Orange
Length: 53cm on wire
RN0244



"In Bloom"- Trans Red
Length: 50cm on suede
RN0247



"In Bloom"- Trans Orange
Length: 50cm on suede
RN0252



"Springtime"- Trans Red
Length: 81cm on Satin Cord
RN0232



"Springtime"- Trans Orange
Length: 81cm on Satin Cord
RN0237



"Hidden Grove"- Trans Red
Length: 57cm on suede
RN0274



"Hidden Grove"- Orange
Length: 57cm on suede
RN0279



"Reverie"- Trans Red
Length: 59cm on satin cord
RN0254



"Reverie"- Trans Orange
Length: 59cm on satin cord
RN0259



"Reverie" Tortoiseshell
Length: 59cm on satin cord
RN0261



"Into the Waves"- Trans Red
Length: 48cm on suede
RN0262



"Into the Waves" Tortoiseshell
Length: 48cm on suede
RN0268



"Wandering"- Trans Red
Length: 78cm on satin cord
RN0269



"Wandering"- Trans Orange
Length: 78cm on satin cord
RN0287



"Remnant"- Trans Red
Length: 58cm on satin cord
RN0281



"Fly Away"- Trans Red
Length: 84cm on satin cord
RN0284



"Night Flight"- Pendant- Red
Length: 51cm (with pendant)
RP0037



"Sprout" Pendant- Chocolate
Stainless Steel leaf
Length: 51cm (with pendant)
RP0033



"Rivulet"- Red Mix
Diameter:6.8cm Height:1cm
RB0273



"Infinity"- Trans Red
Diameter:6.8cm Height:1cm
RB0252



"Twig"- Trans Red
Diameter:6.9cm Height:1cm
RB0260



"Twig"- Trans Chocolat
Diameter:6.9cm Height:1cm
RB0267



"Fronde"- Trans Red
Diameter:7cm Height:2.6cm
RB0268



"Hinterland"- Red Mix
Diameter:6.7cm Height:2cm
RB0223



"Hinterland"- Orange Mix
Diameter:6.7cm Height:2cm
RB0228



"Hinterland"- Chocolate
Diameter:6.7cm Height:2cm
RB0230



"Hinterland"- Tortoiseshell
Diameter:6.7cm Height:2cm
RB0231



"Wandering"- Trans Red
Diameter:6.8cm Height:3.5cm
RB0234



"Wandering"- Orange Mix
Diameter:6.8cm Height:3.5cm
RB0239



"Wandering"- Chocolate
Diameter:6.8cm Height:3.5cm
RB0241



"Wandering" Tortoiseshell
Diameter:6.8cm Height:3.5cm
RB0242



'Into the Waves' Necklace, 'Reverie' Earrings, 'Hinterland' and
'Wandering' Bangles



"Escape"- Trans Orange
Diameter:6.7cm Height:2.5cm
RB0249



"Escape"- Trans Red
Diameter:6.7cm H:2.5cm
RB0244



"Escape"- Chocolate
Diameter:6.7cm H:2.5cm
RB0251



"Into the Waves"- Red
Adjustable on stretch cord
RB0281



"Into the Waves" Orange
Adjustable on stretch cord
RB0286



"Wattle Bud"- Trans Red
Adjustable on stretch cord
RB0288



"Hidden Grove"- Trans Red
Adjustable on stretch cord
RB0294



"Remnant"- Trans Red
Adjustable on stretch cord
RB0301



"Wandering"- Trans Red
Height: 1cm Size: 9 (R1/2)
RR0101



"Wandering"- Orange
Height: 1cm Size: 9 (R1/2)
RR0106



"Dunes"- Trans Red
Height: 2.6cm Size: 9 (R1/2)
RR0092



"Dunes"- Trans Chocolate
Height: 2.6cm Size: 9 (R1/2)
RR0099



"Dunes"- Trans Orange
Height: 2.6cm Size: 9 (R1/2)
RR0097



"Hidden Grove"- Red Mix
Height: 1.5cm Size: 9 (R1/2)
RR0108



'Blossum' Necklace, 'Reverie' Ring, 'Springtime' Earrings,
'Hinterland', 'Wandering', and 'Infinity' Bangles



"Hidden Grove" Orange Mix
Height: 1.5cm Size: 9 (R1/2)
RR0120



"Hidden Grove"- Tortoiseshell
Height: 1.5cm Size: 9 (R1/2)
RR0114



"Reverie"- Opaque Red
Height: 3.5cm Adjustable
Backed on Stainless Steel
RR0115



"Springtime"- Trans Red
Length: 6.5cm (inc. clasp)
RE0119



"Springtime"- Trans Orange
Length: 6.5cm (inc. clasp)
RE0124



"Reverie " Red
Length: 4.5cm (inc. clasp)
RE0126



"Reverie"- Trans Orange
Length: 4.5cm (inc. clasp)
RE0131



"Reverie"- Tortoiseshell
Length: 4.5cm (inc. clasp)
RE0133



"Cairn"- Trans Red
Length: 4.5cm (inc. clasp)
RE0114



"Wandering" necklace, "Wandering" and "Hinterland" Bangles
'Dune' ring.



"Cairn"- Chocolate
Length: 4.5cm (inc. clasp)
RE0118



"Hidden Grove"- Trans Red
Length: 3.5cm (inc. clasp)
RE0134



"Hidden Grove"- Orange
Length: 3.5cm (inc. clasp)
RE0139



"Blossom"- Black
Length: 53cm on wire
RN0240



"In Bloom"- Black
Length: 50cm on suede
RN0248



"Springtime"- Black
Length: 81cm on Satin Cord
RN0233



"Hidden Grove"- Black
Length: 57cm on suede
RN0275



"Reverie"- Black
Length: 59cm on satin cord
RN0255



"Into the Waves"- Black
Length: 48cm on suede
RN0263



"Wandering"- Black
Length: 78cm on satin cord
RB0270



"Remnant"- Black
Length: 58cm on satin cord
RN0282



"Fly Away"- Black
Length: 84cm on satin cord
RN0285



"Leaf " Pendant- Black
Length: 89cm (with pendant)
Resin & Stainless Steel
RP0034



"Night Flight"- Black
Length: 51cm (with pendant)
RP0038



"Seafarer" Pendant- Black
Length: 51cm (with pendant)
RP0040



"Rivulet"- Black Mix
Diameter:6.8cm Height:1cm
RB0274



"Infinity"- Black
Diameter:6.8cm Height:1cm
RB0253



"Twig"- Black
Diameter:6.9cm Height:1cm
RB0261



"FronD"- Black
Diameter:7cm Height:2.6cm
RB0269



"Escape"- Black
Diameter:6.7cm Height:2.5cm
RB0245



"Hinterland"- Black
Diameter:6.7cm Height: 2cm
RB0224



"Wandering"- Black
Diameter:6.8cm H:3.5cm
RB0235



"Wattle Bud"- Black
Adjustable on stretch cord
Resin, Recycled Aluminium
RB0289



"Fly Away" Bracelet- Black
Adjustable on stretch cord
Stainless Bird
RB0292



"Into the Waves"- Black
Adjustable on stretch cord
Resin, Recycled Aluminium
RB0282



"Remnant" Bracelet- Black
Adjustable on stretch cord
RB0302



"Hidden Grove"- Black
Adjustable on stretch cord
Resin & Recycled aluminium
RB0295



"Wandering"- Black
Height: 1cm Size: 9 (R1/2)
RR0102



"Dunes"- Black
Height: 2.6cm Size: 9 (R1/2)
RR0093



"Hidden Grove"- Black
Height: 1.5cm Size: 9 (R1/2)
RR0109



"Reverie"- Black
Height: 3.5cm Adjustable
Backed on Stainless Steel
RR0116



"Springtime"- Black
Length: 6.5cm (inc. clasp)
RE0120



"Reverie"- Black
Length: 4.5cm (inc. clasp)
RE0127



Cairn Earrings- Black
Length: 4.5cm (inc. clasp)
RE0115



"Hidden Grove"- Black
Length: 3.5cm (inc. clasp)
RE0135



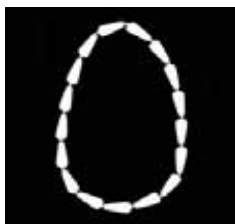
"Fly Away" Necklace, "Wandering", "Hinterland", and "Infinity"
Bangles, "Dune" Ring and "Spring time" Earrings.



"Blossom"- White
Length: 53cm on wire
RN0241



"In Bloom"- White
Length: 50cm on suede
RN0249



"Springtime"- White
Length: 81cm on Satin Cord
RN0234



"Hidden Grove"- White
Length: 57cm on suede
RN0276



"Reverie"- White
Length: 59cm on satin cord
RN0256



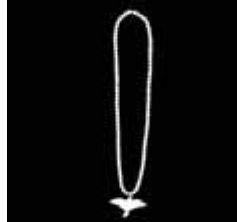
"Into the Waves"- White
Length: 48cm on suede
RN0264



"Wandering"- White
Length: 78cm on satin cord
RN0271



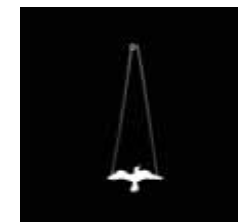
"Remnant"- White
Length: 58cm on satin cord
RN0283



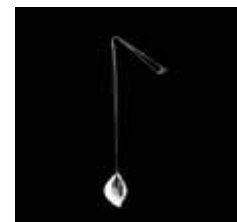
"Fly Away"- White
Length: 84cm on satin cord
RN0286



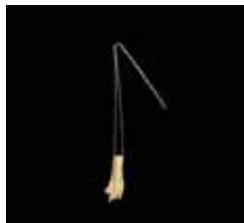
"Night Flight" White
Length: 51cm (with pendant)
RP0039



"Seafarer"- White
Length: 51cm (with pendant)
RP0041



"Leaf" Pendant- White
Length: 89cm (with pendant)
Resin & Stainless Steel
RP0035



"Into the Forest"- Cream
Length: 89cm (incl. pendant)
RP0032



"Rivulet"- White Mix
Diameter:6.8cm Height:1cm
RB0275



"Infinity"- White
Diameter:6.8cm Height:1cm
RB0254



"Twig"-White
Diameter:6.9cm Height:1cm
RB0262



"Fronde"- White
Diameter:7cm Height:2.6cm
RB0270



"Escape"- White
Diameter:6.7cm H:2.5cm
RB0246



"Hinterland"- White Mix
Diameter:6.7cm Height: 2cm
RB0225



"Hinterland"- Cream
Diameter:6.7cm Height: 2cm
RB0232



"Hinterland"-Sand
Diameter:6.7cm Height: 2cm
RB0233



"Wandering"- White Mix
Diameter:6.8cm H:3.5cm
RB0236



"Wandering"- Cream
Diameter:6.8cm H:3.5cm
RB0243



"Into the Waves"- White
Adjustable on stretch cord
Resin, Recycled Aluminium
RB0283



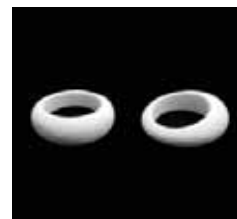
"Wattle Bud"- White
Adjustable on stretch cord
Resin, Recycled Aluminium
RB0290



"Hidden Grove"- White
Adjustable on stretch cord
Resin & Recycled aluminium
RB0296



"Remnant" Bracelet- White
Adjustable on stretch cord
RB0303



"Wandering"- White
Height: 1cm Size: 9 (R1/2)
RR0103



"Dunes"- Cream
Height: 2.6cm Size: 9 (R1/2)
RR0100



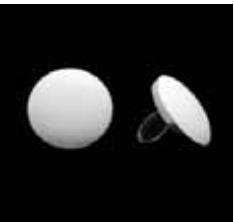
"Dunes"- White
Height: 2.6cm Size: 9 (R1/2)
RR0094



"Hidden Grove"- White Mix
Height: 1.5cm Size: 9 (R1/2)
RR0110



"Hidden Grove"- White Solid
Height: 1.5cm Size: 9 (R1/2)
RR0111



"Reverie"- White
Height: 3.5cm Adjustable
Backed on Stainless Steel
RR0117



"Springtime"- White
Length: 6.5cm (inc. clasp)
RE0121



"Cairn" - White
Length: 4.5cm (inc. clasp)
RE0116



"Hidden Grove"- White
Length: 3.5cm (inc. clasp)
RE0136



'Blossum' Necklace, 'Springtime' earrings, 'Hinterland', 'Twig', 'Rivulet', and 'Infinity' bangles.



"Blossom"- Trans Lime
Length: 53cm on wire
RN0242



"Blossom"- Trans Olive
Length: 53cm on wire
RN0243



"Blossom"- Turquoise
Length: 53cm on wire
RN0245



"Blossom"- Trans Aqua
Length: 53cm on wire
RN0246



"In Bloom"- Trans Lime
Length: 50cm on suede
RN0250



"In Bloom"- Trans Olive
Length: 50cm on suede
RN0251



"In Bloom"- Trans Turquoise
Length: 50cm on suede
RN0253



"Springtime"- Trans Lime
Length: 81cm on Satin Cord
RN0235



"Springtime"- Trans Olive
Length: 81cm on Satin Cord
RN0236



"Springtime"- Turquoise
Length: 81cm on Satin Cord
RN0238



"Hidden Grove"- Trans Lime
Length: 57cm on suede
RN0277



"Hidden Grove"- Trans Olive
Length: 57cm on suede
RN0278



"Hidden Grove"- Turquoise
Length: 57cm on suede
RN0280



"Reverie"- Trans Lime
Length: 59cm on satin cord
RN0257



'Reverie' Necklace and Rings, 'Wandering'
Ring & Mix Hinterland range bangles



"Reverie"-Trans Olive
Length: 59cm on satin cord
RN0258



"Reverie"- Turquoise
Length: 59cm on satin cord
RN0260



"Into the Waves"- Trans Lime
Length: 48cm on suede
RN0265



"Into the Waves"-Trans Olive
Length: 48cm on suede
RN0266



"Into the Waves"- Turquoise
Length: 48cm on suede
RN0267



"Wandering"- Trans Lime
Length: 78cm on satin cord
RN0272



Leaf Pendant- Olive
Length: 89cm (with pendant)
Resin & Stainless Steel
RP0036



"Rivulet"- Lime Mix
Diameter:6.8cm Height:1cm
RB0276



"Rivulet"- Olive Mix
Diameter:6.8cm Height:1cm
RB0277



"Rivulet"- Aqua Mix
Diameter:6.8cm Height:1cm
RB0280



"Rivulet"- Turquoise Mix
Diameter:6.8cm Height:1cm
RB0278



"Rivulet"- Azure Mix
Diameter:6.8cm Height:1cm
RB0279



"Infinity"- Trans Lime
Diameter:6.8cm Height:1cm
RB0255



"Infinity"- Trans Olive
Diameter:6.8cm Height:1cm
RB0256



'In Bloom' Necklace, 'Springtime' earrings,
'Hinterland', 'Twig', 'Rivulet', and 'Infinity' bangles.



"Infinity"- Trans Aqua
Diameter:6.8cm Height:1cm
RB0259



"Infinity"- Turquoise
Diameter:6.8cm Height:1cm
RB0257



"Infinity"- Trans Azure
Diameter:6.8cm Height:1cm
RB0258



"Twig"- Trans Lime
Diameter:6.9cm Height:1cm
RB0263



"Twig"- Trans Olive
Diameter:6.9cm Height:1cm
RB0264



"Twig"- Trans Aqua
Diameter:6.9cm Height:1cm
RB0266



"Twig"- Trans Turquoise
Diameter:6.9cm Height:1cm
RB0265



"Escape"- Trans Lime
Diameter:6.7cm H:2.5cm
RB0247



"Escape"- Trans Olive
Diameter:6.7cm H:2.5cm
RB0248



"Escape"- Trans Turquoise
Diameter:6.7cm H:2.5cm
RB0250



"Fronde"- Trans Lime
Diameter:7cm Height:2.6cm
RB0271



"Fronde"- Trans Olive
Diameter:7cm Height:2.6cm
RB0272



"Wandering"- Trans Lime
Diameter:6.8cm Height:3.5cm
RB0237



"Wandering"- Olive Mix
Diameter:6.8cm Height:3.5cm
RB0238



'Leaf' Pendant, 'Dunes' Ring, 'Hinterland',
'Twig', and 'Wandering' Bangles



"Wandering"- Turquoise Mix
Diameter:6.8cm Height:3.5cm
RB0240



"Hinterland"- Trans Lime
Diameter:6.7cm Height: 2cm
RB0226



"Hinterland"- Olive Mix
Diameter:6.7cm Height: 2cm
RB0227



"Hinterland"-Turquoise Mix
Diameter:6.7cm Height: 2cm
RB0229



"Into the Waves"- Lime
Adjustable on stretch cord
Resin, Recycled Aluminium
RB0284



"Into the Waves"- Olive
Adjustable on stretch cord
Resin, Recycled Aluminium
RB0285



"Into the Waves"-Turquoise
Adjustable on stretch cord
Resin, Recycled Aluminium
RB0287



"Hidden Grove"- Trans Lime
Adjustable on stretch cord
Resin & Recycled aluminium
RB0297



"Wandering"- Trans Lime
Height: 1cm Size: 9 (R1/2)
RR0104



"Wandering"- Trans Olive
Height: 1cm Size: 9 (R1/2)
RR0105



"Wandering"- Turquoise
Height: 1cm Size: 9 (R1/2)
RR0107



"Dunes"- Trans Lime
Height: 2.6cm Size: 9 (R1/2)
RR0095



"Dunes"- Trans Olive
Height: 2.6cm Size: 9 (R1/2)
RR0096



"Dunes"- Turquoise
Height: 2.6cm Size: 9 (R1/2)
RR0098



"Hidden Grove" Necklace, "Hidden Grove" Earrings, "Dune" Ring, "Into the Waves" Bracelet, and Hinterland Range Bangles



"Hidden Grove"-Turquoise Mix
Height: 1.5cm Size: 9 (R1/2)
RR0113



"Hidden Grove"- Green Mix
Height: 1.5cm Size: 9 (R1/2)
RR0112



"Reverie"- Aqua Mix
Height: 3.5cm Adjustable
Backed on Stainless Steel
RR0119



"Reverie"- Turquoise
Height: 3.5cm Adjustable
Backed on Stainless Steel
RR0118



"Springtime"- Trans Lime
Length: 6.5cm (inc. clasp)
RE0122



"Springtime"- Trans Olive
Length: 6.5cm (inc. clasp)
RE0123



"Springtime"- Turquoise
Length: 6.5cm (inc. clasp)
RE0125



"Reverie"-Trans Lime
Length: 4.5cm (inc. clasp)
RE0129



"Reverie"Trans Olive
Length: 4.5cm (inc. clasp)
RE0130



"Reverie"-Turquoise
Length: 4.5cm (inc. clasp)
RE0132



"Cairn"- Trans Turquoise
Length: 4.5cm (inc. clasp)
RE0117



"Hidden Grove"- Trans Lime
Length: 3.5cm (inc. clasp)
RE0137



"Hidden Grove"- Trans Olive
Length: 3.5cm (inc. clasp)
RE0138



"Hidden Grove"- Turquoise
Length: 3.5cm (inc. clasp)
RE0140



Springtime' necklace, 'Infinity', 'Rivulet' and 'Hinterland' range bangles
'Reverie' Ring.



"Abstract" -Transparent red
Length: 58cm on satin cord
RN0188



"Lunette" - Transparent red
Length: 62.5cm on wire
RN0194



"Bertoia"-long-Trans red
Length: 86cm on satin cord
RB0222



"Jacobsen"-Transparent red
Length: 88cm on satin cord
RN0182



"Lolly Shoppe" -Red theme
Length: 99cm on satin cord
RN0071



"Dove" Short-Opaque Red
Semi-Polish Finish
Length: 57cm on satin cord
RN0205



"Miro" -Long- Opaque Red
Polished finish
Length: 87cm on Satin Cord
RN0114



"Pollock"- Red Mix
Diameter: 6.5 cm H: 1.2cm
RB0163



"Pollock"-Orange Mix
Diameter: 6.5 cm H: 1.2cm
RB0165



"Oceanic" - Transparent red
Diameter: 6.5cm Height: 1cm
RB0040



"Oceanic" - Trans Honey
Diameter: 6.5cm Height: 1cm
RB0145



"Oceanic" - Opaque Red
Diameter: 6.5cm Height: 1cm
RB0100



Ellypsis - Transparent red
Diameter: 6.5cm H: 2-3.5cm
RB0035



Ellypsis -Trans Orange
Diameter: 6.5cm H: 2-3.5cm
RB0105



"Eero"- Red & White
Diameter: 6.7cm Height: 4cm
RB0151



"Eero"- Orange & White
Diameter: 6.7cm Height: 4cm
RB0152



"Wrap"- Transparent Red
Diameter: Open Height: 5cm
RB0196



"Wrap" Trans Orange
Diameter: Open Height: 5cm
RB0198



"River "Rock" Opaque Red
Opaque Polished Finish
Adjustable on clear elastic
RB0118



"Abstract" Bracelet- Red
Flexible on stretch elastic
RB0201



"Rock" Ring- Orange Mix
Size: 8.5 (R)
RR0064



"Rock" Ring- Red Mix
Size: 8.5 (R)
RR0061



"Luna" Ring- Trans Red
Size: R 1/2 (9)
RR0002

"Luna" Ring- Trans Orange
Size: R 1/2 (9)
RR0005



"Lunette" Earring-Trans Red
Length: 3.3cm (incl hook)
RE0099



"Lunette" Earring- Orange
Length: 3.3cm (incl hook)
RE0103



"Dew Drop"- Red & Orange
Length: 5cm (incl hook)
RE0065



"Dome" Earring- Trans Red
Length: 5cm (incl hook)
RE0072



"Abstract" Earring-Trans Red
Length: 4.5cm (incl hook)
RE0090



"Leaf" Earring- Trans Red
Size: 6cm (incl. clasp)
RE0036



"Gum Drop" Earring- Red
Opaque Polished Finish
Size: 4.5cm (incl Hook)
RE0032



"Modernist"- Trans Red
Transparent Matt Finish
Size: 4.8cm (incl. hook)
RE0001



Jacobsen necklace, 'Pollock' and 'Bertoia' Bangles



"Lunette" Necklace - Black
Length: 62.5cm on wire
RN0195



"Bertoia" - Necklace-Black
Length: 86cm on Satin Cord
RN0223



"Jacobsen" Necklace- Black
Length: 88cm on satin cord
RN0183



"Elliptic" Necklace - Black
Length: 88cm on Satin Cord
RN0120



"Lolly Shoppe"- Black Mix
Length: 99cm
RN0161



"Dove"- Black (Semi Polish)
Length: 56.5cm on satin cord
RN0206



"Miro"- long- Black (Polish)
Length: 87cm on Satin Cord
RN0115



"Pollock" Bangle- Black Mix
Diameter: 6.5 cm H: 1.2cm
RB0162



"Ellypsis " Bangle- Black
Diameter: 6.5cm H:2-4cm
RB0036



"Eero" Bangle- Black-White
Diameter: 6.7cm Height: 4cm
RB0150



"Wrap" Bangle - Black
Diameter: Open Height: 5cm
RB0195



"River "Rock"Black (Polish)
Adjustable on clear elastic
RB0119



"Rock" Ring- Black Mix
Size: R-R1/2 (8.75-9)
RR0062



"Rock" Ring- Solid Black
Size: 8.5 (R)
RR0091



"Luna" Ring- Black
Size: R 1/2 (9)
RR0001



"Sphere" Ring- Black
Size: P 1/2 (8)
RR0031



"Lunette" Earring- Black
Length: 3.3cm (incl hook)
RE0100



"Dome" Earrings- Black
Length: 5cm (incl hook)
RE0073



"Dew Drop"- Black & White
Length: 5cm (incl hook)
RE0066



"Leaf" Earring- Black
Size: 6cm (incl. clasp)
RE0037



"Oeuf" Earring- Black
Size: 6cm (incl. hook)
RE0024



"Gum Drop" Earring- Black
Size: 4.5cm (incl Hook)
RE0033



"Dove" Sht - White
Semi- Polished Finisheds
Length: 57cm on satin cord
RN0207



"Jacobsen" Necklace - White
Length: 88cm on satin cord
RN0184



"Miro" (Long)- White
Opaque Polished Finish
Length: 87cm on Satin Cord
RN0116



Hoop- "Pollock"- White Mix
Diameter: 6.5 cm H: 1.2cm
RB0164



"Ellypsis" Bangle- White
Diameter: 6.5cm H: cm
RB0097



"Rock" Ring- White Mix
Size: R (8.75-9)
RR0063



"Dove" necklace, "Rock" ring
(see www.polkaluka.com.au for more 'Favourite' model & product shots.



"Luna" Ring- White
Size: R 1/2 (9)
RR0027



"Lunette" Earring- White
Length: 3.3cm (incl hook)
RE0101



"Leaf" Earring- White
Size: 6cm (incl. hook)
RE0038



"Gum Drop" Earring- White
Opaque Polished Finish
Size: 4.5cm (incl. hook)
RE0034



"Jacobsen" -Trans Lime
Length: 88cm on satin cord
RN0186



"Jacobsen" - Turquoise
Length: 88cm on satin cord
RN0187



"Lolly Shoppe"- Multi-Colour
Length: 99cm
RN070



"Lolly Shoppe"- Lime
Length: 99cm
RN0109



Lolly Shoppe- "Purple Turquoise"
Length: 99cm
RN0221



"Oceanic" Bangle- Lime
Diameter: 6.5cm Height: 1cm
RB0069



"Oceanic" Bangle- Olive
Diameter: 6.5cm H: 1.5cm
RB0146



"Oceanic" Bangle-Aqua
Diameter: 6.5cm H: 1cm
RB0044



"Oceanic" - Turquoise
Diameter: 6.5cm Height: 1cm
RB0043



"Pollock"-Trans Lime
Diameter: 6.5 cm H: 1.2cm
RB0166



"Pollock"- Trans Aqua
Diameter: 6.5 cm H: 1.2cm
RB0219



"Pollock"-Turquoise
Diameter: 6.5 cm H: 1.2cm
RB0167



"Ellypsis" Bangle- Trans Lime
Diameter: 6.5cm H:2-3.5cm
RB0038



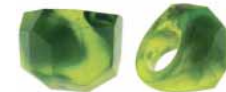
"Ellypsis" Bangle- Turquoise
Diameter: 6.5cm H:2-3.5cm
RB0037



"Ellypsis" Bangle- Aqua
Diameter: 6.5cm H:2-3.5cm
RB0106



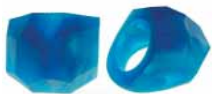
"River "Rock" Bracelet-Lime
Opaque Polish Finish
Adjustable on clear elastic
RB0122



"Rock" Ring- Green Mix
Size: R-R1/2 (8.75-9)
RR0065



"Rock" Ring- Aqua Mix
Size: R-R1/2 (8.75-9)
RR0067



"Rock" Ring- Turquoise Mix
Size: R-R1/2 (8.75-9)
RR0066



"Luna" Ring- Trans Lime
Size: R 1/2 (9)
RR0003



"Luna" Ring-Trans Turquoise
Size: R 1/2 (9)
RR0004



"Lunette" Earring-Trans Lime
Length: 3.3cm (incl hook)
RE0104



"Lunette" Earring- Turquoise
Length: 3.3cm (incl hook)
RE0105



"Dew Drop" Ergs-Turquoise
Length: 5cm incl. hook
RE0067



"Luna" Bowl- Sml- Green Mix
D: 11.5cm H: 4.5cm
BW0008



"Luna" Bowl- Sml Red Mix
D: 11.5cm H: 4.5cm
BW0006



"Luna" Bowl- Sml Red Mix
D: 11.5cm H: 4.5cm
BW0004



"Luna" Bowl- Sml- White Mix
D: 11.5cm H: 4.5cm
BW0007



"Luna" Bowl- Ig- Green Mix
D: 16cm H:6.5cm
BW0013



"Luna" Bowl- Ig- Trans Mix
D: 16cm H:6.5cm
BW0011



"Luna" Bowl- Ig- Red Mix
D: 16cm H:6.5cm
BW0009



"Luna" Bowl- Ig- Green Mix
D: 16cm H:6.5cm
BW0013



Contemporary jewellery design

E: sales@polkaluka.com.au

P: 02 9423 6984

F: 02 8079 0707

Full product range:

www.polkaluka.com.au